

# Summers Place Auctions Ltd



GARDEN & NATURAL  
HISTORY

28 & 29th March 2023

**Sp**  
**SUMMERS PLACE**  
**AUCTIONS**

**Live Auction (Lots 1-74)**  
**Tuesday 28 March 2023**  
**at 13.00 BST**

**Sealed Bid Auction (Lots 100-496)**  
**Bids must be with us by 16.00 BST**  
**Wed 29th March 2023**

**Viewing By appointment only**



**Bid online at Summers Place Live**  
**No surcharge (*normal BP & VAT apply*)**  
**Register through our website**

**Bid online at our auctions through**  
**the-saleroom.com**

**Please note there is a 5% surcharge for using  
the sale-room bidding facility**

**SPECIALISTS AND AUCTION ENQUIRIES**

**Rupert van der Werff**

**Specialist**

+44(0)1403 331 333

rupert.werff@summersplaceauctions.com

**James Rylands**

**Garden Statuary Specialist**

+44(0)1403 331 334

james.rylands@summersplaceauctions.com

**Errol Fuller**

**Curator for Natural History**

**Administrator/Accounts/Shipping**

**Kate Diment**

+44(0)1403 331 335

kate.diment@summersplaceauctions.com

**Office**

+44 (0) 1403 331331

**Visit our website for additional  
images and videos of many of the  
Lots**

**www.summersplaceauctions.com**

1

**A rare carved limestone  
cylindrical pedestal**

16th/17th century  
Southern French/Northern Italian  
carved in relief with papal  
armorials  
(top moulding missing)  
150cm high by 82cm diameter

£3,000-5,000



For details of our buyers premium which is added onto the hammer price together with any other applicable charges please refer to our guide for prospective buyers





2

**A rare and unusually small Istrian type stone wellhead**

Veneto province, 16/17th century  
with later wrought iron overthrow  
the well head 60cm high  
by 80cm wide  
220cm high overall

£3,000-5,000

Online bidding via SummersPlace Live - register through [www.summersplaceauctions.com](http://www.summersplaceauctions.com)  
No surcharge (*normal BP and VAT apply*)





3

**A rare Georgian carved  
stone sundial**

late 18th century  
with 14 inch bronze plate  
signed Thomas Benbow  
Northwood and engraved  
with a map of the  
world and longitudinal  
measurements  
117cm high

Thomas Benbow is  
recorded as a clockmaker  
working in Newport Salop  
between 1778 and c1800

£2,500-4,000



For details of our buyers premium which is added onto the hammer price together with any other applicable charges please refer to our guide for prospective buyers

4

**A Bronze putto**

18th century or earlier on stone base

68cm high

£2,000-3,000



Online bidding via SummersPlace Live - register through [www.summersplaceauctions.com](http://www.summersplaceauctions.com)  
No surcharge (*normal BP and VAT apply*)



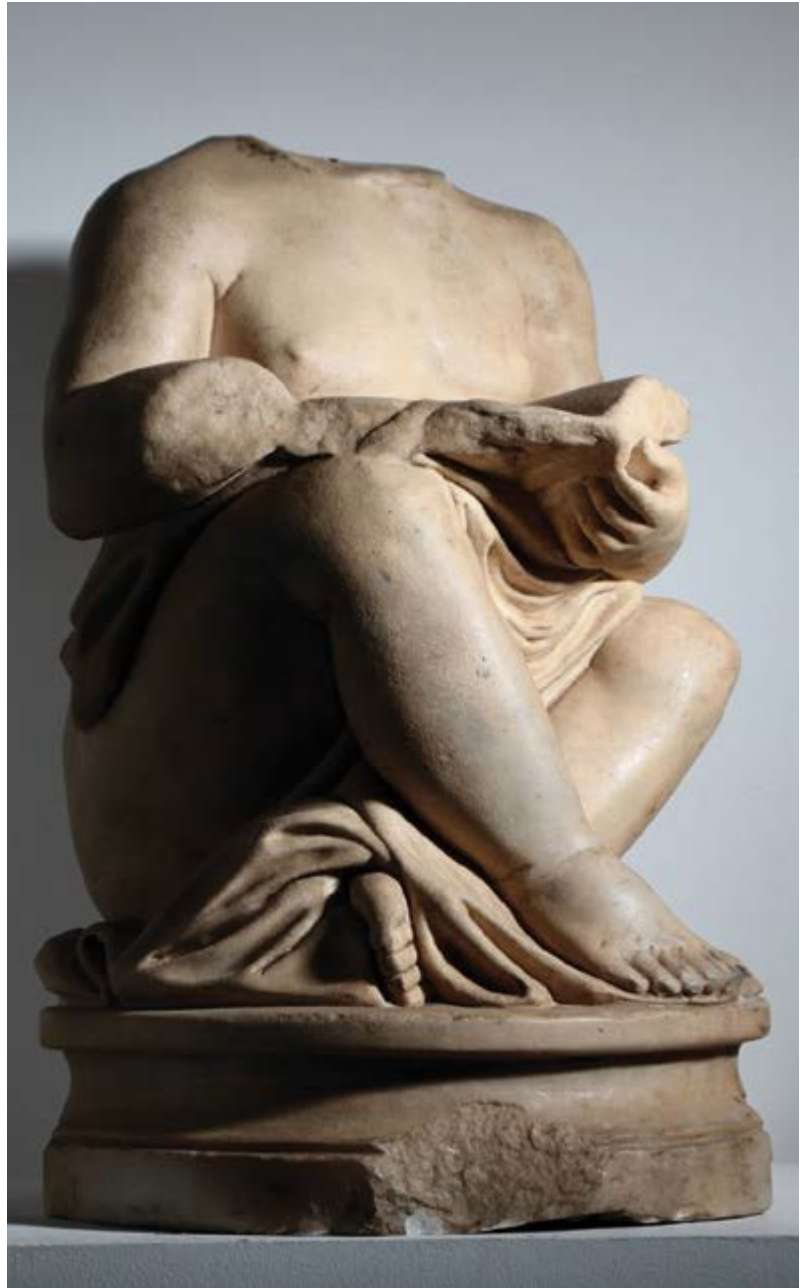
5

**A carved white marble  
putto**

Italian, late 17th/early 18th  
century

with indistinct signature  
possibly Guiseppe Losi  
60cm high

£4,000-6,000



For details of our buyers premium which is added onto the hammer price together with any other applicable charges please refer to our guide for prospective buyers





6

**A carved white marble bust of the Venus d'Arles**

Italian, second half 19th century  
70cm high on white and veined marble column pedestal, 185cm high overall

The original statue of the Venus of Arles is in the Musée du Louvre. It is in Hymettus marble and dates to the end of the 1st century BC. It may be a copy of the Aphrodite of Thespieae by Praxiteles, ordered by the courtesan Phryne.

£1,000-1,500

7

**Joseph Edgar Boehm: A carved marble bust of Lieut Col Hon Augustus Frederick Ellis**

signed AVC Fred.Ellis  
Etat24  
J.E.Boehm 1876, After Chantry 1824  
64cm high

Lieutenant-Colonel Hon. Augustus Frederick Ellis 17 September 1800 – 16

August 1841 was a British Army officer and Tory politician.

Ellis was the son of Charles Ellis, 1st Baron Seafood and Elizabeth Catherine Caroline Hervey.

He was educated at Eton College between 1811 and 1814 and commissioned into the 9th Regiment of Light Dragoons in 1817. On 4 October 1821 Ellis purchased a captaincy in the 76th Regiment of Foot.

He stood for the Seafood constituency, a seat controlled by his father, in the 1826 general election. He was returned as the Member of Parliament alongside fellow Tory John Fitzgerald. Ellis vacated the seat to allow George Canning to hold the seat for four months in 1827, before resuming it. He rarely attended the House of Commons and focused on his military career, being promoted to lieutenant-colonel in the 60th Royal Rifles in December 1828. Ellis voted for Catholic emancipation in March 1829.



Sir Joseph Edgar Boehm, 1st Baronet, RA 1834 –1890 was an Austrian-born British medallist and sculptor, best known for the “Jubilee head” of Queen Victoria on coinage, and the statue of the Duke of Wellington at Hyde Park Corner. During his career Boehm maintained a large studio in London and produced a significant volume of public works and private commissions. A speciality of Boehm’s was the portrait bust, as in this example; there are many examples of these in the National Portrait Gallery. He was often commissioned

by the Royal Family and members of the aristocracy to make sculptures for their parks and gardens. His works were many, and he exhibited 123 of them at the Royal Academy from 1862 to his death in 1890.

It is likely that Boehm would have made a copy of Sir Francis Leggatt Chantrey's original executed in 1824 at a cost of £105, probably for another family member.

£1,500-2,500

8

**A carved white marble fountain and pool base**

circa 1900  
130cm high; pool 120cm diameter

£2,000-4,000



For details of our buyers premium which is added onto the hammer price together with any other applicable charges please refer to our guide for prospective buyers





9

**Emile Wolff: A carved white marble group of the sleeping cupid and a dog**

signed E. Wolff Fe Roma 1870  
44cm high by 100cm long

Emil Wolff (1802–1879) was a 19th-century German sculptor and occasional artist in oil paints.

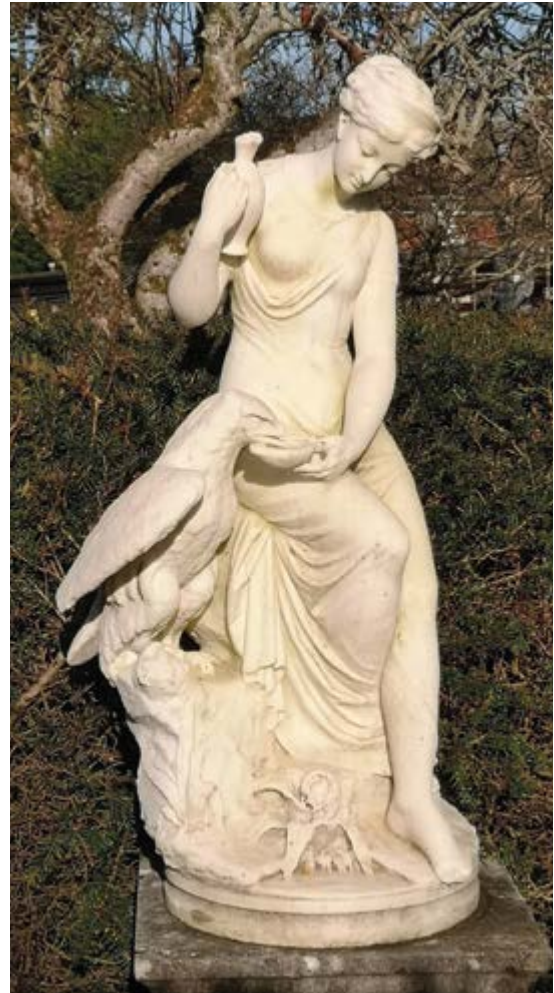
He was born in Berlin on 2 March 1802. From 1815 he studied at the Prussian Academy of Arts in Berlin. He won a scholarship to study in Rome in 1822 under Bertel Thorwaldsen. In 1854 King Friedrich Wilhelm IV purchased “Najade” for erection at Sanssouci. This was removed in 1985 due to erosion but replaced with a replica in 2017. In 1865 he exhibited at the Dublin International Exhibition.

He died in Rome on 29 September 1879.

£2,000-4,000

Online bidding via SummersPlace Live - register through [www.summersplaceauctions.com](http://www.summersplaceauctions.com)  
No surcharge (*normal BP and VAT apply*)

8



10

**Aristide Fontana**

A carved white marble group of Hebe and Zeus in the form of an eagle, circa 1880  
signed Aristide Fontana Sc  
Carrara  
102cm high

£1,000-1,500



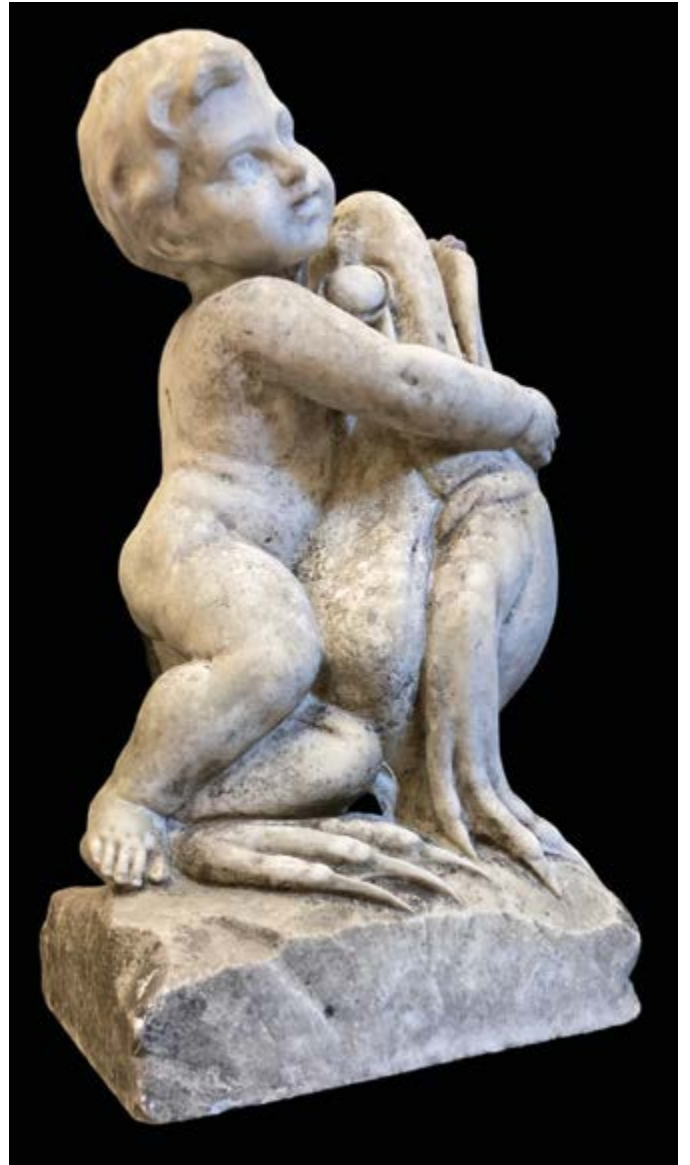


11

**A carved white fountain  
group**

early 20th century  
66cm high

£4,000-6,000



For details of our buyers premium which is added onto the hammer price together with any other applicable charges please refer to our guide for prospective buyers



12

### **A monumental and important carved marble sundial**

Portuguese, Oporto region, mid 18th century  
357cm high by 130cm wide by 62cm deep

Portugal has a rich tradition of country houses and manors indigenously known as solares or quintas. Some were modelled on the great 18th century gardens of Le Notre and other landscape architects in France. Under King Joao, himself a great patron of the arts, began the great 18th century period of Portuguese baroque. The previous austere architectural style albeit heavily influenced by renaissance Italy was replaced with exuberance. With great profits from its colonies and most especially gold and precious stones from Minas Gerias and the Sertao of Sao Paulo in Brazil, it was the golden era of Portuguese architecture and ornament.

From it there emerged a new artistic language. Named the Joanine, in honour of the king, it was an architectural style that transformed quintas not only in Portugal but also in the nation's Atlantic provinces and overseas colonies. This spectacular sundial, monumental in scale



Online bidding via SummersPlace Live - register through [www.summersplaceauctions.com](http://www.summersplaceauctions.com)  
No surcharge (*normal BP and VAT apply*)



incorporates many architectural elements synonymous with the baroque architecture of the mid 18th century.

It was a highly creative Italian who created a style of this style of architecture perfectly suited to Northern Portugal. Born in 1691 and trained in Sienna Nicolau Nasoni arrived in Oporto in 1725. Having established his reputation modernising the city's cathedral, he was commissioned by Jeronimo de Tavora e Noronha to build the Church of Clerigos, one of Oporto's great 18th century churches. Commissions for other churches and quintas followed of which the most well known is the grand solar de Mateus, known all over the world for the rose wine bearing its name.

The architectural composition of this sundial probably owes more to the façade of the Cas dos Porto Carreiro. Commissioned by Antonio de Vasconcelos Carvalho e Menezes, a wealthy Portugese noble who made part of his wealth in Brazil it was constructed by a Spanish architect but heavily influenced by Nasoni's work. The volute scrolls and the foliate elements as well as the stylized lambrequins all echo Nasoni's designs for the gilt woodwork of Oporto churches.

Please see our website for additional images.

£60,000-100,000



For details of our buyers premium which is added onto the hammer price together with any other applicable charges please refer to our guide for prospective buyers



### A rare pair of Coade stone oval plaques

late 18th century

in modelled relief with a Roman sacrifice of a bull  
and Cupid being placed on the altar of love

the back of both inscribed in pencil  
From Gt Saxham Hall around 1772

33cm high by 40 cm wide

Eleanor Coade (d.1821) opened her Lambeth Manufactory for ceramic artificial stone in 1769, and appointed the sculptor John Bacon as its manager two years later. She was employed by all the leading late 18<sup>th</sup> Century architects. From about 1777 she began her engraved designs, which were published in 1784 in a catalogue of over 700 items entitled *A Descriptive Catalogue of Coade's Artificial Stone Manufactory*. Then in 1799, the year she entered into partnership with her cousin John Sealy, she issued a handbook of her Pedlar's Lane exhibition Gallery. The firm became Coade and Sealey from this date and following Sealey's death in 1813, it reverted to Coade and in 1821 with the death of the younger Eleanor Coade, control of the firm passed to William Croggan, who died in 1835, following bankruptcy. Coade's manufactures resembling a fine-grained natural stone, have always been famed for their durability.

Great Saxham Hall in Suffolk was rebuilt following a fire in the Palladian style by the architect Joseph Patience, a student of Sir John Soane and was finished in 1798. Alison Kelly in *Mrs Coade's stone* records that plaques and a coat of arms was supplied by the Coade manufactory, most of the plaques were removed circa 1840, however a spectacular Coade gothic folly stamped Coade and Sealy still stands.

Literature: *Mrs Coade's Stone* by Alison Kelly published 1990 pages 169,209,214 and 325

£2,500-4,000





14

**A pair of rare terracotta eagles**

late 19th century  
each with indistinct makers stamp  
Blanchard Terracotta London  
64cm high

Mark Henry Blanchard served his  
apprenticeship with the Coade Company  
and around 1839 established his own

manufactory in London. It is believed that  
in 1883 he moved his workshops to Bishops  
Waltham, to be nearer to the source of clay  
that he used. By the middle of the century,  
he had emerged as the leading manufacturer  
of terracotta in Britain, he was awarded prizes  
for his exhibit at the Great Exhibition of  
1851. Amongst the many properties where his  
produce can be seen is the South Kensington  
Museum (now the Natural History Museum).

£3,000-5,000

For details of our buyers premium which is added onto the hammer price together with any other applicable charges please refer to our guide for prospective buyers



15  
**A pair of substantial  
 Doulton stoneware urns**

late 19th century  
 with makers stamp  
 Doultan & Co. Lambeth  
 98cm high

These urns are illustrated  
 in the 1894 Doultan and  
 Co catalogue of Terra  
 Cotta Garden Vases no  
 160

£1,200-1,800

16

**A terracotta Albani urn**

early 20th century  
 on associated composition stone  
 pedestal  
 113cm high by 96cm wide

£1,000-1,500



**A pair of rare Austin and Seeley composition stone urns**

second half 19th century  
on carved Portland stone  
pedestals  
53cm high by 73cm  
diameter  
128cm high overall

Felix Austin went into business in 1828 having bought moulds from a firm that had gone out of business. He established works in New Road, London, describing himself variously as an architect, statuary mason and sculptor as well as artificial stone maker. His material was not the same as the ceramic body used by Mrs Coade but made from Portland cement, broken stone, pounded marble and coarse sand (The Builder 1868). However, like Mrs Coade, he encouraged leading architects and designers to work for him. Around 1840 he entered into partnership with John Seeley. Seeley had trained at the Royal Academy Schools and also made an artificial stone which he called artificial limestone, before entering into partnership with Austin.



In 1841 they published their first catalogue, *Pleasure Grounds* etc. from their address in New Road. The preface begins "Austin's Artificial Stone is of a light tint, requires no painting or colouring, will not sustain injury from the severest winter,

and, being impervious to wet, is particularly applicable to all kinds of water works. Its superiority is now so thoroughly established, that the most eminent architects and scientific gentlemen have expressed, in their highest terms, their approbation

of its durability, and close resemblance to the real stone".

£6,000-10,000



For details of our buyers premium which is added onto the hammer price together with any other applicable charges please refer to our guide for prospective buyers

### Edward Hodges Bailey (British, 1788-1867)

Nelson receiving the Spanish surrender after the Battle of St Vincent  
circa 1826

A white marble relief frieze panel in two sections  
146cm high x 376cm overall length  
the larger section 46cm at maximum depth, the smaller 35cm

Edward Hodges Baily RA FRS was a prolific English sculptor responsible for numerous public monuments, portrait busts, statues and exhibition pieces as well as works in silver. He carved friezes for both the Marble Arch and Buckingham Palace in London. His numerous statues of public figures include that of Horatio Nelson on top of Nelson's Column and Charles Grey, 2nd Earl Grey on Grey's Monument in Newcastle upon Tyne. Throughout his career Baily was responsible for creating a number of monuments and memorials for British churches and cathedrals, including several in St Paul's Cathedral.

The scene depicts the Spanish Admiral Don Francisco Xavier Winthuysen, who lies dying on a gun carriage of the deck of the San Josef. He weakly hands his sword to Nelson while supported by two sailors, watched by other sailors and British officers. The Battle of Saint Vincent took place on 14 February 1797 and established Nelson as a hero, both for his independence of command and his personal bravery. It was also a turning point for the British Navy who had previously been driven out of the Mediterranean following French successes in Italy. The English fleet under Admiral Sir John Jervis, with only fifteen ships, drove a line through the larger and superior Spanish navy which was lying off Cape St. Vincent, Portugal. Before Jervis could turn to attack the larger group, Nelson broke line in the Captain, anticipating his commander's signal, and accompanied by other British frigates, took four Spanish 'prizes' from the rear, himself personally boarding the San Nicolas

and San Josef. The British victory demonstrated the ineptitude of the Spanish navy, and Nelson was made a Knight of the Bath for his exploits, while Jervis was created Earl St Vincent. A similar scene was recorded in a more dramatic and romantic manner in a painting of 1806 by Richard Westall but on the San Nicolas (National Maritime Museum, Greenwich). Interestingly, in the Nash/Flaxman model in the Victoria and Albert Museum (south side, not shown) Flaxman's composition is the other way round with Nelson standing on the left to receive the sword with his right hand. It must be assumed that because his right arm was amputated later in 1797 (at the battle of Santa Cruz de Tenerife) Baily reversed the action, to disguise the missing limb. Thus the hero receives the sword with his left hand which disjoins the action of the full scheme of the frieze. (Westall had to find a similar solution in his painting). Baily's composition makes interesting comparison with Westmacott's *melée* in the Napoleon frieze. Here we have classical purity, the figures starkly arranged in a Grecian style frieze and in noble profile. Then to focus attention on the action of surrender, Baily breaks up the powerful verticals of sailors and officers by tilting up the gun carriage, on which the dying Spanish commander lies, and using the device of a coil of rope to support one kneeling sailor. The action is thus cleverly foreshortened and succeeds in instilling a certain pathos into the scene of a row of almost emotionless faces. This is accentuated by the austerity of composition and refreshing use of empty space in the background.

This historic frieze in two sections is already professionally packed in two bespoke wooden crates ready for shipping.

Provenance: Private collection, The Manor of Littleton, Shepperton, Middlesex

Sotheby's 12th May 1995, Lot 181

Removed from an office redevelopment in Central London in 2022

£20,000-40,000

Online bidding via SummersPlace Live - register through [www.summersplaceauctions.com](http://www.summersplaceauctions.com)  
No surcharge (*normal BP and VAT apply*)





For details of our buyers premium which is added onto the hammer price together with any other applicable charges please refer to our guide for prospective buyers



19

**A substantial Victorian gothic carved Cotswold stone sundial**

circa 1860  
with later 12" bronze dial on square plinth  
152cm high

£3,000-5,000

Online bidding via SummersPlace Live - register through [www.summersplaceauctions.com](http://www.summersplaceauctions.com)  
No surcharge (*normal BP and VAT apply*)

### A Georgian carved Portland stone sundial

mid 18th century  
with later rare Austin and Seeley 12" slate dial with  
bronze gnomon  
126cm

The firm of Austin and Seeley was known for making composition stone ornament in the second half of the 19th century. This rare slate dial is likely to have been produced as a one off commission

£1,200-1,800



For details of our buyers premium which is added onto the hammer price together with any other applicable charges please refer to our guide for prospective buyers



21

**A carved alabaster group of  
mother and child on garden  
seat**

Italian, circa 1900

46cm high by 58cm long  
on associated carved serpentine  
rotating column pedestal with  
D-shaped top, 123cm high  
overall 169cm high

£2,000-4,000



Online bidding via SummersPlace Live - register through [www.summersplaceauctions.com](http://www.summersplaceauctions.com)  
No surcharge (*normal BP and VAT apply*)

22

**A rare pair of carved  
Cotswold limestone  
scroll pots**

19th century  
51cm high by 69cm  
diameter

This design which was copied and popularised by the Compton Pottery in Surrey set up in the early 20th century by the social reformer Mary Seton Watts to whom the original model has sometimes been erroneously attributed. The design was furthered copied in the latter period of the 20th century in composition stone, however it is extremely rare to find this model carved in stone prior to the Compton pottery examples.

£2,000-4,000



23

**A similar slightly smaller  
pair of carved Cotswold  
limestone scroll pots**

19th century  
45cm high by 61cm  
diameter

£2,000-4,000



For details of our buyers premium which is added onto the hammer price together with any other applicable charges please refer to our guide for prospective buyers





24

**A pair of Victorian  
carved Cotswold stone  
urns**

circa 1860  
on plinths  
62cm high

£800-1,200

Online bidding via SummersPlace Live - register through [www.summersplaceauctions.com](http://www.summersplaceauctions.com)  
No surcharge (*normal BP and VAT apply*)





25

**A carved Portland stone  
curved bench**

circa 1900  
238cm long

£2,000-3,000

26

**A carved Portland stone  
bench**

circa 1900  
115cm long

£600-1,000



For details of our buyers premium which is added onto the hammer price together with any other applicable charges please refer to our guide for prospective buyers





27

**An extremely rare  
and massive carved  
sandstone oval table**

19th century  
on four associated  
saddle stone supports  
316cm long by 196cm  
wide

See our website for  
further images.

£12,000-18,000

Online bidding via SummersPlace Live - register through [www.summersplaceauctions.com](http://www.summersplaceauctions.com)  
No surcharge (*normal BP and VAT apply*)





28

**A pietra dura marble  
table top**

19th century or earlier  
on associated modern  
metal base  
208cm by 104cm

£4,000-6,000



For details of our buyers premium which is added onto the hammer price together with any other applicable charges please refer to our guide for prospective buyers





29

### A pair of rare Handyside cast iron urns on pedestals

2nd half 19th century  
bearing brass makers plaque A Handyside limited London and Derby  
114cm high by 104cm diameter

It's extremely rare to find a pair of Handyside urns with attached makers plaque.

Andrew Handyside started the foundry in 1806 and by 1851 the firm had expanded and was operating out of the Britannia Iron Works in Derby. At the Great Exhibition they exhibited a Medici vase, a bacchanalian vase and a bronzed vase decorated with busts of Peel, Nelson, Watt, Wellington, Stephenson, Scott, Shakespeare and Milton, together with a fountain. At the time, the foundry was described as being "from the magnitude of its operations, second to none in England". They produced two catalogues in 1848 and 1874. See engraving

This model is illustrated in the 1848 Handyside catalogue no 5a

£1,500-2,500

Online bidding via SummersPlace Live - register through [www.summersplaceauctions.com](http://www.summersplaceauctions.com)  
No surcharge (*normal BP and VAT apply*)



30

**A pair of cast iron urns on pedestals attributed to the Handyside foundry**

second half 19th century  
122cm high by 96cm diameter

See footnote to previous lot

£4,000-6,000

For details of our buyers premium which is added onto the hammer price together with any other applicable charges please refer to our guide for prospective buyers



31

**An unusual cast iron sundial**

2nd half 19th century  
with later bronze dial  
104cm high

£500-800



32

**A cast iron stick stand**

late 19th century  
with lift out drip tray  
stamped No 269  
76cm high

£400-600

Online bidding via SummersPlace Live - register through [www.summersplaceauctions.com](http://www.summersplaceauctions.com)  
No surcharge (*normal BP and VAT apply*)





33

**A Falkirk cast iron stick stand**

late 19th century  
with lift out drip tray and  
Stamped Falkirk No 20 and  
with diamond registration  
stamp and number  
77cm high

£400-600



34

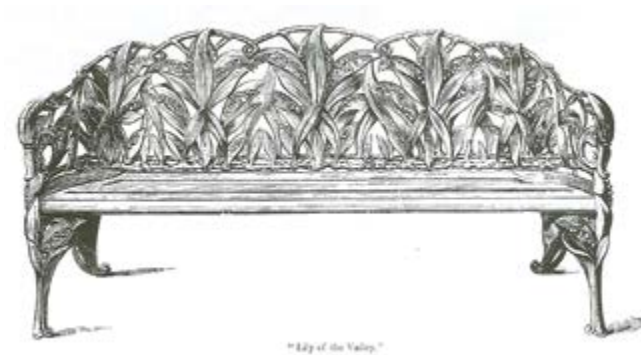
**A rare Coalbrookdale  
Fern pattern cast iron  
stick stand**

circa 1870  
with lift out drip trays  
foundry marks possibly  
obscured by paint  
62cm high by 63cm wide

£500-800



For details of our buyers premium which is added onto the hammer price together with any other applicable charges please refer to our guide for prospective buyers



35

**A Coalbrookdale Lily of the Valley pattern cast iron seat**

circa 1870  
stamped CBDale & Co  
153cm long

This design, number 171578 was registered and patented at the Public Records Office on the 8th February 1864 by Coalbrookdale and was seat number 36 in their castings catalogue of 1875.

£3,000-5,000

Online bidding via SummersPlace Live - register through [www.summersplaceauctions.com](http://www.summersplaceauctions.com)  
No surcharge (*normal BP and VAT apply*)





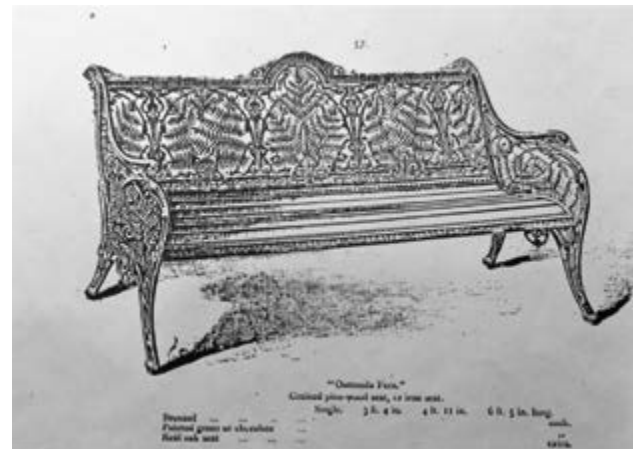
36

**An extremely rare Coalbrookdale Osmunda fern pattern cast iron seat**

circa 1870  
fully stamped Coalbrookdale and with diamond registration stamps, registration number and pattern No 57  
194cm long

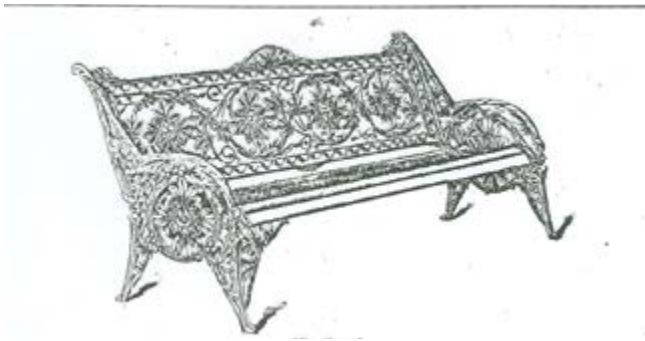
for footnote please visit our website

£7,000-10,000



For details of our buyers premium which is added onto the hammer price together with any other applicable charges please refer to our guide for prospective buyers





37

### A Coalbrookdale Horse chestnut pattern cast iron seat

circa 1870

stamped Coalbrookdale and with diamond registration stamps

185cm long

The design of this seat, number 217568, was registered and patented by the Coalbrookdale Iron Foundry at The Public Record Office on 23rd March 1868, and is number 46 in their 1875 Castings Catalogue, Section III, page 256.

£3,000-5,000

Online bidding via SummersPlace Live - register through [www.summersplaceauctions.com](http://www.summersplaceauctions.com)

No surcharge (*normal BP and VAT apply*)

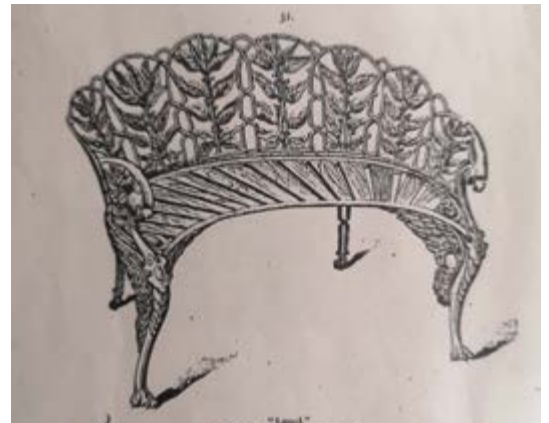




38

**A rare pair of Coalbrookdale Laurel pattern cast iron seats**

last quarter 19th century  
 both fully stamped CB Dale Co and with diamond  
 registration stamp and number and pattern No 31  
 120cm long.  
 This design number 129358 was registered on 25th  
 May 1860 and is number 31 in the 1875 Coalbrookdale  
 catalogue, section III page 263.  
 £7,500-10,000



For details of our buyers premium which is added onto the hammer price together with any other applicable charges please refer to our guide for prospective buyers





39

**A pair of  
Coalbrookdale Fern  
and Blackberry  
pattern chairs**

last quarter 19th  
century  
stamps possibly  
obscured by paint

This design is  
illustrated in the  
1875 Coalbrookdale  
catalogue section III  
no S29

£1,000-1,500



40

**A rare Falkirk  
foundry zodiac  
pattern cast iron  
table**

late 19th/early 20th  
century  
81cm diameter

This design is  
registered in the  
falkirk foundry  
catalogue plate 315

£600-1,000

Online bidding via SummersPlace Live - register through [www.summersplaceauctions.com](http://www.summersplaceauctions.com)  
No surcharge (*normal BP and VAT apply*)

41

**A cast iron and wooden seat**

circa 1870  
152cm long

£500-800



42

**A Regency reeded wrought iron seat**

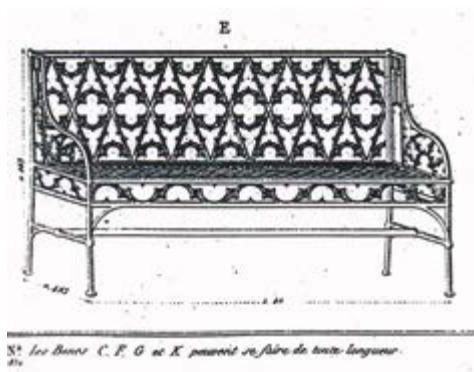
early 19th century  
168cm long

£800-1,200



For details of our buyers premium which is added onto the hammer price together with any other applicable charges please refer to our guide for prospective buyers





43

A Val d'Osne foundry Gothic pattern cast iron seat

circa 1870  
190cm long

£600-1,000

Online bidding via SummersPlace Live - register through [www.summersplaceauctions.com](http://www.summersplaceauctions.com)  
No surcharge (normal BP and VAT apply)



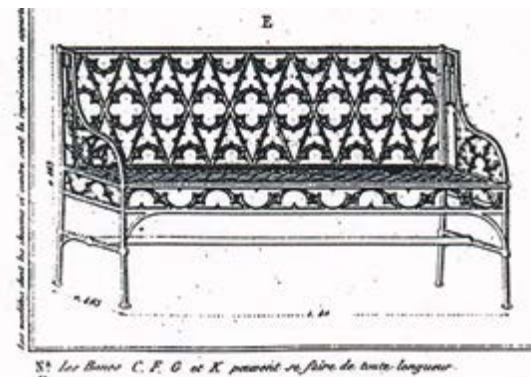


44

A Val d'Osne foundry gothic pattern cast iron seat

French  
circa 1870  
144cm long

£600-1,000



For details of our buyers premium which is added onto the hammer price together with any other applicable charges please refer to our guide for prospective buyers





45

**An exceptionally rare rain recording gauge by Negretti & Zambra of London with serial No M/2004**

early 20th century  
with maker's plaque inscribed Negretti and Zambra,  
trademark London, together with a packet of original rain  
gauge papers  
67cm high

£1,500-2,500



46

**A harlequin set of three substantial carved sandstone staddle stones**

average height 94cm high

£1,500-2,500

Online bidding via SummersPlace Live - register through [www.summersplaceauctions.com](http://www.summersplaceauctions.com)  
No surcharge (*normal BP and VAT apply*)

**Tom Merrifield.**

La Donna

Bronze, Signed T. Merrifield and numbered 2/2, 225cm high

Born in 1932 in Sydney, Australia, Tom Merrifield trained as a classical dancer and at the age of sixteen became the youngest lead soloist with the Borovansky Ballet. Three years later he moved to Britain where he danced with the English National Ballet, enjoying an incredibly successful career in this challenging discipline. Throughout the 1950s, 60s and 70s Tom was principal dancer in many of the most successful West End musicals to date including 'On The Town', 'West Side Story' and 'Showboat' and at the pinnacle of his career was the highest paid dancer in the UK. During this distinguished and rewarding career, Tom began drawing and sculpting without any formal art training and eventually took this up as a full-time occupation, looking back only for inspiration in his new passion. He has since gone on to be formally recognised as a major artist and one of the finest sculptors of his generation, being given the incredible accolade of ARBS for Distinction in the Art of Sculpture by the Royal Society of British Sculptors. In 1976 Tom was commissioned by the Society for West End Theatres to create the sculpture given to the winners of The Olivier Awards (then named the SWET Awards). For the next eight years he would spend months preparing the numerous pieces required for each ceremony which so many of theatre's top talent now hold in pride of place on their mantelpieces. Possibly the most poignant of sculptures Tom has created is that depicting Diana, Princess of Wales. Having met and connected instantly with the Princess long before she died, Tom was considered by the British Red Cross to be best suited to create an exquisite bust of their former patron; now displayed at the Red Cross headquarters in London. Tom has gone on to become internationally celebrated for the power and beauty of his sculptures, many of which now grace prominent public spaces around the world. He has also been awarded substantial, lucrative commissions by the likes of Hilton Group, Speedo, The British Red Cross and Reebok. Some of his works depict famous dancers, including Alina Cojocaru, Dame Alicia Markova, Dame Beryl Grey, Natalia Makarova, Marguerite Porter, Ivan Nagy, and the Olympic Skater John Curry. Tom passed away in 2021 and this sale, consigned by his Executors, includes many of his favourite pieces which were in the garden of his home in Hampstead providing a unique opportunity to acquire works by one of Britain's leading sculptors.

£4,000-6,000

For details of our buyers premium which is added onto the hammer price together with any other applicable charges please refer to our guide for prospective buyers





**Tom Merrifield**

Sparticus

Bronze

signed T. Merrifield, numbered 3/9 and with meridian  
Foundry stamp

320cm high

This depicts a dancer in the role of Sparticus from the ballet of the same name by Aram Khachaturian 1903-1978, which was first performed in Leningrad in 1956 and later premiering in London with the Bolshoi Ballet was in 1969.

The story of the Sparticus leading his rebel army of gladiators and slaves against the rule of empire in ancient Rome already been made famous by the 1951 book and later the 1960 Stanley Kubrick film starring Kirk Douglas in the title role.

£15,000-25,000



Online bidding via SummersPlace Live - register through [www.summersplaceauctions.com](http://www.summersplaceauctions.com)  
No surcharge (*normal BP and VAT apply*)

**Tom Merrifield**

Valentina  
Bronze  
on pedestal  
the figure 167cm high  
226cm overall  
The last from an edition of 2

£6,000-10,000



For details of our buyers premium which is added onto the hammer price together with any other applicable charges please refer to our guide for prospective buyers





Online bidding via SummersPlace Live - register through [www.summersplaceauctions.com](http://www.summersplaceauctions.com)  
No surcharge (*normal BP and VAT apply*)

50

**Tom Merrifield**

**Flight**

Bronze and stainless steel  
signed Tom Merrifield  
and numbered 2/5 MS on  
composition stone plinth  
the frame 293cm high  
the figure 195cm long  
374cm high overall on  
pedestal  
overall width 350cm  
From an edition of 5. Four  
already sold

£25,000-40,000



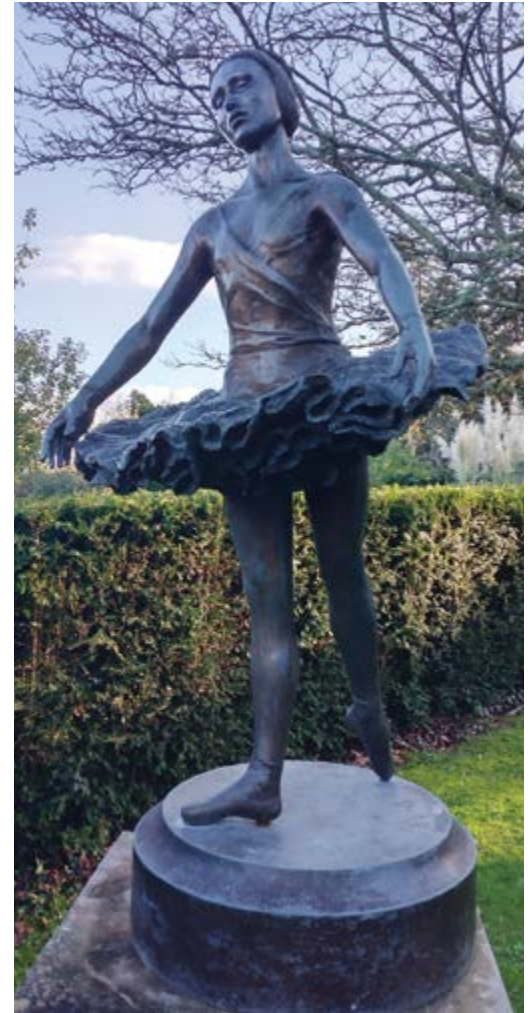
51

**Tom Merrifield**

**Julius torso**

Bronze  
on pedestal  
signed T. Merrifield and  
numbered 4/9  
the torso 118cms high  
216cm high overall  
7 out of 9 casts sold

£3,000-5,000



52

**Tom Merrifield**

**Poppy**

Bronze, 150cm high  
from an edition of 9, one donated to  
Basingstoke Council

£3,000-5,000

For details of our buyers premium which is added onto the hammer price together with any other applicable charges please refer to our guide for prospective buyers





53

▲ **Housi Knecht**

Musical keys fountain  
sheet metal and stainless steel, the sphere plumbed for water  
415cm high

Housi Knecht, a Bernese artist, was born in 1951. When he was 20 years old, he emigrated to Australia. But then he came back and opened his first artist studio in the old town of Bern in 1971. In 1982 he married Barbara M. Scheidegger. In 2014 Housi and Barbara purchased the Rubigen Manor house and created an art and sculpture park.

£2,000-4,000

Online bidding via SummersPlace Live - register through [www.summersplaceauctions.com](http://www.summersplaceauctions.com)  
No surcharge (*normal BP and VAT apply*)

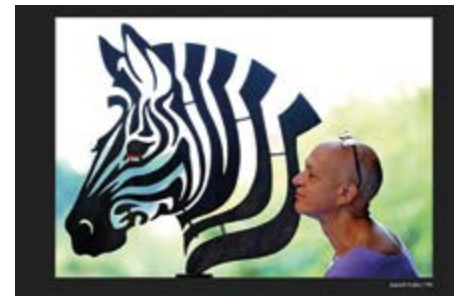
### **Misti: I Weep For Nature**

Burnt oak, stained lime wood and stainless steel  
2020, 100cm high by 73cm wide by 40cm deep

TO BE AUCTIONED FOR THE  
CHARITY STUMP UP FOR TREES

Made for the sculpture challenge on Handmade: Britain's Best Woodworker, a reality television competition screened on Channel 4 in 2021. The brief was to produce a one metre tall sculpture of an animal in just two days, and this piece was awarded first place by the judges, and contributed to my overall win in the competition. Misti the artist comments; While I may have a good eye for a curve, and an understanding of proportion, accurate representation of tricky things like hands and faces is really not my given talent, so I needed to find a way of abstracting a recognisable subject matter while at the same time leaving the viewer in no doubt as to what it was. By their very nature Zebras offer a great opportunity for both graphic and sculptural statements, so I settled on this magnificent animal as my subject matter, and presented it in the manner of a portrait bust to lend it a quiet dignity. The choice to create the head as a flat and fretted image means that it is only truly visible from face on, and this, coupled with the careful manipulation of form and negative space reflects its ability to camouflage itself. However, sculpture isn't just necessarily just about three dimensional representation of subject matter, and often the most powerful pieces send a message, so just before I started, I decided to add a tear of blood, carved in lime wood, for it to cry in despair at man's rape and destruction of nature. In the end, while the zebra part of this piece worked beautifully, for me it became more a portrait of the tear than the animal, resulting in a poignant work that invites the viewer to consider their impact on our planet

£2,000-3,000



For details of our buyers premium which is added onto the hammer price together with any other applicable charges please refer to our guide for prospective buyers





55

**An unusual bronze wall fountain**

early 20th century  
inscribed *sed aqua quam  
dabo ei fiet in eo fons  
aquae salientis  
in vitam aeternum*  
210cm high by 125cm  
wide

The translation of the  
latin inscription reads; but  
the water that I shall give  
him shall become in him  
a fountain of water into  
eternal life

£3,000-5,000



56

**Frederic Chevarin**

Trois Feuilles  
Statuary marble  
Unique  
68cm high by 46cm wide by 30cm deep

£9,000-10,000



57

**Frederic Chevarin**

Reveur  
Bronze  
75cm high by 40cm wide by 30cm deep

£8,000-10,000

For details of our buyers premium which is added onto the hammer price together with any other applicable charges please refer to our guide for prospective buyers





58

**Gail Dooley**

Hunched Heron,  
Stoneware  
Signed, 2014  
86cm high by 35cm wide by 45cm deep

£1,200-1,800

Online bidding via SummersPlace Live - register through [www.summersplaceauctions.com](http://www.summersplaceauctions.com)

No surcharge (*normal BP and VAT apply*)

48



59

**Gail Dooley**

Heron  
Stoneware  
108cm high by 30cm wide by 50cm deep

£1,200-1,800

60

**A bronze heron**

second half 20th century  
Monogrammed VB  
and with Morris Singer  
foundry stamp  
on composition stone base

97cm high

£2,000-4,000



For details of our buyers premium which is added onto the hammer price together with any other applicable charges please refer to our guide for prospective buyers





61

**Colin Kellam**

Octopus  
Ceramic/Stoneware  
Unique  
20cm high by 43cm wide by 32cm deep

£800-1,000

62

**A Seymchan meteorite sphere**

A Seymchan meteorite sphere, Madagan district, Russia

This pallasite meteorite was first discovered in 1967 and it is thought about 350KG has been recovered so far. This specimen features not only the characteristic Widmanstatten pattern but Olivine crystal inclusions as well  
13cm diameter, 9.9kg

£55,000-75,000

Online bidding via SummersPlace Live - register through [www.summersplaceauctions.com](http://www.summersplaceauctions.com)  
No surcharge (*normal BP and VAT apply*)



For details of our buyers premium which is added onto the hammer price together with any other applicable charges please refer to our guide for prospective buyers





63

**A Shag by Peter Spicer**

early 20th century  
with label to rear  
74cm high by 63cm wide

Peter Spicer of Leamington Spa is perhaps the most highly regarded of all the British taxidermists and his work is greatly sought after. Always decorative and brilliantly conceived his taxidermy shows not only great skill but also shows enormous understanding of the creatures that he worked with.

£3,000-5,000

64

**A magnificent  
Capercaillie by Peter  
Spicer**

early 20th century  
with label to reverse  
85cm high by 96cm wide

£5,000-8,000



For details of our buyers premium which is added onto the hammer price together with any other applicable charges please refer to our guide for prospective buyers





Online bidding via SummersPlace Live - register through [www.summersplaceauctions.com](http://www.summersplaceauctions.com)  
No surcharge (*normal BP and VAT apply*)

65

**A magnificent pair of  
Sea Eagles by Duncan or  
Cullingford**

late 19th century  
110cm high by 110cm wide

This magnificent pair of eagles was produced towards the end of the 19th century by one of the celebrated school of taxidermists that operated out of the north-east of England. This school specialised in placing their subjects against plain backgrounds so that the birds themselves could be focused on without any complication. This way of proceeding called for the highest level of skill as there was nothing to distract from the effect of the work. This particular case is by Cullingford or Duncan. Their work is very similar and it is often impossible to separate the two.

£6,000-10,000



66

**An anthropomorphic dome of  
two Monitor lizards**

early 20th century  
53cm high

£1,200-1,800

For details of our buyers premium which is added onto the hammer price together with any other applicable charges please refer to our guide for prospective buyers





67

**A hippo skull**

late 19th century  
mounted on shield  
the shield 64cm

£1,500-2,500

Online bidding via SummersPlace Live - register through [www.summersplaceauctions.com](http://www.summersplaceauctions.com)  
No surcharge (*normal BP and VAT apply*)



68

**A rare pair of Bitterns by Hutchings of Aberystwyth with label**

late 19th century  
90cm high by 87cm wide

Hutchings operated in Aberystwyth and he is the best known of all the Welsh taxidermists who were working at the end of the 19th century and start of the 20th. His work is characterised by its high quality and this quality is clearly demonstrated in this case of two bitterns.

£3,000-3,000

For details of our buyers premium which is added onto the hammer price together with any other applicable charges please refer to our guide for prospective buyers



69

**A large glass dome of Australian birds**

late 19th century  
69cm high

£700-1,000





70

**A Ibex trophy**

on shield by Rowland Ward  
early 20th century  
with label to rear  
88cm high

£500-800



71

**An Adu Ram trophy**

on shield by Rowland Ward (initialled to rear)  
circa 1910  
74cm high

£500-800

Online bidding via SummersPlace Live - register through [www.summersplaceauctions.com](http://www.summersplaceauctions.com)  
No surcharge (*normal BP and VAT apply*)



72

**A Tiger skin rug by Van Ingen and Van Ingen**

early 20th century  
with Van Ingen label to back  
250cm long by 182cm wide

£3,000-5,000

For details of our buyers premium which is added onto the hammer price together with any other applicable charges please refer to our guide for prospective buyers





74

**A very large Salmon skin mount by Malloch of Perth**

with data weight 48 1/2lb, River Awe, 1928

51cm by 138cm overall

£5,000-8,000



73

**Two very early P Spicer Otter trophies**

on shields, each with label

1880's

the larger 23cm high

£500-800

Online bidding via SummersPlace Live - register through [www.summersplaceauctions.com](http://www.summersplaceauctions.com)

No surcharge (*normal BP and VAT apply*)

## SUMMERS PLACE AUCTIONS AUTHENTICITY GUARANTEE

If Summers Place Auctions Ltd sells an item which subsequently is shown to be a “counterfeit”, subject to the terms below Summers Place Auctions Ltd will set aside the sale and refund to the Buyer the total amount paid by the Buyer to Summers Place Auctions Ltd for the item, in the currency of the original sale.

For these purposes, “counterfeit” means a lot that in Summers Place Auctions Ltd reasonable opinion is an imitation created to deceive as to authorship, origin, date, age, period, culture or source, where the correct description of such matters is not reflected by the description in the catalogue (taking into account any Glossary of Terms). No lot shall be considered a counterfeit by reason only of any damage and/or restoration and/or modification work of any kind (including repainting or over-painting).

Please note that this Guarantee does not apply if either:-

- (i) the catalogue description was in accordance with the generally accepted opinion(s) of scholar(s) and expert(s) at the date of the sale, or the catalogue description indicated that there was a conflict of such opinions; or
- (ii) the only method of establishing at the date of the sale that the item was a counterfeit would have been by means of processes not then generally available or accepted, unreasonably expensive or impractical to use; or likely to have caused damage to the lot or likely (in Summers Place Auctions Ltd reasonable opinion) to have caused loss of value to the lot; or
- (iii) there has been no material loss in value of the lot from its value had it been in accordance with its description.

This Guarantee is provided for a period of five (5) years after the date of the relevant auction, is solely for the benefit of the Buyer and may not be transferred to any third party. To be able to claim under this Guarantee, the Buyer must:-

- (i) notify Summers Place Auctions Ltd in writing within three (3) months of receiving any information that causes the Buyer to question the authenticity or attribution of the item, specifying the lot number, date

of the auction at which it was purchased and the reasons why it is thought to be counterfeit; and

- (ii) return the item to Summers Place Auctions Ltd in the same condition as at the date of sale to the Buyer and be able to transfer good title in the item, free from any third party claims arising after the date of the sale.

Summers Place Auctions Ltd has discretion to waive any of the above requirements. Summers Place Auctions Ltd may require the Buyer to obtain at the Buyer's cost the reports of two independent and recognised experts in the field, mutually acceptable to Summers Place Auctions Ltd and the Buyer. Summers Place Auctions Ltd shall not be bound by any reports produced by the Buyer, and reserves the right to seek additional expert advice at its own expense. In the event Summers Place Auctions Ltd decides to rescind the sale under this Guarantee, it may refund to the Buyer the reasonable costs of up to two mutually approved independent expert reports.

## GUIDE FOR PROSPECTIVE BUYERS

### 1. Buyer's Premium Rates

The buyer's premium payable by the buyer of each lot is at a rate of 25% on the first £250,000, then 20% on the amount by which the hammer price exceeds £250,000, plus an amount in respect of VAT thereon (see below).

### 2. VAT on Hammer Price and Buyer's Premium and VAT Symbols in the Catalogue

#### Property with no VAT symbol

Where there is no VAT symbol, Summers Place Auctions Ltd are able to use the Auctioneer's Margin Scheme and VAT will not normally be charged on the hammer price. Summers Place Auctions Ltd must bear VAT on the buyer's premium and hence will charge an amount in lieu of VAT at 20% on this premium, which will not be shown separately on the invoice.

#### Property with a † symbol

These items will be sold under the normal UK VAT rules and VAT will be charged at 20% on both the hammer price and buyer's premium.



### Property with a @ symbol

It is assumed that items sold to buyers whose address is in the European Union (EU) will be remaining in the EU. The property will be invoiced as if it had no VAT symbol.

It is assumed that items sold to buyers whose address is outside the EU, will be exported from the EU. The property will be invoiced under the normal VAT rules (see 'Property with a † symbol above).

### Property sold with a ‡ or Ω symbol

These items have been imported to be sold at auction under temporary importation. When Summers Place Auctions Ltd release such property to buyers in the UK, the buyer will become the importer and must pay Summers Place Auctions Ltd import VAT at the following rates on the hammer price:

‡ @ 5% Ω @ 20%

Summers Place Auctions Ltd must bear VAT on the buyer's premium and hence will charge an amount in lieu of VAT at 20% on this premium, which will not be shown separately on the invoice.

### VAT Refunds

VAT may be cancelled or refunded on export if strict conditions are met and a fee of £30 plus VAT will be charged for this service. For advice, please contact us on 01403 331 331

### Sales and Uses Taxes

Buyers from outside the UK should note that local sales taxes or use taxes may become payable upon import of items following purchase (for example, the Use Tax payable on import of purchased items to certain states of the USA). Buyers should obtain their own advice in this regard.

### Artist's Resale Right

Purchase of lots marked with the following symbol ▲ will be subject to payment of the Artist's Resale Right, at a percentage of the hammer price calculated as follows:

Portion of the hammer price (in) Royalty Rate

From 0 to 50,000 4%

From 50,000.01 to 200,000 3%

From 200,000.01 to 350,000 1%

From 350,000.01 to 500,000 0.5%

Exceeding 500,000 0.25%

The Artist's Resale Right payable will be the aggregate of the amounts payable under the above rate bands, subject to a maximum royalty payable of €12,500 for any single work each time it is sold. The maximum royalty payable of €12,500 applies to works sold for €2 million and above. Calculation of the artist's resale right will be based on the Pounds Sterling / Euro reference exchange rate quoted on the date of the sale by the European Central Bank.

### Property with a ♠ symbol.

Some of these items require specialist dismantling and may not be available for immediate collection after the sale. Intending purchasers should check the status of these lots before the sale.

## 3. Before the Auction

### Pre-sale Estimates

Pre-sale estimates are intended as a guide for prospective buyers but all lots can realise prices above or below the pre-sale estimates. Seller's confidential reserves are set no higher than the low pre-sale estimates, except in the rare circumstance in which the reserve has been set in a foreign currency and the exchange rate has fluctuated.

It is advisable to consult us nearer the time of sale as estimates can be subject to revision. The estimates printed in the auction catalogue do not include the buyer's premium or VAT.

### Provenance

In certain circumstances, Summers Place Auctions Ltd may print in the catalogue the history of ownership of a work of art if such information contributes to scholarship or is otherwise well known and assists in distinguishing the work of art. However, the identity of the seller or previous owners may not be disclosed for a variety of reasons. For example, such information may be excluded to accommodate a seller's request for confidentiality or because the identity of prior owners is unknown given the age of the work of art.

## C.I.T.E.S.

All the relevant lots in this sale have been carefully vetted, mindful of current C.I.T.E.S. regulations, concerning the sale of endangered species. We are happy to provide advice on any lots, to overseas buyers concerning export restrictions. However, it is ultimately the buyers responsibility to satisfy themselves that the correct licenses can be obtained prior to bidding.

## Condition of Lots

All lots are available for inspection and Condition Reports are available on request. However, all lots are of an age and type which means that they may not be in perfect condition and should be viewed by prospective bidders; please refer to Condition 3 of the Conditions of Business for Buyers.

### Electrical and Mechanical Goods

All electrical and mechanical goods are sold on the basis of their artistic and decorative value only, and should not be assumed to be operative. It is essential that any electrical system is checked and approved by a suitably qualified electrician, prior to use.

## 4. The Auction

Auction speeds vary, and generally average between 50 and 120 lots per hour. The auctioneer will commence and advance the bidding at levels and in increments he considers appropriate (generally in increments of approximately 10% of the previous bid) and is entitled to place a bid or series of bids on behalf of the seller up to the reserve on the lots, without indicating he is doing so and whether or not other bids are placed.

Please note Conditions 5 and 6 of the Conditions of Business for Buyers contain additional information on bidding.

### Bidding in Person

To bid at auction you must register with us to obtain a bidding number. Before the auction, fill in the form at the registration desk, provide proof of identity, and you may be given a paddle showing your bidding number. This paddle should be used for bidding. The auctioneer will note this number when you purchase a lot.

## Live Auctions

The auction takes place in the gallery with each lot displayed on a plasma screen as it is sold. Prospective purchasers are encouraged to attend the sale and must register their details with us beforehand. Bidding is by numbered paddle.

### Absentee Bids

If you cannot attend the auction we will be happy to execute written bids on your behalf, so long as you have registered your details with us beforehand and are compliant with AML regulations. A bidding form is printed in the back of the catalogue. This service is confidential. Lots will always be bought as cheaply as is consistent with other bids, the reserves and other commission bids. To avoid confusion, the sale date, lot number and a brief description should be filled in and signed. Commission bids by email without a signature will not be accepted. In the event of identical bids, the earliest received will take precedence. Always indicate a top limit, i.e. the highest price you would bid if you were attending the auction. Don't forget that buyers premium and any VAT applicable will also be added onto your bid if you are successful. "Buy" and unlimited bids will not be accepted. Please refer to our conditions of business for buyers, which is also printed in the back of our catalogues. To ensure a satisfactory service please ensure that we receive your bids at least 24 hours beforehand.

### Telephone bids

If you cannot attend the auction, it is usually possible to bid on the telephone. You will need to have registered your details with us 5 days before the auction. As the number of telephones is limited, it is necessary to make arrangements on which lots you wish to bid on, at least 24 hours before the sale. We also suggest that you leave a maximum bid which we can execute on your behalf in the event we are unable to reach you by telephone. Please refer to our conditions of business for buyers, which is also printed in the back of our catalogues.

### Online Bidding (SummersPlace Live - no surcharge)

If you cannot attend the auction, you may wish to bid using the [saleroom.com](http://saleroom.com), which will incur an additional 5% of the hammer price plus VAT at the rate imposed or use our own platform **SummersPlace Live**



## Sealed bid

For further information please see pages at the end of this section.

## Sale by private treaty

Summers Place Auctions shall, from time to time, be offering some lots for sale by Private Treaty in our architectural portfolio. These will usually comprise larger pieces of an architectural nature, which will require a longer period of planning and consultation than an auction can provide. Additionally if you are looking for a specific piece please let us know and we will use our worldwide network of trade and private clients to help source the most suitable item for you. Please contact us for further information.

## Payment

Payment is due in sterling immediately after the sale and before purchases can be released. Payments in person can be made in the saleroom on the day of the auction using mobile banking or debitcards. Thereafter payments may also be made by electronic transfer to our bank, through stripe, by post or by debit card transactions by telephone. Cash will not be accepted.

## Sterling Banker's Draft or Building Society Cheque and Electronic or Wire Transfer

Wire transfers can be made directly to our bank. Please contact us for further details. Sterling Banker's Drafts and Building Society Cheques drawn on a recognised UK bank or building society are also accepted.

## Credit/Debit Card

We are pleased to accept all major personal debit cards. Regrettably we are no longer able to accept credit cards

## Collection and Storage

On receipt of cleared funds, lots can be collected from the Walled Garden, Stane Street, Billingshurst, West Sussex, RH14 9AB, Monday to Friday between 9.30am and 12.30pm and 2.00pm and 4.00pm. **Collection of lots is strictly by prior appointment and must be arranged at least 48 hours in advance.** If Lots have not been collected within 35 days of the auction date then storage charges may be applied at a rate of £10 per Lot per day. Buyers are reminded that liability for loss and damage transfers to the buyer from the fall of the hammer. Whilst the majority of lots will remain in their location until collected, Summers Place Auctions

accept no responsibility for any damage which may occur, even in the event of Summers Place Auction staff assisting carriers during collection.

Summers Place Auctions also reserves the right to charge storage fees of £10.00 per lot, per week, for any pieces left at Summers Place over a longer period than six months irrespective of whether they have been entered into a sale or not.

## Shipping

We are happy to arrange shipping quotations and have extensive experience in working in conjunction with leading domestic and international shippers. There is no charge for arranging quotations.

## CONDITIONS OF BUSINESS FOR BUYERS

### 1. INTRODUCTION

(a) The contractual relationship of Summers Place Auctions Ltd and Sellers with prospective Buyers is governed by:-

- (i) these Conditions of Business for Buyers;
- (ii) the Conditions of Business for Sellers displayed in the saleroom and available from Summers Place Auctions Ltd
- (iii) Summers Place Auctions Ltd 's Authenticity Guarantee; (iv) any additional notices and terms printed in the sale catalogue, in each case as amended by any saleroom notice or auctioneer's announcement.

(b) As auctioneer, Summers Place Auctions Ltd acts as agent for the Seller. Occasionally, Summers Place Auctions Ltd may own or have a financial interest in a lot.

### 2. DEFINITIONS

"Bidder" is any person making, attempting or considering making a bid, including Buyers;

“Buyer” is the person who makes the highest bid or offer accepted by the auctioneer, including a Buyer’s principal when bidding as agent;

“Seller” is the person offering a lot for sale, including their agent, or executors;

““Buyer’s Expenses” are any costs or expenses due to Summers Place Auctions Ltd from the Buyer;

“Buyer’s Premium” is the commission payable by the Buyer on the Hammer Price or winning sealed bid price at the rates set out in the Guide for Prospective Buyers;

“Hammer Price” is the highest bid for the Property accepted by the auctioneer at the auction or the post auction sale price; “Purchase Price” is the Hammer Price plus applicable Buyer’s Premium and Buyer’s Expenses;

“Reserve Price” (where applicable) is the minimum Hammer Price at which the Seller has agreed to sell a lot.

The Buyer’s Premium, Buyer’s Expenses and Hammer Price are subject to VAT, where applicable.

### 3. EXAMINATION OF LOTS

(a) Summers Place Auctions Ltd knowledge of lots is partly dependent on information provided by the Seller and Summers Place Auctions Ltd is unable to exercise exhaustive due diligence on each lot. Each lot is available for examination before sale. Bidders are responsible for carrying out examinations and research before sale to satisfy themselves over the condition of lots and accuracy of descriptions.

(b) All oral and/or written information provided to Bidders relating to lots, including descriptions in the catalogue, condition reports or elsewhere are statements of Summers Place Auctions Ltd opinion and not representations of fact. Estimates may not be relied on as a prediction of the selling price or value of the lot and may be revised from time to time at Summers Place Auctions Ltd absolute discretion.

4. EXCLUSIONS AND LIMITATIONS OF LIABILITY TO BUYERS (a) Summers Place Auctions Ltd shall refund the Purchase Price to the Buyer in circumstances where it deems that the lot is a Counterfeit, subject to the terms of Summers Place Auctions Ltd Authenticity Guarantee.

(b) Subject to Condition 4(a), neither Summers Place Auctions Ltd nor the Seller:-

(i) is liable for any errors or omissions in any oral or written information provided to Bidders by Summers Place Auctions Ltd, whether negligent or otherwise;

(ii) gives any guarantee or warranty to Bidders and any implied warranties and conditions are excluded (save in so far as such obligations cannot be excluded by English law), other than the express warranties given by the Seller to the Buyer (for which the Seller is solely responsible) under the Conditions of Business for Sellers;

(iii) accepts responsibility to Bidders for acts or omissions (whether negligent or otherwise) by Summers Place Auctions Ltd in connection with the conduct of auctions or for any matter relating to the sale of any lot.

(c) Without prejudice to Condition 4(b), any claim against Summers Place Auctions Ltd and/or the Seller by a Bidder is limited to the Purchase Price for the relevant lot. Neither Summers Place Auctions Ltd nor the Seller shall be liable for any indirect or consequential losses.

(d) Nothing in Condition 4 shall exclude or limit the liability of Summers Place Auctions Ltd or the Seller for death or personal injury caused by the negligent acts or omissions of Summers Place Auctions Ltd or the Seller.

### 5. BIDDING AT AUCTION

(a) Summers Place Auctions Ltd has absolute discretion to refuse admission to the auction. Before sale, Bidders must complete a Registration Form and supply such information and references as Summers Place Auctions Ltd requires. Bidders are personally liable for their bid and are jointly and severally liable with their principal, if bidding as agent (in which case Summers Place Auctions Ltd’s prior and express consent must be obtained).

(b) Summers Place Auctions Ltd advises Bidders to attend the auction, but Summers Place Auctions Ltd will endeavour to execute absentee written bids provided that they are, in Summers Place Auctions Ltd’s opinion, received in sufficient time and in legible form.

(c) When available, written and telephone bidding is offered as a free service at the Bidder’s risk and subject to Summers Place Auctions Ltd’s other commitments; Summers Place Auctions Ltd is therefore not liable for failure to execute such bids. Telephone bidding may be recorded.

## 6. IMPORT, EXPORT AND COPYRIGHT RESTRICTIONS

Summers Place Auctions Ltd and the Seller make no representations or warranties as to whether any lot is subject to import, export or copyright restrictions. It is the Buyer's sole responsibility to obtain any copyright clearance or any necessary import, export or other licence required by law, including licenses required by law under the International Trade in Endangered Species (CITES).

## 7. CONDUCT OF THE AUCTION

(a) The auctioneer has discretion to refuse bids, withdraw or re-offer lots for sale (including after the fall of the hammer) if (s)he believes that there may be an error or dispute, and may also take such other action as (s) he reasonably deems necessary. (b) The auctioneer will commence and advance the bidding in such increments as (s)he considers appropriate and is entitled to place bids on the Seller's behalf up to the Reserve Price for the lot, where applicable.

(c) Subject to Condition 7(a), the contract between the Buyer and the Seller is concluded on the striking of the auctioneer's hammer.

(d) Any post-auction sale of lots shall incorporate these Conditions of Business.

## 8. PAYMENT AND COLLECTION

(a) Unless otherwise agreed in advance, payment of the Purchase Price is due in pounds sterling immediately after the auction (the "Payment Date").

(b) Title in a lot will not pass to the Buyer until Summers Place Auctions Ltd has received the Purchase Price in cleared funds. Summers Place Auctions Ltd will not release a lot to a Buyer before payment.

(c) The refusal of any licence or permit required by law, as outlined in Condition 6, shall not affect the Buyer's obligation to pay for the lot, as per Condition 8(a).

(d) The Buyer must arrange collection of lots within 35 working days of the auction. Purchased lots are at the Buyer's risk from the fall of the hammer.

(e) All packing and handling of lots is at the Buyer's risk. Summers Place Auctions Ltd will not be liable for any acts or omissions of third party removers or shippers.

## 9. REMEDIES FOR NON-PAYMENT

Without prejudice to any rights that the Seller may have, if the Buyer without prior agreement fails to make payment for the lot within 5 working days of the auction, Summers Place Auctions Ltd may in its sole discretion exercise one or more of the following remedies:-

(a) store the lot at its premises or elsewhere at the Buyer's sole risk and expense;

(b) cancel the sale of the lot;

(c) set off any amounts owed to the Buyer by Summers Place Auctions Ltd against any amounts owed to Summers Place Auctions Ltd by the Buyer for the lot;

(d) reject future bids from the Buyer;

(e) charge interest at 4% per annum above NatWest Bank Base Rate from the

Payment Date to the date that the Purchase Price is received in cleared funds;

(f) re-sell the lot by auction or privately, with estimates and reserves at Summers Place Auction Ltd.'s discretion, in which case the Buyer will be liable for any shortfall between the original Purchase Price and the amount achieved on re-sale, including all costs incurred in such re-sale;

(g) Exercise a lien over any Buyer's Property in Summers Place Auctions Ltd's possession, applying the sale proceeds to any amounts owed by the Buyer to Summers Place Auctions Ltd. Summers Place Auctions Ltd shall give the Buyer 14 days written notice before exercising such lien;

(h) commence legal proceedings to recover the Purchase Price for the lot, plus interest and legal costs;

(i) disclose the Buyer's details to the Seller to enable the Seller to commence legal proceedings.

## 10. FAILURE TO COLLECT PURCHASES

(a) If the Buyer pays the Purchase Price but does not collect the lot within 35 days of the auction, the lot will be stored at the Buyer's expense and risk at Summers Place Auctions Ltd's premises or in independent storage.



(b) If a lot is paid for but uncollected within 6 months of the auction, following 60 days written notice to the Buyer, Summers Place Auctions Ltd will re-sell the lot by auction or privately, with estimates and reserves at Summers Place Auctions Ltd's discretion. The sale proceeds, less all Summers Place Auctions Ltd's costs, will be forfeited unless collected by the Buyer within 2 years of the original auction.

#### 11. DATA PROTECTION

(a) Summers Place Auctions Ltd will use information supplied by Bidders or otherwise obtained lawfully by Summers Place Auctions Ltd for the provision of auction related services, client administration, marketing and as otherwise required by law.

(b) By agreeing to these Conditions of Business, the Bidder agrees to the processing of their personal information and to the disclosure of such information to third parties world-wide for the purposes outlined in Condition 11(a) and to Sellers as per Condition 9(i).

#### 12. MISCELLANEOUS

(a) All images of lots, catalogue descriptions and all other materials produced by Summers Place Auctions Ltd are the copyright of Summers Place Auctions Ltd.

(b) These Conditions of Business are not assignable by any Buyer without Summers Place Auctions Ltd's prior written consent, but are binding on Bidders' successors, assigns and representatives.

(c) The materials listed in Condition 1(a) set out the entire agreement between the parties.

(d) If any part of these Conditions of Business be held unenforceable, the remaining parts shall remain in full force and effect.

(e) These Conditions of Business shall be interpreted in accordance with English Law, under the exclusive jurisdiction of the English Courts, in favour of Summers Place Auctions Ltd.

## GLOSSARY OF TERMS

The following are examples of the terminology used in this catalogue. Any statement as to authorship, attribution, origin, date, age provenance and condition is a statement of opinion and is not to be taken as a statement of fact.

Please read carefully the terms of the Authenticity Guarantee and the Conditions of Business for Buyers set out in this catalogue.

#### *Antonio Canova*

In our opinion a work by the artist. In the case of 19th century sculpture this indicates that the work was made in our opinion either by the artist or by a foundry or editor who had the rights to reproduce the artist's original model either during the artist's lifetime or for a defined posthumous period. (When the artist's forenames are not known, a series of asterisks, followed by the surname of the artist, whether preceded by an initial or not indicates that in our opinion the work is by the artist named).

#### *Attributed to Antonio Canova*

In our opinion probably a work by the artist but less certainty as to authorship is expressed than in the preceding category.

#### *Manner of Antonio Canova*

In our opinion a work in the style of the artist and of a later date

#### *After Antonio Canova*

In our opinion a copy at a later date of a known work by the artist. In the 19th century this indicates that in our opinion the work was made by a foundry or editor at a later date and apparently without exclusive rights.

#### *Italian 18th century*

In our opinion a work from that region and of that date.

#### *Probably Italian 18th century*

In our opinion a work that is likely to be from that region and/or of that date but less certainty as to the region and/or date than is expressed in the preceding category.

#### *In renaissance style*

In our opinion a work executed in the style of the renaissance but not necessarily of that period.

The term signed and/or dated and/or inscribed means that in our opinion the signature and/or date and/or inscription are original to the model or authorized by the sculptor's studio or editor but not necessarily from the hand of the artist.

The term bearing the signature and/or date and/or inscription means that in our opinion the signature and/or date and/or inscription have been added at a later date.

Dimensions are given height before width

#### *Condition of lots*

Condition is only noted in the catalogue where an item is severely distressed. Prospective purchasers making commission bids without viewing the sale can be given condition reports on any lot on request.

It is essential for buyers to satisfy themselves as to the condition of lots prior to the sale and to arrange their own insurance cover against loss and damage immediately after the sale. Please refer to the Conditions of Business for Buyers.

**Sealed bid- How it works** Our sealed bid auctions close at 4.00pm on the day after the live auction, but are on view at the same time and are included in the same catalogue with an illustration, description and estimate. Clients wishing to leave bids should do so in writing or by emailing a signed scanned page detailing lot numbers, brief description and the bid(s) which they wish to leave. All clients should also have registered with us beforehand and provided photographic identification.

Sealed bids, when placed by telephone, are accepted only at the caller's risk and must be confirmed by letter or e-mail to [info@summersplaceauctions.com](mailto:info@summersplaceauctions.com). You can also e-mail the completed sealed bid form to [sealedbids@summersplaceauctions.com](mailto:sealedbids@summersplaceauctions.com)

Next give us your bid(s). This can be done by filling in the bidding slip found in your catalogue. If you are sending your bidding slip to Summers Place Auctions by post, please mark the envelope "Sealed Bid" so that we know it contains a sealed bid and do not open it accidentally. Bids and IDs may also be sent by e-mail. If you choose to send the bid electronically please email [sealedbids@summersplaceauctions.com](mailto:sealedbids@summersplaceauctions.com). This is a closed mailbox and will not be opened before the advertised time. However, we strongly recommend that if you have not viewed the sale in person, that you ask for condition reports on any lots you are thinking of leaving bids on.

Sealed bid auctions differ from established auctions in that the bid left is the bid that will be exercised in full. Therefore, if you decide to leave a bid of, say, £900 on the lot estimated at £800-1000 and there is no higher bid (where two identical bids are received, the earliest received bid will take precedence), £900 will secure the lot subject to buyer's premium and VAT on the premium.

We will contact you if you have been the successful bidder to inform you of the lot or lots that you have purchased, so that you can make payment and make arrangements for delivery. We have had many years of experience dealing with both UK carriers and international shippers and are happy to obtain quotations and facilitate transport and shipping of single lots and multiple purchases to anywhere in the world.

Bids will be opened on the Thursday following the sale; and sales results will appear on the Summers Place Auctions website. Please be mindful that we will have to process a large number of bids, which does take time. However, we will endeavour to get this accomplished as quickly as possible and will expect to have the results of the sale posted by the end of the day.

If you have never bid in a sealed bid sale before, here are some things to be aware of as regards leaving bids for this auction:

Every lot in the sale has a fixed reserve, (the minimum price for which the lot can be sold) and this is never above the low estimate, it can be slightly below, but in the vast majority of cases it is the low estimate.

The highest bid (as long as it is on or above the reserve) will be the winning bid. This is the 'hammer price' that the lot will be sold for.

You should consider leaving a bid of an odd amount in pounds, for example, rather than bidding £1,000, try say £1,004, as many lots have been bought for the sake of the odd £1!

You can tailor your bid in ways that are impossible to do in a live auction. For example, if you really like three lots, but only need one, and the piece you like the most is later in the sale, simply mark your order of preference. As long as your instructions are clear, having looked at any other bids left on the lots, we will do our best to comply with your preferences.

In the event of two identically highest bids, the earliest bid received will take precedence.

An auction price is made up of different components; the winning bid is called the 'hammer price'; A commission, which is in addition to the 'hammer price' is payable to the auctioneers. This is known as the buyers premium, on which VAT is payable. Lots marked with ▲ are subject to Artist Resale Right (ARR), which is 4% of the "hammer price". All lots that have additional VAT are clearly marked in the catalogue with a †.



# Summers Place Auctions Ltd

SALE NUMBER  
280323

SALE DATE  
28 MARCH 2023

## IMPORTANT

Please note that the execution of written and telephone bids is offered as an additional service for no extra charge, and at the bidder's risk. It is undertaken subject to our other commitments at the time of the auction. We therefore cannot accept liability for failure to place such bids, whether through negligence or otherwise.

## NEW CLIENTS

Please note that we may contact you to Request a band reference. In addition we Will require sight of a government issued ID and proof of address prior to collection of purchases.

## FOR WRITTEN/FIXED BIDS

Bids will be executed for the lowest price as is permitted by other bids or reserve.  
"Buy" or unlimited bids will not be accepted and we do not accept "plus one" bids. Please place bids in the same order as in the catalogue. Alternative bids can be placed by using the word "or" between lot numbers.

Where appropriate your written bids will be rounded down to the nearest amount consistent with the auctioneers bidding increments.

## FOR TELEPHONE BIDS

Please clearly specify the telephone number or back up mobile phone number on which you may be reached at the time of the sale, including the country code. We will call you from the saleroom shortly before your lot is offered. Telephone bids are operated on a first come first served basis as lines are limited.

Title \_\_\_\_\_  
First name \_\_\_\_\_ Last name \_\_\_\_\_  
Address \_\_\_\_\_  
\_\_\_\_\_  
Postcode \_\_\_\_\_  
Tel \_\_\_\_\_ Mobile \_\_\_\_\_  
Email \_\_\_\_\_ Fax \_\_\_\_\_

Please write clearly and place your bids as early as possible, as in the event of identical bids, the earliest bid received will take precedence. Bids should be submitted in (£) sterling at least 24 hours before the auction.

## LIVE AUCTION BIDDING FORM

Lot No.	Lot Description	Maximum Sterling price (excluding premium & VAT)

## TELEPHONE NUMBER DURING THE SALE (tel. bids only)

I agree to be bound by Summers Place Auctions Ltd "Condition of Business" as published in the catalogue which govern all purchases at auction, and to pay the published Buyer's Premium on the hammer price plus any applicable taxes.

I consent to the use of this information and any other information obtained by Summers Place Auctions.

I am aware that all telephone bid lines may be recorded.

Payment is due immediately after the sale in pounds sterling. Full details on how to pay are included in our Guide for Buyers. If you wish to pay for your purchases by card please complete the details below any your Card will be charged.

NAME ON CARD. ....  
DEBIT CARD NUMBER. ....  
EXPIRY DATE. ....  
ISSUE NUMBER (SWITCH ONLY). .... 3 LAST DIGITS OF SECURITY CODE. ....

Signed \_\_\_\_\_ Dated \_\_\_\_\_

Please send this form by post to Summers Place Auctions Ltd, The Walled Garden, Stane Street, Billingshurst, West Sussex RH14 9AB



## GUIDE FOR ABSENTEE BIDDERS

If you are unable to attend an auction in person, you may give Summers Place Auctions Bid Department instructions to bid on your behalf by completing the form overleaf.

This service is free and confidential.

Please record accurately the lot numbers, descriptions and the top hammer price you are willing to pay for each lot.

We will try to purchase the lot(s) of your choice for the lowest price possible and never for more than the top amount you indicate.

“Buy” or unlimited bids will not be accepted.

Alternative bids can be placed by using the word “OR” between lot numbers.

Bids must be placed in the same order as in the catalogue.

This form should be used for one sale only - please indicate the sale number, title and date on the form.

Please place your bids as early as possible, as in the event of identical bids the earliest received will take precedence. Wherever possible bids should be submitted at least twenty-four hours before the auction.

Where appropriate, your bids will be rounded down to the nearest amount consistent with the auctioneer's bidding increments.

Absentee bids, when placed by telephone, are accepted only at the caller's risk and must be confirmed by letter or fax to the Bid Department on +44 (0)1403 331 340.

Please note that the execution of written bids is offered as an additional service for no extra charge at the bidder's risk and is undertaken subject to Summers Place Auctions other commitments at the time of the auction; Summers Place Auctions

therefore cannot accept liability for failure to place such bids, whether through negligence or otherwise.

Successful bidders will receive an invoice detailing their purchases and giving instructions for payment and clearance of goods.

All bids are subject to the conditions of business applicable to the sale, a copy of which is available from Summers Place Auctions. Conditions of Business particularly relevant to buyers are also set out in the sale catalogue.

We reserve the right to seek identification of the source of funds received.

In connection with the management and operation of our business and the marketing and supply of Summers Place Auctions Companies' services, or as required by law, we may ask clients to provide personal information about themselves or obtain information about clients from third parties (e.g. credit information). If clients provide Summers Place Auctions with information that is defined by law as "sensitive", they agree that Summers Place Auctions may use it for the above purposes. Summers Place Auctions will not use or process sensitive information for any other purpose without the client's express consent.

In order to fulfil the services clients have requested, Summers Place Auctions may disclose information to third parties (e.g. shippers). Some countries do not offer equivalent legal protection of personal information to that offered within the EU. It is Summers Place Auctions policy to require that any such third parties respect the privacy and confidentiality of our clients' information and provide the same level of protection for clients' information as provided within the EU, whether or not they are located in a country that offers equivalent legal protection of personal information.

By signing this Absentee Bid Form you agree to such disclosure. Clients will please note that for security purposes, Summers Place Auctions premises are subject to video recording. Telephone calls e.g. telephone bidding/voicemail messages may also be recorded.

Please mail or email up to  
27th March 2023  
The Walled Garden, Summers Place,  
Billingshurst, West Sussex, RH14 9AB.

For Bids only:  
Tel. +44 (0)1403 331 331

Online bidding via SummersPlace Live - register through [www.summersplaceauctions.com](http://www.summersplaceauctions.com)  
No surcharge (*normal BP and VAT apply*)



# Summers Place Auctions Ltd

SALE NUMBER  
SB290323

BIDS MUST BE RECEIVED BY  
29th March, 2023, 4PM BST

**IMPORTANT**

The winning bid will be the highest left on each lot above the reserve. Bids are non sequential and the highest bid left is the price at which the lot is sold plus buyers premium and any VAT liable. In the event of two identical winning bids being left on the same lot, the earliest received bid shall take precedence. Summers Place Auctions decision on which is the winning bid shall be final.

Clients wishing to bid on an “either or” basis should list the lots they are interested in with the price they are prepared to pay in order of preference with “OR” written between each one.

**NEW CLIENTS**

Please note that we may contact you to Request a band reference. In addition we Will require sight of a government issued ID and proof of address prior to collection of purchases.

Title \_\_\_\_\_

First name \_\_\_\_\_ Last name \_\_\_\_\_

Address \_\_\_\_\_

\_\_\_\_\_ Postcode \_\_\_\_\_

Tel \_\_\_\_\_ Mobile \_\_\_\_\_

Email \_\_\_\_\_ Fax \_\_\_\_\_

Please write clearly and place your bids as early as possible, as in the event of identical bids, the earliest bid received will take precedence. Bids should be submitted in (£) sterling at least 24 hours before the auction.

## SEALED BIDDING FORM

Lot No.	Lot Description	Maximum Sterling price (excluding premium & VAT)

**I agree to be bound by Summers Place Auctions Ltd “Condition of Business” as published in the catalogue which govern all purchases at auction, and to pay the published Buyer’s Premium on the hammer price plus any applicable taxes.**

I consent to the use of this information and any other information obtained by Summers Place Auctions.

I am aware that all telephone bid lines may be recorded.

Payment is due immediately after the sale in pounds sterling. Full details on how to pay are included in our Guide for Buyers. If you wish to pay for your purchases by card please complete the details below any your Card will be charged.

NAME ON CARD. ....

DEBIT CARD NUMBER. ....

EXPIRY DATE. ....

ISSUE NUMBER (SWITCH ONLY). ..... 3 LAST DIGITS OF SECURITY CODE. ....

Signed \_\_\_\_\_

Dated \_\_\_\_\_

## GUIDE FOR ABSENTEE BIDDERS FOR SEALED BID AUCTION

### SEALED BID AUCTION LOTS 100-496

All sealed bids must be with us, at the latest, by 30th March 4.00pm BST since the bids will be opened on the 31st March. The winning bid will be the highest left on each lot above the reserve. Bids are non sequential and the highest bid left is the price at which the lot is sold plus buyers premium and any VAT liable. In the event of two identical winning bids being left on the same lot, the earliest received bid shall take precedence. Summers Place Auctions decision on which is the winning bid shall be final. Winning bidders will be invoiced after the bids are opened.

Sealed bids, when placed by telephone, are accepted only at the caller's risk and must be confirmed by letter or e-mail to the Bid Department.

Successful bidders will receive an invoice detailing their purchases and giving instructions for payment and clearance of goods.

All bids are subject to the conditions of business applicable to the sale, a copy of which is available from Summers Place Auctions. Conditions of Business particularly relevant to buyers are also set out in the sale catalogue.

We reserve the right to seek identification of the source of funds received.

In connection with the management and operation of our business and the marketing and supply of Summers Place Auctions Companies' services, or as required by law, we may ask clients to provide personal information about themselves or obtain information about clients from third parties (e.g. credit information). If clients provide Summers Place Auctions with information that is defined by law as "sensitive", they agree that Summers

Place Auctions may use it for the above purposes. Summers Place Auctions will not use or process sensitive information for any other purpose without the client's express consent.

In order to fulfil the services clients have requested, Summers Place Auctions may disclose information to third parties (e.g. shippers). Some countries do not offer equivalent legal protection of personal information to that offered within the EU. It is Summers Place Auctions policy to require that any such third parties respect the privacy and confidentiality of our clients' information and provide the same level of protection for clients' information as provided within the EU, whether or not they are located in a country that offers equivalent legal protection of personal information. By signing this Sealed Bid Form you agree to such disclosure. Clients will please note that for security purposes, Summers Place Auctions premises are subject to video recording. Telephone calls e.g. telephone bidding/voicemail messages may also be recorded.

Please mail or email up to  
29th MAR 2023 4.00pm BST  
The Walled Garden, Summers Place,  
Billingshurst, West Sussex, RH14 9AB.

For Bids only:  
Tel. +44 (0)1403 331 331

Email  
sealedbids@summersplaceauctions.com

Online bidding via SummersPlace Live - register through [www.summersplaceauctions.com](http://www.summersplaceauctions.com)  
No surcharge (*normal BP and VAT apply*)



### Sealed Bid Auction Lots 100-496

All sealed bids must be with us, at the latest by 4pm GMT on the 29th March since the bids will be opened on the 30th March. The winning bid will be the highest left on each lot above the reserve. Bids are non sequential and the highest bid left is the price at which the lot is sold plus buyers premium and any VAT liable. In the event of two identical winning bids being left on the same lot, the earliest received bid shall take precedence. Summers Place Auctions decision on which is the winning bid shall be final. Winning bidders will be invoiced after the bids are opened. For further information on sealed bids and how they work see our conditions of business.

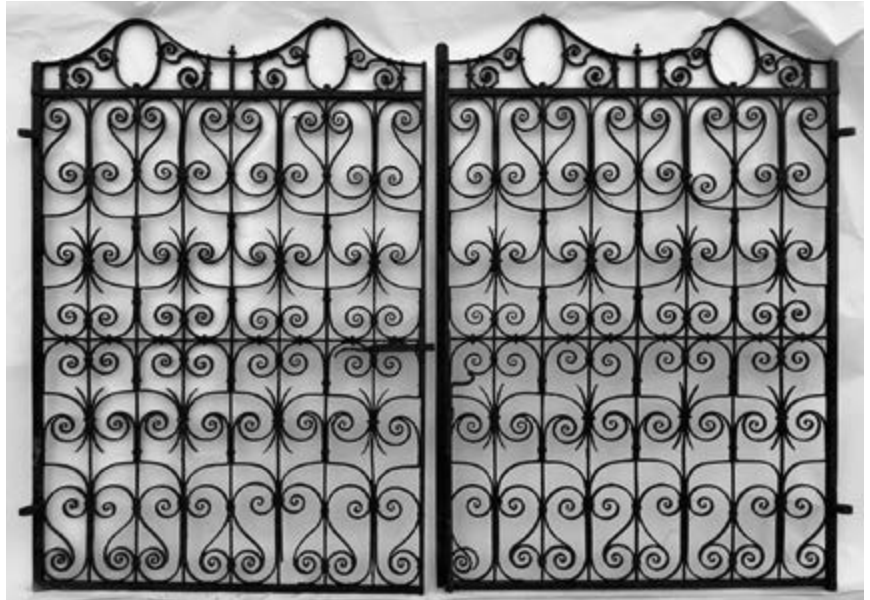
100

**A pair of wrought iron gates**

early 20th century

235cm high by 308cm wide

£1,500-2,500



101

**A wrought iron estate gate**

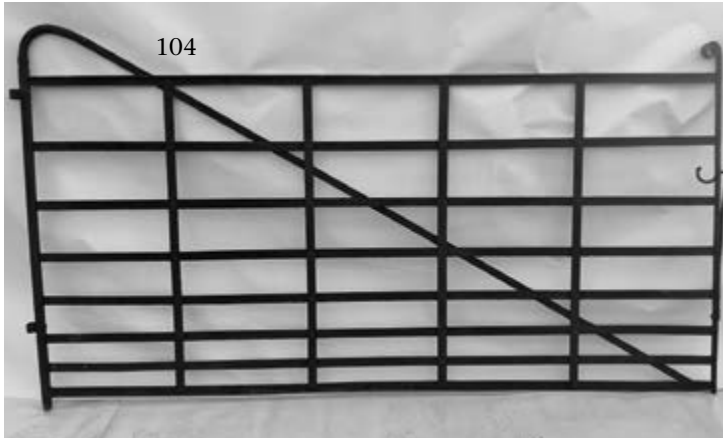
second half 19th century

150cm high by 264cm long

£300-500



For details of our buyers premium which is added onto the hammer price together with any other applicable charges please refer to our guide for prospective buyers



102

**A wrought iron estate gate**

second half 19th century  
152cm high by 375cm long

£500-800

103

**A wrought iron estate pedestrian gate**

second half 19th century  
121cm high by 122cm wide

£150-250

104

**A wrought iron estate gate**

circa 1900  
158cm high by 300cm long

£300-500

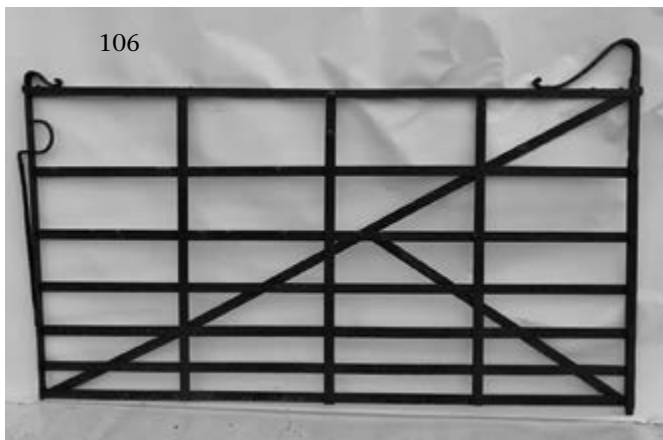
105

**A wrought iron estate gate**

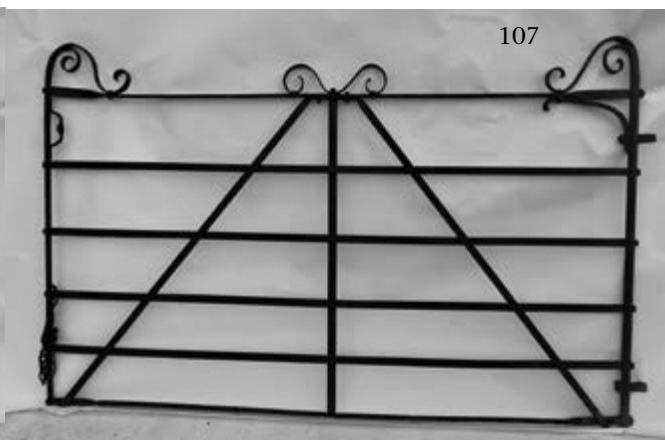
second half 19th century  
157cm high by 260cm long

£500-800

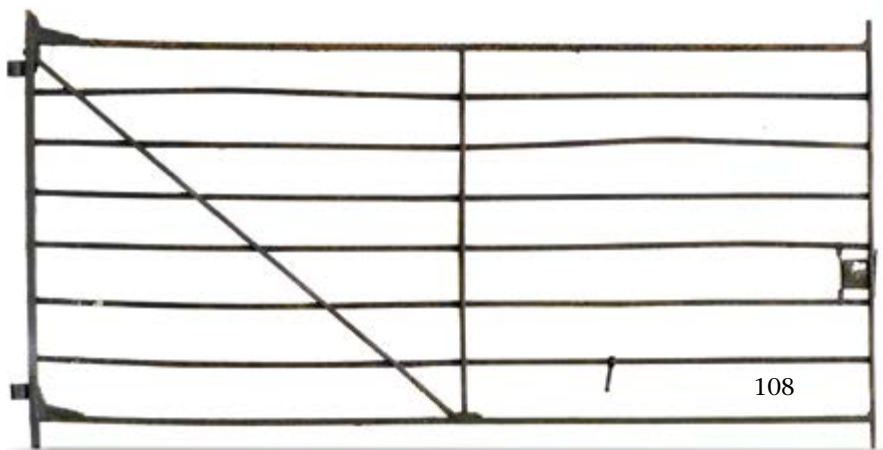
Online bidding via SummersPlace Live - register through [www.summersplaceauctions.com](http://www.summersplaceauctions.com)  
No surcharge (normal BP and VAT apply)



106  
**A wrought iron estate gate**  
 second half 19th century  
 142cm high by 228cm wide  
 £300-500



107  
**A wrought iron estate gate**  
 second half 19th century  
 156cm high by 264cm long  
 £400-600



108  
**A wrought iron estate gate**  
 19th century  
 146cm high by 270cm long  
 £200-400

109  
**A pair of Victorian cast iron gates**  
 circa 1860  
 140cm high by 150cm wide  
 £200-400



For details of our buyers premium which is added onto the hammer price together with any other applicable charges please refer to our guide for prospective buyers





**110**  
**An impressive pair of**  
**Victorian cast iron gates**

circa 1900  
 300cm high by 326cm  
 wide  
 with iron running rails

See further details on our  
 website

£6,000-8,000

**111**  
**A pair of steel gates**

20th century  
 240cm high by 364cm  
 wide

£1,200-1,800



111

Online bidding via SummersPlace Live - register through [www.summersplaceauctions.com](http://www.summersplaceauctions.com)  
 No surcharge (*normal BP and VAT apply*)

112

**An imposing wrought iron and stone entranceway**

early 20th century

The gates 264 cms high by 350 cm wide

flanked by stone gate piers 250cm high by 54cm square

surmounted by lead adam style finials 70 cms high

The gates may be viewed at Summers Place Auctions.

The piers and lead finials are still in situ and may be viewed by appointment near Market Harborough, Leicestershire. Please see our website for further images

£4,000-6,000



113

**A pair of wrought iron gates**

early 20th century

161cm high by 280cm wide

£500-800



For details of our buyers premium which is added onto the hammer price together with any other applicable charges please refer to our guide for prospective buyers





120  
**A pair of large  
composition stone balls**

46cm diameter

£500-800

121  
**A pair of large  
composition stone balls**

46cm diameter

£500-800

122  
**A pair of large  
composition stone balls**

46cm diameter

£500-800

114  
**A pair of large  
composition stone balls**

46cm diameter

£500-800

116  
**A pair of large  
composition stone balls**

46cm diameter

£500-800

118  
**A pair of large  
composition stone balls**

46cm diameter

£500-800

123  
**A pair of large  
composition stone balls**

46cm diameter

£500-800

115  
**A pair of large  
composition stone balls**

46cm diameter

£500-800

117  
**A pair of large  
composition stone balls**

46cm diameter

£500-800

119  
**A pair of large  
composition stone balls**

46cm diameter

£500-800





**124  
Two pairs of wrought  
iron gates**

125cm high by 266cm  
wide  
together with **another  
pair of wrought iron  
gates**  
first half 20th century  
117cm high by 266cm  
wide overall

£80-120

**125  
A quantity of ironwork**

including three wrought  
iron candle stands, a pair  
of Victorian cast iron  
rosettes, a pair of zinc roof  
mansards, a cast iron roof  
finial, a rococo style cast  
iron grille, two balustrade  
sections, four sheet metal  
frieze sections, a pair of  
cast iron urn bases, two  
drills and an enamelled  
cast iron basin

£150-250

**126  
A wrought iron lunette**

19th century  
86cm high by 172cm  
long

£100-200

**127  
A set of four  
aluminium standing  
lamps**

late 20th century  
255cm high

£600-800



For details of our buyers premium which is added onto the hammer price together with any other applicable charges please refer to our guide for prospective buyers



128  
**A Georgian style brick  
kennel**

20th century, with slate  
roof and fitted interior  
400cm high (max) by  
300cm deep by 360cm  
wide

This lot is being sold in  
situ and can be viewed  
by appointment near  
Market Harborough,  
Leicestershire. It is the  
buyers responsibility to  
dismantle and remove it.

See our website for further  
images

£500-800

Online bidding via SummersPlace Live - register through [www.summersplaceauctions.com](http://www.summersplaceauctions.com)  
No surcharge (*normal BP and VAT apply*)





129

**A wooden gazebo with thatched roof**

late 20th century, fitted with benches and central table  
3.65 metres diameter, together with iron railings

This lot is being sold in situ and can be viewed by appointment near Market Harborough, Leicestershire. It is the buyers responsibility to dismantle and remove it. Please see our website for more pictures

£500-800

For details of our buyers premium which is added onto the hammer price together with any other applicable charges please refer to our guide for prospective buyers





**130**  
**A pair of painted aluminium  
 standing lamps**

late 20th century  
 300cm high

£1,000-1,500



**131**  
**An unusual wrought iron and  
 stained glass chandelier**

circa 1900  
 with inset panels  
 230cm high by 90cm wide

£1,200-1,800



**132**  
**A gilt brass lantern**

early 20th century  
 with cut glass panels  
 100cm high by 40cm wide

£500-800

Online bidding via SummersPlace Live - register through [www.summersplaceauctions.com](http://www.summersplaceauctions.com)  
 No surcharge (*normal BP and VAT apply*)



133  
**Two pairs of impressive  
 brass/bronze wall  
 lanterns with cast iron  
 brackets**

Italian  
 late 19th century  
 124cm high

£1,500-2,500



134  
**A pair of silvered brass  
 and bronzed iron lan-  
 terns**

124cm high

£1,500-2,500

For details of our buyers premium which is added onto the hammer price together with any other applicable charges please refer to our guide for prospective buyers



135  
A substantial part gilded sheet metal hanging lantern

Italian  
19th century  
164cm high by 88cm wide with rare cast and wrought iron hanging chain  
110cm long

£4,000-6,000



136  
A gilt bronze hexagonal lantern

early 20th century  
with bevelled glass panels  
76cm high

£800-1,200



137  
A G.E.C Industrial Flame Proof Tripod Light

1940s

with GEC makers stamp  
with extendable legs up to 240cm high overall

See further information on our website

£1,200-1,800

Online bidding via SummersPlace Live - register through [www.summersplaceauctions.com](http://www.summersplaceauctions.com)  
No surcharge (*normal BP and VAT apply*)





138  
**A stained glass arched panel**

circa 1900  
68cm high by 72cm wide

£100-150



139  
**A pair of leaded stained glass panels**

of figures in Japanese dress  
early 20th century  
in wooden frames

157cm high by 47cm wide  
the glass 134cm high by 33cm wide

£400-600



140  
**A stained glass entranceway comprising pair doors and two side panels**

circa 1900  
205cm high  
each door 63cm wide  
each side panel 44cm wide  
(only 1 showing)

£1,500-2,500

141  
**A pair of elm wood doors with inset leaded stained glass panels**

20th century  
198cm high by 114cm wide

£100-200



For details of our buyers premium which is added onto the hammer price together with any other applicable charges please refer to our guide for prospective buyers



142  
**A carved white marble  
papal coat of arms  
plaque**

circa 1900  
80cm high by 60cm wide

£250-400



143  
**A carved white marble  
papal coat of arms  
plaque**

circa 1900  
80cm high by 60cm wide

£250-400



144  
**A painted zinc  
architectural vent finial**

early 20th century  
165cm high by 56cm  
square

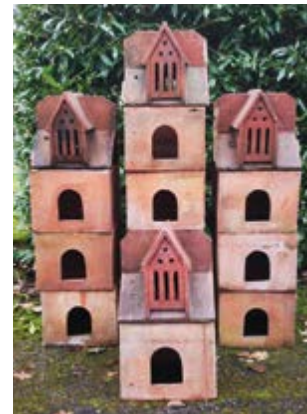
£500-800

145  
**A Victorian terracotta  
frieze**

late 19th century  
together with a pair of  
terracotta bases  
33cm high by 110cm long  
and a pair of terracotta  
plinths  
56cm by 46cm

Please see our website for  
further images

£200-400



146  
**Eleven terracotta  
dovecote apertures**

circa 1900  
together with four  
terracotta roof terminals  
each square section 24cm  
high

A similar collection  
of terracotta dovecote  
components were included  
in Christies South  
Kensington sale of the  
Collection of Will Fisher  
of Jamb, 2nd February  
2012 lot 371

£150-250



145



147  
**A pair of Art Deco carved  
Portland stone plaques**

circa 1920  
45cm high by 46cm wide  
by 23cm deep

£700-1,000

148  
**A pair of Art Deco carved  
Portland stone plaques**

circa 1920  
45cm high by 46cm wide  
by 23cm deep

£700-1,000

149  
**A pair of Art Deco carved  
Portland stone plaques**

circa 1920  
45cm high by 46cm wide  
by 23cm deep

£700-1,000



150  
**A Victorian painted pine  
clock turret**

late 19th century  
one side mounted with a  
painted tin dial and sur-  
mounted with a weather  
vane base

300cm high by 125cm  
square

£600-1,000

For details of our buyers premium which is added onto the hammer price together with any other applicable charges please refer to our guide for prospective buyers





at Lawnswood Cemetery in Leeds. The monument is recognised by Historic England with a Grade II listing.

£2,000-4,000

152  
A similar terracotta plaque

signed EC Spruce  
68cm high by 295cm long

£2,000-4,000



151  
**Edward Caldwell Spruce**  
**Hope**

**A terracotta plaque decorated with figures in high relief, flanking an armorial shield**

signed E C Spruce Sculpt  
68cm high by 295cm long

Edward Caldwell Spruce (1865 – 1922) was an English sculptor and artist who mainly worked in Leeds

Spruce was born in Knutsford, Cheshire

Between 1891 and 1893 he was a student at the Leeds College of Art where he also taught clay modelling.

Spruce first worked at a local tile factory before moving to Burmantofts Pottery in Leeds, where he was principal modeller. His work there includes some fine panels on the Midland Hotel, Manchester. He went to Paris to study art and returned to Leeds to set up as a freelance artist with a studio in Chapeltown, Leeds In

this he was successful, performing numerous portrait commissions of contemporary figures including a bust of the Lord Mayor of Leeds, Sir James Kitson. Between 1906 and 1915 he exhibited at least four works at the Royal Academy in London. He also created the panels for the war memorial at Bailiff Bridge in West Yorkshire. Possibly Spruce's best known work is the 1918 large multi-figure memorial to the Leeds businessman Sam Wilson

Online bidding via SummersPlace Live - register through [www.summersplaceauctions.com](http://www.summersplaceauctions.com)  
No surcharge (*normal BP and VAT apply*)



153  
**An unusual wrought and cast iron boot scraper**

19th century  
100cm high

£150-250

154  
**A Victorian cast iron weather vane together with a collection of gardenalia**

£100-150



154



154

155  
**A Victorian cast iron boot scraper**

circa 1860  
on sandstone base  
50cm wide

£100-200

156  
**A Victorian cast iron boot scraper**

mid 19th century  
on sandstone base  
38cm wide

£100-200

157  
**A Victorian cast iron boot scraper**

mid 19th century  
on sandstone base  
32cm high by 48cm wide

£100-150

158  
**Two cast iron lion doorstops**

19th century  
one stamped ●●● directs by  
John Crowley and Co,  
Sheffield Dec 1847  
36cm high by 72cm long

£150-250

For further information  
see our website

159  
**A pair of lion and unicorn boot scrapers**

20th century  
41cm high by 60cm long

£100-200



155



156



157



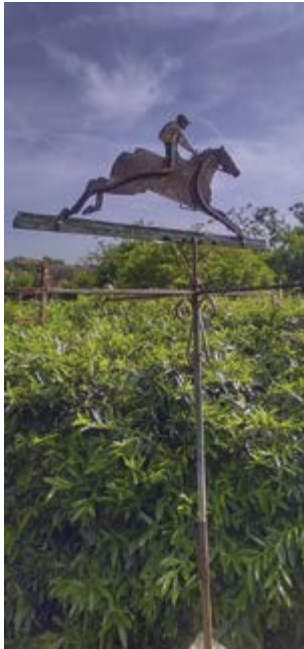
158



159

For details of our buyers premium which is added onto the hammer price together with any other applicable charges please refer to our guide for prospective buyers





160  
**A wrought iron weathervane**

late 19th century  
146cm wide

£500-700



161  
**A cast and wrought iron weather vane**

made up and incorporating 19th century elements  
97cm high

£150-250



162  
**A wrought iron and copper weathervane**

early 20th century  
294cm high by 91cm wide

£300-500



164  
**A single wrought iron treillage obelisk**

modern  
254cm high  
together with an iron armillary  
100cm high

£100-200



163  
**A pair of cast iron and oak signal cannons**

20th century  
56cm long

£200-400

Online bidding via SummersPlace Live - register through [www.summersplaceauctions.com](http://www.summersplaceauctions.com)  
No surcharge (*normal BP and VAT apply*)





165

**A quantity of approximately 25 metres of cast iron railing**

early 20th century  
stamped Carter Aynsley, London  
155cm high

together with six **uprights**, 224cm high by 48cm square, **one double gate**, 132cm wide and **one single gate**, 89cm wide

Carter & Aynsley are recorded in a 1914 Trade directory as brass founders operating in Bishopsgate and Middlesex Street

£8000-12,000



For details of our buyers premium which is added onto the hammer price together with any other applicable charges please refer to our guide for prospective buyers



168  
**A harlequin set of three substantial Cotswold stone saddle stones**

one with later composition stone top  
average height 74cm high

£1,000-1,500



169  
**A cast iron boot scraper**

late 19th century  
fitted with brushes,  
60cm long  
together with a  
**composition stone pig**  
and a composition stone  
**Buddha**

£200-400



166  
**A composition stone Green Man plaque**

late 20th century  
58cm square

£80-120

170  
**A set of four Victorian carved sandstone finials**

2nd half 19th century  
56cm high

£100-200

167  
**Two carved limestone rams head corbels**

early 20th century  
the larger 31cm high by  
55cm long by 24cm wide

£200-400



171

**A rare Lavochkin V-751 experimental flying laboratory**

1960

titanium, stainless steel and aluminium  
10.9 metres long

This is a two stage rocket with an initial solid fuel rocket booster which burned for four seconds and a second stage liquid fuel engine that burnt for a further 22 seconds. This enabled the craft to reach altitudes of 66,000 feet and speeds of Mach 3, the range could be up to 22 miles. This rocket is part of the S-75 family of rockets which were developed in the late 1950's in response to combat America's long range bombers. The S-75 and its many variants provided much of the air defence of the Soviet Union and numerous other countries which adopted it. Perhaps its most famous moment was the shooting down of Gary Powers U-2 spy plane in 1960.

£2,500-4,000

172

**A rare Lavochkin V-751 experimental flying laboratory**

1960

titanium, stainless steel and aluminium  
10.9 metres long

£2,500-4,000



For details of our buyers premium which is added onto the hammer price together with any other applicable charges please refer to our guide for prospective buyers





173

An historic painted pine trunk owned by Sir Cecil Spring Rice the top stencilled Sir C. Spring Rice, British Embassy, Washington, USA containing a quantity of photographs and material relating to the Spring Rice and Arthur families

74cm high by 100cm long by 66cm deep

£800-1,200

See our website for footnote

174

A pair of carved teakwood Nagas

Burmese  
mid 20th century  
222cm high overall

£800-1,200

175

A pair of red granite column pedestals

19th century  
with white marble caps and bases  
112cm high by 46cm diameter (top)

£800-1,200

176

A pair of large carved limestone gate pier balls

19th century  
105cm high by 57cm square

£700-1,000



Online bidding via SummersPlace Live - register through [www.summersplaceauctions.com](http://www.summersplaceauctions.com)  
No surcharge (normal BP and VAT apply)

177

A pair of early 20th century painted and re-gilt glass Royal Warrant signs

each 114cm high by 138cm wide

£1,500-2,500

178

A painted and gilt sign

64cm high by 185cm wide

£500-800

179

A painted and gilt sign

64cm high by 185cm wide

£500-800



For details of our buyers premium which is added onto the hammer price together with any other applicable charges please refer to our guide for prospective buyers



180



182



181



183



184

180  
**A painted composition  
stone bird cage**

French  
mid 20th century  
195cm high French

£300-500

181  
**A cast iron collection box**

late 19th century  
94cm high

£150-250

182  
**An unusual carved stone  
base**

possibly a boundary  
marker  
dated 1843  
now mounted with later  
lead arrow  
160cm high overall

Provenance: removed from  
Tugg Hall Grange, near  
Alnwick, Northumberland

£500-800

183  
**A Victorian carved stone  
font**

circa 1870  
with wooden top  
115cm high by 53cm  
diameter

£500-800

184  
**A pair of bronze  
Pompeian style jardiniere  
stands**

second half of 20th  
century  
77cm high

£500-800





**185**  
**A pair of clam shells**

late 19th century  
the largest 72cm

£800-1,200

**186**  
**A carved stone book with inscribed quotation**

early 20th century  
46cm high 60cm wide

From Ella Wheeler's poem  
"Solitude" (1883)

£300-500

**187**  
**A pair of composition stone fruit baskets**

late 20th century  
44cm high

£200-400

**188**  
**A pair of salt glazed earthenware pedestals**

circa 1870  
43cm high

£100-200



For details of our buyers premium which is added onto the hammer price together with any other applicable charges please refer to our guide for prospective buyers



189  
**A carved bluestone rectangular trough**

25cm high by 110cm long by 45cm deep

£150-250

190  
**A rectangular carved limestone trough**

23cm high by 114cm long by 42cm deep

£150-250

191  
**A roughly hewn rectangular carved stone trough**

20cm high by 100cm long by 45cm deep

£100-200

192  
**A rounded rectangular carved stone trough**

30cm high by 87cm long by 48cm deep

£200-300

193  
**A carved sandstone D shaped trough**

27cm high by 78cm long by 65cm deep

£150-250

Online bidding via SummersPlace Live - register through [www.summersplaceauctions.com](http://www.summersplaceauctions.com)  
No surcharge (*normal BP and VAT apply*)





194  
**A sloping rectangular carved stone trough**

20cm high by 74cm long by 70cm deep

£200-300

195  
**A rectangular carved bluestone trough**

21cm high by 144cm long by 45cm deep

£200-300



196  
**A rectangular carved stone trough**

33cm high by 112cm long by 44cm deep

£200-300



197  
**A rectangular carved stone trough**

19cm high by 84cm long by 32cm deep

£100-200



198  
**A rectangular carved stone trough**

20cm high by 97cm long by 42cm deep

£150-250

199,200,201, 202 No lots



For details of our buyers premium which is added onto the hammer price together with any other applicable charges please refer to our guide for prospective buyers





203



207



204



205



206

203  
**A roughly hewn rectangular carved stone trough**

26cm high by 122cm long by 58cm deep

£200-300

204  
**A roughly hewn rectangular carved stone trough**

24cm high by 92cm long by 44cm deep

£100-200

205  
**A small carved rectangular limestone trough**

16cm high by 96cm long by 38cm deep

£80-120

206  
**A shallow rectangular carved stone trough**

15cm high by 152cm long by 53cm wide

£150-250

207  
**A rectangular carved stone trough**

36cm high by 84cm long by 53cm deep

£250-400

Online bidding via SummersPlace Live - register through [www.summersplaceauctions.com](http://www.summersplaceauctions.com)  
No surcharge (*normal BP and VAT apply*)



**208**  
**An oval aggregated stone trough**

29cm high by 62cm long  
by 45cm deep

£100-200



**209**  
**A rectangular carved stone trough**

28cm high by 80cm long  
by 54cm deep

£250-400



**210**  
**A rectangular carved stone trough**

28cm high by 80cm long  
by 54cm deep

£250-400



**211**  
**A roughly hewn irregular shaped carved sandstone trough**

15cm high by 80cm long  
by 47cm deep

£100-200



**212**  
**An irregular roughly hewn rectangular carved sandstone trough**

30cm high by 80cm long  
by 44cm deep

£100-200

For details of our buyers premium which is added onto the hammer price together with any other applicable charges please refer to our guide for prospective buyers





**213**  
**A rectangular carved**  
**cotswold stone trough**

40cm high by 80cm long  
by 61cm deep

£200-400

**214**  
**A rectangular carved**  
**sandstone**

27cm high by 48cm long  
by 36cm deep

£100-200

**215**  
**A pair of cast iron**  
**planters**

modern

55cm diameter  
together with **another**  
**hexagonal cast iron**  
**planter and a cast iron**  
**mortar**

£200-400

For further images please  
see our website

**216**  
**A roughly hewn irregular**  
**shaped carved stone**  
**trough**

33cm high by 90cm long  
by 70cm deep

£150-250

Online bidding via SummersPlace Live - register through [www.summersplaceauctions.com](http://www.summersplaceauctions.com)  
No surcharge (*normal BP and VAT apply*)





217

**217**  
**A carved sandstone rectangular trough**

27cm high by 112cm long  
by 50cm deep

£150-250

**218**  
**A roughly hewn rectangular carved stone trough**

28cm high by 77cm long  
by 32cm deep

£100-200

**219**  
**Three terracotta oil storage jars**

Southern Mediterranean  
20th century

two with iron stands, the  
largest 90cms high  
together with a glass  
carboy 56cm high

£400-600

**220**  
**A composition stone urn on pedestal, possibly by Austin & Seeley**

second half of 19th century  
118cm high

£100-200

**221**  
**A composition stone urn on pedestal**

possibly by Austin and  
Seeley  
second half of the 19th  
century  
133cm high

£150-250

**222**  
**A composition stone urn on pedestal**

possibly by Austin & Seeley  
114cm high

£200-400



218



219



222

221

220

For details of our buyers premium which is added onto the hammer price together with any other applicable charges please refer to our guide for prospective buyers



223

**A pair of large carved limestone lidded urns with handles on pedestals**

modern  
250cm high

£5,000-8,000

224

**A pair of Victorian terracotta urns**

circa 1870  
together with **two composition stone urns**, possibly by Austin and Seeley,  
2nd half 19th century  
60cm and 50cm high

£100-200

225

**An Edwardian wirework plant stand**

early 20th century  
94cm long

£120-180



Online bidding via SummersPlace Live - register through [www.summersplaceauctions.com](http://www.summersplaceauctions.com)  
No surcharge (*normal BP and VAT apply*)





**226**  
**A pair of unusual carved stone planters**

20th century  
72cm high by 70cm diameter

£800-1,200

**227**  
**A pair of unusual carved stone planters**

20th century  
72cm high by 70cm diameter

£800-1,200

**228**  
**A pair of unusual carved stone planters**

20th century  
72cm high by 70cm diameter

£800-1,200

**229**  
**A pair of Swedish style composition stone lidded urns**

late 20th century  
163cm high

£1,000-1,200



For details of our buyers premium which is added onto the hammer price together with any other applicable charges please refer to our guide for prospective buyers





230

**A pair of stoneware urns**

late 19th century

66cm high

£300-500

231

**A large cast iron urn on pedestal**

late 20th century

176cm high by 100cm diameter

£1,000-1,500

232

**A Victorian cast iron urn**

2nd half 19th century

82cm high

on associated terracotta pedestal 126cms high overall

£200-400

233

**A pair of composition stone birdbaths**

mid 20th century

81cm high

£200-400

Online bidding via SummersPlace Live - register through [www.summersplaceauctions.com](http://www.summersplaceauctions.com)  
No surcharge (normal BP and VAT apply)



234

**234**  
**An unusual pair of painted cast iron square planters**

2nd half 19th century  
made up out of pilaster capitals  
29cm high by 33cm square

£400-600

**235**  
**A similar pair of painted cast iron square planters**

2nd half 19th century  
made up out of pilaster capitals

29cm high by 33cm square

£200-400



235

**236**  
**A composition stone urn**  
late 20th century

65cm high by 70cm diameter

£80-120

**237**  
**A pair of terracotta urns**

late 19th century  
43cm high

£100-200

**238**  
**Two composition stone urns**

late 20th century  
the larger 74cm high

£150-250



For details of our buyers premium which is added onto the hammer price together with any other applicable charges please refer to our guide for prospective buyers





239  
A composition stone wall trough

modern

76cm high by 172cm wide

£1,500-2,500

240  
A pair of Swedish style composition stone lidded urns

20th century

one lacking lid

162cm high

£200-400



241  
A Victorian cast iron jardinière

circa 1870

63cm high

£600-1,000





242  
**▲ Tom Greenshields (1915-1994)**

A bronze, resin and composition  
 stone bird bath

modern

103cm high

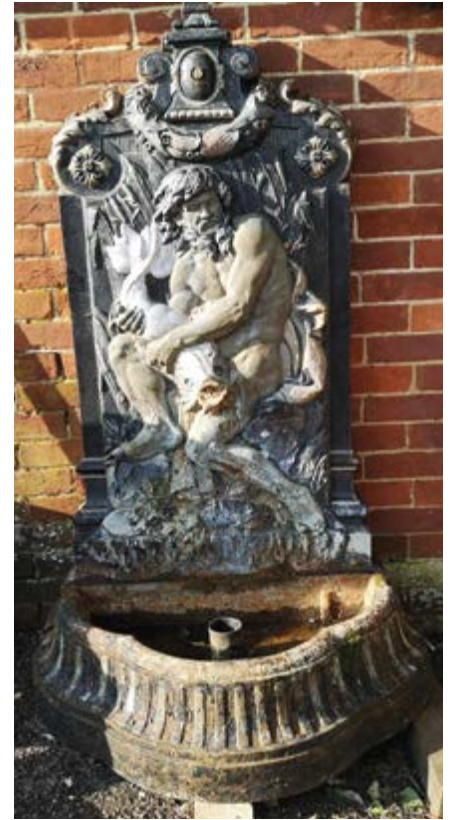
£800-1,200



243  
**A cast iron wall fountain modern**

123cm high

£100-200



244  
**A cast-iron wall fountain**

late 20th century

with lobed bowl  
 dolphin mouth plumbed for water

160cm high by 89cm wide

£500-800

For details of our buyers premium which is added onto the hammer price together with any other applicable charges please refer to our guide for prospective buyers



245  
**A carved Marble Fountain of Boy  
holding a Fish**

late 19th century

dolphin mouths and fish plumbed for  
water 120 cm high

£1,500-2,500

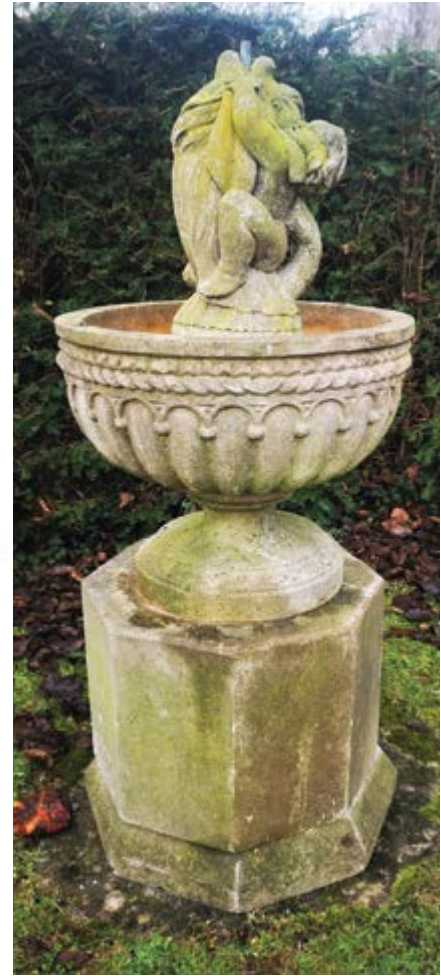


246  
**A cast iron fountain**

French, late 19th century

230cm high by 102cm diameter

£1,500-2,500



247  
**A composition stone fountain on  
pedestal**

late 20th century  
fish mouth plumbed for water  
140cm high

£800-1,200

Online bidding via SummersPlace Live - register through [www.summersplaceauctions.com](http://www.summersplaceauctions.com)  
No surcharge (*normal BP and VAT apply*)





248  
**A Victorian cast iron  
stick stand**

late 19th century  
75cms high

£300-500

249  
**An unusual Gothic style  
carved stone sundial  
pedestal**

with associated armillary  
sphere  
165cm high  
£600-1,000



250  
**A suite of furniture  
comprising of 6 wrought  
iron and wood folding  
chairs and table with  
marble top**

early 20th century  
the table 90cm diameter

£500-800

251  
**A wrought iron love seat**

2nd half 20th century  
110cm long

£200-400



For details of our buyers premium which is added onto the hammer price together with any other applicable charges please refer to our guide for prospective buyers





252  
**A reeded wrought iron curved seat**

19th century  
140cm long

£500-800

253  
**A curved hardwood seat**

20th century  
236cm long

£200-400

254  
**A wrought iron seat**

circa 1900  
150cm long

£200-400

254A  
**A cast iron and wooden slatted seat**

early 20th century  
104cm wide

£200-400

Online bidding via SummersPlace Live - register through [www.summersplaceauctions.com](http://www.summersplaceauctions.com)  
No surcharge (*normal BP and VAT apply*)

255

**A pair of strapwork  
wrought iron seats**

circa 1900  
188cm long

£400-600



256

**A suite of Coalbrookdale  
style Gothic pattern  
furniture**

comprising a seat and two  
chairs  
the seat 126cm long  
together with a pair of  
rustic pattern cast iron seat  
ends

£250-300



257

**A wrought iron and  
wooden seat**

early 20th century  
148cm long, together with  
a matching chair

£150-250



For details of our buyers premium which is added onto the hammer price together with any other applicable charges please refer to our guide for prospective buyers





258  
**A suite of wrought and galvanised iron furniture**

modern  
the table with earlier slate top  
180cm long by 77cm wide

£1,000-1,500

259  
**A wrought iron and sandstone table**

20th century  
184cm by 91cm

£1,500-2,500



Online bidding via SummersPlace Live - register through [www.summersplaceauctions.com](http://www.summersplaceauctions.com)  
No surcharge (*normal BP and VAT apply*)





260  
**A wrought iron strap  
work demi lune seat  
together with a similar  
chair**

modern  
168 cm diameter

£800-1,200



261  
**A rustic pattern cast iron  
seat**

20th century  
97cm long

£500-800



262  
**A wrought iron seat**

late 19th/early 20th century  
186cm long

£200-400



263  
**A Victorian cast iron table**

late 19th century  
with wooden top together  
with a coopered wooden  
vessel  
150cm long

£50-80

For details of our buyers premium which is added onto the hammer price together with any other applicable charges please refer to our guide for prospective buyers



**264  
A wrought iron and  
mesh rocking chair**

modern with wooden foot  
and arm rests  
172cm long

£500-800

**265  
A similar wrought iron  
and mesh rocking chair**

modern with wooden foot  
and arm rests  
172cm long

£500-800

**266  
A Falkirk foundry  
blackberry pattern cast  
iron seat**

late 19th century  
140cm long

See engraving

This seat is illustrated  
in the late 19th century  
Falkirk catalogue, plate  
304 no 3

£300-500

Online bidding via SummersPlace Live - register through [www.summersplaceauctions.com](http://www.summersplaceauctions.com)  
No surcharge (*normal BP and VAT apply*)





267  
**An antler convex mirror**

modern  
84cm diameter

£1,000-1,500



268  
**A pair of demi lune wrought iron strapwork seats**

modern  
168cm diameter internal  
diameter 41cm

£1,500-2,500



269  
**A pair of unusual Victorian cast iron seat ends and frame**

late 19th century

£150-250

For details of our buyers premium which is added onto the hammer price together with any other applicable charges please refer to our guide for prospective buyers





**270**  
A composition stone  
centurion in Roman  
armour

late 20th century  
170cm high

£600-1,000



**271**  
A composition stone  
figure of Hercules

late 20th century  
170cm high

£600-1,000



**272**  
A composition stone  
figure of Minerva dressed  
in armour

late 20th century  
170cm high

£600-1,000



**273**  
After Michelangelo: A  
composition stone figure  
of David

late 20th century  
170cm high

£600-1,000



**274**  
A carved stone figure of  
a putto on a composition  
stone pedestal

1st half 20th century  
163cm high

Provenance; Sotheby's  
sale of Wilsford Manor,  
14th/15th October 1987,  
lot 487

£500-800



**275**  
A pair of composition  
stone terms representing  
Summer and Winter

2nd half 20th century  
144cm high

£600-800



**276**  
A rare tradesman's  
sample lead figure of  
Apollo

mid 18th century  
possibly by John van Nost  
on associated stone  
pedestal  
the figure 47cm high,  
90cm high overall

£1,000-1,500

For details of our buyers premium which is added onto the hammer price together with any other applicable charges please refer to our guide for prospective buyers





277  
**An impressively large  
 carved wooden eagle**

20th century  
 160cm high by 226cm  
 wide

£3,000-5,000



278  
**A pair of composition  
 stone sphinxes**

late 20th century  
 74cm long

£200-400

Online bidding via SummersPlace Live - register through [www.summersplaceauctions.com](http://www.summersplaceauctions.com)  
 No surcharge (*normal BP and VAT apply*)





279  
**A pair of carved wooden sphinxes**

20th century  
77cm high by 120cm long

£200-400

280  
**Two similar carved sandstone lions**

probably north country  
2nd half 19th century  
the large 32cm high by 56cm long

£200-400



281  
**A bronze group of two boys playing acrobats**

2nd half 20th century  
indistinctly signed and  
with foundry stamp  
244cm high

£4,000-6,000



For details of our buyers premium which is added onto the hammer price together with any other applicable charges please refer to our guide for prospective buyers



282  
**An unusual carved white marble stylised lion**

19th century or earlier  
13cm high by 27cm long

£200-400

283  
**A pair of composition stone putti**

late 20th century  
96cm high

£500-800

284  
**A studio carved stone reclining figure**

mid 20th century  
69cm long

Reputedly carved by  
a student of the Slade  
School of Fine Art and  
given to the vendor

£150-250

Online bidding via SummersPlace Live - register through [www.summersplaceauctions.com](http://www.summersplaceauctions.com)  
No surcharge (*normal BP and VAT apply*)





285  
After Giambologna: A  
lead figure of Mercury

early 20th century  
120cm high  
damages

£150-250

286  
A composition stone  
figure of two cherubs  
holding a shell bowl

2nd half 20th century  
100cm high  
together with a  
composition stone trough  
70cm long

£400-600



287  
A composition stone figure of the Venus  
de Milo

late 20th century, 84cm high  
together with a composition stone figure  
of spring  
78cms high  
and a composition stone figure of a putto  
representing autumn on pedestal  
late 20th century, 155cm high

£300-500

288  
An unusual carved stone dog bowl niche

late 19th century  
inscribed 'Dog's Bar'  
80cm high by 57cm wide by 28cm deep  
£250-400



For details of our buyers premium which is added onto the hammer price together with any other applicable charges please refer to our guide for prospective buyers





289

**Stella Shawzin (1920-2020)**

Lesotho Figure

Bronze

55cm high by 88cm wide by 66cm deep

£5,000-7,000

290

**Stella Shawzin (1920-2020)**

Mother and Child

Bronze

27cm high by 65cm wide by 35cm deep

£2,000-3,000

291

**Stella Shawzin (1920-2020)**

Reclining Expectant Mother

Bronze with green patina

Signed and numbered 1 of 8

29cm high by 77cm wide by 48cm deep

£2,000-3,000



Online bidding via SummersPlace Live - register through [www.summersplaceauctions.com](http://www.summersplaceauctions.com)

No surcharge (*normal BP and VAT apply*)

292

**Sculpture of Naturalistic  
form I**

South East Asian teak  
Unique  
260cm high by 50cm wide  
by 50cm deep

£500-1,000

293

**Sculpture of Naturalistic  
form III**

South East Asian Teak  
Unique  
245cm high by 50cm wide  
by 40cm deep

£500-1,000

294

**Sculpture of Naturalistic  
form VII**

South East Asian teak  
Unique  
230cm high by 70cm wide  
by 50cm deep

£500-1,000



For details of our buyers premium which is added onto the hammer price together with any other applicable charges please refer to our guide for prospective buyers



295  
**John Cox**

Taurus  
Bronze  
64cm high by 71cm wide  
by 36cm deep

£2,000-3,000

296  
**Eagle Star Insurance**  
Company Sign

Taken from building  
Gold sprayed bronze resin  
128cm high by 110cm  
wide by 30cm deep

£3,000-5,000

297  
**Michael Mugavazi**

Take Off  
Springstone

14cm high by 30cm wide  
by 24cm deep

£200-400

Online bidding via SummersPlace Live - register through [www.summersplaceauctions.com](http://www.summersplaceauctions.com)  
No surcharge (*normal BP and VAT apply*)





298  
**Colin Kellam**

Cockerel  
Ceramic/Stoneware  
53cm high by 56cm wide  
by 35cm deep

£800-1,000



299  
**Gail Dooley**

Dodo  
Stoneware  
Unique  
60cm high by 50cm wide

£1,200-1,800

300  
**Nik Burns**

Giant Spider  
Steel and Found Items  
40cm high by 80cm wide

£1,000-2,000



For details of our buyers premium which is added onto the hammer price together with any other applicable charges please refer to our guide for prospective buyers



301  
**Gail Dooley**

Abstract Owl  
Ceramic on wood and steel base  
Unique  
Signed 'Gail Dooley 2020'  
136cm high by 30cm wide by 24cm deep

£1,200-1,800

302  
**John Cox**

Release the Peace  
Bronze  
90cm high by 45cm wide by 35cm deep

£3,000-4,000



303  
**Anon**

Morning Stretch  
Bronze resin  
104cm high by 80cm wide by 34cm deep  
£1,200-1,800



Online bidding via SummersPlace Live - register through [www.summersplaceauctions.com](http://www.summersplaceauctions.com)  
No surcharge (*normal BP and VAT apply*)



304

**Sean Rice**

Ancient Figure  
Bronze and Copper  
Unique  
100cm high by 40cm  
wide by 38cm deep

£4,000-6,000

305

**Sean Rice**

Man and Baby  
Bronze  
Signed 'Rice'  
Unique  
100cm high by 40cm  
wide by 42cm deep

£4,000-6,000



For details of our buyers premium which is added onto the hammer price together with any other applicable charges please refer to our guide for prospective buyers





306

**Mark Firth**

Relic

Metal

Stainless steel

Unique

335cm high by 214cm  
wide by 175cm deep

£20,000-30,000

Online bidding via SummersPlace Live - register through [www.summersplaceauctions.com](http://www.summersplaceauctions.com)  
No surcharge (*normal BP and VAT apply*)



307  
**Taylor Nkomo**

Carrying my Vision  
(1979)  
Serpentine  
35cm high by 50cm wide  
by 40cm deep

£3,000-4,000



308  
**Acrobat**

Washington Matafi  
Spring stone  
28cm high by 39cm wide  
with certificate of  
authenticity

£400-600

309  
**Hattakitkosol Somchai**

Ballerina  
Signed '98 Somchai'  
Bronze and Marble  
55cm high by 39cm wide  
£800-1,200



For details of our buyers premium which is added onto the hammer price together with any other applicable charges please refer to our guide for prospective buyers



310  
**Vladimir Zila, Senior**

Astera  
Glass  
Signed, Edition 1 of 15  
30cm high by 8cm wide by 8cm deep

£600-800



311  
**Vladimir Zila, Senior**

Hidden Cross  
Glass  
Signed, edition 1 of 5  
28cm high by 9cm wide by 9cm deep

£600-800

Diane Maclean is a sculptor and environmental artist. She has exhibited her work widely in the UK and around the world and many of her sculptures are held in public and private collections.

She works predominantly in stainless steel and light, often on a large scale. In fabricating her structures she has worked with Birch Engineering since 1992. The partnership brings art and engineering together and ensures her imaginative projects are completed to the highest standards of quality and durability.

The buyer of each of the lots by Diane will receive a copy of the exhibition catalogue of her work *Lines of Light* held at the Burghley Sculpture garden in 2022





312  
†Diane Maclean

Shoots  
coloured and polished  
stainless steel on painted  
wood and oak stand  
140cm high

£250-400



313  
†Diane Maclean

Flutter  
spray painted mild steel  
and tiled on base  
137cm high

£450-750



314  
†Diane Maclean

Man for All Seasons/  
Ceilings  
painted recycled steel, on  
base  
247cm long

This was exhibited at  
Institute of Education  
during the 1990's but  
proved too tall for the  
exhibition space and a  
portion of the ceiling had  
to be removed, hence the  
title

£300-500



315  
†Diane Maclean

Hector  
painted mild steel, on base  
260cm high

£300-500

For details of our buyers premium which is added onto the hammer price together with any other applicable charges please refer to our guide for prospective buyers



316  
†Diane Maclean

Survivor  
painted mild steel  
constructed from recycled  
car parts  
270cm long

£800-1,200

317  
†Diane Maclean

Reclining Man  
painted steel  
226cm long

£300-400



318  
†Diane Maclean

Rose  
coloured stainless steel  
oxidised and polished  
stainless steel  
147cm long, diameter of  
flower 83cm

£500-800



Online bidding via SummersPlace Live - register through [www.summersplaceauctions.com](http://www.summersplaceauctions.com)  
No surcharge (*normal BP and VAT apply*)

319

**Isaac Kahn**

Pas De Deux

Bronze

Signed, edition 3 of 6

117cm high by 50cm wide by 37cm deep

£10,000-15,000



For details of our buyers premium which is added onto the hammer price together with any other applicable charges please refer to our guide for prospective buyers





320  
▲ Jonathan Sells

Embracing Family  
carved Purbeck stone  
152cm high overall

£400-600



321  
Le Bao

Abstract  
Bronze  
signed Le Bao  
132cm high

£1,000-1,500



322  
Le Bao

seated abstract female musician  
Bronze  
signed le Bao  
88cm high

£500-800

Online bidding via SummersPlace Live - register through [www.summersplaceauctions.com](http://www.summersplaceauctions.com)  
No surcharge (*normal BP and VAT apply*)



323  
**Stag on a Craggy Rock**

Cast Iron  
170cm high by 92cm wide  
by 55cm

£3,000-5,000

324  
**John Cox**

Pair of Swans water feature  
Bronze  
The taller 120cm high

£4,000-6,000



325  
**John Cox**

Crocodile  
Bronze  
23cm high by 76cm wide  
by 26cm deep

£800-1,200



For details of our buyers premium which is added onto the hammer price together with any other applicable charges please refer to our guide for prospective buyers



326  
**Patrick Sephani**

Mother Figure  
Serpentine stone  
Unique  
34cm high by 20cm wide by 14cm deep

£300-400



327  
**Makonde**

African Queen  
Ebony  
Unique  
57cm high, by 35cm wide by 43cm deep

£2,000-3,000



328  
**Anon**

After Picasso  
Bronze  
50cm high by 19cm wide by 20cm deep

£800-1,200

Online bidding via SummersPlace Live - register through [www.summersplaceauctions.com](http://www.summersplaceauctions.com)  
No surcharge (*normal BP and VAT apply*)





329  
**Kate Semple**

Hen  
Portland Stone & Glass  
Unique  
70cm high, 38cm wide, 26cm  
deep

£1,500-2,500



330  
**▲ Brian Alabaster**

Seated Boy  
lead alloy  
signed with artists initials and  
numbered II/X  
96cm high by 46cm wide

£1,500-2,500



331  
**▲ Brian Alabaster**

Seated Boy  
lead alloy  
signed with sculptor's initials BA and numbered  
IX/X  
67cm high by 87cm long

£2,000-3,000

For details of our buyers premium which is added onto the hammer price together with any other applicable charges please refer to our guide for prospective buyers



Online bidding via SummersPlace Live - register through [www.summersplaceauctions.com](http://www.summersplaceauctions.com)  
No surcharge (*normal BP and VAT apply*)

332

**Gail Dooley**

Falcon

Stoneware on oak plinth

Unique

80cm high by 43cm wide  
by 23cm deep

£1,200-1,800

333

**Martin Scorey**

Crab

Found Objects, Metal

Unique

18cm high, by 35cm wide  
by 34cm deep

£600-800

334

**Anon**

Blue Sheba

Bronze

38cm high by 26cm wide  
by 35cm deep

£400-600

335

**†Wilfred Pritchard**

Brassed Away

Bronze and brass

Unique

230cm high by 70cm wide  
by 85cm deep

£10,000-15,000



For details of our buyers premium which is added onto the hammer price together with any other applicable charges please refer to our guide for prospective buyers





336  
**Jonty Manuel**

The Shell  
Resin  
Piece 75cm high; plinth  
88cm high  
£3,000-4,000

338  
**Brendan Hesmondhalgh**

Greyhound on Circle  
Stoneware  
Unique  
120cm high

£4,000-6,000

337  
**Edmore Chijumani**

Tiger Fish  
Butter Jade Stone

21cm high

£500-700



Online bidding via SummersPlace Live - register through [www.summersplaceauctions.com](http://www.summersplaceauctions.com)  
No surcharge (*normal BP and VAT apply*)



339  
**Fluidity**

Stainless Steel, Unique  
510cm high

£15,000-20,000

For details of our buyers premium which is added onto the hammer price together with any other applicable charges please refer to our guide for prospective buyers





340  
**Misti: Growth**

Ash, stained, waxed and  
parcel gilt  
2019  
106cm high by 16cm wide  
by 15cm deep

£2,500-3,500

Online bidding via SummersPlace Live - register through [www.summersplaceauctions.com](http://www.summersplaceauctions.com)  
No surcharge (*normal BP and VAT apply*)



341  
**Misti: Woodland Spirit**

Oiled ash on a sycamore  
base  
2021  
220cm high by 60cm wide  
by 43cm deep

£3,000-4,000



342  
**Misti: With a Little Help  
From My Friends**

Stained and parcel gilt  
lime 2021  
85cm high by 35cm wide  
by 13cm deep

£4,000-6,000

For more information on  
Misti and the inspiration  
behind these works please  
see lot 54 and visit our  
website.





**343**  
**Misti: Entwined Forms**  
 Cenerino rosso alabaster on an acrylic base  
 2019  
 31cm high by 19cm wide by 13cm deep  
 £2,500-3,500



**344**  
**Misti: Helicoil** (A triumph of vision over reality)  
 Ancaster stone  
 2018  
 64cm high by 31cm wide by 14cm deep  
 £1,500-2,500



**345**  
**Misti: Mother and Child**  
 Parcel gilt and ebonised lime wood  
 2018  
 50cm high by 13.5cm wide by 12cm deep  
 £2,500-3,500

For details of our buyers premium which is added onto the hammer price together with any other applicable charges please refer to our guide for prospective buyers



Online bidding via SummersPlace Live - register through [www.summersplaceauctions.com](http://www.summersplaceauctions.com)  
No surcharge (*normal BP and VAT apply*)

346

**Misti: Sentinel**

Oiled ash on a burnt oak  
base  
2021  
274cm high by 55cm wide  
by 48cm deep

£3,500-4,500



347

**Misti: Flow**

Ebonised ash on sandstone  
base with lacquered lime  
and perspex details  
2017  
88cm high by 135cm wide  
by 30cm deep

£3,500-4,000

348

**Misti: Great Ball of Fire**

Lacquered lime wood and  
illuminated rock crystal  
on a leather-wrapped steel  
base  
2021  
104cm high by 75cm wide  
by 34cm deep

£4,000-5,000

349

**Misti: Self Portrait**

Portland stone  
2019  
28cm high by 18cm wide by 17cm deep

£2,500-3,500



350

**Misti: Autumn Flame**

Oiled spruce, gilded poplar and  
burnt oak  
2021  
137cm high by 62cm wide by  
33cm deep

£3,000-3,500

For details of our buyers premium which is added onto the hammer price together with any other applicable charges please refer to our guide for prospective buyers





351

**Misti: Bud**

Bath stone on a chocolate  
lacquered timber base  
2018

32cm high by 19.5cm  
wide by 29cm deep

£2,000-2,500

352

**Misti: Vessel**

Ebonised lime wood and  
red jade  
2017

22cm high by 25cm wide

by 30cm deep

£3,000-4,000

353

**Misti: The Untold Secret**

Ironstone  
2019

39cm high by 27cm wide  
by 21cm deep

£3,000-4,000

Online bidding via SummersPlace Live - register through [www.summersplaceauctions.com](http://www.summersplaceauctions.com)  
No surcharge (*normal BP and VAT apply*)



354  
**Misti: Standing Stone**

Painted sandstone and  
pine  
2019  
60cm high by 17.5cm  
wide by 13cm deep

£2,500-3,500



355  
**Misti: It Comes From  
Within**

Burnt and oiled oak and  
gilded spruce  
2020  
57cm high by 39cm  
wide by 31cm deep

£2,500-3,500



356  
**Misti: The Opportunist**

Lacquered resin and  
stained and waxed ash  
on a burnt and oiled oak  
base  
2021  
175cm high by 60cm  
wide by 30cm deep

£1,500-2,500

For details of our buyers premium which is added onto the hammer price together with any other applicable charges please refer to our guide for prospective buyers



357  
**Misti: Spirit of Motion 1**

Lime wood  
2020  
26cm high by 20cm wide  
by 10cm deep

£1,000-2,000

359  
**Misti: Spirit of Motion 3**

Lime wood  
2020  
26cm high by 20cm wide  
by 10cm deep

£1,000-2,000

358  
**Misti: Spirit of Motion 2**

Lime wood  
2020  
26cm high by 20cm wide  
by 10cm deep

£1,000-2,000

Online bidding via SummersPlace Live - register through [www.summersplaceauctions.com](http://www.summersplaceauctions.com)  
No surcharge (*normal BP and VAT apply*)





360  
**Misti: Spirit of Motion 4**

Lime wood  
2020  
26cm high by 20cm wide  
by 10cm deep

£1,000-2,000



361  
**Misti: Spirit of Motion 5**

Lime wood  
2020  
26cm high by 20cm wide  
by 10cm deep

£1,000-2,000

362  
**Misti: The Perfectionist**

Cenerino grigio alabaster,  
reclaimed oak and resin  
with painted details  
2020  
32cm high by 76cm wide  
by 14cm deep

£3,000-4,000



For details of our buyers premium which is added onto the hammer price together with any other applicable charges please refer to our guide for prospective buyers



The Rod Vass collection  
for further information  
please visit our website

363  
**A monumental  
polyurethane resin  
deconstructed hand**

240cm long by 165cm  
wide by 58cm deep

£1,000-1,500

364  
**A polyurethane resin  
troll skull**

144cm wide  
This was commissioned  
for Beowulf TV series  
£200-400

365  
**A polyurethane resin  
horses head**

98cm high

This was made for the  
Tomb Raider film but  
never used in production

£300-500

Online bidding via SummersPlace Live - register through [www.summersplaceauctions.com](http://www.summersplaceauctions.com)  
No surcharge (*normal BP and VAT apply*)



366  
**Three polyurethane resin spheres**

on iron stands the largest 120cm diameter

These were originally commissioned for an installation at Chester Zoo and subsequently used in other TV productions

£800-1,200



367  
**A set of four monumental polyurethane resin dinosaur eggs**

240cm long by 165cm wide by 58cm deep

These were used in an advert for Burberry

£1,000-1,500

368  
**A set of four polyurethane resin trees on iron stands**  
 the largest 400cm high.

These were used in a number of productions, including the film Tolkien, War of the Worlds and the science fiction film, Intergalactic

£1,000-1,500



For details of our buyers premium which is added onto the hammer price together with any other applicable charges please refer to our guide for prospective buyers





369  
A **monumental polyurethane resin archway**

on iron frame  
337cm high by 246cm wide  
£1,000-1,500

371  
A **similar set of four monumental resin dinosaur eggs**

240cm long by 165cm wide by 58cm deep  
£1,000-£1,500.



370  
A **monumental classical style polyurethane resin foot**

192cm high by 206cm wide.

This can be displayed either horizontally or vertically on iron stand. This was commissioned for a video for the band London Grammar

£1,000-1,500

Online bidding via SummersPlace Live - register through [www.summersplaceauctions.com](http://www.summersplaceauctions.com)  
No surcharge (*normal BP and VAT apply*)

## THE SHAKA ZULU RESTAURANT, CAMDEN LOCK MARKET, LONDON

Following redevelopment of Camden Lock Market many of the fittings from the renowned 2400 square metre Shaka Zulu restaurant have been removed and included in this auction.

The Zulu art that adorns the walls was commissioned by South African museums, allowing copies of their artefacts to be made specifically for the restaurant. The hand-made furniture, the wooden murals and the bronzes, all made in South Africa & Asia had to be transported to the UK in 40 lorries.

To ensure authenticity, the developers have held extensive consultation with members of the Zulu nation in South Africa, including King Zwelithini.

It took 2 years for the carvings and furnishings to be made at a cost of £5.5 million. Enormous intricately hand-carved wooden and patinated fibreglass panels and figures of Zulu warriors feature majestic scenes from Africa, together with hand carved furniture also with a tribal theme.

The world-famous Camden Lock Market in London, which is situated by the Regent's Canal on a site formerly occupied by warehouses and other premises associated with the canal. By the early 1970's the canal trade had ceased, and a northern urban motorway was planned that would cut through the site, making any major permanent redevelopment impossible, and in 1974 a temporary market was established. By 1976, when plans for the motorway were abandoned, the market had become a well-known feature of Camden Town. Originally, the Lock was a market for crafts, occupying some outdoor areas by the canal and various existing buildings. It attracted large numbers of visitors partly due to stalls being open on Sundays, when previous to the Sunday Trading Act 1994, shops were not permitted to operate on Sundays. It was once the fourth-most popular visitor attraction in London, attracting approximately 100,000 people each weekend.

Originally built as a horse hospital which served the horses pulling Pickford's distribution vans and barges along the canal, Camden Stables Market makes up the largest portion of the famous Camden Lock Market complex. Horses injured pulling barges along the canals would come here for treatment and rehabilitation. The Grade II listed stables now house an array of shops and stalls selling a variety of items from the unique to the exotic.

Please see our website for more pictures and videos of the fittings from Shaka Zulu restaurant.

For details of our buyers premium which is added onto the hammer price together with any other applicable charges please refer to our guide for prospective buyers



371A

### **A massive patinated fibreglass figure of King Shaka of the Zulus**

600cm high by 350cm wide

Shown in situ at the Shaka Zulu restaurant

£2,000-4,000





**372**  
An impressive and colossal patinated fibreglass figure of a Zulu warrior

385cm high  
£4,000-6,000

**373**  
A similar impressive and colossal patinated fibreglass figure of a Zulu warrior

385cm high  
£4,000-6,000



**374**  
A similar impressive and colossal patinated fibreglass figure of a Zulu warrior

385cm high  
£4,000-6,000

**375**  
A similar impressive and colossal patinated fibreglass figure of a Zulu warrior

385cm high

Online bidding via SummersPlace Live - register through [www.summersplaceauctions.com](http://www.summersplaceauctions.com)  
No surcharge (*normal BP and VAT apply*)





**376**  
A similar impressive  
and colossal patinated  
fibreglass figure of a Zulu  
warrior

385cm high  
£4,000-6,000



**378**  
A similar impressive  
and colossal patinated  
fibreglass figure of a Zulu  
warrior

385cm high  
£4,000-6,000

**377**  
A similar impressive  
and colossal patinated  
fibreglass figure of a Zulu  
warrior

385cm high  
£4,000-6,000

**379**  
A similar impressive  
and colossal patinated  
fibreglass figure of a Zulu  
warrior

385cm high  
£4,000-6,000

For details of our buyers premium which is added onto the hammer price together with any other applicable charges please refer to our guide for prospective buyers



**380**  
**A similar impressive and colossal patinated fibreglass figure of a Zulu warrior**

385cm high

£4,000-6,000



**382**  
**An similar impressive patinated fibreglass figure of a Zulu warrior**

385cm high

£4,000-6,000

**383**  
**A similar impressive and colossal patinated fbreglass figure of a Zulu warrior**

385cm high

£4,000-6,000

Online bidding via SummersPlace Live - register through [www.summersplaceauctions.com](http://www.summersplaceauctions.com)  
 No surcharge (*normal BP and VAT apply*)





**384**  
**Two patinated fibreglass figures of Zulu warriors**

198cm high

£1,000-1,500



**385**  
**Two similar patinated fibreglass figures of Zulu warriors**

198cm high

£1,000-1,500

For details of our buyers premium which is added onto the hammer price together with any other applicable charges please refer to our guide for prospective buyers





386  
A monumental patinated  
fibreglass figure of the Zulu  
king Shaka

428cm high

£5,000-8,000

387  
A bronze figure of a Zulu  
woman

194cm high

£1,500-2,500



388  
A bronze figure of a naked Zulu  
man

202cm high

£1,500-2,500

Online bidding via SummersPlace Live - register through [www.summersplaceauctions.com](http://www.summersplaceauctions.com)  
No surcharge (*normal BP and VAT apply*)



389

389  
A bronze figure of a Zulu man

181cm high

£1,500-2,500



390

390  
A bronze figure of a Zulu man

193cm high

£1,500-2,500



391  
A bronze figure of a kneeling Zulu warrior

122cm high

£1,000-1,500

392  
A patinated fibreglass figure of a seated Zulu warrior

110cm high

£400-600



For details of our buyers premium which is added onto the hammer price together with any other applicable charges please refer to our guide for prospective buyers





393  
A bronze figure of a Zulu warrior

162cm high

£1,200-1,800



394  
A pair of carved granite bowls on stands

104cm high

£600-800

395  
A similar pair of carved granite bowls on stands

104cm high

£600-800

Online bidding via SummersPlace Live - register through [www.summersplaceauctions.com](http://www.summersplaceauctions.com)  
No surcharge (*normal BP and VAT apply*)



396

**An impressive patinated fibreglass plaque modelled in high relief with elephants**

472cms high by 644cm long

£10,000-15,000



397

**A massive and impressive patinated fibreglass plaque decorated in relief with tribal figures**

650cm high by 888cm long

£8,000-12,000



For details of our buyers premium which is added onto the hammer price together with any other applicable charges please refer to our guide for prospective buyers



398  
**An impressive patinated  
fibreglass frieze**

185cm high  
1608cm long in 6 panels  
part showing

see website for more  
images  
£8,000-12,000



399  
**An impressive patinated  
fibreglass plaque**

275cm high by 390 long

£4,000-6,000



400  
**An impressive patinated  
fibreglass frieze**

260cm high by 835cm  
long

£8,000-12,000

Online bidding via SummersPlace Live - register through [www.summersplaceauctions.com](http://www.summersplaceauctions.com)  
No surcharge (*normal BP and VAT apply*)





**401**  
**A carved hardwood tribal wall plaque**

with applied shell and beadwork decoration  
 185cm high

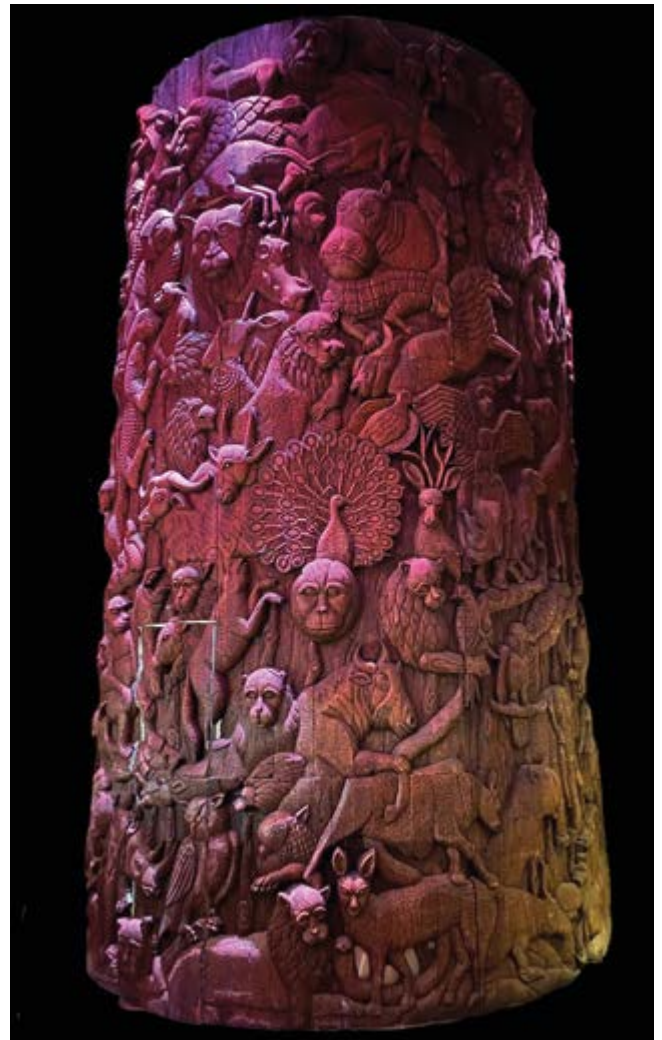
£600-800



**402**  
**A carved hardwood tribal wall plaque**

with applied shellwork decoration  
 300cm high

£600-800



**403**  
**A monumental semi circular hardwood tower carved in high relief with tribal figures and animals**

in 20 sections  
 approx 610cm high by 600cm diameter

£10,000-15,000

For details of our buyers premium which is added onto the hammer price together with any other applicable charges please refer to our guide for prospective buyers





404

**404**  
**A collection of 25 carved hardwood panels**

carved in relief with tribal figures  
average size 40cm high by 30cm wide, each iron upright mounted with 5 panels

£1,000-1,500



408

**405**  
**A similar collection of 25 carved hardwood panels**

£1,000-1,500

**406**  
**A similar collection of 25 carved hardwood panels**

£1,000-1,500

**407**  
**A similar collection of 24 carved hardwood panels**

£1,000-1,500

**408**  
**A run of thirty cast iron balustrade panels**

with hardwood handrail

each 99cm high by 96cm long

£1,500-£2,500

**409**  
**A similar run of thirty cast iron balustrade panels**

with wooden handrail

£1,500.-2,500

**410**  
**A similar run of forty cast iron balustrade panels**

with wooden handrail

£2,000-3,000

Online bidding via SummersPlace Live - register through [www.summersplaceauctions.com](http://www.summersplaceauctions.com)  
No surcharge (*normal BP and VAT apply*)



**411**  
**A collection of 100 square stained wood panels**

each 58cm by 59cm  
 More available by private treaty

£2,500-4,000



**412**  
**A carved hardwood tribal wall figure**

with applied shell  
 decoration  
 250cm high

£500-800



**413**  
**A carved hardwood tribal plaque**

with applied beadwork  
 and shell decoration  
 230cm high

£1,000-1,500

For details of our buyers premium which is added onto the hammer price together with any other applicable charges please refer to our guide for prospective buyers



416



417

416  
A gilded carved  
hardwood buffalo head

with lapis lazuli inlaid ears  
and eyes  
62cm high by 145 wide

£1,000-1,500

417  
A similar gilded and  
carved hardwood buffalo  
head

62cm high by 145cm wide

£1,000-1,500



414  
A carved hardwood  
stylised bird with applied  
shellwork decoration

208cm high

£800-1,200



415  
A gilded carved hard-  
wood stylised leopard

84cm high

£600-1,000





418



419

418  
A similar gilded and carved  
hardwood buffalo head

62cm high by 145cm wide

£1,000-1,500

419  
A similar gilded and carved  
hardwood buffalo head

62cm high by 145cm wide

£1,000-1,500

420  
An impressive gilded carved  
wood stylised lion

on rock work base

164cm high by 270cm long

£4,000-6,000



For details of our buyers premium which is added onto the hammer price together with any other applicable charges please refer to our guide for prospective buyers



421  
A carved hardwood  
figure of a Zulu man  
with his dog

200cm high

£500-800



422  
A set of three upholstered  
hardwood chairs

£300-500



423  
A set of four upholstered  
hardwood chairs

£400-600



424  
Two inlaid marble and  
hardwood occasional  
tables

50cm diameter

£500-800

Online bidding via SummersPlace Live - register through [www.summersplaceauctions.com](http://www.summersplaceauctions.com)  
No surcharge (*normal BP and VAT apply*)



425  
A set of three upholstered  
hardwood chairs

£300-500



426

426  
A pair of upholstered  
hardwood chairs

£200-400

427  
A pair of upholstered hard-  
wood chairs

£300-500



427

428  
Two marble inlaid  
hardwood occasional  
tables

62cm diameter

£1,500-2,500



For details of our buyers premium which is added onto the hammer price together with any other applicable charges please refer to our guide for prospective buyers





432

433

429  
Three upholstered  
hardwood stools

432  
An upholstered  
hardwood seat

£150-250

100cm long

430  
Two inlaid marble and  
hardwood occasional  
tables

£200-400

50cm diameter

433  
An upholstered carved  
hardwood chair

£150-250

£500-800

431  
A pair of upholstered  
hardwood chairs

£200-400



Online bidding via SummersPlace Live - register through [www.summersplaceauctions.com](http://www.summersplaceauctions.com)  
No surcharge (normal BP and VAT apply)



434

434  
A pair of upholstered  
hardwood chairs

£200-400



435

435  
A pair of upholstered  
hardwood chairs

£200-400



436  
An upholstered  
hardwood chair

£100-200

437  
An inlaid marble and  
hardwood table

50cm diameter, together  
with a pair of hardwood  
bowls on stands, 62cm  
high  
(one bowl on stand show-  
ing)

£300-500



438  
An inlaid marble hard-  
wood table

60cm diameter

£800-1,200



For details of our buyers premium which is added onto the hammer price together with any other applicable charges please refer to our guide for prospective buyers





439

**A stuffed chub by Cooper**

with Cooper and Sons  
label  
dated 1927  
(restorations)  
31cm high by 64cm wide

£200-300

440

**Two stuffed rudd by  
Cooper**

dated 1917  
39cm high by 75cm wide

£600-800

441

**A stuffed tench**

with Stanley Mead Henley  
on Thames label(restored)  
36cm high by 51cm wide

£100-200

442

**A goldfish by A Hall**

dated 1996  
16cm high by 29cm wide

£100-150

Online bidding via SummersPlace Live - register through [www.summersplaceauctions.com](http://www.summersplaceauctions.com)  
No surcharge (normal BP and VAT apply)





443  
**Two stuffed koi carp**  
 with A Hall label  
 dated 1997  
 52cm high by 97cm wide  
 £200-300



444  
**A stuffed carp**  
 with A Hall label  
 dated 1994  
 31cm high by 74cm wide  
 £80-120



445  
**A plaster cast carp**  
 dated 1979  
 60cm high by 98cm wide  
 £120-180



446  
**A rainbow trout trophy**  
 on shield by A Hall  
 dated 2002  
 122cm wide  
 £50-80

For details of our buyers premium which is added onto the hammer price together with any other applicable charges please refer to our guide for prospective buyers



447  
**A Red deer trophy**  
 recent  
 145cm high

£500-800

448  
**A Cape buffalo trophy on shield**  
 recent  
 103cm wide

£400-600

449  
**A large Canadian Moose head mount**  
 recent  
 111cm high

£2,000-3,000

450  
**A very large Mule deer head**  
 recent  
 107cm high

£500-800



448



Online bidding via SummersPlace Live - register through [www.summersplaceauctions.com](http://www.summersplaceauctions.com)  
 No surcharge (*normal BP and VAT apply*)



**451**  
**An American Bison head**  
**mount**

circa 1900  
68cm deep

£800-1,200

**452**  
**A Mouflon trophy**

on decorative shield  
mid 20th century  
77cm high

£500-800



**453**  
**A Nile Lechwe trophy by**  
**Rowland Ward**

dated 1929  
54cm deep

£400-600

**454**  
**A very large Caribou**  
**head mount**

152cm wide

£700-900



For details of our buyers premium which is added onto the hammer price together with any other applicable charges please refer to our guide for prospective buyers





456

455

**A brindled Gnu trophy**

recent

85cm deep

£500-800

456

**A very large 27 point Red Deer trophy**

on shield

2nd half 20th Century

117cm high

£800-1,200

457

**A very large 26 point Red Deer trophy**

on (thin) shield

2nd half 20th Century

127cm high

£800-1,200

458

**A wild boar trophy**

on shield

2nd half 20th Century

74cm high

£400-600



**459**  
**A Mammoth tooth and partial jaw section**

Pleistocene  
 possibly British  
 the specimen 39cm high  
 Found in a claypit in Oxfordshire

£800-1,200



**460**  
**A large Hippo tusk gong**

by Rowland Ward  
 circa 1900  
 50cm high

£1,000-1,500



**461**  
**A large Elephant foot tea caddy**

with Rowland Ward label to rear  
 circa 1920  
 22cm high  
 (UK buyer only due to export restrictions)

£500-800

For details of our buyers premium which is added onto the hammer price together with any other applicable charges please refer to our guide for prospective buyers



**462  
An anthropomorphic red squirrel case**

late 19th century  
46cm by 60cm  
£1,500-2,500

**463  
A set of three mounted starfish**

(poraster superbus and phidiaster spp)  
on metal bases

£300-500

**464  
A set of four soft mounted coral fans**

soft corals: gorgonacea  
100cm x 70cm  
70cm x 80cm  
70cm x 60cm  
60 x 60 cm  
each on metal stands

12 x 12 cm  
(all non-CITES):  
Melithaeidae sp. (Sulawesi, Indonesia), from old collection

£600-1,000

**465  
A large wall case of tropical crabs**

recent  
60cm by 82 cm

£500-800

Online bidding via SummersPlace Live - register through [www.summersplaceauctions.com](http://www.summersplaceauctions.com)  
No surcharge (normal BP and VAT apply)





466  
A case of golden plover and snipe

early 20th Century  
43cm high

£60-100

467  
Two wall cases of Hawk moths

1st half 20th century  
the larger 59cm by 59cm

£500-800



468  
A juvenile Ichthyosaur fossil

Stenopterygius quadriscissus  
Lower Jurassic  
Holzmaden Germany  
the specimen 64cm long

Measurements including frame: 60cm high x 103cm wide x 3.5cm deep; with wall mounted brackets 73cm high  
Frame and mount: steel surround frame and wall mounts with supporting brackets behind  
Weight (inc. frame): 33.5kg

£4,000-6,000



For details of our buyers premium which is added onto the hammer price together with any other applicable charges please refer to our guide for prospective buyers



469  
**A leopard skin**  
 first half 20th century  
 by repute from the same  
 plantation as lot 470

228cm long

£500-800

471  
**A freestanding New  
 Guinean crowned pigeon**

20th century  
 45cm high

£500-800



470  
**A collection of snake  
 skins**

Malaya  
 first half 20th century  
 by repute these represent  
 all the snakes killed on a  
 plantation in one year

£80-120

Online bidding via SummersPlace Live - register through [www.summersplaceauctions.com](http://www.summersplaceauctions.com)  
 No surcharge (*normal BP and VAT apply*)



472  
**A freestanding satyr  
tragopan**

late 20th century  
39cm high

£150-250



473  
**A dome of a curl crested  
toucan**

late 19th century  
52cm high

£1,200-1,800

474  
**Two deer trophies**  
a Roe deer trophy  
mid 20th century, 22cm  
high  
together with  
an unusual Fallow deer  
trophy, on shield  
2nd half 20th Century,  
60cm high

£20-30



For details of our buyers premium which is added onto the hammer price together with any other applicable charges please refer to our guide for prospective buyers





475  
**A very unusual folk art  
pair of black swans**

made from mussel shells  
late 19th / early 20th  
century  
74cm long

£500-800

476  
**A pietra dura table top**

modern  
India  
122cm by 77cm

£300-500

477  
**In the manner of Henry  
Ward: A wall case of  
starlings and a chaffinch**

late 19th century  
35cm high by 40cm wide

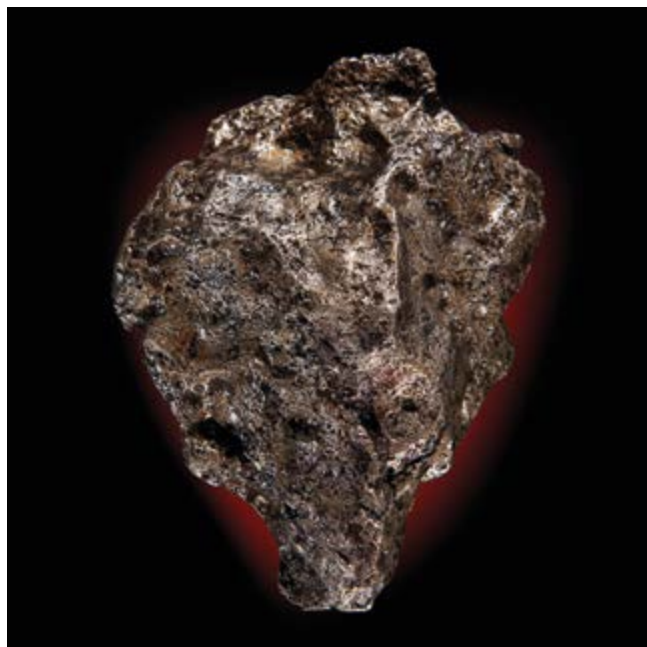
£400-600



478  
A quartz and calcite  
crystal bed

Arkansaw  
34cm high by 39cm wide

£800-1,200



479  
A Campo de Cielo  
meteorite

Argentina  
18cm high, 6.9kg

£1,800-2,200



480  
A large nephrite freeform

44cm high by 35cm wide

£2,500-4,000

For details of our buyers premium which is added onto the hammer price together with any other applicable charges please refer to our guide for prospective buyers



**481  
Two rose quartz points**

Madagascar  
on wooden stands  
84cm high overall

£2,000-3,000

**482  
An aquamarine and  
muscovite freeform**

23cm high

£1,800-2,500

**483  
A large quartz point**

Madagascar  
on wooden stand  
102cm high overall

£2,000-3,000

**484  
A large kyanite in quartz  
specimen**

Brazil  
49cm high

£800-1,200

Online bidding via SummersPlace Live - register through [www.summersplaceauctions.com](http://www.summersplaceauctions.com)  
No surcharge (*normal BP and VAT apply*)





485  
**A moss agate sphere**

South Africa  
18cm diameter

£200-400

486  
**An opalised specimen of fossil wood**

Indonesia, Triassic  
36cm high

£500-800



487  
**A fossil wood specimen**

Indonesia, Triassic  
on metal stand  
56cm wide

£300-500



488  
**An unusual Pyrite freeform with quartz crystals**

Peru  
34cm

£600-1,000



For details of our buyers premium which is added onto the hammer price together with any other applicable charges please refer to our guide for prospective buyers



Online bidding via SummersPlace Live - register through [www.summersplaceauctions.com](http://www.summersplaceauctions.com)  
No surcharge (*normal BP and VAT apply*)



489  
 ‡An impressive and large  
 rock crystal multi point  
 cluster

Brazil  
 on plinth  
 50cm by 78cm by 67cm

£2,000-3,000

490  
 ‡Large smokey quartz  
 specimen

Brazil  
 on plinth  
 31cm by 68cm by 54cm

£600-1,000

491  
 ‡Large Fluorite-Baryte  
 specimen

on plinth  
 15cm by 60cm by 46cm  
 Measurements do not  
 include the plinth

£2,000-3,000



For details of our buyers premium which is added onto the hammer price together with any other applicable charges please refer to our guide for prospective buyers





492  
**A large rose quartz  
sphere**

Madagascar  
23cm diameter

£1,500-2,000

494  
**An unusual smoky  
citrine sphere**

19cm diameter

£1,500-2,000

493  
**A ruby in fuchsite and  
kyanite sphere**

India  
20cm diameter

£800-1,200

Online bidding via SummersPlace Live - register through [www.summersplaceauctions.com](http://www.summersplaceauctions.com)  
No surcharge (*normal BP and VAT apply*)

495

**A massive lapis lazuli  
freeform**

Afghanistan

66cm hig by 24cm by  
31cm

£10,000-15,000



For details of our buyers premium which is added onto the hammer price together with any other applicable charges please refer to our guide for prospective buyers



496

**A massive Campo di Cielo meteorite piece**

70kg, 60cm by 27cm by 25cm

The Campo del Cielo refers to a group of iron meteorites or to the area where they were found situated on the border between the provinces of Chaco and Santiago del Estero, 1,000 kilometers northwest of Buenos Aires, Argentina.

In 1576, the governor of a province in Northern Argentina commissioned the military to search for a huge mass of iron, which he had heard that Natives used for their weapons. The Natives claimed that the mass had fallen from the sky in a place they called Piguem Nonralta which the Spanish translated as Campo del Cielo ("Field of the Sky"). The expedition found a large mass of metal protruding out of the soil. They assumed it was an iron mine and brought back a few samples, which were described as being of unusual purity. The governor documented the expedition and deposited the report in the Archivo General de Indias in Seville but it was quickly forgotten and later reports on that area merely repeated the Native legends.

£20,000-30,000

Online bidding via SummersPlace Live - register through [www.summersplaceauctions.com](http://www.summersplaceauctions.com)  
No surcharge (*normal BP and VAT apply*)





**Sp**  
**SUMMERS PLACE**  
**AUCTIONS**



THE WALLED GARDEN  
SUMMERS PLACE  
BILLINGSHURST  
WEST SUSSEX  
RH14 9AB  
+44(0)1403 331 331

**[www.summersplaceauctions.com](http://www.summersplaceauctions.com)**