

# Summers Place Auctions Ltd



## GARDEN & NATURAL HISTORY

27th & 28th September 2022

# Sp

## SUMMERS PLACE AUCTIONS

**Live Auction (Lots 1-70)**

**Tuesday 27th Sept 2022 at 13.00 BST**

**Sealed Bid Auction (Lots 100-430)**

**Bids must be with us by 16.00 BST  
Wed 28th September**

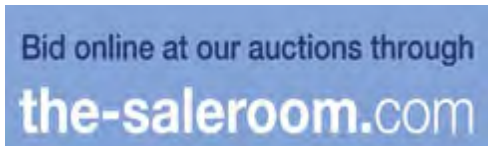
**Visit our website for additional  
images and videos of many of the Lots  
Viewing By appointment only**



**Bid online at Summers Place Live**

**No surcharge (*normal BP & VAT apply*)**

**Register through our website**



**Please note there is a 5% surcharge for using  
the sale-room bidding facility**

## **SPECIALISTS AND AUCTION ENQUIRIES**

**Rupert van der Werff**

**Specialist**

+44 (0)1403 331 333

rupert.werff@summersplaceauctions.com

**James Rylands**

**Garden Statuary Specialist**

+44(0)1403 331 334

james.rylands@summersplaceauctions.com

**Errol Fuller**

**Curator for Natural History**

errol.fuller@summersplaceauctions.com

### **Administrators/Accounts/Shipping**

**Kate Diment**

+44(0)1403 331 335

kate.diment@summersplaceauctions.com

**Angela Marshall**

+44(0)1403 331 337

angela.marshall@summersplaceauctions.com

**Main office**

+44 (0)1403 331 331

**www.summersplaceauctions.com**

1

**A rare Georgian dated carved stone trough**

initialled *J R* and dated *1752*

54cm high by 116cm long by 72cm deep

It is extremely rare to find a dated stone trough.

£1,500-2,000



For details of our buyers premium which is added onto the hammer price together with any other applicable charges please refer to our guide for prospective buyers





2

**A lead figure of a putto holding a bunch of grapes**

18th century  
with restorations  
on stone base  
77cm high

£1,500-2,500

3

**A fine and rare lead figure of a mower by John Cheere**

mid 18th century  
135cm high

Provenance: Christies sale of The collection of Professor Sir Albert Richardson P.R.A, 19th October

Professor Sir Albert Richardson P.R.A (1880-1964). President of Royal Academy (1954-1956). His 20th Century contribution to architecture is well documented.

Following Sir Albert's death in 1964 his home Avenue House, Ampthill Bedfordshire was preserved in its entirety by the family for almost half a century, until its sale finally in 2013. This reluctantly followed a seven year failed negotiation with the National Trust to keep house and its entire collection intact for the nation.

Apollo Magazine Sept 2013: <https://www.apollo-magazine.com/avenue-house>

After entering Ampthill House in 1919 Sir Albert went on to acquire artefacts over the next 40 years. An admirer of the Georgian era to the extent of refusing to have electric light installed to the house.

During the 18th Century, masked balls or fête champêtres set in Arcadian settings of country houses or in London's Ranelagh and Vauxhall





pleasure gardens, were immensely popular. These were attended by fashionable society dressed as milkmaids, fruit and flower girls or in the costume of the *commedia dell'arte*. This fascination with Arcadia was reflected in many art forms - for instance porcelain figures, but also in lead statuary in which numerous models were produced often of shepherds and shepherdesses as well as mowers and haymakers. Unlike porcelain however, the depredations of the weather and the intrinsic value of the material have resulted in very few period lead figures from the 18th century surviving. Several examples of such statues are discernible in the anonymous paintings of the Pavilion at Wrest Park. Indeed, one of these figures appears to have been popular during Cheere's era for it can be associated with the "mowers whetting their scythes" recorded by J.T. Smith during a visit to Cheere's lead yard. An extant example of what must be the same model illustrated at Wrest and manufactured by Cheere survives at Bicton Park in Devon.

£15,000-20,000



For details of our buyers premium which is added onto the hammer price together with any other applicable charges please refer to our guide for prospective buyers

†A lead cistern fountain removed from Chris Beardshaw's gold medal winning garden at the Chelsea Flower Show 2022

modern

with fountain spout, plumbed for water

110cm high by 107cm wide by 55cm deep

Many will know Chris from his long broadcasting career, which began in 1997 and includes BBC2 television hit series such as *Gardeners' World*, *Hidden Gardens* and the hugely popular *The Flying Gardener*, amongst many others.

Chris is a hugely popular garden designer, having produced award-winning schemes at all RHS shows as well as many international flower and garden shows. Chris Beardshaw Design has collected over 35 awards including 13 RHS Gold medals many RHS 'Best in Show' awards and a growing number of prestigious international accolades.

This lead cistern fountain formed part of Chris's gold medal winning show garden for the RNLI at the 2022 Chelsea Flower Show.

£3,500-5,000



Online bidding via SummersPlace Live - register through [www.summersplaceauctions.com](http://www.summersplaceauctions.com)  
No surcharge (*normal BP and VAT apply*)

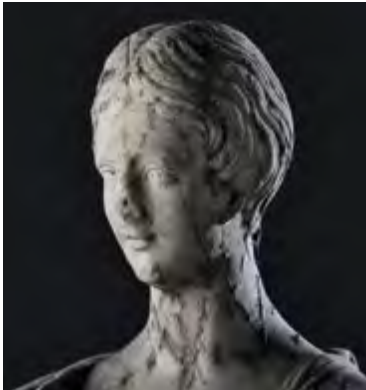
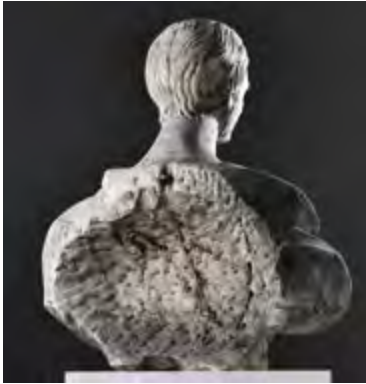
5

**A carved white marble  
bust of a woman**

Italian, 18th century

65cm high

£2,000-3,000



For details of our buyers premium which is added onto the hammer price together with any other applicable charges please refer to our guide for prospective buyers



6

**After the antique: A  
carved alabaster figure of  
the crouching Venus**

19th century

52cm high

£1,200-1,800



Online bidding via SummersPlace Live - register through [www.summersplaceauctions.com](http://www.summersplaceauctions.com)  
No surcharge (*normal BP and VAT apply*)

**A carved white marble portrait bust of  
Nicolas Copernicus**

18th century

inscribed *Nicolo Copernico, Filosofo*

68cm high by 43cm wide

Nicolas Copernicus (19 February 1473 – 24 May 1543) was a Renaissance polymath, active as a mathematician, astronomer, and Catholic canon, who formulated a model of the universe that placed the Sun rather than Earth at its centre. In all likelihood, Copernicus developed his model independently of Aristarchus of Samos, an ancient Greek astronomer who had formulated such a model some eighteen centuries earlier.

The publication of Copernicus's model in his book *De revolutionibus orbium coelestium* (On the Revolutions of the Celestial Spheres), just before his death in 1543, was a major event in the history of science, triggering the Copernican Revolution and making a pioneering contribution to the Scientific Revolution.

Copernicus was born and died in Royal Prussia, a region that had been part of the Kingdom of Poland since 1466. A polyglot and polymath, he obtained a doctorate in canon law and was a mathematician, astronomer, physician, classics scholar, translator, governor, diplomat, and economist. From 1497 he was a Warmian Cathedral chapter canon. In 1517 he derived a quantity theory of money—a key concept in economics—and in 1519 he formulated an economic principle that later came to be called Gresham's law.

£4,000-6,000



For details of our buyers premium which is added onto the hammer price together with any other applicable charges please refer to our guide for prospective buyers



8

**A pair of carved white marble urns**

late 19th century  
63cm high by 54cm  
diameter

£2,000-4,000

10

**A similar pair of carved white marble urns**

late 19th century  
62cm and 61cm high by  
47cm diameter

£2,000-4,000

9

**A similar pair of carved white marble urns**

late 19th century  
62cm high by 50cm  
diameter

£2,000-4,000





11

**A similar pair of carved white marble urns**

late 19th century

63cm and 64cm high by 50cm diameter

£2,000-4,000



12

**A similar pair of carved white marble urns**

late 19th century

70cm high by 56cm diameter

£2,000-4,000



13

**A similar pair of carved white marble urns**

late 19th century

65cm high by 50cm diameter

£2,000-4,000

For details of our buyers premium which is added onto the hammer price together with any other applicable charges please refer to our guide for prospective buyers



14

**A similar pair of carved white marble urns**

late 19th century  
73cm high by 54cm  
diameter

£2,000-4,000



15

**A similar single carved white marble urn**

late 19th century  
59cm high by 40cm  
diameter

£500-800



16

**Holme Cardwell**

A carved white  
marble group of a classical  
shepherd youth Rome  
mid 19th century

signed *Holme Cardwell*  
*Fecit, Roma* and  
indistinctly dated on later  
stone rectangular plinth  
the figure 116cm high  
the plinth 77cm high by  
71cm wide by 48cm deep

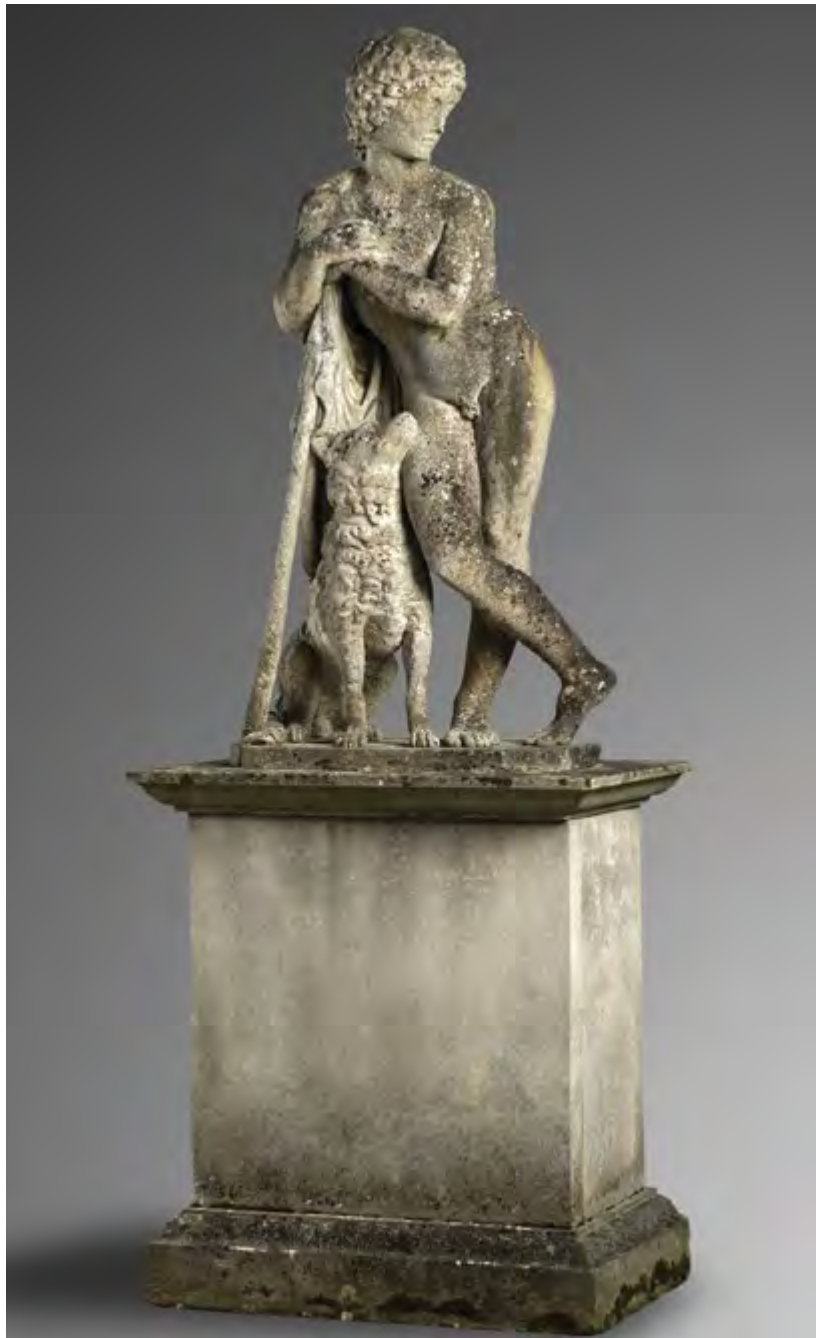
Provenance; The residual  
contents of Bixley  
Manor by instructions of  
the executors of Sir  
Timothy Colman KG.

Holme Cardwell, a native  
of Manchester, attended  
the Royal Academy School  
in London in 1834.  
Probably aged 19 (although

there is some uncertainty over his year of birth, his gravestone registers 20 May 1813), he was recommended to the school by Sir Francis Chantrey RA. Building a considerable reputation for himself, including a silver medal for a model in 1839, he left London for Paris in 1841 to study with David d'Angers (1788-1856). He probably stayed in Paris for three years, training at the Académie Royale, before moving to Rome. In the following years of his career, he was to move between Rome and London several times, settling primarily in Rome. Active within the milieu of British expatriate artists and sculptors in Rome, he acquired many admirers, including the renowned sculptor John Gibson RA (1790-1866). Cardwell exhibited at the Royal Academy between 1837 and 1856. He had a tendency for large or monumental marble groups, including the 'colossal' Good Samaritan (Roscoe, op. cit., p. 194), a figure of Sabrina, and a Cupid and Pan.

The treatment of this neoclassical youth shows similarities to John Gibson, who was an admirer of Cardwell's work and Joseph Gott, 1785-1860 both of whom were similarly working in Rome in the mid 19th century executing commissions for English aristocracy doing the Grand Tour. Joseph Gott in particular, was renowned for his realistic portrayal of dogs, most especially whippets and greyhounds, which he often incorporated into classical groups as in this charming composition in which an Arcadian shepherd leans languorously on a staff with a dog gazing wistfully up at his master.

£15,000-25,000



For details of our buyers premium which is added onto the hammer price together with any other applicable charges please refer to our guide for prospective buyers





17

**A pair of carved white  
marble urns**

Italian, late 19th century  
on carved limestone pedestals  
101cm high, 162cm high  
overall

£15,000-20,000

18

**A carved white marble  
crouching faun**

Italian, circa 1870  
79cm high

Provenance: Sotheby's,  
21st November 2000, lot  
185

£3,000-5,000



For details of our buyers premium which is added onto the hammer price together with any other applicable charges please refer to our guide for prospective buyers

## **Workshop of Bertel Thorvaldsen: An impressive and important suite of three carved white marble plaques**

Rome

probably 1830's in bronze frames

The Three Angels 50cm high by 55cm wide

The pair of Mercury entrusting the infant Bacchus to Ino and Venus comforting Cupid stung by a bee, 49cm high by 50cm wide

Bertel Thorvaldsen, Thorvaldsen also spelled Thorwaldsen, 19th Nov., 1770, - 24th March 1844, was a sculptor, prominent in the Neoclassical period, who was the first internationally acclaimed Danish artist. Prominent in Roman intellectual and artistic circles, he influenced many emerging artists from Europe and the United States.

The son of an Icelandic wood-carver who had settled in Denmark, he studied at the Copenhagen Academy and won a travelling scholarship to Rome, where he was to live most of his life. In Italy the prevailing enthusiasm for classical sculpture fired his imagination so much that he later celebrated the date of his arrival in 1797 as his "Roman birthday."

The success of Thorvaldsen's model for a statue of Jason (1803) attracted the attention of the Italian sculptor Antonio Canova and launched Thorvaldsen on one of the most successful careers of the 19th century. In Rome, Thorvaldsen made a name for himself as a sculptor. Maintaining a large workshop in the city, he worked in a heroic neoclassicist style. His patrons resided all over Europe. When he returned to visit Copenhagen in 1819, his progress through Europe, in Berlin, Warsaw, and Vienna, was like a triumphal procession. His return from Rome in 1838, when he eventually decided to settle in Copenhagen, was regarded as a national event in Danish history. A large portion of his fortune went to the endowment of a Neoclassical museum in Copenhagen (begun in 1839), designed to house his collection of works of art, the models for all his sculptures; by his own wish, Thorvaldsen was to be buried there.

As with this impressive suite of marble plaques, most of Thorvaldsen's characteristic sculptures are

Online bidding via SummersPlace Live - register through [www.summersplaceauctions.com](http://www.summersplaceauctions.com)  
No surcharge (*normal BP and VAT apply*)

reinterpretations of the figures or themes of classical antiquity. The Alexander frieze of 1812 in the Palazzo del Quirinale, Rome, modelled in only three months in anticipation of a visit by Napoleon, is an example of the feverish energy with which he could at times work. Religious sculptures include the colossal series of statues of Christ and the Twelve Apostles (1821–27) in the Vor Frue Kirke in Copenhagen. He also made numerous portrait busts of distinguished contemporaries.

### **MERCURY ENTRUSTS THE INFANT BACCHUS TO INO**

Bacchus was the result of a relationship between Jupiter and Semele, but Jupiter's wife discovered what was going on and brought about the death of Semele. So Jupiter asked Mercury with the winged hat to give Bacchus's child to Semele's sister Ino so that she could look after him. Thorvaldsen executed the original plaster model in Rome in 1809.

A similar larger plaster executed in 1809–11 is in the Thorvaldsen Museum, Inventory No. 346 with another plaster example the same size as this marble example no 347. Another carved marble example executed posthumously in 1889 also in the Thorvaldsen Museum, Copenhagen, Inventory No 796.

### **VENUS COMFORTS CUPID STUNG BY A BEE**





For details of our buyers premium which is added onto the hammer price together with any other applicable charges please refer to our guide for prospective buyers



The motif is taken from a poem by Anacreon describing how Cupid one day is stung by a bee as he makes to pick a rose, upon which he runs home crying to his mother for comfort. Meanwhile, she merely asks, "If the bee sting hurts you so much, how much do you think those people suffer who are struck by your arrow?"

There are three versions of this plaque in the Thorvaldsen Museum, Copenhagen, all dated no earlier than 1809, of which two are plaster, inventory No.'s A780 and A418 however, this model is most similar in treatment to Inventory No. 417, also executed in marble.

#### THE THREE ANGELS

Online bidding via SummersPlace Live - register through [www.summersplaceauctions.com](http://www.summersplaceauctions.com)  
No surcharge (*normal BP and VAT apply*)

The plaque of the three angels, especially the angel on the left, bears similarities to the plaster model *Hovering Angels*, executed in 1833, Inventory No. A590 and the *Genii of Music Singing*, Inventory No. 586, also executed in 1833.

It is logical to assume that these three plaques would have been carved as a suite at the same time and as such, must date at the earliest, to when the last of the three can be dated which would seem to be the *Three Angels* or the *Genii of Music singing*, both of which date to the 1830's.

Thorvaldsen maintained a large workshop in Rome making copies of his works, often from plaster originals for wealthy clients doing the Grand Tour. The exquisite



quality of the carving in these examples would suggest a date during Thorvaldsen's lifetime rather than posthumously when the quality diminished as the 19th century progressed.

Literature:

Ludvig Müller: Fortegnelse over Thorvaldsens Værker i Thorvaldsens Museum (A), 1848, 347

Nanna Kronberg Frederiksen, Hjemsendelse af Thorvaldsens kunst 1825, 2013

19.7.1811 from Christian Daniel Rauch to Caroline von Humboldt

Laila Skjøthaug: Catalogue of Bertel Thorvaldsen's Works, Bertel Thorvaldsen (1770-1844), 2015, ,116a

For details of our buyers premium which is added onto the hammer price together with any other applicable charges please refer to our guide for prospective buyers

&117a

Stig Miss: Thorvaldsens Tegninger, 2021, p. 166 and 192-195

Elena di majo, BjBertel Thorvaldsen 1770-1844 scultore danese a Roma, p146

Stefano Grandesso Bertel Thorvaldsen Catalogo delle opere

£20,000- £40,000





20

**Pietro Bazzanti**

**A carved white marble figure of a Neapolitan fisher boy on white marble pedestal**

late 19th century

signed *P Bazzanti, Florence*

figure 105cm high;

pedestal 76cm high

Pietro Bazzanti 1825-1895, was one of a family of sculptors working in Florence during the 19th century, selling largely to rich patron doing the Grand tour. His workshop latterly became the Gallery Bazzanti based in Florence

£5,000-8,000

Online bidding via SummersPlace Live - register through [www.summersplaceauctions.com](http://www.summersplaceauctions.com)  
No surcharge (*normal BP and VAT apply*)

21

**A pair of carved white  
marble urns on pedestals**

20th century

152cm high

£5,000-8,000



For details of our buyers premium which is added onto the hammer price together with any other applicable charges please refer to our guide for prospective buyers





22

**A carved white marble  
bowl on stand**

Italian

19th century

80cm high by 61cm  
diameter

£3,000-5,000

Online bidding via SummersPlace Live - register through [www.summersplaceauctions.com](http://www.summersplaceauctions.com)  
No surcharge (*normal BP and VAT apply*)





23

**A pair of shallow marble  
bowls**

18th century or earlier  
one bearing old Hampel  
auction house label  
22cm high by 50cm  
diameter

£800-1,200

For details of our buyers premium which is added onto the hammer price together with any other applicable charges please refer to our guide for prospective buyers

24

**Professor Fortunato Galli, 1830-1918**

**'Fare Insegna Fare'**  
(Practice Makes Perfect)

circa 1900

Carrara marble

signed and inscribed

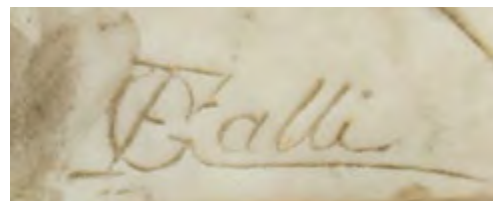
82cm high by 38cm wide by 40cm deep

Born in Livorno, Professor Fortunato Galli (d.1918) spent most of his working life in Florence, where much of his output was sculpture for many of the major Tuscan churches, including his principal work, the statue of Pope Gregory VII for the Duomo in Florence. His decorative, commercial works concentrated on popular subjects and themes of the day, such as Mignon, heroine of Ambroise Thomas' 1866 opera, Carmen.

In this sculpture Galli has depicted a young girl practising her skills at needlepoint. Alphabet and numbers were often sewn in ordered sequence and this activity was used as part of the educational process. Needlepoint was also a fashionable late nineteenth century craze where biography and interests could be recorded, framed and hung in the home.

The sculpture is a metaphor for the weaving of life. The future outcome of an individual is determined by discipline and knowledge learned and laid down in formative years.

£4,000-6,000



Online bidding via SummersPlace Live - register through [www.summersplaceauctions.com](http://www.summersplaceauctions.com)  
No surcharge (*normal BP and VAT apply*)



25

**A Roman style mosaic and marble circular table top  
on Sienna marble column pedestal**

**18th/19th Century**

made up possibly using ancient tesserae

133cm diameter

£2,000-3,000

For details of our buyers premium which is added onto the hammer price together with any other applicable charges please refer to our guide for prospective buyers





26

**A monumental carved  
stone stone dragon**

on associated base

240cm high by 196cm long  
overall

This powerful piece was  
carved in the last 20 years  
and was on display at the  
Forest of Dean Heritage  
Centre.

£10,000-15,000

Online bidding via SummersPlace Live - register through [www.summersplaceauctions.com](http://www.summersplaceauctions.com)  
No surcharge (*normal BP and VAT apply*)

27

**A carved granite Kasuge lantern**

Japanese

Meiji period

180cm high by 55cm square

£2,000-4,000



For details of our buyers premium which is added onto the hammer price together with any other applicable charges please refer to our guide for prospective buyers



**A pair of Val d' Osne foundry cast iron urns**

last quarter 19th century Stamped Val d'Osne

the Urns 49cm high, 47cm wide, 40cm deep on on faux marble painted wooden pedestals 81cm high, 41cm square

Founded by J.P.Andre in 1835 and based at the Val d'Osne, in the Haute-Marne, the company took over rival firms such as Barbezat and Ducel becoming the largest and most prolific foundry of decorative and sculptural cast iron in France. The company exhibited at the Great Exhibitions of 1851 and 1862 as well as the Chicago Great Exhibition of 1893. This model is illustrated in the Val d'Osne foundry catalogue. Plate 500, No 250 (*See engraving*)

£2,500-4,000



Online bidding via SummersPlace Live - register through [www.summersplaceauctions.com](http://www.summersplaceauctions.com)  
No surcharge (*normal BP and VAT apply*)



29

**A rare Ducel foundry cast iron seat**

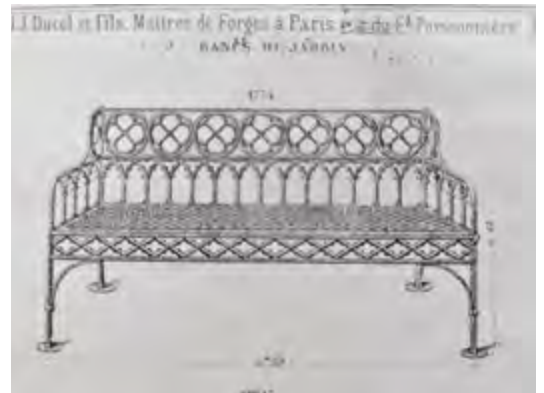
mid 19th century

the front apron stamped  
*Ducel Fils, Rue des A\*\*\*r,*  
*Paris, facit*  
156cm long

A similar seat is illustrated  
in the catalogue of the  
Societe Anonyme des  
Hauts-Fourneaux & du  
ValD'Osne Fonderies circa  
1900, (see engraving).

The firm of J.J. Ducel  
was started in 1810 at  
Poce in the Pas- de-  
Calais. One of the leading  
manufacturers specializing  
in architectural fittings as  
well as urns and statues.  
Following the death of  
Monsieur Ducel in 1878  
the Val d'Osne foundry  
purchased the firm's  
patterns. Unlike the  
English foundries such  
as Coalbrookdale, the  
French foundries produced  
very few patterns of  
outdoor seat furniture.  
This variation of the more  
common gothic pattern  
seat makes this a rare  
example

£1,200-1,800



For details of our buyers premium which is added onto the hammer price together with any other applicable charges please refer to our guide for prospective buyers



30

**A Coalbrookdale Fern and Blackberry pattern cast iron seat**

circa 1870

maker's marks possibly obscured by paint

153cm long

£1,200-1,800

31

**A pair of Coalbrookdale cast iron Fern and Blackberry chairs**

circa 1870

makers marks possibly obscured by paint

£800-1,200

32

**A pair of Coalbrookdale Fern and Blackberry pattern cast iron chairs**

last quarter of 19th century

each back with diamond registration stamp and number

£1,000-1,500







33

**A similar pair of  
Coalbrookdale Fern and  
Blackberry pattern cast  
iron chairs**

last quarter of 19th  
century

each back with diamond  
registration stamp and  
number foundry marks  
possibly obscured by paint

£1,000-1,500



For details of our buyers premium which is added onto the hammer price together with any other applicable charges please refer to our guide for prospective buyers



34

**A rare Coalbrookdale  
passion flower pattern  
cast iron seat**

circa 1870

with registration stamp  
others possibly obscured  
by paint  
107cm long

This design is registered in  
the 1875 Coalbrookdale  
catalogue Section III page  
263

*See engraving*

£3,000-5,000



Online bidding via SummersPlace Live - register through [www.summersplaceauctions.com](http://www.summersplaceauctions.com)  
No surcharge (*normal BP and VAT apply*)



35

**An extremely rare  
Coalbrookdale  
Midsummer Night's  
Dream pattern cast iron  
seat**

circa 1870

fully stamped 'CB Dale  
Co.' and with pattern  
and registration numbers  
164cm long

This extremely rare  
Coalbrookdale pattern,  
now sadly missing its  
scroll cresting is registered  
in the 1875 Coalbrookdale  
catalogue, section III, no  
42. (See engraving)

The central panel in the  
back depicts the moment  
when King Oberon's  
servant fairy Puck squeezes  
the juice from a magical  
plant into the eyes of  
Queen Titania, making her  
fall in love with the first  
person she sees when she  
awake which turns out to  
be Bottom, whose head  
has been transformed into  
that of an ass.

£1,500-2,500



For details of our buyers premium which is added onto the hammer price together with any other applicable charges please refer to our guide for prospective buyers



36

**A Coalbrookdale hall stand**

stamped *Coalbrookdale* each section with diamond registration

203cm high by 76cm wide by 35cm deep

£1,200-1,800

Online bidding via SummersPlace Live - register through [www.summersplaceauctions.com](http://www.summersplaceauctions.com)  
No surcharge (*normal BP and VAT apply*)



37

**A pair of Handyside foundry cast iron urns**

2nd half 19th century

78cm high

£1,000-1,500

For details of our buyers premium which is added onto the hammer price together with any other applicable charges please refer to our guide for prospective buyers





38

**A strap work wrought iron games seat**

19th century  
incorporating wheels at one end and hinged footrest  
153cm long

Seats such as this example were wheeled around Victorian gardens for ladies to sit on whilst watching whatever sport was being played. The footrest prevented crinoline skirts from getting wet.

£1,000-1,500

Online bidding via SummersPlace Live - register through [www.summersplaceauctions.com](http://www.summersplaceauctions.com)  
No surcharge (*normal BP and VAT apply*)



39

**A reeded wrought iron seat**

19th century

160cm long

£1,000-1,500

For details of our buyers premium which is added onto the hammer price together with any other applicable charges please refer to our guide for prospective buyers





40

**A substantial pair of  
stoneware lidded urns**

circa 1870

137cm high by 58cm wide

£2,500-4,000

Online bidding via SummersPlace Live - register through [www.summersplaceauctions.com](http://www.summersplaceauctions.com)  
No surcharge (*normal BP and VAT apply*)



41

**An unusual carved stone seat**

circa 1900

101cm long

£1,000-1,500

42

**A similar unusual carved stone seat**

circa 1900

101cm long

£1,000-1,500



For details of our buyers premium which is added onto the hammer price together with any other applicable charges please refer to our guide for prospective buyers



43

### ▲ Alexandra Beale

**An impressive bronze fountain figure of Ondine in a tiered zinc pool surround designed by R.K. Alliston, removed from the RAC club, Pall Mall, London**

270cm high overall, 190cm square base

This fountain was commissioned and installed in 2008. Sculptor Alexandra Beale's work ranges from full size statuary and garden water features to portrait heads and composition pieces for interiors.

She has exhibited widely in London and the South of England including many of the National Garden events as well as many of the country's prestigious garden shows including Chelsea, Hampton Court, Stansted, West Dean, Parham and The Old Town Hall Chelsea.

Ondine (also known as "Undine"), a mythological figure of European tradition, was a water nymph or sprite who could become human only when she fell in love with a mortal man. However, if the mortal was unfaithful to her, he was destined to forfeit his life.

The Royal Automobile Club on London's historic Pall Mall was designed and built by the fashionable architects Charles Mewès and Arthur Davis. They had already been lauded for the recently constructed Ritz hotels in Paris and London, and the interiors of some of the great ocean-going liners of the day. Opened in 1911 at the huge cost of £330,000, it has remained an iconic institution ever since. This fountain was removed in recently prior to remodeling of the courtyard gardens and represents a unique opportunity to acquire a stunning artwork from one of London's best loved clubs.

*See video on our website of working fountain*

£5,000-£8,000

44

**Horace Montford**

A song to Demeter

Bronze

Signed H Montford, sc.

72cm high

For more information  
on this piece and Horace  
Montford, please see our  
website

£1,000- £1,500



For details of our buyers premium which is added onto the hammer price together with any other applicable charges please refer to our guide for prospective buyers



**Eneri Prosperi: An Henri studio life bronze of children standing on a tree trunk**

1970s

stamped *Bronze Elite by Henri* weathered green patination  
230cm high

Eneri Prosperi was born in Bagni di Lucca in Tuscany in 1910 and later emigrated to America, where he founded the Henri Studio in Chicago. Specialising in both composition stone and bronze, they produced a range of garden sculpture. He died in 1990.

£6,000-10,000



Online bidding via SummersPlace Live - register through [www.summersplaceauctions.com](http://www.summersplaceauctions.com)  
No surcharge (*normal BP and VAT apply*)

46

**Eneri Prosperi:  
A Henri studio  
bronze group of  
two children on a  
working seesaw**

*Stamped Bronze Elite  
by Henri*

180cm long 155cm  
high

£3,000-5,000



47

**Eneri Prosperi:  
An Henri Studio  
bronze group of  
children playing  
inside pipe  
sections**

*Stamped Bronze Elite  
by Henri*

100cm high by  
175cm long

£6,000-10,000



For details of our buyers premium which is added onto the hammer price together with any other applicable charges please refer to our guide for prospective buyers





48

**Two bronzes of children  
on stepping stones**

stamped *Leonardo Rossi* the  
larger 137cm high

Although the identity  
of Leonardo Rossi is  
unknown it is likely to  
be the pseudonym for a  
foundry copying other  
studio's work, these  
appear to have been cast  
20-30 years and are of a  
similar quality to another  
identical group of 5  
children sold by us on  
12th March 2019, lot 25.

£3,000-5,000



49

**A bronze group of two boys playing acrobats**

2nd half 20th century

indistinctly signed and  
with foundry stamp

244cm high

£5,000-8,000



For details of our buyers premium which is added onto the hammer price together with any other applicable charges please refer to our guide for prospective buyers



50

**A bronze fountain**

20th century  
with two cranes on a branch in bulrushes, mouths and  
bulrushes plumbed for water  
214cm high  
£4,000-6,000



51

**A bronze fountain group of three cranes**

signed *T Canpiola*  
137cm high  
£6,000-10,000

Online bidding via SummersPlace Live - register through [www.summersplaceauctions.com](http://www.summersplaceauctions.com)  
No surcharge (*normal BP and VAT apply*)



▲Jean Phillipe Richard (ARR applies)

Draped female bronze signed *Richard* and dated '02 and numbered *III/IV* together with indistinct foundry stamp on stone base

190cm high overall, the bronze 172cm high

Jean-Philippe Richard is a French sculptor, born in Paris in 1947 and has been working as a sculptor for over 3 decades. A self-taught artist, Jean-Philippe Richard sculpts without relying on a model, this allows him to sculpt freely and even get away from the restrictions of reality. This artist is an accomplished technician whose first bronze pieces were cast in an artisan foundry that he created in the Provencal village where he has been living since mid-70s.

£4,000-£6,000



For details of our buyers premium which is added onto the hammer price together with any other applicable charges please refer to our guide for prospective buyers



53

**A massive pair of polished *Lytoceras*  
ammonite halves**

Madagascan, Jurassic

118cm wide

£5,000-7,000



Online bidding via SummersPlace Live - register through [www.summersplaceauctions.com](http://www.summersplaceauctions.com)  
No surcharge (*normal BP and VAT apply*)



For details of our buyers premium which is added onto the hammer price together with any other applicable charges please refer to our guide for prospective buyers





54

**Iguanodon tail vertebrae**

Isle of Wight (Dinosaur  
Isle)

80cm long

Iguanodon was one of  
the first dinosaurs to be  
described in the early 19th  
century

£6,800-7,500



55

**A Siphocrynites crynoid  
plate**

Morocco

Devonian period, 360  
million years

42cm high

£450-600





56

**Speetoniceras ammonite**

Russia, Volgar river., Upper  
Jurassic, 140 millions years

31cm wide

£750-1,000

57

**An Orthoceras spear**

Morocco Devonian

190cm high overall

£1,000-1,500



For details of our buyers premium which is added onto the hammer price together with any other applicable charges please refer to our guide for prospective buyers



58

**A large fossil wood slice**

Arizona, USA, Triassic period, 220 million years

78cm by 60cm

£6,600-7,000

Online bidding via SummersPlace Live - register through [www.summersplaceauctions.com](http://www.summersplaceauctions.com)  
No surcharge (*normal BP and VAT apply*)



59

**A fossilised wood freeform**

Madagascar

Triassic

27cm high

£300-500



60

**A fossilised Fresh water turtle shell**

Stylemis, Oligocene period, 35 million years,  
South Dakota

30cm long

£750-1,000



61

**A Rose amethyst half moon**

31cm wide

£300-500

For details of our buyers premium which is added onto the hammer price together with any other applicable charges please refer to our guide for prospective buyers



62

**A large Red Jasper bowl**

Southern Africa

56cm by 42cm

£950-1,200



63

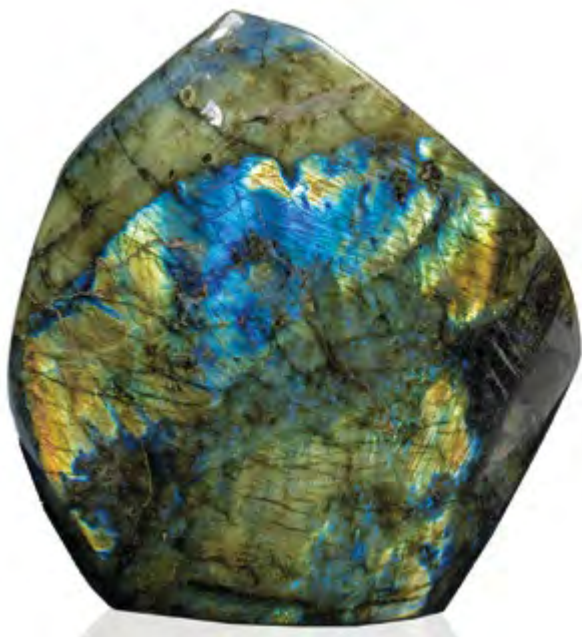
**A zebra onyx bowl**

Mexican

33cm wide

£1,000-1,500





64

**A labradorite freeform**

Madagascar

25cm high

£400-600



65

**A lapis lazuli  
freeform**

Afghanistan

55cm high by 31cm  
wide 68.8KG

£7,000-8,000

For details of our buyers premium which is added onto the hammer price together with any other applicable charges please refer to our guide for prospective buyers



66

**A turquoise veneered wood box**

20cm by 14cm by 4cm

£4,000-5,000

Online bidding via SummersPlace Live - register through [www.summersplaceauctions.com](http://www.summersplaceauctions.com)  
No surcharge (*normal BP and VAT apply*)





67

**A petrified wood veneered box**

Washington, USA

13.5cm by 12cm by 4cm

£3,000-4,000

For details of our buyers premium which is added onto the hammer price together with any other applicable charges please refer to our guide for prospective buyers



68

**A charoite veneered box**

18cm by 11cm by 4cm

£3,000-4,000

Online bidding via SummersPlace Live - register through [www.summersplaceauctions.com](http://www.summersplaceauctions.com)  
No surcharge (*normal BP and VAT apply*)

69

**A Scarlet Ibis**

modern 63cm high

£600-800



For details of our buyers premium which is added onto the hammer price together with any other applicable charges please refer to our guide for prospective buyers





70

**A Hyacinth Macaw**

late 19th/early 20th  
century  
later recased

67cm high by 56cm

£1,200-1,800

Online bidding via SummersPlace Live - register through [www.summersplaceauctions.com](http://www.summersplaceauctions.com)  
No surcharge (*normal BP and VAT apply*)

## GLOSSARY OF TERMS

The following are examples of the terminology used in this catalogue. Any statement as to authorship, attribution, origin, date, age provenance and condition is a statement of opinion and is not to be taken as a statement of fact.

Please read carefully the terms of the Authenticity Guarantee and the Conditions of Business for Buyers set out in this catalogue.

### *Antonio Canova*

In our opinion a work by the artist. In the case of 19th century sculpture this indicates that the work was made in our opinion either by the artist or by a foundry or editor who had the rights to reproduce the artist's original model either during the artist's lifetime or for a defined posthumous period. (When the artist's forenames are not known, a series of asterisks, followed by the surname of the artist, whether preceded by an initial or not indicates that in our opinion the work is by the artist named).

### *Attributed to Antonio Canova*

In our opinion probably a work by the artist but less certainty as to authorship is expressed than in the preceding category.

### *Manner of Antonio Canova*

In our opinion a work in the style of the artist and of a later date

### *After Antonio Canova*

In our opinion a copy at a later date of a known work by the artist. In the 19th century this indicates that in our opinion the work was made by a foundry or editor at a later date and apparently without exclusive rights.

### *Italian 18th century*

In our opinion a work from that region and of that date.

### *Probably Italian 18th century*

In our opinion a work that is likely to be from that region and/or of that date but less certainty as to the region and/or date than is expressed in the preceding category.

### *In renaissance style*

In our opinion a work executed in the style of the renaissance but not necessarily of that period.

The term signed and/or dated and/or inscribed means that in our opinion the signature and/or date and/or inscription are original to the model or authorized by the sculptor's studio or editor but not necessarily from the hand of the artist.

The term bearing the signature and/or date and/or inscription means that in our opinion the signature and/or date and/or inscription have been added at a later date.

Dimensions are given height before width

### *Condition of lots*

Condition is only noted in the catalogue where an item is severely distressed. Prospective purchasers making commission bids without viewing the sale can be given condition reports on any lot on request.

It is essential for buyers to satisfy themselves as to the condition of lots prior to the sale and to arrange their own insurance cover against loss and damage immediately after the sale. Please refer to the Conditions of Business for Buyers.

## SUMMERS PLACE AUCTIONS AUTHENTICITY GUARANTEE

If Summers Place Auctions Ltd sells an item which subsequently is shown to be a “counterfeit”, subject to the terms below Summers Place Auctions Ltd will set aside the sale and refund to the Buyer the total amount paid by the Buyer to Summers Place Auctions Ltd for the item, in the currency of the original sale.

For these purposes, “counterfeit” means a lot that in Summers Place Auctions Ltd reasonable opinion is an imitation created to deceive as to authorship, origin, date, age, period, culture or source, where the correct description of such matters is not reflected by the description in the catalogue (taking into account any Glossary of Terms). No lot shall be considered a counterfeit by reason only of any damage and/or restoration and/or modification work of any kind (including repainting or over-painting).

Please note that this Guarantee does not apply if either:-

- (i) the catalogue description was in accordance with the generally accepted opinion(s) of scholar(s) and expert(s) at the date of the sale, or the catalogue description indicated that there was a conflict of such opinions; or
- (ii) the only method of establishing at the date of the sale that the item was a counterfeit would have been by means of processes not then generally available or accepted, unreasonably expensive or impractical to use; or likely to have caused damage to the lot or likely (in Summers Place Auctions Ltd reasonable opinion) to have caused loss of value to the lot; or
- (iii) there has been no material loss in value of the lot from its value had it been in accordance with its description.

This Guarantee is provided for a period of five (5) years after the date of the relevant auction, is solely for the benefit of the Buyer and may not be transferred to any third party. To be able to claim under this Guarantee, the Buyer must:-

- (i) notify Summers Place Auctions Ltd in writing within three (3) months of receiving any information that causes the Buyer to question the authenticity or attribution of the item, specifying the lot number, date

of the auction at which it was purchased and the reasons why it is thought to be counterfeit; and

- (ii) return the item to Summers Place Auctions Ltd in the same condition as at the date of sale to the Buyer and be able to transfer good title in the item, free from any third party claims arising after the date of the sale.

Summers Place Auctions Ltd has discretion to waive any of the above requirements. Summers Place Auctions Ltd may require the Buyer to obtain at the Buyer's cost the reports of two independent and recognised experts in the field, mutually acceptable to Summers Place Auctions Ltd and the Buyer. Summers Place Auctions Ltd shall not be bound by any reports produced by the Buyer, and reserves the right to seek additional expert advice at its own expense. In the event Summers Place Auctions Ltd decides to rescind the sale under this Guarantee, it may refund to the Buyer the reasonable costs of up to two mutually approved independent expert reports.

## GUIDE FOR PROSPECTIVE BUYERS

### 1. Buyer's Premium Rates

The buyer's premium payable by the buyer of each lot is at a rate of 25% on the first £250,000, then 20% on the amount by which the hammer price exceeds £250,000, plus an amount in respect of VAT thereon (see below).

### 2. VAT on Hammer Price and Buyer's Premium and VAT Symbols in the Catalogue

#### Property with no VAT symbol

Where there is no VAT symbol, Summers Place Auctions Ltd are able to use the Auctioneer's Margin Scheme and VAT will not normally be charged on the hammer price. Summers Place Auctions Ltd must bear VAT on the buyer's premium and hence will charge an amount in lieu of VAT at 20% on this premium, which will not be shown separately on the invoice.

#### Property with a † symbol

These items will be sold under the normal UK VAT rules and VAT will be charged at 20% on both the hammer price and buyer's premium.



### **Property with a @ symbol**

It is assumed that items sold to buyers whose address is in the European Union (EU) will be remaining in the EU. The property will be invoiced as if it had no VAT symbol.

It is assumed that items sold to buyers whose address is outside the EU, will be exported from the EU. The property will be invoiced under the normal VAT rules (see 'Property with a † symbol above).

### **Property sold with a ‡ or Ω symbol**

These items have been imported from outside the EU to be sold at auction under temporary importation. When Summers Place Auctions Ltd release such property to buyers in the UK, the buyer will become the importer and must pay Summers Place Auctions Ltd import VAT at the following rates on the hammer price:

‡ @ 5% Ω @ 20%

Summers Place Auctions Ltd must bear VAT on the buyer's premium and hence will charge an amount in lieu of VAT at 20% on this premium, which will not be shown separately on the invoice.

### **VAT Refunds**

VAT may be cancelled or refunded on export if strict conditions are met and a fee of £30 plus VAT will be charged for this service. For advice, please contact us on 01403 331 331

### **Sales and Uses Taxes**

Buyers from outside the UK should note that local sales taxes or use taxes may become payable upon import of items following purchase (for example, the Use Tax payable on import of purchased items to certain states of the USA). Buyers should obtain their own advice in this regard.

### **Artist's Resale Right**

Purchase of lots marked with the following symbol ▲ will be subject to payment of the Artist's Resale Right, at a percentage of the hammer price calculated as follows:

Portion of the hammer price (in) Royalty Rate

From 0 to 50,000 4%

From 50,000.01 to 200,000 3%

From 200,000.01 to 350,000 1%

From 350,000.01 to 500,000 0.5%

Exceeding 500,000 0.25%

The Artist's Resale Right payable will be the aggregate of the amounts payable under the above rate bands, subject to a maximum royalty payable of €12,500 for any single work each time it is sold. The maximum royalty payable of €12,500 applies to works sold for €2 million and above. Calculation of the artist's resale right will be based on the Pounds Sterling / Euro reference exchange rate quoted on the date of the sale by the European Central Bank.

### **Property with a ♠ symbol.**

Some of these items require specialist dismantling and may not be available for immediate collection after the sale. Intending purchasers should check the status of these lots before the sale.

## **3. Before the Auction**

### **Pre-sale Estimates**

Pre-sale estimates are intended as a guide for prospective buyers but all lots can realise prices above or below the pre-sale estimates. Seller's confidential reserves are set no higher than the low pre-sale estimates, except in the rare circumstance in which the reserve has been set in a foreign currency and the exchange rate has fluctuated.

It is advisable to consult us nearer the time of sale as estimates can be subject to revision. The estimates printed in the auction catalogue do not include the buyer's premium or VAT.

### **Provenance**

In certain circumstances, Summers Place Auctions Ltd may print in the catalogue the history of ownership of a work of art if such information contributes to scholarship or is otherwise well known and assists in distinguishing the work of art. However, the identity of the seller or previous owners may not be disclosed for a variety of reasons. For example, such information may be excluded to accommodate a seller's request for confidentiality or because the identity of prior owners is unknown given the age of the work of art.

## C.I.T.E.S.

All the relevant lots in this sale have been carefully vetted, mindful of current C.I.T.E.S. regulations, concerning the sale of endangered species. We are happy to provide advice on any lots, to overseas buyers concerning export restrictions. However, it is ultimately the buyers responsibility to satisfy themselves that the correct licenses can be obtained prior to bidding.

### Condition of Lots

All lots are available for inspection and Condition Reports are available on request. However, all lots are of an age and type which means that they may not be in perfect condition and should be viewed by prospective bidders; please refer to Condition 3 of the Conditions of Business for Buyers.

### Electrical and Mechanical Goods

All electrical and mechanical goods are sold on the basis of their artistic and decorative value only, and should not be assumed to be operative. It is essential that any electrical system is checked and approved by a suitably qualified electrician, prior to use.

## 4. The Auction

Auction speeds vary, and generally average between 50 and 120 lots per hour. The auctioneer will commence and advance the bidding at levels and in increments he considers appropriate (generally in increments of approximately 10% of the previous bid) and is entitled to place a bid or series of bids on behalf of the seller up to the reserve on the lots, without indicating he is doing so and whether or not other bids are placed.

Please note Conditions 5 and 6 of the Conditions of Business for Buyers contain additional information on bidding.

### Bidding in Person

To bid at auction you must register with us to obtain a bidding number. Before the auction, fill in the form at the registration desk, provide proof of identity, and you may be given a paddle showing your bidding number. This paddle should be used for bidding. The auctioneer will note this number when you purchase a lot.

### Live Auctions

The auction takes place in the gallery with each lot displayed on a plasma screen as it is sold. Prospective purchasers are encouraged to attend the sale and must register their details with us beforehand. Bidding is by numbered paddle.

### Absentee Bids

If you cannot attend the auction we will be happy to execute written bids on your behalf, so long as you have registered your details with us beforehand. A bidding form may be downloaded from [www.summersplaceauctions.com](http://www.summersplaceauctions.com) website. A bidding form is also printed in the back of the catalogue. This service is confidential. Lots will always be bought as cheaply as is consistent with other bids, the reserves and other commission bids. To avoid confusion, the sale date, lot number and a brief description should be filled in and signed. Commission bids by email without a signature will not be accepted. In the event of identical bids, the earliest received will take precedence. Always indicate a top limit, i.e. the highest price you would bid if you were attending the auction. Don't forget that buyers premium and any VAT applicable will also be added onto your bid if you are successful. "Buy" and unlimited bids will not be accepted. Please refer to our conditions of business for buyers, which is also printed in the back of our catalogues. To ensure a satisfactory service please ensure that we receive your bids at least 24 hours beforehand.

### Telephone bids

If you cannot attend the auction, it is usually possible to bid on the telephone. You will need to have registered your details with us 5 days before the auction. As the number of telephones is limited, it is necessary to make arrangements on which lots you wish to bid on, at least 24 hours before the sale. We also suggest that you leave a maximum bid which we can execute on your behalf in the event we are unable to reach you by telephone. Please refer to our conditions of business for buyers, which is also printed in the back of our catalogues.

### Online Bidding (SummersPlace Live - no surcharge)

If you cannot attend the auction, you may wish to bid using [the.saleroom.com](http://the.saleroom.com), which will incur an additional 5% of the hammer price plus VAT at the rate imposed

### **Sealed bid**

For further information please see pages at the end of this section.

### **Sale by private treaty**

Summers Place Auctions shall, from time to time, be offering some lots for sale by Private Treaty in our architectural portfolio. These will usually comprise larger pieces of an architectural nature, which will require a longer period of planning and consultation than an auction can provide. Additionally if you are looking for a specific piece please let us know and we will use our worldwide network of trade and private clients to help source the most suitable item for you. Please contact us for further information.

### **Payment**

Payment is due in sterling immediately after the sale and before purchases can be released. Payments in person can be made in the saleroom on the day of the auction using mobile banking, debit cards or by cheque. Thereafter payments may also be made by electronic transfer to our bank, through stripe, by post or by debit card transactions by telephone. Cash will not be accepted.

### **Sterling Banker's Draft or Building Society Cheque and Electronic or Wire Transfer**

Wire transfers can be made directly to our bank. Please contact us for further details. Sterling Banker's Drafts and Building Society Cheques drawn on a recognised UK bank or building society are also accepted.

### **Credit/Debit Card**

We are pleased to accept all major personal debit cards. Regrettably we are no longer able to accept credit cards

### **Sterling Cheque**

Please note that we require seven days to clear sterling cheques where the amount exceeds the cheque card guarantee limit, unless special arrangements have been made with the auctioneer in advance of the sale (normally the presentation of a letter of guarantee from your bank). We always reserve the right to hold goods until a cheque is cleared.

### **Collection and Storage**

On receipt of cleared funds, lots can be collected from the Walled Garden, Stane Street, Billingshurst, West Sussex,

RH14 9AB, Monday to Friday between 9.30am and 12.30pm and 2.00pm and 4.00pm. **Collection of lots is strictly by prior appointment and must be arranged at least 48 hours in advance.** If Lots have not been collected within 35 days of the auction date then storage charges may be applied at a rate of £10 per Lot per day. Buyers are reminded that liability for loss and damage transfers to the buyer from the fall of the hammer. Whilst the majority of lots will remain in their location until collected, Summers Place Auctions accept no responsibility for any damage which may occur, even in the event of Summers Place Auction staff assisting carriers during collection.

Summers Place Auctions also reserves the right to charge storage fees of £10.00 per lot, per week, for any pieces left at Summers Place over a longer period than six months irrespective of whether they have been entered into a sale or not.

### **Shipping**

We are happy to arrange shipping quotations and have extensive experience in working in conjunction with leading domestic and international shippers. There is no charge for arranging quotations.

## **CONDITIONS OF BUSINESS FOR BUYERS**

### **1. INTRODUCTION**

(a) The contractual relationship of Summers Place Auctions Ltd and Sellers with prospective Buyers is governed by:-

- (i) these Conditions of Business for Buyers;
- (ii) the Conditions of Business for Sellers displayed in the saleroom and available from Summers Place Auctions Ltd
- (iii) Summers Place Auctions Ltd 's Authenticity Guarantee; (iv) any additional notices and terms printed in the sale catalogue, in each case as amended by any saleroom notice or auctioneer's announcement.

(b) As auctioneer, Summers Place Auctions Ltd acts as agent for the Seller. Occasionally, Summers Place Auctions Ltd may own or have a financial interest in a lot.

### **2. DEFINITIONS**

"Bidder" is any person making, attempting or considering making a bid, including Buyers;



“Buyer” is the person who makes the highest bid or offer accepted by the auctioneer, including a Buyer’s principal when bidding as agent;

“Seller” is the person offering a lot for sale, including their agent, or executors;

“Buyer’s Expenses” are any costs or expenses due to Summers Place Auctions Ltd from the Buyer;

“Buyer’s Premium” is the commission payable by the Buyer on the Hammer Price or winning sealed bid price at the rates set out in the Guide for Prospective Buyers;

“Hammer Price” is the highest bid for the Property accepted by the auctioneer at the auction or the post auction sale price; “Purchase Price” is the Hammer Price plus applicable Buyer’s Premium and Buyer’s Expenses;

“Reserve Price” (where applicable) is the minimum Hammer Price at which the Seller has agreed to sell a lot.

The Buyer’s Premium, Buyer’s Expenses and Hammer Price are subject to VAT, where applicable.

### 3. EXAMINATION OF LOTS

(a) Summers Place Auctions Ltd knowledge of lots is partly dependent on information provided by the Seller and Summers Place Auctions Ltd is unable to exercise exhaustive due diligence on each lot. Each lot is available for examination before sale. Bidders are responsible for carrying out examinations and research before sale to satisfy themselves over the condition of lots and accuracy of descriptions.

(b) All oral and/or written information provided to Bidders relating to lots, including descriptions in the catalogue, condition reports or elsewhere are statements of Summers Place Auctions Ltd opinion and not representations of fact. Estimates may not be relied on as a prediction of the selling price or value of the lot and may be revised from time to time at Summers Place Auctions Ltd absolute discretion.

4. EXCLUSIONS AND LIMITATIONS OF LIABILITY TO BUYERS (a) Summers Place Auctions Ltd shall refund the Purchase Price to the Buyer in circumstances where it deems that the lot is a Counterfeit, subject to the terms of Summers Place Auctions Ltd Authenticity Guarantee.

(b) Subject to Condition 4(a), neither Summers Place Auctions Ltd nor the Seller:-

(i) is liable for any errors or omissions in any oral or written information provided to Bidders by Summers Place Auctions Ltd, whether negligent or otherwise;

(ii) gives any guarantee or warranty to Bidders and any implied warranties and conditions are excluded (save in so far as such obligations cannot be excluded by English law), other than the express warranties given by the Seller to the Buyer (for which the Seller is solely responsible) under the Conditions of Business for Sellers;

(iii) accepts responsibility to Bidders for acts or omissions (whether negligent or otherwise) by Summers Place Auctions Ltd in connection with the conduct of auctions or for any matter relating to the sale of any lot.

(c) Without prejudice to Condition 4(b), any claim against Summers Place Auctions Ltd and/or the Seller by a Bidder is limited to the Purchase Price for the relevant lot. Neither Summers Place Auctions Ltd nor the Seller shall be liable for any indirect or consequential losses.

(d) Nothing in Condition 4 shall exclude or limit the liability of Summers Place Auctions Ltd or the Seller for death or personal injury caused by the negligent acts or omissions of Summers Place Auctions Ltd or the Seller.

### 5. BIDDING AT AUCTION

(a) Summers Place Auctions Ltd has absolute discretion to refuse admission to the auction. Before sale, Bidders must complete a Registration Form and supply such information and references as Summers Place Auctions Ltd requires. Bidders are personally liable for their bid and are jointly and severally liable with their principal, if bidding as agent (in which case Summers Place Auctions Ltd’s prior and express consent must be obtained).

(b) Summers Place Auctions Ltd advises Bidders to attend the auction, but Summers Place Auctions Ltd will endeavour to execute absentee written bids provided that they are, in Summers Place Auctions Ltd’s opinion, received in sufficient time and in legible form.

(c) When available, written and telephone bidding is offered as a free service at the Bidder’s risk and subject to Summers Place Auctions Ltd’s other commitments; Summers Place Auctions Ltd is therefore not liable for failure to execute such bids. Telephone bidding may be recorded.

6. IMPORT, EXPORT AND COPYRIGHT RESTRICTIONS  
Summers Place Auctions Ltd and the Seller make no representations or warranties as to whether any lot is subject to import, export or copyright restrictions. It is the Buyer's sole responsibility to obtain any copyright clearance or any necessary import, export or other licence required by law, including licenses required by law under the International Trade in Endangered Species (CITES).

#### 7. CONDUCT OF THE AUCTION

(a) The auctioneer has discretion to refuse bids, withdraw or re-offer lots for sale (including after the fall of the hammer) if (s)he believes that there may be an error or dispute, and may also take such other action as (s)he reasonably deems necessary. (b) The auctioneer will commence and advance the bidding in such increments as (s)he considers appropriate and is entitled to place bids on the Seller's behalf up to the Reserve Price for the lot, where applicable.

(c) Subject to Condition 7(a), the contract between the Buyer and the Seller is concluded on the striking of the auctioneer's hammer.

(d) Any post-auction sale of lots shall incorporate these Conditions of Business.

#### 8. PAYMENT AND COLLECTION

(a) Unless otherwise agreed in advance, payment of the Purchase Price is due in pounds sterling immediately after the auction (the "Payment Date").

(b) Title in a lot will not pass to the Buyer until Summers Place Auctions Ltd has received the Purchase Price in cleared funds. Summers Place Auctions Ltd will not release a lot to a Buyer before payment.

(c) The refusal of any licence or permit required by law, as outlined in Condition 6, shall not affect the Buyer's obligation to pay for the lot, as per Condition 8(a).

(d) The Buyer must arrange collection of lots within 35 working days of the auction. Purchased lots are at the Buyer's risk from the fall of the hammer.

(e) All packing and handling of lots is at the Buyer's risk. Summers Place Auctions Ltd will not be liable for any acts or omissions of third party removers or shippers.

#### 9. REMEDIES FOR NON-PAYMENT

Without prejudice to any rights that the Seller may have, if the Buyer without prior agreement fails to make payment for the lot within 5 working days of the auction, Summers Place Auctions Ltd may in its sole discretion exercise one or more of the following remedies:-

(a) store the lot at its premises or elsewhere at the Buyer's sole risk and expense;

(b) cancel the sale of the lot;

(c) set off any amounts owed to the Buyer by Summers Place Auctions Ltd against any amounts owed to Summers Place Auctions Ltd by the Buyer for the lot;

(d) reject future bids from the Buyer;

(e) charge interest at 4% per annum above NatWest Bank Base Rate from the

Payment Date to the date that the Purchase Price is received in cleared funds;

(f) re-sell the lot by auction or privately, with estimates and reserves at Summers Place Auction Ltd.'s discretion, in which case the Buyer will be liable for any shortfall between the original Purchase Price and the amount achieved on re-sale, including all costs incurred in such re-sale;

(g) Exercise a lien over any Buyer's Property in Summers Place Auctions Ltd's possession, applying the sale proceeds to any amounts owed by the Buyer to Summers Place Auctions Ltd. Summers Place Auctions Ltd shall give the Buyer 14 days written notice before exercising such lien;

(h) commence legal proceedings to recover the Purchase Price for the lot, plus interest and legal costs;

(i) disclose the Buyer's details to the Seller to enable the Seller to commence legal proceedings.

#### 10. FAILURE TO COLLECT PURCHASES

(a) If the Buyer pays the Purchase Price but does not collect the lot within 35 days of the auction, the lot will be stored at the Buyer's expense and risk at Summers Place Auctions Ltd's premises or in independent storage.

(b) If a lot is paid for but uncollected within 6 months of the auction, following 60 days written notice to the Buyer, Summers Place Auctions Ltd will re-sell the lot by auction or privately, with estimates and reserves at Summers Place Auctions Ltd's discretion. The sale proceeds, less all Summers Place Auctions Ltd's costs, will be forfeited unless collected by the Buyer within 2 years of the original auction.

## 11. DATA PROTECTION

(a) Summers Place Auctions Ltd will use information supplied by Bidders or otherwise obtained lawfully by Summers Place Auctions Ltd for the provision of auction related services, client administration, marketing and as otherwise required by law.

(b) By agreeing to these Conditions of Business, the Bidder agrees to the processing of their personal information and to the disclosure of such information to third parties world-wide for the purposes outlined in Condition 11(a) and to Sellers as per Condition 9(i).

## 12. MISCELLANEOUS

(a) All images of lots, catalogue descriptions and all other materials produced by Summers Place Auctions Ltd are the copyright of Summers Place Auctions Ltd.

(b) These Conditions of Business are not assignable by any Buyer without Summers Place Auctions Ltd's prior written consent, but are binding on Bidders' successors, assigns and representatives.

(c) The materials listed in Condition 1(a) set out the entire agreement between the parties.

(d) If any part of these Conditions of Business be held unenforceable, the remaining parts shall remain in full force and effect.

(e) These Conditions of Business shall be interpreted in accordance with English Law, under the exclusive jurisdiction of the English Courts, in favour of Summers Place Auctions Ltd.

**Sealed bid- How it works** Our sealed bid auctions close at 4.00pm on the day after the live auction, but are on view at the same time and are included in the same catalogue with an illustration, description and estimate. Clients wishing to leave bids should do so in writing or by emailing a signed scanned page detailing lot numbers, brief description and the bid(s) which they wish to leave. All clients should also have registered with us beforehand and provided photographic identification.

Sealed bids, when placed by telephone, are accepted only at the the caller's risk and must be confirmed by letter or e-mail to [info@summersplaceauctions.com](mailto:info@summersplaceauctions.com). You can also e-mail the completed sealed bid form to [sealedbids@summersplaceauctions.com](mailto:sealedbids@summersplaceauctions.com)

Next give us your bid(s). This can be done by filling in the bidding slip found in your catalogue. If you are sending your bidding slip to Summers Place Auctions by post, please mark the envelope "Sealed Bid" so that we know it contains a sealed bid and do not open it accidentally. Bids and IDs may also be sent by e-mail. If you choose to send the bid electronically please email [sealedbids@summersplaceauctions.com](mailto:sealedbids@summersplaceauctions.com). This is a closed mailbox and will not be opened before the advertised time. However, we strongly recommend that if you have not viewed the sale in person, that you ask for condition reports on any lots you are thinking of leaving bids on.

Sealed bid auctions differ from established auctions in that the bid left is the bid that will be exercised in full. Therefore, if you decide to leave a bid of, say, £900 on the lot estimated at £800-1000 and there is no higher bid (where two identical bids are received, the earliest received bid will take precedence), £900 will secure the lot subject to buyer's premium and VAT on the premium.

We will contact you if you have been the successful bidder to inform you of the lot or lots that you have purchased, so that you can make payment and make arrangements for delivery. We have had many years of experience dealing with both UK carriers and international shippers and are happy to obtain quotations and facilitate transport and shipping of single lots and multiple purchases to anywhere in the world.

Bids will be opened on the Thursday following the sale; and sales results will appear on the Summers Place Auctions website. Please be mindful that we will have to process a large number of bids, which does take time. However, we will endeavour to get this accomplished as quickly as possible and will expect to have the results of the sale posted by the end of the day.

If you have never bid in a sealed bid sale before, here are some things to be aware of as regards leaving bids for this auction:

Every lot in the sale has a fixed reserve, (the minimum price for which the lot can be sold) and this is never above the low estimate, it can be slightly below, but in the vast majority of cases it is the low estimate.

The highest bid (as long as it is on or above the reserve) will be the winning bid. This is the 'hammer price' that the lot will be sold for.

You should consider leaving a bid of an odd amount in pounds, for example, rather than bidding £1,000, try say £1,004, as many lots have been bought for the sake of the odd £1!

You can tailor your bid in ways that are impossible to do in a live auction. For example, if you really like three lots, but only need one, and the piece you like the most is later in the sale, simply mark your order of preference. As long as your instructions are clear, having looked at any other bids left on the lots, we will do our best to comply with your preferences.

In the event of two identically highest bids, the earliest bid received will take precedence.

An auction price is made up of different components; the winning bid is called the 'hammer price'; A commission, which is in addition to the 'hammer price' is payable to the auctioneers. This is known as the buyers premium, on which VAT is payable. Lots marked with ▲ are subject to Artist Resale Right (ARR), which is 4% of the "hammer price". All lots that have additional VAT are clearly marked in the catalogue with a †.



### Sealed Bid Auction Lots 100-430

All sealed bids must be with us, at the latest by 4pm BST on the 28th September since the bids will be opened on the 29th September. The winning bid will be the highest left on each lot above the reserve. Bids are non sequential and the highest bid left is the price at which the lot is sold plus buyers premium and any VAT liable. In the event of two identical winning bids being left on the same lot, the earliest received bid shall take precedence. Summers Place Auctions decision on which is the winning bid shall be final. Winning bidders will be invoiced after the bids are opened. For further information on sealed bids and how they work see our conditions of business.



100

**A pair of green painted wooden gates**

20th century

106cm high by 94cm wide

£300-500

101

**A wrought iron garden gate**

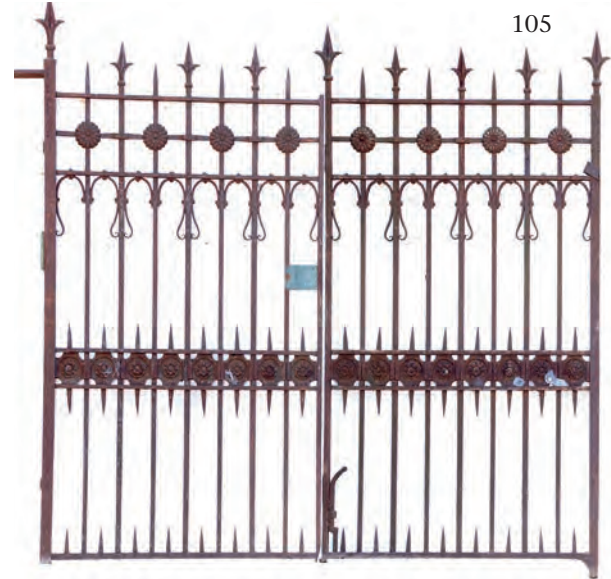
first half 20th century

162cm high by 94cm wide

£200-400



For details of our buyers premium which is added onto the hammer price together with any other applicable charges please refer to our guide for prospective buyers



102  
A pair of wrought iron  
gates  
125cm high by 266cm  
wide  
£100-200

103  
A pair of wrought iron  
gates  
first half 20th century  
117cm high by 266cm  
wide overall  
£200-400

104  
A pair of steel gates  
20th century  
240cm high by 364cm  
wide  
£2,000-3,000

105  
A pair of unusual  
wrought and cast iron  
bi-folding gates  
circa 1900  
175cm high by 180cm  
wide overall  
£1,000-1,500

Online bidding via SummersPlace Live - register through [www.summersplaceauctions.com](http://www.summersplaceauctions.com)  
No surcharge (*normal BP and VAT apply*)





106

### A rare wrought iron entranceway

German

late 17th century

restored

overall height 220cm overall width 546cm

In the late 19th century the screen was brought back from Nuremberg having been purchased by the Reverend William Herbert Seddon from a local antique dealer J.Christian Wohlbold who also supplied a number of pieces to the Germanisches National Museum. In 1890 he donated it to St Mary's Church, Painswick, Gloucester\* and it remained in use as the chancel screen until repairs to the church necessitated its removal in the 1940s.

The six panels are filled by a series of intricate and interlaced geometrical patterns combined with incised leafy fronds and foliage. The two central panels are surmounted by an elaborate crest of scrolling leafy tendrils and stylised winged cherubs flanked by foliated and spiral pinnacles.

Similar examples of this kind of decorative wrought

ironwork can be found in the Germanisches National museum and the Victoria & Albert museum but the closest parallel is a pair of wrought iron gates dated 1649 in front of one of the portals on the south side of St Lorenz Church, Nuremberg.

This magnificent screen, a rare survival outside Nuremberg, demonstrates, despite losses and minor restorations, the skill of the blacksmith at the highest level.

\*Hyett, Francis A'Glimpses of the History of Painswick' pp 40-41 1928

£8,000-12,000





107  
A pair of large  
composition stone balls  
modern  
52cm diameter  
£800-1,200

108  
A pair of Breche marble  
balls  
29cm diameter  
£300-500

One of 12 identical pairs

109	113	118
A pair of large composition stone balls	A similar pair	A similar pair
£500-800	£500-800	£500-800
46cm diameter	114	119
£500-800	A similar pair	A similar pair
	£500-800	£500-800
110	115	120
A similar pair	A similar pair	A similar pair
£500-800	£500-800	£500-800
111	116	
A similar pair	A similar pair	
£500-800	£500-800	
112	117	
A similar pair	A similar pair	
£500-800	£500-800	

Online bidding via SummersPlace Live - register through [www.summersplaceauctions.com](http://www.summersplaceauctions.com)  
No surcharge (normal BP and VAT apply)



121  
A pair of composition  
stone finials  
modern  
85cm high  
£1,200-1,800



122  
A pair of carved  
limestone pineapple  
finials  
20th century  
64cm high  
£800-1,200

123  
A pair of large carved  
limestone lidded  
urns with handles on  
pedestals  
modern  
250cm high  
£1,800-2,500

For details of our buyers premium which is added onto the hammer price together with any other applicable charges please refer to our guide for prospective buyers





124  
**An unusual wrought and cast iron boot scraper**  
 19th century  
 100cm high  
 £200-400



125  
**A cast iron boot scraper**  
 circa 1860  
 on sandstone base  
 38cm high by 57cm square  
 £150-250



127  
**Two Victorian cast iron boot scrapers**  
 2nd half 19th century  
 33cm high by 46cm wide  
 one with indistinct registration stamp  
 £200-400



129  
**Four different cast iron boot scrapers**  
 2nd half 19th century  
 one incorporating brushes  
 largest 602cm wide  
 £200-400



126  
**A Victorian cast iron boot scraper**  
 mid 19th century  
 on sandstone base  
 32cm high by 48cm wide  
 £150-250



128  
**An early wrought iron boot scraper**  
 18th/early 19th century  
 28cm high by 40cm long  
 £100-150



130  
**A cast iron lion bootscraper**  
 20th century  
 66cm wide  
 £120-180

Online bidding via SummersPlace Live - register through [www.summersplaceauctions.com](http://www.summersplaceauctions.com)  
 No surcharge (*normal BP and VAT apply*)





131

**A set of nine carved stone steps from a spiral staircase**

19th century  
21cm high by  
135cm long  
£800-1,200



132

**A pair of Art Deco carved Portland stone plaques**

circa 1920  
carved in relief with  
stylised lion heads  
45cm high by 46cm wide  
by 23cm deep  
£700-1,000

133

**A pair of Art Deco carved Portland stone plaques**

£700-1,000

134

**A pair of Art Deco carved Portland stone plaques**

£700-1,000

135

**A pair of Art Deco carved Portland stone plaques**

£700-1,000

136

**A pair of Art Deco carved Portland stone plaques**

£700-1,000

For details of our buyers premium which is added onto the hammer price together with any other applicable charges please refer to our guide for prospective buyers



137



139



140



138

137

**A copper and wrought iron weathervane**

probably American late 19th century

202cm high by 85cm wide

Provenance: The Gordon Gridley Collection, London

£600-1,000

138

**A cast and wrought iron weather vane**

made up and incorporating 19th century elements

97cm high

£200-400

139

**A wrought iron and copper weathervane**

early 20th century

294cm high by 91cm wide

£600-1,000

140

**A wrought iron weathervane**

late 19th century

146cm wide

£700-900

Online bidding via SummersPlace Live - register through [www.summersplaceauctions.com](http://www.summersplaceauctions.com)  
No surcharge (normal BP and VAT apply)





141

**A pair of elm wood doors  
with inset leaded stained  
glass panels**

20th century

198cm high by 114cm  
wide

£200-400

142

**A pair of wooden Doric  
Order columns**

early 20th century  
237cm high

£300-500

For details of our buyers premium which is added onto the hammer price together with any other applicable charges please refer to our guide for prospective buyers



143

**A set of six Regency wooden Ionic Order pilasters**

272cm high

together with five door surrounds en suite  
248cm by 166cm and sundry architectural pieces

Removed from Hall Barn, Beconsfield. When the ball room and library were each added in 1806, they were later demolished under the direction of Lord Burnham, as he felt that the house was too big to live in and maintain after World War II, reducing the house to the classic London box style of 1660.

£500-800







145

**A pair of pine doors set with stained glass panels**

circa 1900

224cm by 81cm

the panels 125cm high by 60cm wide

£500-800

146

**A similar pair of pine doors with stained glass panels**

circa 1900

124cm high by 80cm wide

£500-800



144

**An Oak cupboard door**

and frame, probably for a wall cupboard

dated 1643

79cm by 78cm

£600-1,000

Online bidding via SummersPlace Live - register through [www.summersplaceauctions.com](http://www.summersplaceauctions.com)  
No surcharge (normal BP and VAT apply)



147  
**A stained glass arched panel**  
 circa 1900  
 68cm high by 72cm wide  
 £150-250



148  
**A pair of leaded stained glass panels**  
 of figures in Japanese dress  
 early 20th century  
 in wooden frames  
 157cm high by 47cm wide the glass  
 134cm high by 33cm wide  
 £600-1,000



149  
**A pair of leaded and stained glass panels**  
 early 20th century  
 228cm high by 31cm wide  
 £300-500

For details of our buyers premium which is added onto the hammer price together with any other applicable charges please refer to our guide for prospective buyers



150

A George III mahogany break front bookcase

late 18th century

with later painted decoration

224cm high by 111cm wide by 55cm deep

£500-800



151

A painted pine dresser with marble sink unit

late 20th century

115cm high by 145cm wide

£500-800

Online bidding via SummersPlace Live - register through [www.summersplaceauctions.com](http://www.summersplaceauctions.com)

No surcharge (normal BP and VAT apply)





152  
**A cast iron collection box**  
 late 19th century  
 94cm high  
 £250-400



154  
**A Breton oak food cabinet**  
 17th/18th century  
 162cm high by 176cm wide  
 £1,000-1,500

153  
**A Georgian gesso and pine chimneypiece tablet**  
 3rd quarter 18th century  
 21cm high by 42cm long  
 This is based on the onyx cameo made by Tryphon



during the Roman Late Republican or Early Imperial period (50-25BC). It once belonged to Peter Paul Reubens and was inventoried in both the

collection of the Duke or Arundel and of the Duke of Marlborough in the 18th century.  
 £200-400

For details of our buyers premium which is added onto the hammer price together with any other applicable charges please refer to our guide for prospective buyers



156



157

155

A composition marble rectangular relief plaque of a Bacchanalian feast

early 20th century

inscribed *Adriano Cecioni, Firenze 1772*

25cm high by 89cm long together with a **similar smaller plaque** inscribed Francois Duquesnoy, Paris 1892 both with faux bronze exhibition roundels on each back 30cm by 40cm

£200-400

157

A similar carved white marble papal coat of arms plaque

circa 1900

80cm high by 60cm wide

£400-600

158

A bronze Borough of Camberwell plaque

with inscription and dated 1920-1922

61cm diameter

£500-700



156

A carved white marble papal coat of arms plaque

circa 1900

80cm high by 60cm wide

£400-600

Online bidding via SummersPlace Live - register through [www.summersplaceauctions.com](http://www.summersplaceauctions.com)  
No surcharge (normal BP and VAT apply)





159

A pair of early 20th century painted and gilt glass Royal Warrant signs each 114cm high by 138cm wide

£3,000-5,000



160

A painted and gilt sign 64cm high by 185cm wide  
£1,000-2,000



161

A painted and gilt sign 64cm high by 185cm wide  
£1,000-2,000

For details of our buyers premium which is added onto the hammer price together with any other applicable charges please refer to our guide for prospective buyers





162



163



164

162

**An unusual wrought iron and stained glass chandelier**

circa 1900  
with inset stained glass and  
marble panels  
230cm high by 90cm wide  
£2,000-4,000

164

**A gilt bronze hexagonal lantern**

early 20th century  
with beveled glass panels  
76cm high  
£1,200-1,800

163

**A gilt brass lantern**

early 20th century  
with cut glass panels  
100cm high by 40 cm wide  
Provenance: The Gordon  
Gridley Collection, London  
£800-1,200

Online bidding via SummersPlace Live - register through [www.summersplaceauctions.com](http://www.summersplaceauctions.com)  
No surcharge (normal BP and VAT apply)



165

**Two pairs of impressive  
brass/bronze wall  
lanterns with cast iron  
brackets**

Italian, late 19th century  
124cm high

£2,500-4,000

166

**A pair of silvered brass  
and bronzed iron  
lanterns**

124cm high

£2,500-4,000



166

For details of our buyers premium which is added onto the hammer price together with any other applicable charges please refer to our guide for prospective buyers



169

**An Historic full size mahogany snooker table by Thurston and Co**

With applied makers plaque

85.5cm high by 384cm long by 204cm wide (*Cues not included*)

Provenance; Removed from Admiralty Arch, Whitehall. This iconic London building at the opposite end of the Mall to Buckingham Palace was commissioned by King Edward VII in memory of his mother, Queen Victoria, and designed by Aston Webb. Completed in 1912, in the past, it served as residence of the First Sea Lord and was used by the Admiralty. Until 2011, the building housed government offices. In 2012, the government sold the building on a 125-year lease for £60m for a proposed redevelopment into a Waldorf Astoria luxury hotel and four apartments.

When it was installed, the First Sea lord between 1912-1914 was Prince Louis of Mountbatten, father of Earl Mountbatten who held the same appointment from 1955-1959. The roll call of First Sea Lords during the 20th century encompasses many well known historical figures and one can only speculate who else may have played on this table.

*Accessories: The balls come with the table but no other accessories or equipment.*

£1,000-1,500



167

**A pair of cast iron and oak signal cannons**

20th century

56cm long

£300-500

168

**A terracotta rhubarb forcer**

20th century  
stamped *Bourne Valley Pottery, Dorset*

53cm high

together with a  
**terracotta finial** 54cm  
high, and a **collection**  
of **wooden bowls** in  
pine case

£150-250



Online bidding via SummersPlace Live - register through [www.summersplaceauctions.com](http://www.summersplaceauctions.com)  
No surcharge (*normal BP and VAT apply*)





170

**A Victorian painted pine clock turret**

late 19th century

one side mounted with a painted tin dial and surmounted with a weather vane base

300cms high by 125cm square

£1,000-2,000



171

**A pair of carved teakwood Nagas**

Burmese

mid 20th Century with gilt and inset mirrored decoration on stands

222cm high overall

£1,500-2,500

For details of our buyers premium which is added onto the hammer price together with any other applicable charges please refer to our guide for prospective buyers



172

**A single wrought iron treillage obelisk**

modern  
254cm high together with  
**an iron armillary**  
100cm high

£200-250

173

**A natural carved sandstone henge**

now fitted in cast iron  
circular planter  
200cm high

£400-600

174

**A carved stone book with inscribed quotation**

early 20th century  
60cm wide  
from Ella Wheeler's poem  
"Solitude" (1883)

£400-600

175

**A pair of wooden gates**

20th century  
112cm high by  
100cm wide

£300-500

Online bidding via SummersPlace Live - register through [www.summersplaceauctions.com](http://www.summersplaceauctions.com)  
No surcharge (normal BP and VAT apply)





176

**A glazed meal terrarium**

20th century

33cm high by 70cm long

£200-400



177

**A glazed aluminium  
cloche/terrarium,**

American early 20th  
century

60cm square

£400-600

178

**A painted composition  
stone bird cage**

French, mid 20th century

195cm high

£450-700



For details of our buyers premium which is added onto the hammer price together with any other applicable charges please refer to our guide for prospective buyers





179

**An impressive aluminium and brass 6" refracting astronomical Telescope by Irving & Sons**

circa 1950  
on polished aluminium stand with iron counterweights, with rack and pinion mechanism, calibrated ring and brass sighting scope 8 together with nut, spanners, associated alan keys and extra iron counter weight 192cms high by 211cms long

H. N. Irving and Son was one of the last firms of bespoke telescope makers.

£2,500-4,000



180

**A wooden threshing roller**

early 20th century

102cm high

£150-250

181

**A carved marble basin**

with gilt brass fittings

20th century 62cm wide

£250-400



182  
A collection of hat  
makers moulds  
the largest 22cm high  
£200-300

183  
A cast iron tethering post  
late 19th century  
173cm high  
together with supporting  
iron strut  
£800-1,200



184  
A pair of bell metal  
cowbells  
Swiss 20th century  
with decorative neck  
straps  
42cm high (incl strap);  
19cm diameter  
£300-500



185  
An horology plaque  
19th century  
61cm  
£300-500



For details of our buyers premium which is added onto the hammer price together with any other applicable charges please refer to our guide for prospective buyers





186

**Two Cotswold staddle stones**  
the larger 83cm high

£400-600

187

**A carved Istrian stone basin**

Italian, 18th century or earlier

80cm wide

£500-800

188

**A shallow carved Cotswold  
stone trough**

17cm high by 85cm wide by  
57cm deep

£200-300

189

**† A carved sandstone  
trough**

74cm high by 101cm  
wide by 88cm deep

£1,000-1,500

Online bidding via SummersPlace Live - register through [www.summersplaceauctions.com](http://www.summersplaceauctions.com)

No surcharge (*normal BP and VAT apply*)



190

**A carved and veined  
marble bath**

circa 1900

60cm high by 172cm long  
by 75cm (restorations)

£1,200-1,800



191

**A pair of wrought iron  
rectangular planters**

20th century

each with lift out liner

54cm high by 183cm long  
by 53cm deep

£600-1,000



192

**A similar pair of wrought  
iron rectangular planters**

20th century

each with lift out liner

54cm high by 183cm long  
by 53cm deep

£600-1,000



For details of our buyers premium which is added onto the hammer price together with any other applicable charges please refer to our guide for prospective buyers



193

**An unusual pair of painted cast iron square planters**

2nd half 19th century  
made up out of pilaster  
capitals

29cm high by 33cm square

£400-600

194

**A similar pair of painted cast iron square planters**

2nd half 19th century  
made up out of pilaster  
capitals

29cm high by 33cm square

£400-600

195

**A Romaneque style carved Istrian stone bowl**

Italian

late 19th/early 20th  
century the top with old  
fixing holes

60cm high by 70cm  
diameter on octagonal  
carved stone base

123cm high overall

£500-800

196

**A carved hardwood planter**

43cm high by 56cm  
diameter

(planting hole 25cm deep,  
28cm diameter)

£200-300

Online bidding via SummersPlace Live - register through [www.summersplaceauctions.com](http://www.summersplaceauctions.com)  
No surcharge (normal BP and VAT apply)





197

Part lot showing - see website for further images

197

**A pair of stoneware  
plinths**

circa 1870  
each stamped *B. Gibbons,  
Stourbridge*

58cm high together with a  
**Doulton stoneware urn**,  
late 19th century, stamped  
*Doulton Lambeth*, 58cm  
diameter

£250-400

198

**A pair of carved white  
marble cisterns**

20th century

52cms high by 66cms  
wide

£2,500-4,000

199

**A pair of composition  
stone urns**

dated 1984  
77cm high together  
with a **pair of Borghese  
composition stone urns**  
late 20th century and a  
**pair of composition stone  
bench ends**

£250-400

200

**A pair of grey veined  
marble urns**

20th century

45cm high by 40cm  
diameter

£500-800



198



199

Part lot showing - see website for further images



200

For details of our buyers premium which is added onto the hammer price together with any other applicable charges please refer to our guide for prospective buyers





201

**Two composition stone urns**

late 20th century  
the larger 74cm high  
£300-500

203

**A pair of terracotta basket weave planters**

modern  
50cm high by 58cm diameter  
£150-250

202

**A pair of Swedish style composition stone lidded urns**

late 20th century  
163cm high  
£1,200-1,800

Online bidding via SummersPlace Live - register through [www.summersplaceauctions.com](http://www.summersplaceauctions.com)  
No surcharge (*normal BP and VAT apply*)

204

**A pair of unusual carved stone planters**

20th century

72cm high by 70cm diameter

£2,000-3,000

205

**A similar pair of carved stone planters**

£2,000-3,000

206

**A similar pair of carved stone planters**

£2,000-3,000



207

**A carved stone urn with later tufastone**

82cm high

£500-800



For details of our buyers premium which is added onto the hammer price together with any other applicable charges please refer to our guide for prospective buyers





208

**A composition stone trough**

70cm long

£100-200

211

**A pair of cast iron lobed planters**

late 20th century

69cm wide

£80-120

209

**† A pair of carved sandstone lug pots**

modern

74cm high

£600-1,000

210

**† A bronze urli**

Indian, 20th century

78cm diameter

£800-1,200



Online bidding via SummersPlace Live - register through [www.summersplaceauctions.com](http://www.summersplaceauctions.com)  
No surcharge (*normal BP and VAT apply*)





212  
† A wrought iron kadai  
on stand  
132cm diameter  
£900-1,200



213  
† A large beaten copper  
pot with ring handles  
early 20th century  
66cm high by 87cm wide  
£700-900



214  
† A large beaten brass pot  
early 20th century  
45cm high by 96cm  
diameter  
£700-900

215  
A terracotta urn on  
pedestal  
late 19th century  
with replaced foot in  
composition stone  
110cm high  
£200-400



For details of our buyers premium which is added onto the hammer price together with any other applicable charges please refer to our guide for prospective buyers



216

**A composition stone faux bois tree trunk planter**

mid 20th century

78cm high by 40cm wide and deep

£300-500

217

**† A substantial carved sandstone column pedestal**

modern

136cm high by 60cm diameter at top

£600-1,000

218

**A pair of composition stone pedestals**

2nd half 20th century  
94cm high

£700-900

219

**A rare and early carved sandstone polyheaded sundial**

Scottish

17th century

62cm high by 65cm wide

This sundial is probably a seventeenth century or earlier stone polyhedron with an octagonal plan form with faces carved with eleven scaphes, some which have traces of the original gnomons. The 'north' faces are uncarved. The stone would have been mounted on a plinth or pillar probably surmounted by a finial. Whilst the earliest multiple dials such as this were to be found in Germany and England, the most

extraordinary dials, often carved in an indigenous red sandstone, are to be found in Scotland as with this example. Whilst there is no logical explanation for this, the scottish mind for mathematics and science took to the multiple sundial in a way which is found nowhere else in the history of gnomonics or the art of dialling. Although now sadly eroded, this dial represents an interesting challenge and could be restored to working order with professional stone conservation and sundial gnomonics supervision.

Literature; Sundials by Christopher St J.H. Daniel, 1986

£600-1,000

Online bidding via SummersPlace Live - register through [www.summersplaceauctions.com](http://www.summersplaceauctions.com)  
No surcharge (normal BP and VAT apply)



220

**A staddlestone with  
sundial top**

83cm high by 33cm wide  
by 30cm deep

£200-300



221

**An unusual carved stone  
base**

possibly a boundary  
marker dated 1843

now mounted with later  
lead arrow

160cm high overall

Provenance: removed from  
Tugg Hall Grange, near  
Alnwick, Northumberland

£600-1,000

222

**An unusual Gothic style  
carved stone sundial  
pedestal**

with associated armillary  
sphere

165cm high

£1,000-1,500

223

**A lead bird bath**

1st half 20th century  
75cm high

£300-500



For details of our buyers premium which is added onto the hammer price together with any other applicable charges please refer to our guide for prospective buyers





224

▲ Tom Greenshields  
(1915-1994)

A bronze, resin and  
composition stone bird  
bath

modern

103cm high

£2,500-4,000

225

A Coalbrookdale cast  
iron fountain base

circa 1870

70cm high by 67cm  
diameter

This fountain is illustrated  
in the 1875 Coalbrookdale  
catalogue, Section III, no  
18

£1,000-1,500

Online bidding via SummersPlace Live - register through [www.summersplaceauctions.com](http://www.summersplaceauctions.com)  
No surcharge (*normal BP and VAT apply*)





226

**A lead and stone  
bird bath**

early 20th  
century  
69cm wide by  
45cm deep  
£600-1,000



227

**A composition stone  
two tier fountain and  
surround**

late 20th century  
208cm high by  
320cm diameter  
£5,000-8,000



228

**A composition stone  
fountain with surround**

2nd half 20th, century  
164cm high by 256cm  
diameter  
182cm internal diameter  
£2,500-4,000

For details of our buyers premium which is added onto the hammer price together with any other applicable charges please refer to our guide for prospective buyers





229

**An unusual wrought iron and copper fountain panel**

20th century

175cm high by 82cm wide  
by 10cm deep

£300-500

230

**A lead bird bath**

1st half 20th century,  
with later bronze crab 31cm  
high by 40cm wide by 40cm  
deep

£400-600

231

**A cast iron wall fountain**  
modern

123cm high

£150-250

232

**A cast iron fountain**

French, late 19th century  
230cm high by 102cm  
diameter

£2,500-4,000

Online bidding via SummersPlace Live - register through [www.summersplaceauctions.com](http://www.summersplaceauctions.com)  
No surcharge (normal BP and VAT apply)



233

**A Georgian style lead cistern**

20th century

bearing the date 1767

74cm high by 120cm long  
by 68cm deep

£2,500-4,000



234

**† A carved sandstone table**

modern

with black slate top

88cm high by 156cm long

£1,500-2,500



For details of our buyers premium which is added onto the hammer price together with any other applicable charges please refer to our guide for prospective buyers



235

**A rare Regency reeded  
three tier wrought iron  
plant stand**

early 20th century  
122cm long  
£600-1,000

238

**A wrought iron console  
table**

French, 1st half of the  
20th century  
150cm high  
£200-300

236

**An Edwardian rope twist  
wire work plant stand**

early 20th century  
101cm high by 110cm  
long  
£400-600

237

**A wrought iron seat**

late 19th/early 20th  
century  
186cm long  
£300-500

Online bidding via SummersPlace Live - register through [www.summersplaceauctions.com](http://www.summersplaceauctions.com)  
No surcharge (*normal BP and VAT apply*)





239

**A cast iron table with  
marble top**

late 19th century

107cm wide

£400-600



240

**A cast iron table with  
marble top**

late 19th century

107cm wide

£200-400

241

**A wrought iron pergola  
seat**

late 20th century

240cm high by 107cm  
wide

£500-800

242

**A similar wrought iron  
pergola seat**

late 20th century

240cm high by 107cm  
wide

£500-800



For details of our buyers premium which is added onto the hammer price together with any other applicable charges please refer to our guide for prospective buyers





243

**A suite of wooden furniture**

late 20th century  
comprising a folding table  
132cm long and four  
chairs

£200-400

Online bidding via SummersPlace Live - register through [www.summersplaceauctions.com](http://www.summersplaceauctions.com)  
No surcharge (*normal BP and VAT apply*)

106

244

**A hardwood wooden table**

modern  
250cm long by 102cm  
wide

£800-1,200



245

**A pair of massive oak chairs**

late 20th century  
220cm high  
£1,000-1,500



246

**An unusual circular glass topped table**

19th century and later  
with ships wheel on  
composition base

182cm diameter

£1,500-2,500

247

**A teak bench**

20th century  
with slatted back  
147cm wide

£150-250



248

**A wooden Chinese Chippendale style bench**

20th century

£150-250



249

**A cast iron and wooden slatted seat**

early 20th century

140cm wide

£300-500



For details of our buyers premium which is added onto the hammer price together with any other applicable charges please refer to our guide for prospective buyers





250

**A suite of Coalbrookdale style Gothic pattern furniture**

comprising a seat and two chairs the seat 126cm long together with a pair of rustic pattern cast iron seat ends

£300-500



251

**A carved limestone seat modern**

height 118cm by 220cm long

£4,000-6,000

Online bidding via SummersPlace Live - register through [www.summersplaceauctions.com](http://www.summersplaceauctions.com)  
No surcharge (*normal BP and VAT apply*)





252

**A suite of wrought and galvanised iron furniture**

modern

the table with earlier slate top

180cm long by 77cm wide

£1,200-1,800



253

**A composition stone bench**

late 20th century with

replaced wooden seat

together with a **pair of composition stone urns**

43cm high

£100-200



254

**A pair of strapwork wrought iron seats**

circa 1900

188cm long

£800-1,200



255

**A composition stone bench**

20th century

£400-600

For details of our buyers premium which is added onto the hammer price together with any other applicable charges please refer to our guide for prospective buyers



256

**A Regency style reeded wrought iron seat**

modern

180cm long

£500-800

258

**A Victorian cast iron rustic pattern seat**

2nd half 19th century

130cm long

£250-400

257

**An unusual wrought iron and stone table**

early 20th century 121cm  
by 75cm

£400-600

Online bidding via SummersPlace Live - register through [www.summersplaceauctions.com](http://www.summersplaceauctions.com)  
No surcharge (*normal BP and VAT apply*)





259  
**A wrought iron  
strapwork seat**  
early 20th century  
182cm wide  
£250-400



260  
**A similar larger wrought  
iron strapwork seat**  
early 20th century  
244cm long  
£300-500



261  
**A wrought iron circular  
tree seat**  
20th century  
in four parts  
242cm diameter  
£1,200-1,800



262  
**An unusual metal alloy  
Regency style bench  
terminal**  
20th century  
56cm high by 80cm long  
£100-150

For details of our buyers premium which is added onto the hammer price together with any other applicable charges please refer to our guide for prospective buyers





263

**A cast iron pub table base**

20th century

60cm diameter

£50-80

264

**A cast iron pub table**

early 20th century

indistinctly stamped with wooden top

74cm diameter

£100-200

265

**A King Alfred pattern cast iron pub table**

early 20th century

stamped *Mitchells and Butlers Ltd, Birmingham* with painted wooden top

60cm diameter

£100-200

266

**A Jubilee pattern cast iron pub table**

early 20th century

stamped *Reynolds & Co Barristers Leeds* with veined marble top

65cm diameter

£100-200

268

**An Edward VIIth pattern cast iron pub table**

early 20th century

stamped *A Shackleton, barfitters Paremon* with later top

60cm diameter

£100-200

267

**A King Alfred pattern cast iron pub table**

early 20th century

with pierced top 60cm diameter

£100-200

Online bidding via SummersPlace Live - register through [www.summersplaceauctions.com](http://www.summersplaceauctions.com)

No surcharge (*normal BP and VAT apply*)



269

**269  
A Britannia pattern cast iron pub table**

late 19th century  
with inset marble top  
67cm diameter  
£150-250



270

**270  
A cast iron circular table**

2nd half 19th century  
56cm diameter  
£600-800



271

**271  
A Victorian cast iron occasional table**

2nd half 19th century  
60cm diameter  
£150-250



272

**272  
An unusual Victorian cast iron table**

stamped '*The Stanley Table*', with marble top  
55cm diameter  
£240-400

For details of our buyers premium which is added onto the hammer price together with any other applicable charges please refer to our guide for prospective buyers





Online bidding via SummersPlace Live - register through [www.summersplaceauctions.com](http://www.summersplaceauctions.com)  
 No surcharge (*normal BP and VAT apply*)  
 114





273

**A pair of demi lune wrought iron strapwork seats**

modern

168cm diameter

£1,500-2,500

274

**A similar single wrought iron strap work demi lune seat together with a similar chair**

168cm diameter

£800-1,200

275

**A wrought iron and sandstone table**

20th century

184cm by 91cm

£1,500-2,500

276

**A suite of furniture comprising of 6 folding chairs and table with marble top**

early 20th century

table 90cm diameter

£500-800

277

**▲ A unique blacksmith made upholstered suite of table, thrones and chairs, in wrought iron enhanced with natural minerals by Shelley Thomas**

table: 193cm by 82cm wide (see diagram online with full dimensions)

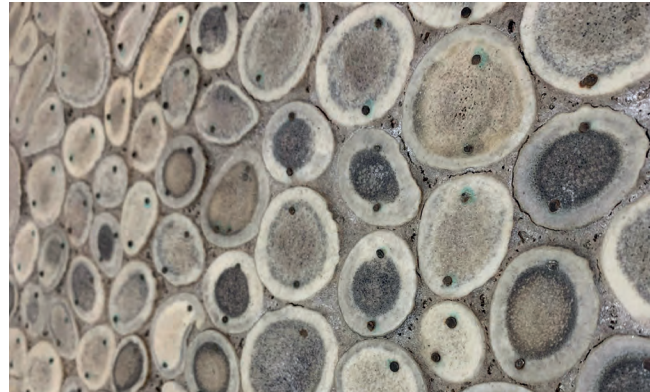
A graduate of the Sir John Cass School of Art, Shelley Thomas designs and makes jewellery and flamboyant furniture from her studio at the London Museum of Water & Steam in Brentford. This suite was commissioned and made in 2003. Applied with script in Latin, French and English, the different elements have been enhanced with amethyst, iron pyrites, and quartz crystals.

£25,000-35,000

For details of our buyers premium which is added onto the hammer price together with any other applicable charges please refer to our guide for prospective buyers



278  
**An antler convex mirror**  
 modern  
 84cm diameter  
 £1,200-1,800



279  
**A pair of antler console tables**  
 modern  
 92cm high by 122cm wide  
 £5,000-8,000

Online bidding via SummersPlace Live - register through [www.summersplaceauctions.com](http://www.summersplaceauctions.com)  
 No surcharge (*normal BP and VAT apply*)



280

**An antler coffee table**

modern

50cm high by 122cm wide  
by 68cm deep

£2,500-4,000



281

**A wrought iron strap  
work seat**

early 20th century  
186cm long

£250-400



For details of our buyers premium which is added onto the hammer price together with any other applicable charges please refer to our guide for prospective buyers



282  
A composition stone stele  
of two figures  
with makers plaque  
30cm high  
£80-120

283  
A composition stone  
centurion in Roman  
armour  
late 20th century  
170cm high  
£800-1,200

285  
A composition stone  
figure of Minerva dressed  
in armour  
late 20th century  
170cm high  
£800-1,200

284  
A composition stone  
figure of Hercules  
late 20th century  
170cm high  
£800-1,200

286  
After Michelangelo: A  
composition stone figure  
of David  
late 20th century  
170cm high  
£800-1,200

Online bidding via SummersPlace Live - register through [www.summersplaceauctions.com](http://www.summersplaceauctions.com)  
No surcharge (*normal BP and VAT apply*)





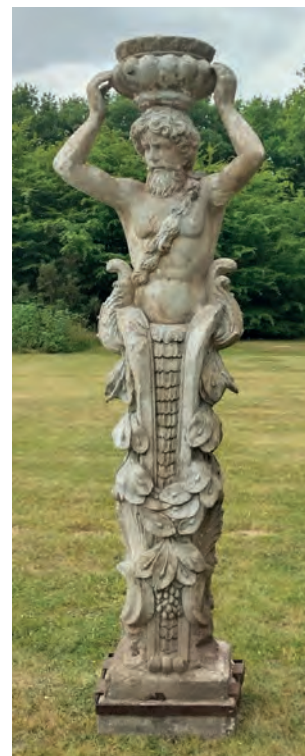
287  
**A lead owl**  
 20th century  
 mounted on earlier carved  
 granite faux wood tree  
 trunk  
 98cm high  
 £800-1,200



288  
**A carved Portland stone  
 column**  
 19th century  
 surmounted by a later  
 composition stone figure  
 of a girl  
 142cm high  
 £150-250



289  
**A carved composition  
 stone figure of a putto on  
 pedestal**  
 1st half 20th century  
 163cm high  
 Provenance; Sotheby's  
 sale of Wilsford Manor,  
 14th/15th October 1987,  
 lot 487  
 £800-1,200



290  
**A faux stone patinated  
 fibreglass resin caryatid  
 figure**  
 late 20th century  
 180cm high  
 £200-400

For details of our buyers premium which is added onto the hammer price together with any other applicable charges please refer to our guide for prospective buyers



291

**A pair of composition  
stone sphinxes**

late 20th century  
74cm long

£400-600

293

**A bronze stag**

2nd half 20th century  
126cm high by 170cm  
long

£3,000-5,000

292

**A pair of carved wooden  
sphinxes**

20th century  
77cm high by 120cm long

£600-1,000

Online bidding via SummersPlace Live - register through [www.summersplaceauctions.com](http://www.summersplaceauctions.com)  
No surcharge (*normal BP and VAT apply*)





294

**A bronze Japanese style crane**

late 20th century

64cm high

£300-500



295

**Two composition stone eagles**

20th century

80cm high

£500-800



296

**A composition stone group of two greyhound head's**

modern

30cm high by 47cm long

£200-400

For details of our buyers premium which is added onto the hammer price together with any other applicable charges please refer to our guide for prospective buyers



297

**After Giambologna: A lead figure of Mercury**

1st half 20th century

112cm high

£800-1,200



298

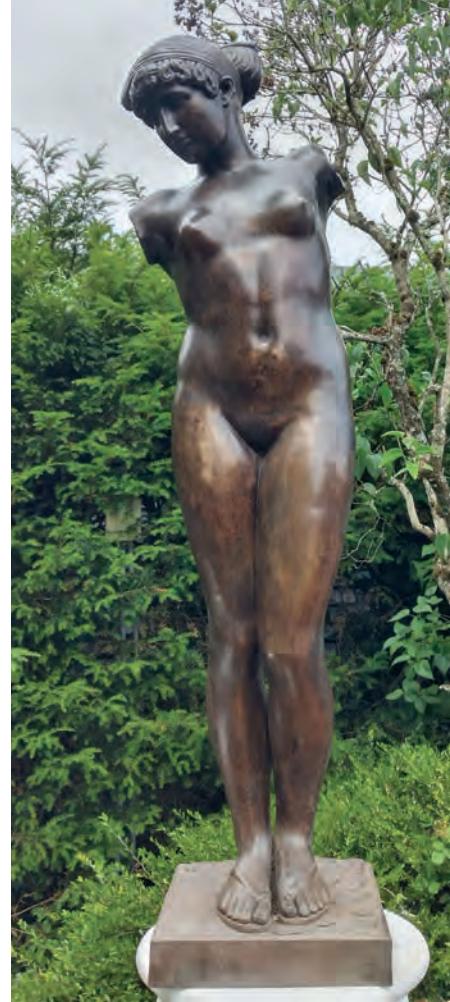
**A Durenne foundry cast iron torchere figure of an Egyptian boy**

the base stamped

127cm high

The Durenne foundry was incorporated into the Val d'Osne foundry in 1888.

£400-600



299

**After the Antique: A bronze resin figure of the Esquiline Venus**

20th century

160cm high

£600-1,000

Online bidding via SummersPlace Live - register through [www.summersplaceauctions.com](http://www.summersplaceauctions.com)  
No surcharge (*normal BP and VAT apply*)





300

**After the Antique: A plaster cast of the Esquiline Venus torso**

20th century

on painted wooden plinth  
160cm high overall

For more information on the Esquiline Venus, please see our website

£500-800

For details of our buyers premium which is added onto the hammer price together with any other applicable charges please refer to our guide for prospective buyers



301

**A pair of composition stone terms representing Summer and Winter**

2nd half 20th century

144cm high

£800-1,000



302

**A composition stone figure of a putto representing autumn on pedestal**

late 20th century

155cm high

£400-600





303

**A composition stone figure of two cherubs holding a shell bowl**

2nd half 20th century

100cm high

£500-800



304

**A composition stone bust of a girl, Princess Frederike of Prussia, 1797 after John Gottfried Schadow, Berlin**

on associated composition stone column pedestal

2nd half 20th century

145cm high

£150-250



305

**James Sherwood Westmacott: A carved white marble portrait bust of a gentleman signed James Sherwood Westmacott and dated 1855**

76cm high

£300-500



306

**A composition stone bust of a man**

2nd half 20th century

85cm high

£700-800

Online bidding via SummersPlace Live - register through [www.summersplaceauctions.com](http://www.summersplaceauctions.com)  
No surcharge (normal BP and VAT apply)



307

**A carved alabaster group  
of mother and child on  
garden seat**

Italian, circa 1900

46cm high by 58cm long

on associated carved  
serpentine rotating  
column pedestal with  
D-shaped top

123cm high

169cm high overall

£3,000-5,000



For details of our buyers premium which is added onto the hammer price together with any other applicable charges please refer to our guide for prospective buyers



308

**Peter Pan**

**After Frampton**

bronze coloured patina

late 20th century

88cm high

£800-1,200

Online bidding via SummersPlace Live - register through [www.summersplaceauctions.com](http://www.summersplaceauctions.com)  
No surcharge (*normal BP and VAT apply*)

126



309

**A composition stone  
figure of a diver**

on associated round  
pedestal

2nd half 20th century

149cm high

£800-1,000



310

**A composition stone  
figure of the Venus de  
Milo**

late 20th century

84cm high together with a  
**composition stone figure  
of spring** 78cms high

£150-250





311

† An over-life-size carved stone torso

century on associated base

120cm high

£200-400

312

▲ Jonathan Sells

Embracing family

carved Purbeck stone

152cm high overall

Jonathan is based in Corfe Castle, Dorset  
and a lot of his work is created in the  
local Purbeck and Portland Stone

£600-1,000



For details of our buyers premium which is added onto the hammer price together with any other applicable charges please refer to our guide for prospective buyers



313

**Patricia Peeters**

Born 1964

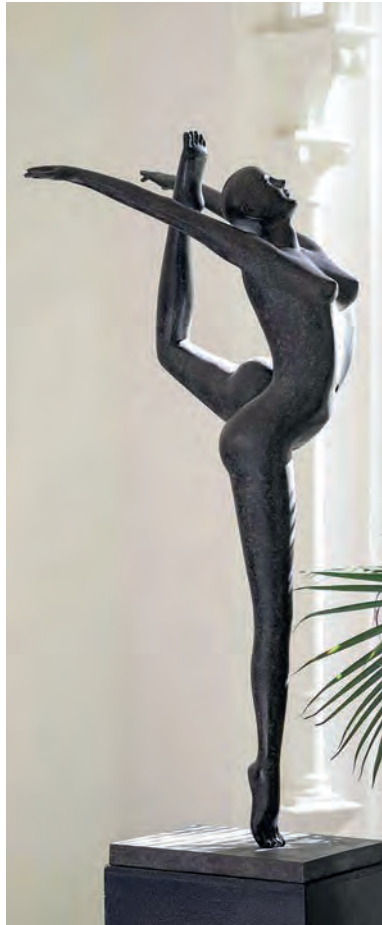
Wavering

Bronze

Edition of 75

20cm high, 61cm wide, 35cm deep

£3,000-4,000



314

**Patricia Peeters**

Born 1964

Devotion

Bronze

Signed and Numbered from an edition of 75

125cm high, 54cm wide, 40cm deep

£3,000-4,000



315

**Guy Buseyne**

Born 1961

Into Freedom

Bronze

Edition of 49

240cm high, 126cm wide, 85cm deep

£10,000-12,000

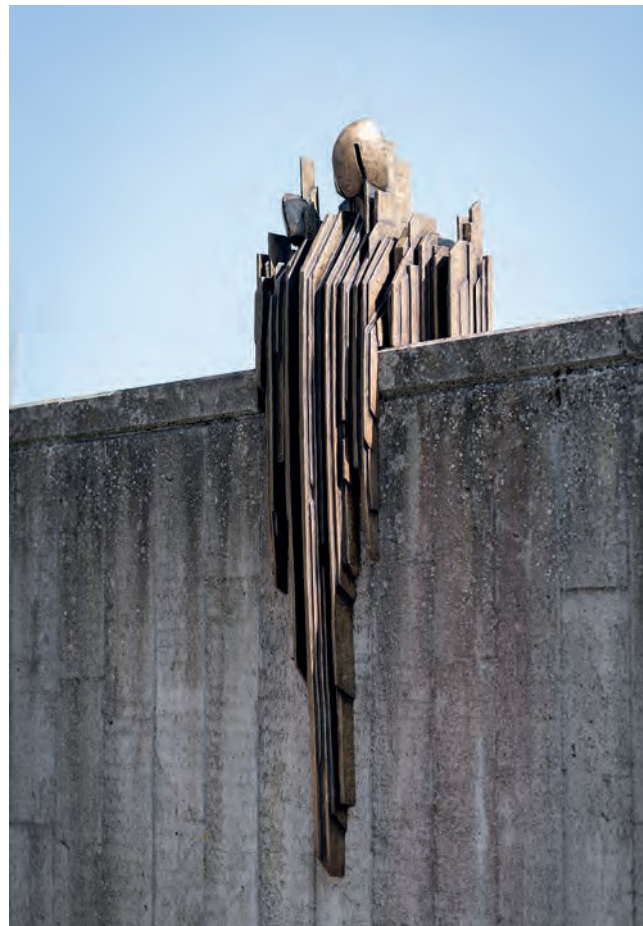
Online bidding via SummersPlace Live - register through [www.summersplaceauctions.com](http://www.summersplaceauctions.com)

No surcharge (*normal BP and VAT apply*)





316  
**Guy Buseyne**  
 Born 1961  
 The Wall  
 Bronze and Corten Steel  
 Signed and Numbered from an Edition of 49  
 169cm high by 141cm wide  
 £8,500-9,500



317  
**Guy Buseyne**  
 Born 1961  
 Colloquium  
 Bronze  
 Edition of 49  
 158cm high, 47cm wide, 38cm deep  
 £6,000-8,000

For details of our buyers premium which is added onto the hammer price together with any other applicable charges please refer to our guide for prospective buyers



318

**Guy Buseyne**

Born 1961

Elemental Force

Bronze

Edition of 49

103cm high, 70cm wide, 77cm deep

£7,000-9,000



319

**Nele Serpieters**

Born 1964

Modest

Bronze

Edition of 49

145cm high, 35cm wide, 65cm deep

£8,000-10,000

Online bidding via SummersPlace Live - register through [www.summersplaceauctions.com](http://www.summersplaceauctions.com)  
No surcharge (*normal BP and VAT apply*)



320

**Ann Vrielinck**

Born Belgium 1966

Ask

Bronze

Signed and Numbered 5  
from an Edition of 49

180cm long

£2,000-4,000



321

**Guy Buseyne**

Born 1961

Icarus

Bronze

Edition of 75

59cm high, 98cm wide,  
21cm deep

£5,000-6,000



For details of our buyers premium which is added onto the hammer price together with any other applicable charges please refer to our guide for prospective buyers



322

**Ann Vrielinck**

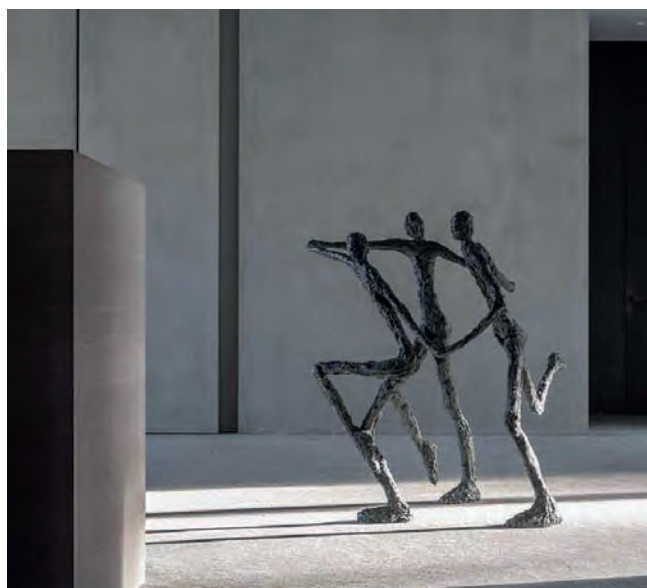
Arrange

Bronze

Signed and Numbered 5  
from an Edition of 43

69cm high, 220cm wide,  
70cm deep

£5,000-7,000



323

**Ann Vrielinck**

To Enjoy

Bronze

Edition of 49

94cm high, 104cm wide

123cm deep

£6,000-8,000



324

**Ann Vrielinck**

Team spirit

Bronze

Signed and Numbered  
from an edition of 49

126cm high, 135cm wide,  
30cm deep

£6,000-8,000

Online bidding via SummersPlace Live - register through [www.summersplaceauctions.com](http://www.summersplaceauctions.com)  
No surcharge (*normal BP and VAT apply*)

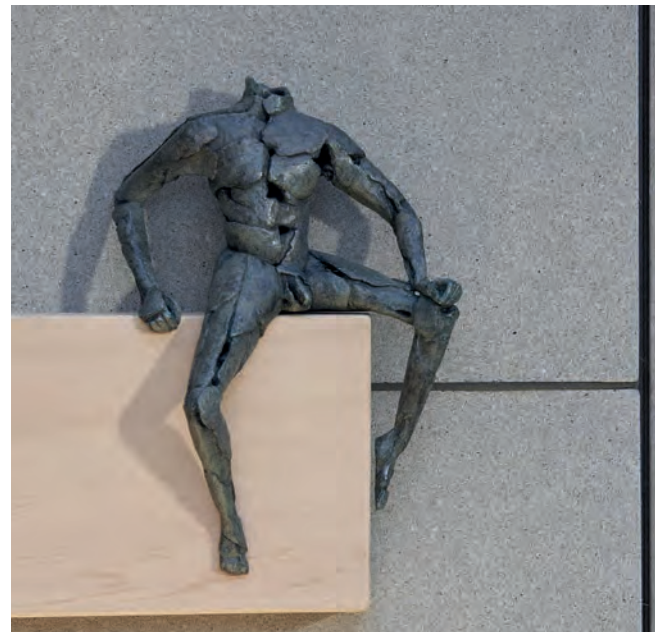




325  
**Guy Buseyne**  
 Samen  
 Bronze  
 Green patina  
 Signed Guy  
 65cm wide  
 £2,000-3,000



326  
**Anon**  
 Lady Godiva  
 Bronze  
 100cm high, 110cm wide,  
 27cm deep  
 £2,000-3,000



327  
**Guy Buseyne**  
 What Will Come  
 Bronze on Wood Mount  
 Signed and Numbered  
 from an Edition of 99  
 115cm high overall (Inc  
 plinth 19.5cm)  
 £800-1,200

For details of our buyers premium which is added onto the hammer price together with any other applicable charges please refer to our guide for prospective buyers



328

**Guy Buseyne**

Born 1961

Both Ways

Bronze on Wood Plinth

Signed and Numbered from an  
Edition of 75

59cm high (excl plinth) by 34cm  
wide

£2,000-3,000



329

**Le Bao**

Abstract Bronze  
signed *Le Bao*  
132cm high

£1,500-2,500



330

**Le Bao**

seated abstract female musician

Bronze

signed *le Bao*

88cm high

£700-1,000

Online bidding via SummersPlace Live - register through [www.summersplaceauctions.com](http://www.summersplaceauctions.com)  
No surcharge (*normal BP and VAT apply*)





331

**Steve Wood and Clive Morris**

Freedom

Bronze

Unique

3m high, 6m wide, 2m deep, 5 tonne

£200,000-400,000

For details of our buyers premium which is added onto the hammer price together with any other applicable charges please refer to our guide for prospective buyers



332

332

**Prosper Katanda**

Born 1982

Bubbling Waves

Springstone

Unique

130cm high, 60cm wide,  
20cm deep

£3,500-4,500

333

**Acrobat**

Washington Matafi

Spring stone

28cm high by 39cm  
wide by 33cm deep, with  
certificate of authenticity

Weight: approx. 25kg

£600-800



333



334

† **Elisabeth Whittaker**

Whale Fluke Resin

circa 1980's

50cm high by 85cm wide

£150-250

Online bidding via SummersPlace Live - register through [www.summersplaceauctions.com](http://www.summersplaceauctions.com)  
No surcharge (*normal BP and VAT apply*)





335

**Eighteen**

Bronze with green patina

Signed Guy

76cm high, 45cm wide, 32cm deep

£1,800-2,000



336

**Nineteen**

Bronze with a variegated green patination

Signed Guy

82cm high, 56cm wide, 45cm deep

£1,800-2,000



337

**Hongxun Jin**

Tessellation Marble

Unique

113cm high, 25cm wide,  
20cm deep

£1,200-1,800

For details of our buyers premium which is added onto the hammer price together with any other applicable charges please refer to our guide for prospective buyers



338

**John Cox**

Born 1952

A Pair of Red Deer Stags

Bronze with a variegated red-brown patination

110cm high, 260cm wide and 107cm high by 234cm wide

£25,000-30,000

Online bidding via SummersPlace Live - register through [www.summersplaceauctions.com](http://www.summersplaceauctions.com)

No surcharge (*normal BP and VAT apply*)



339

**John Cox**

Born 1952

Leaping Roe Deer Stag &  
Hind

Bronze

Life Size

126cm high, 106cm wide,  
35cm deep

£6,000-8,000



340

**John Cox**

Born 1952

Walking Gorilla

Bronze

110cm high, 125cm wide,  
70cm deep

£6,000-8,000



For details of our buyers premium which is added onto the hammer price together with any other applicable charges please refer to our guide for prospective buyers



341

**Brendan Hesmondhalgh**

Stand off Toads

Stoneware

Unique

69cm high, 94cm wide,  
29cm deep

£3,000-5,000

342

**John Cox**

Leaping Frog

Bronze with Foundry  
Stamp

55cm high, 73cm wide

£600-800

343

**John Cox**

Laying Hare

Bronze

Foundry Stamped

36cm high, 75cm wide

£600-800

344

**John Cox**

Boxing Hares

Bronze with foundry  
stamp

72cm high, 70cm wide

£1,200-1,800

Online bidding via SummersPlace Live - register through [www.summersplaceauctions.com](http://www.summersplaceauctions.com)  
No surcharge (*normal BP and VAT apply*)



345

**Penguin Family**

Bronze

82cm high, 100cm wide,  
50cm deep

£8,000-10,000



346

**Clever Monera**

Born Zimbabwe 1978

Leap Frog

Springstone

Unique

120cm high, 97cm wide,  
25cm deep

£10,000-12,000



For details of our buyers premium which is added onto the hammer price together with any other applicable charges please refer to our guide for prospective buyers





347

**John Cox**

The Olympic Gorilla

Bronze

182cmshigh, 107cm wide

£8,000-12,000



348

**Peter Walker**

Bird

Corten Steel

Unique

Signed

£12,000-15,000

Online bidding via SummersPlace Live - register through [www.summersplaceauctions.com](http://www.summersplaceauctions.com)  
No surcharge (*normal BP and VAT apply*)



349

**Jane K Jones**

Born 1936

The Dancers Bronze

Unique

Sculpture 175cm high,  
90cm wide, 90cm deep  
plinth 125cm high

£30,000-40,000



For details of our buyers premium which is added onto the hammer price together with any other applicable charges please refer to our guide for prospective buyers



350

**Wing Commander Guy  
Gibson VC, DFC (1918 -  
1944) The Heinkel He III  
Propeller**

Propeller on Steel Stand

Unique

370cm high, 275cm wide

£30,000-40,000

Online bidding via SummersPlace Live - register through [www.summersplaceauctions.com](http://www.summersplaceauctions.com)  
No surcharge (*normal BP and VAT apply*)



351

▲ **Geraldine Knight**  
**Indian Runner Duck**

Bronze

signed *Geraldine Knight*  
and numbered 7/20  
66cm high on fossil  
marble plinth  
114cm high overall on  
plinth

Geraldine Knight, 1932-2008 studied at the Brighton College of Art from 1949 to 1952 and then at the Royal Academy Schools from 1952 to 1956. After training to be sculptor, she was awarded the Prix de Rome scholarship, enabling her to spend two years in Italy. She subsequently produced a variety of sculptures and architectural decoration and her life size bronze animals include a flock of sheep, exhibited at the Royal Academy summer exhibition of 1986. As well as portrait busts and public sculpture, Knight worked on stage sets and contributed to building restoration projects. From 1960 she taught life drawing and sculpture at the Sir John Cass School of Art, Twickenham College of Technology and Kingston College of Art. In later life she lived and worked between Oxford and Venice.

£2,500-4,000



352

**Steve Boss**

Fall (Kingfisher)

Bronze

Limited Edition

32cm high, 29cm wide,  
5cm deep

£700-900

353

**After the Antique**

Ducks in the Bullrushes

Painted Bronze

90cm high, 120cm wide,  
90cm deep

£4,000-6,000

For details of our buyers premium which is added onto the hammer price together with any other applicable charges please refer to our guide for prospective buyers



354

**Andrew Sinclair**

Born 1961

The Minotaur

Bronze Resin

Signed with Foundry stamp

155cm high, 161cm wide,  
148cm deep

£20,000-30,000

Online bidding via SummersPlace Live - register through [www.summersplaceauctions.com](http://www.summersplaceauctions.com)  
No surcharge (*normal BP and VAT apply*)



355

**Andrew Sinclair**

Pre- Hysteric

Bronze Resin

Edition 1 of 5

340cm high, 410cm wide,  
130cm deep

£25,000-35,000



For details of our buyers premium which is added onto the hammer price together with any other applicable charges please refer to our guide for prospective buyers



356

**David Cooke**

Born 1970

Orangutan

Bronze on Stone Base

Edition 4 of 6

250cm high, 110cm wide, 62cm deep

£25,000-30,000

Online bidding via SummersPlace Live - register through [www.summersplaceauctions.com](http://www.summersplaceauctions.com)  
No surcharge (*normal BP and VAT apply*)

148



357

**Michael Kenny (1941–1999)**

Mickey

Portland Stone

Unique

57cm high, 76cm wide, 12cm deep

£4,000-6,000





## The Rod Vass Collection

Rod Vass is a professional visual artist who originally studied Fine Art at Newcastle and Sunderland Colleges of Art. He then worked as an Archaeological artist at Newcastle University before moving to London to pursue an art career.

Rod exhibited and sold paintings and began a parallel career as an illustrator, represented in London and New York. He also began to create 3D sculptural works for Film, TV and other clients.

In 1997 he formed Armordillo Ltd, where he pioneered and developed the use of sculpting with sprayed polyurethane resins and foams within the film industry, starting with 650 suits of armour for Ridley Scott's Oscar winning film *Gladiator*.

Since its inception, Armordillo has been engaged in research and development into a wide range of experimental sculptural processes. Along with their specialist team, Rod and Armordillo have created works for numerous well known film and TV projects.

For details of our buyers premium which is added onto the hammer price together with any other applicable charges please refer to our guide for prospective buyers

In recent years Rod has been joined by his son Louis Vass, who has added his artistic abilities and highly developed digital art skills to the Armordillo portfolio. His 3D designs have brought a high level of sophistication to the design process – enabling realistic 3D images of design work to be viewed in situ even before construction has begun. Their work ranges in scale from intricately detailed models to huge set pieces measuring thousands of square feet.

The current large sculptures at Summers Place reflect their interest in the combination of traditional artistic skills with the latest technology. Most of these sculptures started life as pieces created for Film, TV and live performance. All have been re-worked and re-purposed as freestanding statement pieces, suitable for outdoor or indoor display. The materials are relatively lightweight, allowing for easy installation in a range of locations. They are completely weatherproof and can be left outdoors indefinitely. Each piece has a makers plaque authenticating it as a genuine Rod Vass creation.

The artists are currently concentrating primarily on private commissions and are happy to consider proposals for sculptural designed pieces at any scale.



358

**A monumental  
polyurethane resin head**

244cm high

This and the following  
two heads were made for  
the TV series Beowulf

£3,000-5,000

Online bidding via SummersPlace Live - register through [www.summersplaceauctions.com](http://www.summersplaceauctions.com)  
No surcharge (*normal BP and VAT apply*)

150



359

**A monumental ultra high density  
polyurethane foam hand**

250cm high by 150cm wide by  
80cm deep

This was created for a gallery as a  
one off commission

£2,000-4,000





360

**A similar monumental polyurethane resin head**

with hollow back, originally for situating in  
around a tree  
244cm high

This was originally created for the TV series  
Beowulf

£3,000-5,000

For details of our buyers premium which is added onto the hammer price together with any other applicable charges please refer to our guide for prospective buyers



361

**A set of four polyurethane resin trees**

on iron stands the largest 400cm high

These were used in a number of productions, including  
the film Tolkien, War of the Worlds and the science  
fiction film, Intergalactic

£2,000-4,000





362

**A monumental  
polyurethane resin  
deconstructed hand**

240cm long by 165cm  
wide by 58cm deep

£2,000-3,000

363

**A set of four  
monumental resin  
dinosaur eggs**

These were used in an  
advert for Burberry  
the largest 76cm high by  
86cm wide

£2,000-3,000



364

**A polyurethane resin  
horse's head**

98cm high

This was made for the  
Tomb Raider film but was  
never used in production

£500-800

Online bidding via SummersPlace Live - register through [www.summersplaceauctions.com](http://www.summersplaceauctions.com)  
No surcharge (*normal BP and VAT apply*)





365

**A polyurethane resin stallion**

on iron frame base 230cm high by  
230cm long

This horse was made for the film Tomb  
Raider

£2,000-4,000

366

**A set of four monumental  
polyurethane resin dinosaur eggs**

the largest 80cm high by 120cm wide

These were used in an advert for  
Burberry

£2,000-3,000



For details of our buyers premium which is added onto the hammer price together with any other applicable charges please refer to our guide for prospective buyers





367

**A monumental  
polyurethane resin  
archway**

on iron frame

337cm high by 246cm  
wide

£2,000-4,000



368

**A polyurethane resin  
troll skull**

144cm wide

This was commissioned  
for Beowulf TV series

£300-500



369

**Three polyurethane resin  
spheres**

on iron stands the largest  
120cm diameter

These were originally  
commissioned for an  
installation at Chester Zoo  
and subsequently used in  
other TV productions

£1,500-2,500

Online bidding via SummersPlace Live - register through [www.summersplaceauctions.com](http://www.summersplaceauctions.com)  
No surcharge (*normal BP and VAT apply*)





370

**A monumental polyurethane resin head**

244cm high

From the TV series Beowulf

£3,000-5,000



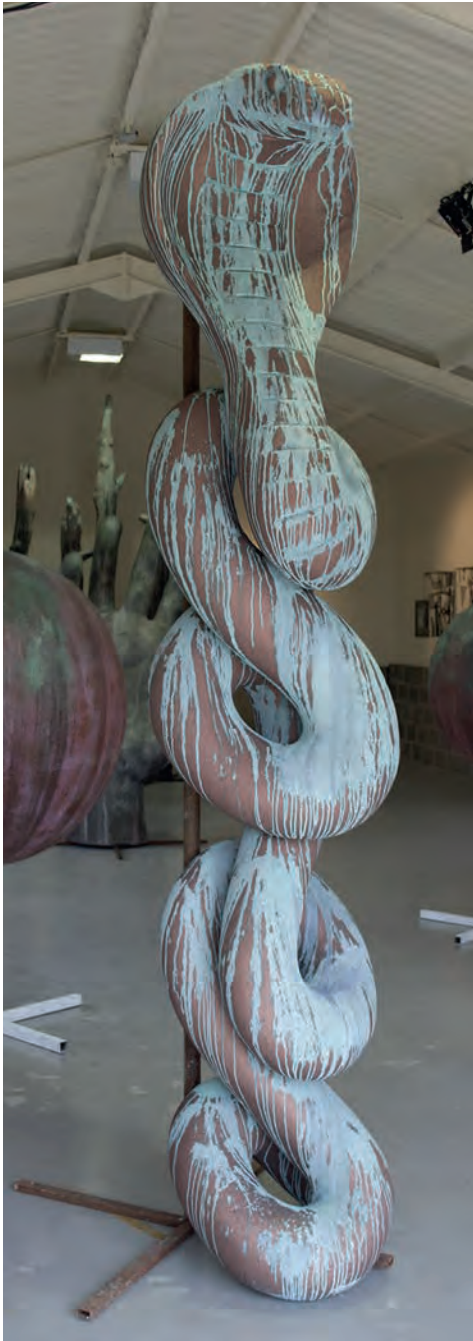
371

**A monumental polyurethane resin head**

in three-quarter section, with hanging fixtures  
185cm high by 144cm wide

£2,500-4,000

For details of our buyers premium which is added onto the hammer price together with any other applicable charges please refer to our guide for prospective buyers



372

**A monumental polyurethane resin cobra**

on iron frame 295cm high

This impressive cobra was made for a German live event Indian Circus

£3,000-5,000

373

**A monumental classical style polyurethane resin foot**

192cm high by 206cm wide

This can be displayed either horizontally or vertically on iron stand

This was commissioned for a video for the band London Grammar

£2,000-3,000

Online bidding via SummersPlace Live - register through [www.summersplaceauctions.com](http://www.summersplaceauctions.com)  
No surcharge (*normal BP and VAT apply*)



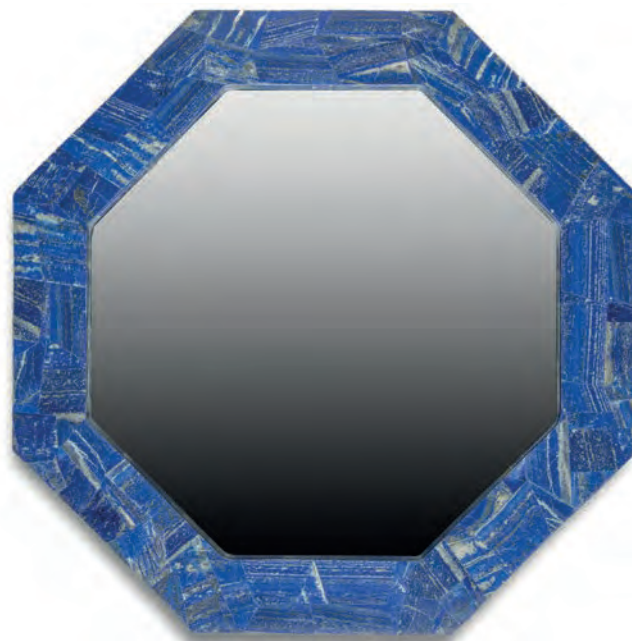


374

**A labradorite veneered  
circular table top**

70cm diameter

£1,000-1,500



375

**A lapis lazuli veneered  
octagonal mirror**

88cm wide

£500-1,000

376

**An unpolished lapis  
lazuli freeform**

Afghanistan

35cm high by 41cm wide  
by 22cm deep

40.8KG

£3,400-5,000



For details of our buyers premium which is added onto the hammer price together with any other applicable charges please refer to our guide for prospective buyers



377

**A set of six oval  
malachite bowls**  
with brass rims  
the largest 30cm diameter  
£600-800

380

**A set of six lapis lazuli  
veneered plates**  
each 25cm diameter  
£600-800

378

**A set of three circular  
malachite bowls**  
19cm diameter  
£500-800

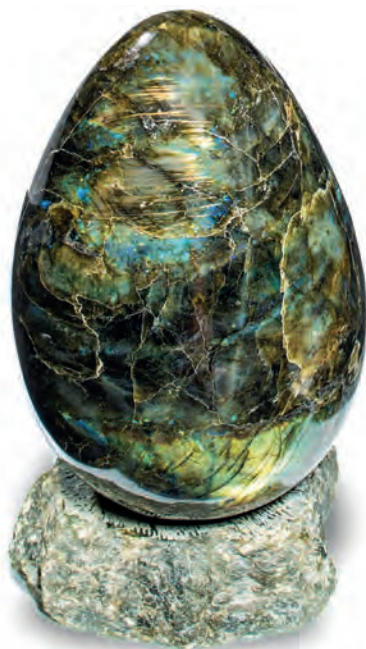
379

**A set of six mangano  
calicte bowls**  
each 12.5cm diameter  
£600-1000



Online bidding via SummersPlace Live - register through [www.summersplaceauctions.com](http://www.summersplaceauctions.com)  
No surcharge (*normal BP and VAT apply*)





381  
**A labradorite egg on stand**

Madagascar  
28cm high  
£750-1,000



383  
**A polished agate**

Brazil  
23cm high  
£250-400



382  
**An amethyst on metal stand**

10cm by 12cm by 24cm  
(dimensions include stand)  
£250-350

384  
**An amethyst table top**  
43cm by 37cm by 40cm  
(measurements without the glass)  
£600-800



For details of our buyers premium which is added onto the hammer price together with any other applicable charges please refer to our guide for prospective buyers



385

**A large petrified fossil  
wood slice**

Madagascar  
59cm wide

£500-800

386

**An amethyst section**

on metal stand  
36cm high

£450-550

387

**An apophyllite freeform**

India

45cm wide

£400-600

388

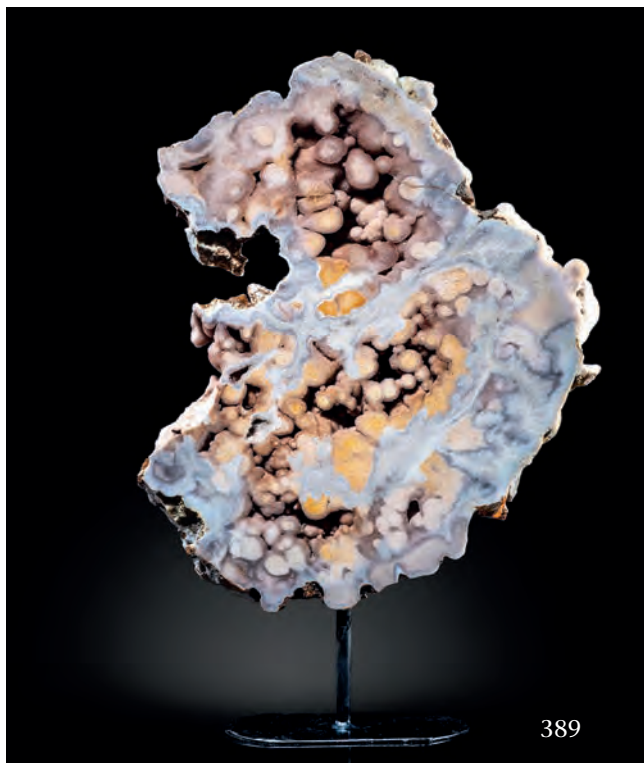
**A pair of agate slices**

mounted as wings  
50cm high

£500-800

Online bidding via SummersPlace Live - register through [www.summersplaceauctions.com](http://www.summersplaceauctions.com)  
No surcharge (*normal BP and VAT apply*)





389

**An amethyst 'cathedral' slice**

on metal stand  
58cm high overall  
£300-500



390

**A massive polished quartz freeform**

Madagascar  
83cm, 240kg  
£4,000-6,000

391

**An apophyllite specimen**

India  
23cm high  
£400-600



For details of our buyers premium which is added onto the hammer price together with any other applicable charges please refer to our guide for prospective buyers



392



394



395



392

**A collection of marble, onyx and mineral eggs**  
the largest 7cm in an alabaster bowl

£100-150

393

**A large blue agate freeform**

Madagascar

52cm high by 38cm wide

£600-1,000

394

**A collection of 25 mineral spheres**  
the largest 11cm diameter  
£100-200

395

**A collection of mineral specimens including a nephrite bowl**

10cm diameter

£100-150

Online bidding via SummersPlace Live - register through [www.summersplaceauctions.com](http://www.summersplaceauctions.com)  
No surcharge (*normal BP and VAT apply*)





396

**A 'pineapple' amethyst**

Brazil

20cm by 13m by 19cm

£400-600



397

**A malachite freeform**

Zaire

30cm by 25cm by 12cm

£750-850



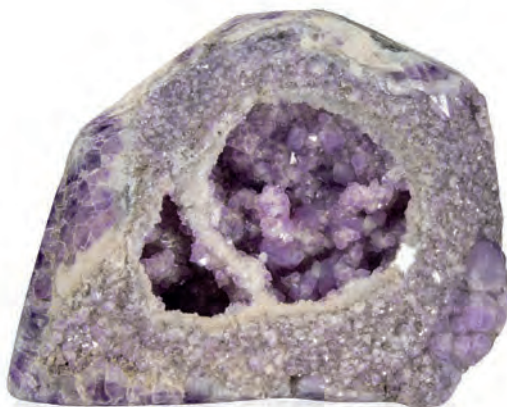
398

**A large quartz and haematoid geode**

45cm high by 48cm wide

£700-1,000

For details of our buyers premium which is added onto the hammer price together with any other applicable charges please refer to our guide for prospective buyers



402



399

**An unusual Druzy  
amethyst hollow**

Brazil

50cm by 44cm by 15cm

£1,200-1,600

400

**An amethyst freeform on  
metal stand**

Indonesia

28cm diameter

£1,000-1,500

401

**A septarian nodule**

30cm high, 20kg

£350-500

402

**An amethyst with calcite  
crystals**

23cm by 22cm by 14cm

£600-800

Online bidding via SummersPlace Live - register through [www.summersplaceauctions.com](http://www.summersplaceauctions.com)  
No surcharge (*normal BP and VAT apply*)





403

**A rose quartz and pink calcite freeform**

56cm high by 31cm wide,  
37.5kg

£700-1,000



404

**A large lapis lazuli veneered circular table top**

100cm diameter

£2,500-3,500

405

**A dog tooth spar calcite**

Missouri

36cm by 28cm by 13cm

£400-600



For details of our buyers premium which is added onto the hammer price together with any other applicable charges please refer to our guide for prospective buyers



406

**A framed copper 'splash'**

modern

76cm by 66cm

Made from glacial copper from Michigan, said to be the purest form of copper in the earth

£1,100-1,500

407

**A cobra jasper bowl**

India

34cm wide

£700-1,000

408

**A rectangular fossil wood table top**

95cm by 55cm

£700-1,000

Online bidding via SummersPlace Live - register through [www.summersplaceauctions.com](http://www.summersplaceauctions.com)  
No surcharge (*normal BP and VAT apply*)



409

**A fractured onyx bowl**

Mexico

64cm wide

£2800-3500



410

**A large aragonite specimen**

Morocco

92cm wide

£350-500



411

**An aragonite specimen**

Morocco

60cm

£350-500

412

**A malachite freeform**

Congo

20cm wide

£350-450

413

**An amethyst geode with calcite crystals**

Brazil

29cm by 27cm

£800-1,200

For details of our buyers premium which is added onto the hammer price together with any other applicable charges please refer to our guide for prospective buyers



414

**A cobra jasper sphere**

India

22cm diameter

£850-1,000

415

**A quartz geode in two halves**

together 55cm by 54cm

£700-1,000

416

**A collection of six semi precious stone spheres**

to include fruit jasper, moonstone, moss agate, serpentine and agate the largest 10cm diameter

£400-600



Online bidding via SummersPlace Live - register through [www.summersplaceauctions.com](http://www.summersplaceauctions.com)  
No surcharge (*normal BP and VAT apply*)





417

**A lapis lazuli veneered  
football**

20cm diameter

£600-1,000

418

**A large fossil wood  
sphere**

Indonesia 28cm diameter

A large fossil wood sphere

Indonesia

28cm diameter

£1,000-1,500

419

**A large fossil  
Lepidodendrom wood  
sphere**

Pennsylvania, USA,  
Carboniferous,

18cm diameter

Lepidodendrom was one  
of the commonest trees  
in the abundant forests of  
the carboniferous period  
but it is extremely rare to  
find an example with such  
fine detail

£500-700



418



419

For details of our buyers premium which is added onto the hammer price together with any other applicable charges please refer to our guide for prospective buyers



420



421



422



423

420

**Two fossil wood bowls**

Indonesia  
the larger 31cm wide

See website for extra image  
£600-1000

422

**A petrified wood platter**

Indonesia  
46cm diameter

£400-600

421

**A petrified wood platter**

Indonesia  
45cm diameter

£400-600

423

**Pyritised sand dollars**

Illinois, USA  
on metal stand  
62cm high overall

£350-500

Online bidding via SummersPlace Live - register through [www.summersplaceauctions.com](http://www.summersplaceauctions.com)  
No surcharge (normal BP and VAT apply)





424

**A large polished  
Phylloceras ammonite**

Madagascar, Triassic  
41cm

£1,200-1,400



425

**A large fossilised wood  
branch section**

Indonesia, Triassic  
79cm

£1,200-1,800



426

**A unusual fossil wood  
branch**

Burma, approx. 100 mya  
84cm long

£500-800



427

**A pair of petrified wood  
cubes**

Indonesia  
each 10cm square

£300-500

For details of our buyers premium which is added onto the hammer price together with any other applicable charges please refer to our guide for prospective buyers



428

**A very rare Cave Lion (*panthera spelaea*) skull**

Siberia (Russia), Pleistocene radio carbon dated to 48,000 years ago lacking lower jaw

30cm long by 20cm wide; teeth 4.2 cm (canines)

The extinct Cave Lion (*Panthera spelaea*) inhabited Europe until around 10,000 years ago. It is very distinct from the modern day lion and differences in the skull formation are marked, although undoubtedly the two

species are related. The species is scientifically well known, but its fossils are surprisingly uncommon. Some of these fossils have certainly been found in caves but perhaps the comparative rarity of the remains indicates that this was not their regular habitat. Complete skulls are surprisingly rare.

£15,000-25,000

Online bidding via SummersPlace Live - register through [www.summersplaceauctions.com](http://www.summersplaceauctions.com)

No surcharge (*normal BP and VAT apply*)





429

**A lioness full mount on rocky outcrop**

late 20th century

115cm high by 215cm long

£4,000-6,000

For details of our buyers premium which is added onto the hammer price together with any other applicable charges please refer to our guide for prospective buyers



430

**A set of four Ledot of Paris  
wall cases**

French, late 19th century

comprising a brace of  
woodcock, golden plover, red-  
legged partridge and thrushes  
58cm high

£500-800

Online bidding via SummersPlace Live - register through [www.summersplaceauctions.com](http://www.summersplaceauctions.com)  
No surcharge (*normal BP and VAT apply*)



A timed sale of contemporary Zimbabwean sculpture  
running from September 1st to the 23rd

to view and bid please visit [www.summersplaceauctions.com](http://www.summersplaceauctions.com)



Shepherd Adrino, Singing My Heart, 65cm high, £800-1,200

A timed sale of contemporary sculpture by Misti Leitz  
running from September 23rd Sept to 3rd October

to view and bid please go to our website [www.summersplaceauctions.com](http://www.summersplaceauctions.com)



The winning piece from Channel 4's Handmade: Britain's Best Woodworker  
I Weep for Nature by Misti Leitz





# Summers Place Auctions Ltd

**SALE NUMBER**  
270922

**SALE DATE**  
27 Sept, 2022

## IMPORTANT

Please note that the execution of written and telephone bids is offered as an additional service for no extra charge, and at the bidder's risk. It is undertaken subject to our other commitments at the time of the auction. We therefore cannot accept liability for failure to place such bids, whether through negligence or otherwise.

## NEW CLIENTS

Please note that we may contact you to Request a band reference. In addition we Will require sight of a government issued ID and proof of address prior to collection of purchases.

## FOR WRITTEN/FIXED BIDS

Bids will be executed for the lowest price as is permitted by other bids or reserve.

"Buy" or unlimited bids will not be accepted and we do not accept "plus one" bids. Please place bids in the same order as in the catalogue. Alternative bids can be placed by using the word "or" between lot numbers.

Where appropriate your written bids will be rounded down to the nearest amount consistent with the auctioneers bidding increments.

## FOR TELEPHONE BIDS

Please clearly specify the telephone number or back up mobile phone number on which you may be reached at the time of the sale, including the country code. We will call you from the saleroom shortly before your lot is offered. Telephone bids are operated on a first come first served basis as lines are limited.

Title \_\_\_\_\_  
First name \_\_\_\_\_ Last name \_\_\_\_\_  
Address \_\_\_\_\_  
\_\_\_\_\_  
Postcode \_\_\_\_\_  
Tel \_\_\_\_\_ Mobile \_\_\_\_\_  
Email \_\_\_\_\_ Fax \_\_\_\_\_

Please write clearly and place your bids as early as possible, as in the event of identical bids, the earliest bid received will take precedence. Bids should be submitted in (£) sterling at least 24 hours before the auction.

## LIVE AUCTION BIDDING FORM

Lot No.	Lot Description	Maximum Sterling price (excluding premium & VAT)

## TELEPHONE NUMBER DURING THE SALE (tel. bids only)

**I agree to be bound by Summers Place Auctions Ltd "Condition of Business" as published in the catalogue which govern all purchases at auction, and to pay the published Buyer's Premium on the hammer price plus any applicable taxes.**

I consent to the use of this information and any other information obtained by Summers Place Auctions.

I am aware that all telephone bid lines may be recorded.

Payment is due immediately after the sale in pounds sterling. Full details on how to pay are included in our Guide for Buyers. If you wish to pay for your purchases by card please complete the details below any your Card will be charged.

NAME ON CARD. ....
DEBIT CARD NUMBER. ....
EXPIRY DATE. ....
ISSUE NUMBER (SWITCH ONLY). .... 3 LAST DIGITS OF SECURITY CODE. ....

**Signed** \_\_\_\_\_ **Dated** \_\_\_\_\_

Please send this form by post to Summers Place Auctions Ltd, The Walled Garden, Stane Street, Billingshurst, West Sussex RH14 9AB

## GUIDE FOR ABSENTEE BIDDERS

If you are unable to attend an auction in person, you may give Summers Place Auctions Bid Department instructions to bid on your behalf by completing the form overleaf.

This service is free and confidential.

Please record accurately the lot numbers, descriptions and the top hammer price you are willing to pay for each lot.

We will try to purchase the lot(s) of your choice for the lowest price possible and never for more than the top amount you indicate.

“Buy” or unlimited bids will not be accepted.

Alternative bids can be placed by using the word “OR” between lot numbers.

Bids must be placed in the same order as in the catalogue.

This form should be used for one sale only - please indicate the sale number, title and date on the form.

Please place your bids as early as possible, as in the event of identical bids the earliest received will take precedence. Wherever possible bids should be submitted at least twenty-four hours before the auction.

Where appropriate, your bids will be rounded down to the nearest amount consistent with the auctioneer's bidding increments.

Absentee bids, when placed by telephone, are accepted only at the caller's risk and must be confirmed by letter or fax to the Bid Department on +44 (0)1403 331 340.

Please note that the execution of written bids is offered as an additional service for no extra charge at the bidder's risk and is undertaken subject to Summers Place Auctions other commitments at the time of the auction; Summers Place Auctions

therefore cannot accept liability for failure to place such bids, whether through negligence or otherwise.

Successful bidders will receive an invoice detailing their purchases and giving instructions for payment and clearance of goods.

All bids are subject to the conditions of business applicable to the sale, a copy of which is available from Summers Place Auctions. Conditions of Business particularly relevant to buyers are also set out in the sale catalogue.

We reserve the right to seek identification of the source of funds received.

In connection with the management and operation of our business and the marketing and supply of Summers Place Auctions Companies' services, or as required by law, we may ask clients to provide personal information about themselves or obtain information about clients from third parties (e.g. credit information). If clients provide Summers Place Auctions with information that is defined by law as "sensitive", they agree that Summers Place Auctions may use it for the above purposes. Summers Place Auctions will not use or process sensitive information for any other purpose without the client's express consent.

In order to fulfil the services clients have requested, Summers Place Auctions may disclose information to third parties (e.g. shippers). Some countries do not offer equivalent legal protection of personal information to that offered within the EU. It is Summers Place Auctions policy to require that any such third parties respect the privacy and confidentiality of our clients' information and provide the same level of protection for clients' information as provided within the EU, whether or not they are located in a country that offers equivalent legal protection of personal information.

By signing this Absentee Bid Form you agree to such disclosure. Clients will please note that for security purposes, Summers Place Auctions premises are subject to video recording. Telephone calls e.g. telephone bidding/voicemail messages may also be recorded.

Please mail up to  
26th September  
The Walled Garden, Summers Place,  
Billingshurst, West Sussex, RH14 9AB.

For Bids only:  
Tel. +44 (0)1403 331 331





# Summers Place Auctions Ltd

**SALE NUMBER**  
**SB280922**

**BIDS MUST BE RECEIVED BY**  
**28th Sept, 2022, 4PM BST**

### IMPORTANT

The winning bid will be the highest left on each lot above the reserve. Bids are non sequential and the highest bid left is the price at which the lot is sold plus buyers premium and any VAT liable. In the event of two identical winning bids being left on the same lot, the earliest received bid shall take precedence. Summers Place Auctions decision on which is the winning bid shall be final.

Clients wishing to bid on an "either or" basis should list the lots they are interested in with the price they are prepared to pay in order of preference with "OR" written between each one.

### NEW CLIENTS

Please note that we may contact you to Request a band reference. In addition we Will require sight of a government issued ID and proof of address prior to collection of purchases.

Title \_\_\_\_\_  
First name \_\_\_\_\_ Last name \_\_\_\_\_  
Address \_\_\_\_\_  
\_\_\_\_\_ Postcode \_\_\_\_\_  
Tel \_\_\_\_\_ Mobile \_\_\_\_\_  
Email \_\_\_\_\_ Fax \_\_\_\_\_

Please write clearly and place your bids as early as possible, as in the event of identical bids, the earliest bid received will take precedence. Bids should be submitted in (£) sterling at least 24 hours before the auction.

### SEALED BIDDING FORM

Lot No.	Lot Description	Maximum Sterling price (excluding premium & VAT)

**I agree to be bound by Summers Place Auctions Ltd "Condition of Business" as published in the catalogue which govern all purchases at auction, and to pay the published Buyer's Premium on the hammer price plus any applicable taxes.**

I consent to the use of this information and any other information obtained by Summers Place Auctions.

I am aware that all telephone bid lines may be recorded.

Payment is due immediately after the sale in pounds sterling. Full details on how to pay are included in our Guide for Buyers. If you wish to pay for your purchases by card please complete the details below any your Card will be charged.

NAME ON CARD. ....
DEBIT CARD NUMBER. ....
EXPIRY DATE. ....
ISSUE NUMBER (SWITCH ONLY). .... 3 LAST DIGITS OF SECURITY CODE. ....

**Signed** \_\_\_\_\_ **Dated** \_\_\_\_\_

## GUIDE FOR ABSENTEE BIDDERS FOR SEALED BID AUCTION

### SEALED BID AUCTION LOTS 100-430

All sealed bids must be with us, at the latest, by 30th March 4.00pm BST since the bids will be opened on the 31st March. The winning bid will be the highest left on each lot above the reserve. Bids are non sequential and the highest bid left is the price at which the lot is sold plus buyers premium and any VAT liable. In the event of two identical winning bids being left on the same lot, the earliest received bid shall take precedence. Summers Place Auctions decision on which is the winning bid shall be final. Winning bidders will be invoiced after the bids are opened.

Sealed bids, when placed by telephone, are accepted only at the caller's risk and must be confirmed by letter or e-mail to the Bid Department.

Successful bidders will receive an invoice detailing their purchases and giving instructions for payment and clearance of goods.

All bids are subject to the conditions of business applicable to the sale, a copy of which is available from Summers Place Auctions. Conditions of Business particularly relevant to buyers are also set out in the sale catalogue.

We reserve the right to seek identification of the source of funds received.

In connection with the management and operation of our business and the marketing and supply of Summers Place Auctions Companies' services, or as required by law, we may ask clients to provide personal information about themselves or obtain information about clients from third parties (e.g. credit information). If clients provide Summers Place Auctions with information that is defined by law as "sensitive", they agree that Summers

Place Auctions may use it for the above purposes. Summers Place Auctions will not use or process sensitive information for any other purpose without the client's express consent.

In order to fulfil the services clients have requested, Summers Place Auctions may disclose information to third parties (e.g. shippers). Some countries do not offer equivalent legal protection of personal information to that offered within the EU. It is Summers Place Auctions policy to require that any such third parties respect the privacy and confidentiality of our clients' information and provide the same level of protection for clients' information as provided within the EU, whether or not they are located in a country that offers equivalent legal protection of personal information. By signing this Sealed Bid Form you agree to such disclosure. Clients will please note that for security purposes, Summers Place Auctions premises are subject to video recording. Telephone calls e.g. telephone bidding/voicemail messages may also be recorded.

Please mail up to  
28th Sept 2022 4.00pm BST  
The Walled Garden, Summers Place,  
Billingshurst, West Sussex, RH14 9AB.

For Bids only:  
Tel. +44 (0)1403 331 331

Email  
sealedbids@summersplaceauctions.com





**Sp**  
**SUMMERS PLACE**  
**AUCTIONS**



THE WALLED GARDEN  
SUMMERS PLACE  
BILLINGSHURST  
WEST SUSSEX  
RH14 9AB  
+44(0)1403 331 331

[www.summersplaceauctions.com](http://www.summersplaceauctions.com)