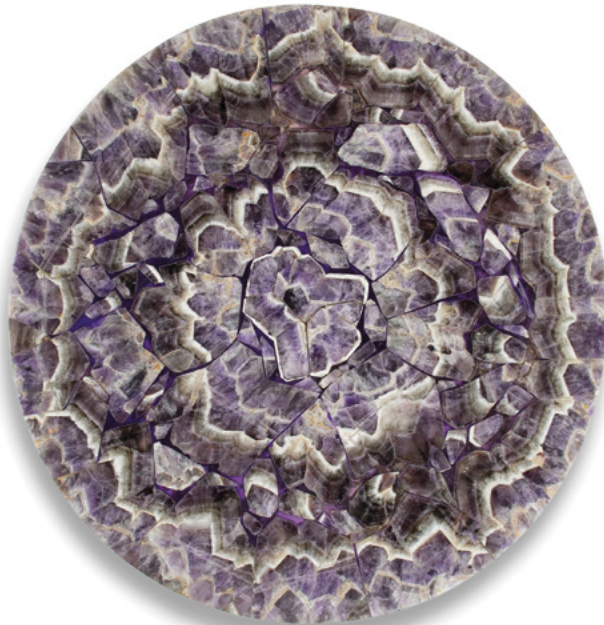


Sp
SUMMERS PLACE
AUCTIONS



THE WALLED GARDEN
SUMMERS PLACE
BILLINGSHURST
WEST SUSSEX
RH14 9AB
+44(0)1403 331 331

www.summersplaceauctions.com



Summers Place Auctions Ltd

SALE NUMBER GS300322

BIDS MUST BE RECEIVED BY
30th March, 2022, 4PM BST

IMPORTANT

The winning bid will be the highest left on each lot above the reserve. Bids are non sequential and the highest bid left is the price at which the lot is sold plus buyers premium and any VAT liable. In the event of two identical winning bids being left on the same lot, the earliest received bid shall take precedence. Summers Place Auctions decision on which is the winning bid shall be final.

Clients wishing to bid on an “either or” basis should list the lots they are interested in with the price they are prepared to pay in order of preference with “OR” written between each one.

New Clients

Please note that we
May contact you to request a bank
reference. In addition we will
Require sight of a government
Issued ID and proof of address
prior to collection of purchases

Title	
First name	Last name
Address	
Postcode	
Tel	Mobile
Email	Fax

Please write clearly and place your bids as early as possible, as in the event of identical bids, the earliest bid received will take precedence. Bids should be submitted in (£) sterling at least 24 hours before the auction closes.

SEALED BIDDING FORM

Lot No.	Lot Description	Sealed bid Sterling price (excluding premium & VAT)

I agree to be bound by Summers Place Auctions Ltd “Condition of Business” as published in the catalogue which govern all purchases at auction, and to pay the published Buyer’s Premium on the hammer price plus any applicable taxes.

I consent to the use of this information and any other information obtained by Summers Place Auctions
I am aware that all telephone bid lines may be recorded.

Payment is due immediately after the sale in pounds sterling. Full details on how to pay are included in our Guide for Buyers. If you wish to pay for your purchases by card please complete the details below and your Card will be charged.

NAME ON CARD.....
DEBIT CARD NUMBER.....
EXPIRY DATE.....
ISSUE NUMBER.....(SWITCH ONLY) 3 LAST DIGIT OF SECURITY CODE

Signed _____ Dated _____

GUIDE FOR ABSENTEE BIDDERS FOR SEALED BID AUCTION

SEALED BID AUCTION LOTS 100-447

All sealed bids must be with us, at the latest, by 30th March 4.00pm BST since the bids will be opened on the 31st March. The winning bid will be the highest left on each lot above the reserve. Bids are non sequential and the highest bid left is the price at which the lot is sold plus buyers premium and any VAT liable. In the event of two identical winning bids being left on the same lot, the earliest received bid shall take precedence. Summers Place Auctions decision on which is the winning bid shall be final. Winning bidders will be invoiced after the bids are opened.

Sealed bids, when placed by telephone, are accepted only at the caller's risk and must be confirmed by letter or e-mail to the Bid Department.

Successful bidders will receive an invoice detailing their purchases and giving instructions for payment and clearance of goods.

All bids are subject to the conditions of business applicable to the sale, a copy of which is available from Summers Place Auctions. Conditions of Business particularly relevant to buyers are also set out in the sale catalogue.

We reserve the right to seek identification of the source of funds received.

In connection with the management and operation of our business and the marketing and supply of Summers Place Auctions Companies' services, or as required by law, we may ask clients to provide personal information about themselves or obtain information about clients from third parties (e.g. credit information). If clients provide Summers Place Auctions with information that is defined by law as "sensitive", they agree that Summers

Place Auctions may use it for the above purposes. Summers Place Auctions will not use or process sensitive information for any other purpose without the client's express consent.

In order to fulfil the services clients have requested, Summers Place Auctions may disclose information to third parties (e.g. shippers). Some countries do not offer equivalent legal protection of personal information to that offered within the EU. It is Summers Place Auctions policy to require that any such third parties respect the privacy and confidentiality of our clients' information and provide the same level of protection for clients' information as provided within the EU, whether or not they are located in a country that offers equivalent legal protection of personal information. By signing this Sealed Bid Form you agree to such disclosure. Clients will please note that for security purposes, Summers Place Auctions premises are subject to video recording. Telephone calls e.g. telephone bidding/voicemail messages may also be recorded.

Please mail up to
30th MAR 2022 4.00pm BST
The Walled Garden, Summers Place,
Billingshurst, West Sussex, RH14 9AB.

For Bids only:
Tel. +44 (0)1403 331 331

Email
sealedbids@summersplaceauctions.com

Sealed Bid Auction Lots 100-447

All sealed bids must be with us, at the latest by 4pm BST on the 30th March since the bids will be opened on the 31st March. The winning bid will be the highest left on each lot above the reserve. Bids are non sequential and the highest bid left is the price at which the lot is sold plus buyers premium and any VAT liable. In the event of two identical winning bids being left on the same lot, the earliest received bid shall take precedence. Summers Place Auctions decision on which is the winning bid shall be final. Winning bidders will be invoiced after the bids are opened. For further information on sealed bids and how they work see our conditions of business.



100

A pair of wrought iron gates and uprights

early 20th Century

with brass makers plaque stamped '*Made by C. Henshaw, Edinburgh*'

the gates 287cm high by 360cm wide, the uprights each 284cm high by 33cm wide

1920 by William Sears, a shoe manufacturer for Westone Manor in Northampton, Northamptonshire, which was built in 1914. The company Charles Henshaw and sons was established in Edinburgh 1904 and amongst other work, undertook casting work for the Scottish National War memorial. The firm was also responsible for the memorial located at the Moray Golf club in Lossiemouth.

£3,000-5,000

Provenance: The gates were commissioned in about

For details of our buyers premium which is added onto the hammer price together with any other applicable charges please refer to our guide for prospective buyers



101
A Georgian Adam period lead
glazed lunette fanlight in wooden
frame

circa 1770
frame 56cm high by 136cm wide

£80-120



102
A set of three Victorian cast iron
balcony fronts

circa 1870
42cm high by 130cm long

£600 -800



103
A wrought iron panel

French, late 19th early 20th century
56cm high by 120cm wide

£200-300



104
A pair of cast iron window boxes

late 19th century
with later zinc liners
172cm by 36cm deep

£400-600

Online bidding via SummersPlace Live - register through www.summersplaceauctions.com
No surcharge (*normal BP and VAT apply*)



105
A pair of wooden gates

Indian
20th century
130cm by 110cm high

£300-500

106
**A pair of impressive
brass/bronze wall
lanterns with cast iron
brackets**

Italian, late 19th century
124cm high

£2,500-4,000



106

107

107
A similar pair of lights

£2,500-4,000

108
**A set of three Victorian
cast iron brackets**

circa 1870
each 105cm by 150cm

£300-500



For details of our buyers premium which is added onto the hammer price together with any other applicable charges please refer to our guide for prospective buyers



109
A pair of large
composition stone
balls

modern
52cm diameter

£1,200-1,800

111
† A pair of carved
sandstone wall con-
soles

modern
77cm high

£200-400

110
A pair of unusual
cast iron Griffin
terminals

late 19th century
43cm high by 46cm
long

£200-300

Online bidding via SummersPlace Live - register through www.summersplaceauctions.com
No surcharge (*normal BP and VAT apply*)

112

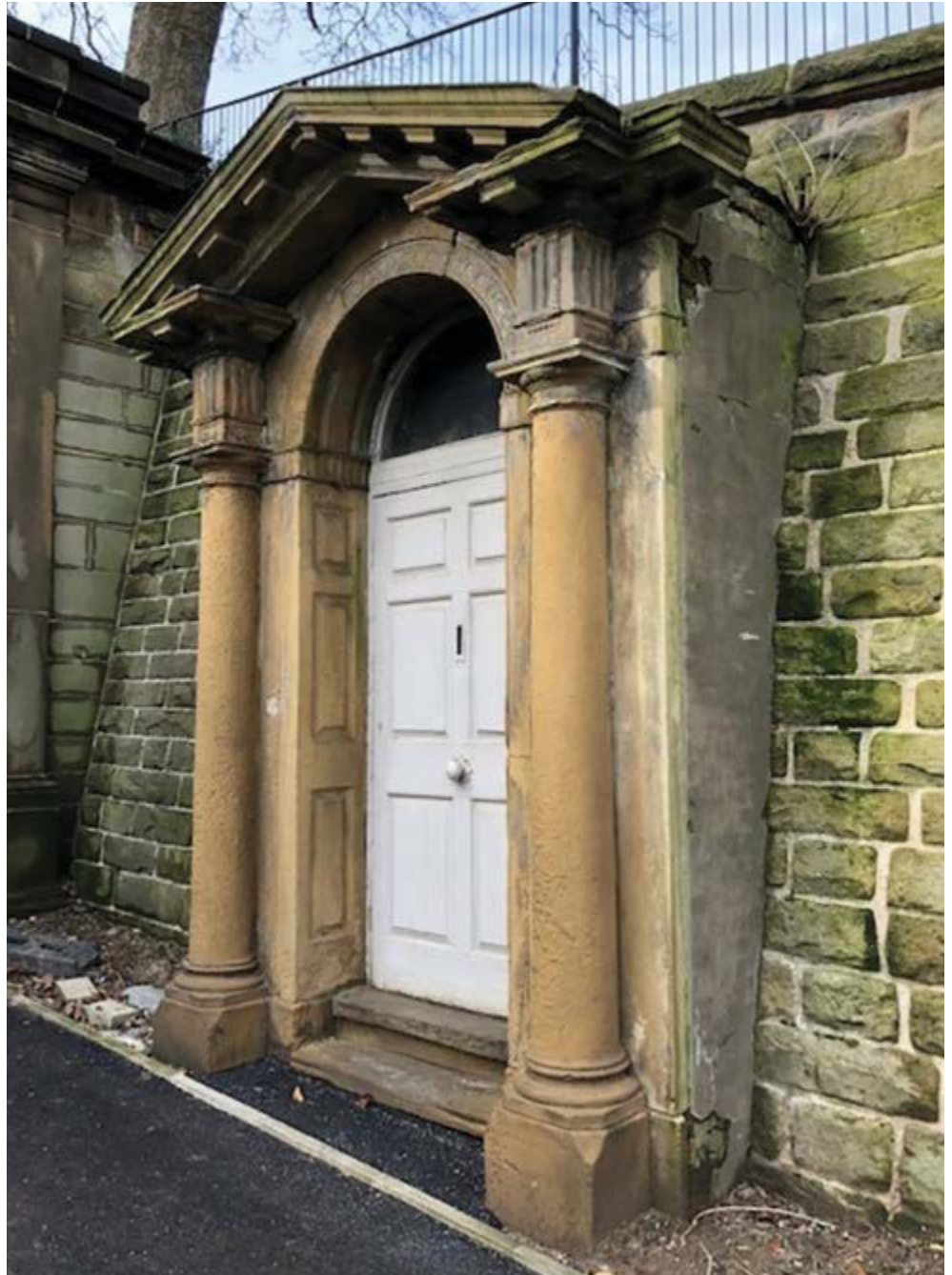
An historic Georgian carved sandstone door surround and painted pine door

3rd quarter of the 18th century
removed from the town wall in the grounds of Nottingham Castle
400cm high by 303cm wide

This impressive door surround was recently removed from the grounds of Nottingham Castle where it was moved circa 1913. It formally formed part of the streetscape of what is now the St James Hotel. Carved in the local sandstone in classical Georgian style

Please see our website for further details and pictures, including a full report on the entranceway commissioned by Nottingham City Council

£1,500-2,500



For details of our buyers premium which is added onto the hammer price together with any other applicable charges please refer to our guide for prospective buyers



113

An impressive Empire Style ormolu mounted mahogany panelled room

circa 1880

with later associated painted canvas ceiling panel ensuite
two elements to door furniture handles stamped 'Bricard'
the room approximately 533cm long by 456cm wide by
332cm high

Provenance for the room panelling:

Villa Raymond Poincaré, Villa la Pins, Eze, France

Sold Christies New York 24th September 1998, lot 261,
sold after the sale for \$222,500 inclusive of the buyer's
premium.

Christies London, 18th March 2004, Lot 79

The painted canvas ceiling acquired separately

This sumptuously appointed panelled room, by
provenance originally in the villa of Raymond Poincaré,
ex President of France has recently been in use as the
boardroom of a company in a central London office
block. It has been professionally dismantled and
carefully packed up ready for transport to its new home.
The ormolu mounts are of the highest quality and since
many of the components, including the four large
ormolu mounted mahogany panels are identical in size
it can be adapted to a different configuration. The ceiling
canvas, (now removed and rolled up) is attached to a
stretcher framework inside a gilt embellished painted
frame and is raised and lowered on a pulley system for
ease of installation.

The house of Bricard founded in 1782, and recorded as
an ébéniste and miroitier working at 9 Rue Neuve-Guil-
lemin after 1853, still specialise in making very high
quality locks and door furniture.

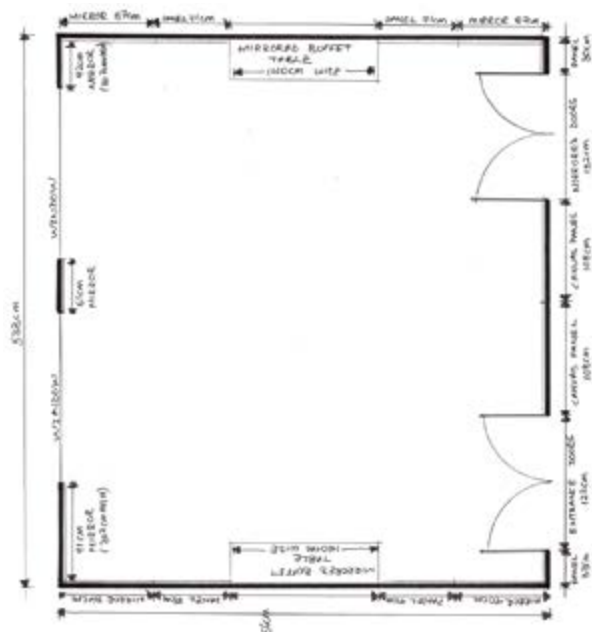
Further images including a plan of the room, and a 360
degree interactive scan can be viewed on our website.

<https://my.matterport.com/show/?m=9o5qP8bDgpK>

£60,000-100,000



Online bidding via SummersPlace Live - register through www.summersplaceauctions.com
No surcharge (*normal BP and VAT apply*)



For details of our buyers premium which is added onto the hammer price together with any other applicable charges please refer to our guide for prospective buyers



116
**A pair of stained glass
panelled doors**

late 19th/early 20th century
in metal frames
162cm high by 41cm wide

£600-1,000

117
**A collection of three ensuite
leaded stained glass panels**

circa 1900
each in wooden frames
142cm high by 80cm
92cm high by 79cm
77cm high by 80cm inc.

For further images visit our
website

£1,000-1,500



114
**A suite of four stained glass
leaded panels**

early 20th century
each signed *L Avenet*
250cm high,
one pair 52cm wide, the other pair
in wooden frames 29cm wide

£2,000-4,000

115
**A leaded and stained glass
arched rectangular panel**

circa 1900, 92cm high by 90cm
wide
£300-500

Online bidding via SummersPlace Live - register through www.summersplaceauctions.com
No surcharge (*normal BP and VAT apply*)

118

**A pair of Art Deco
carved Portland stone
plaques**

circa 1920
carved in relief with
stylised lion heads
45cm high by 46cm wide
by 23cm deep

£1,000-1,500

119

A similar pair
£1,000-1,500

120

A similar pair
£1,000-1,500

121

A similar pair
£1,000-1,500

122

A similar pair
£1,000-1,500

123

A similar pair

£1,000-1,500

124

A similar pair

£1,000-1,500

125

A similar pair

£1,000-1,500

For details of our buyers premium which is added onto the hammer price together with any other applicable charges please refer to our guide for prospective buyers



126

A similar pair
£1,000-1,500

127

A similar pair

45cm high by 46cm wide
depth 11cm deep
*Slightly thinner than the
other lots*

£1,000-1,500



129



130

128

A rare set of six graduated steel bells by Naylor & Vickers of Sheffield

circa 1860

some with indistinct stamps obscured by paint
largest 100cm high by 126cm diameter, smallest
65cm high by 70cm diameter

This rare set of six graduated cast steel bells, although indistinctly stamped were almost certainly produced by the Sheffield firm of Naylor Vickers. Included in the lot is a report dated 1975 giving a detailed report on the bells which are believed to have originally hung in St Andrew's Church, Stainland, Yorkshire.

The Sheffield, England, Steel manufactory of Naylor, Vickers & Co. (later Vickers Sons & Co. but commonly referred to as simply "Naylor Vickers"), has long been known for the cast steel bells which it produced in the mid to late 19th century. They also established an outlet in North America and exported to other countries.

Online bidding via SummersPlace Live - register through www.summersplaceauctions.com
No surcharge (*normal BP and VAT apply*)

The tonal quality of steel rather than bronze, or bell metal, as it was also known, was far inferior and as such steel bells were never produced in large quantities. As such, it is rare to find an original ring of six cast steel bells, which have a visually decorative “appeal” rather than a functional one.

£1,500-2,500

129
Two elm and iron mounted ecclesiastical bell headstocks

18th century or earlier
44cm high by 112cm wide

£300-500

130
A similar elm and iron mounted ecclesiastical bell headstock

and another smaller bell headstock
the smaller 30cm high by 81cm wide

£200-400



131
A substantial Victorian cast iron boot scraper

on York stone base
144cm high, the base
63cm by 72cm

£500-800



132
A Victorian wrought iron weathervane

late 19th century
With direction indicators
306cm high

£500-800



133
An aluminium bird table

20th century
171cm high

£500-800

For details of our buyers premium which is added onto the hammer price together with any other applicable charges please refer to our guide for prospective buyers



134
A steel tree guard

modern
165cm high

£400-600

135
A substantial composition stone Green Man fountain mask

second half 20th century
74cm high by 42cm wide
by 47cm deep

£600-1,000



136
A pair of steel tree guards

modern
165cm high

£800-1,200

137
A pair of cast iron lion and unicorn boot scrapers

late 19th/early 20th
century

56cm wide

£250-400

138
A substantial wrought & cast iron boot scraper

first half of 19th century
31cm high by 51cm wide

£300-500



139

† A hand carved sandstone
Rotunda with domed wrought
iron roof

late 20th century
420cm high by 260cm wide by
260cm deep

£12,000-15,000



For details of our buyers premium which is added onto the hammer price together with any other applicable charges please refer to our guide for prospective buyers



140
A natural carved sandstone henge
 now fitted in cast iron circular planter
 200cm high
 £600-1,000



141
A pair of impressive wrought and cast iron architectural fittings
 19th century
 possibly from a bridge
 150cm high
 £1000-1500



142
An horology plaque
 19th century
 61cm high
 £500-700

Online bidding via SummersPlace Live - register through www.summersplaceauctions.com
 No surcharge (*normal BP and VAT apply*)



143
**A bronze British Rail
Level Crossing bell**

signed
19th century

£500-700

144
A cast iron log box
stamped *Hadley & Edwards,*
Cambridge
82cm long

£400-600



145
**A collection of garden
tools**
including a lawnmower,
trugs and three zinc
watering cans, together
with two unusual
wickerwork dickie
automobile seats with
hinged bases enclosing a
picnic box compartment

Provenance; Ex the Seago
collection. See footnote to
lot 12

£150-250



For details of our buyers premium which is added onto the hammer price together with any other applicable charges please refer to our guide for prospective buyers



146
**A carved stone
staddlestone**

the top now inverted as
a bird bath, 70cm high
Provenance; Ex the Seago
collection. See footnote to
lot 12

£120-180

147
**A rare Regency reeded
three tier wrought iron
plant stand**

early 20th century
122cm long

£600-1,000

148
**A rare wooden sledge on
mounts**

Russian or eastern
European, 19th century
with leather upholstery
and iron mounts, together
with horse neck harness
196cm high by 230cm
long

£600-1,000



Online bidding via SummersPlace Live - register through www.summersplaceauctions.com
No surcharge (*normal BP and VAT apply*)



149
An historic full size
mahogany billiard table
by Thurston and Co

circa 1913

with applied makers
 plaque

85.5cm high by 384cm
 long by 204cm wide

£3000-5000

Provenance: Removed
 from Admiralty Arch,
 Whitehall. This iconic
 London building at the
 opposite end of the Mall
 to Buckingham Palace

was commissioned by
 King Edward VII in memory
 of his mother, Queen
 Victoria, and designed
 by Aston Webb. Completed
 in 1912, in the past, it
 served as residence of
 the First Sea Lord and was
 used by the Admiralty.

Until 2011, the building
 housed government offices.
 In 2012, the government
 sold the building on a 125-
 year lease for £60m for a
 proposed redevelopment
 into a Waldorf
 Astoria luxury hotel and
 four apartments.

The firm of Thurston and
 Co was established in 1799
 and have been leading
 manufacturers of snooker
 and billiard tables since
 as well as being granted
 four consecutive Royal
 Warrants from William IV
 to George V. The company
 still holds records of all
 the tables made and have
 confirmed that this table
 was made in 1913 but
 that unlike virtually every
 other table made, the
 name of the purchaser
 is blank in their records.
 One can only assume that
 since it was made for the
 residence of the First Sea

lord at Admiralty Arch,
 there was a degree of
 secrecy involved.

When it was installed, the
 First Sea Lord between
 1912-1914 was Prince
 Louis of Mountbatten,
 father of Earl Mount-
 batten who held the
 same appointment from
 1955-1959. The roll call
 of First Sea Lords during
 the 20th century encom-
 passes many well known
 historical figures and one
 can only speculate who
 else may have played on
 this table.

For details of our buyers premium which is added onto the hammer price together with any other applicable charges please refer to our guide for prospective buyers



150
A terracotta bird bath

early 20th century
104cm high

£400-600



151
A composition stone obelisk

late 20th century
166cm high

£600-1,000



152
A Brèche marble column

late 18th century/early
19th century
112cm high

£300-500



153
A substantial carved sandstone column pedestal

modern
136cm high by 60cm
diameter at top

£800-1,000

Online bidding via SummersPlace Live - register through www.summersplaceauctions.com
No surcharge (*normal BP and VAT apply*)



154
**An unusual faux bois
composition stone bowl
on stand**

French
mid 20th century
96cm high by 77cm
diameter

£300-500



155
**A pair of composition
stone urns on pedestals**

modern
126cm high by 110cm
wide

£1,500-2,500



156
**A pair of unusual
offset double handled
terracotta pots**

late 19th/early 20th
century
53cm high

£150-250

For details of our buyers premium which is added onto the hammer price together with any other applicable charges please refer to our guide for prospective buyers



157

157
A pair of composition
stone planters

20th century
130cm diameter

£1,500-2,000



158

158
A pair of composition
stone planters

second half of the 20th
century
92cm

£1,000-1,500



159

159
† A pair of carved sand-
stone shallow bowls

modern
44cm diameter

£500-800



160

A pair of composition stone planters

on feet
modern
103cm wide

£500-800

161

A carved limestone trough

58cm high by 135cm long by 77cm
deep

£1,800-2,500

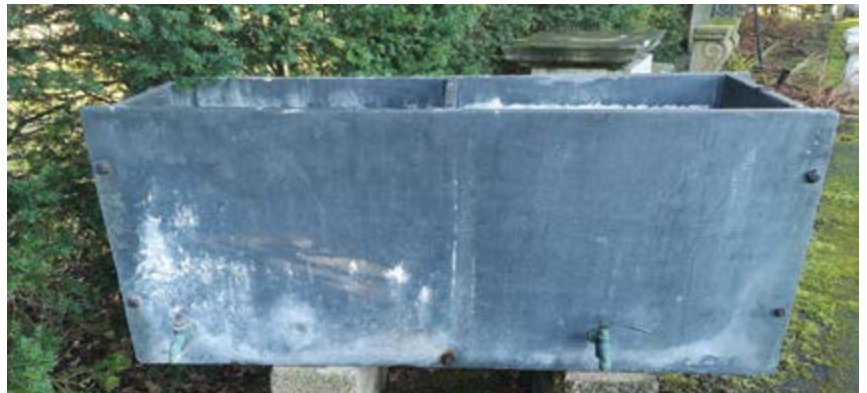


162

A carved slate trough

19th century
with iron mounts and with internal
divider
together with two bronze taps
62cm high by 152cm long by 46cm
deep

£500-800



For details of our buyers premium which is added onto the hammer price together with any other applicable charges please refer to our guide for prospective buyers



163
A pair of stoneware urns on pedestals

late 19th century
95cm high

£200-400

164
† A pair of carved sandstone lug pots
modern
74cm high

£800-1,200

165
A terracotta oil storage jar
Mediterranean
19th century
80cm high

£300-500



Online bidding via SummersPlace Live - register through www.summersplaceauctions.com
No surcharge (*normal BP and VAT apply*)



166
A pair of terracotta
basket weave planters

late 19th century
46cm high

£150-250

167
A Compton style
terracotta scroll pot
mid 20th century
40cm high by 62cm wide

Provenance; Ex the Seago
collection. See footnote to
lot 12

£250-400



168
A pair of large
composition stone
planters

modern
76cm high by 100cm
diameter

£2,000-3,000

169
A pair of composition
stone finials

modern
85cm high

£1,500-2,500



For details of our buyers premium which is added onto the hammer price together with any other applicable charges please refer to our guide for prospective buyers



170
A lead cistern

modern
68cm high by 102cm wide
by 69cm deep

£2,000-2,500



171
† A carved stone bowl on stand

modern
80cm high by 122cm wide

£1,200-1,800

Online bidding via SummersPlace Live - register through www.summersplaceauctions.com
No surcharge (*normal BP and VAT apply*)

172

**A pair of large carved
Vicenza stone finials on
plinths**

modern

230cm overall

£8,000-10,000



For details of our buyers premium which is added onto the hammer price together with any other applicable charges please refer to our guide for prospective buyers



173
A pair of Victorian
cast and wrought iron
lanterns
late 19th century
87cm high

£600-800

174
A collection of three
sandstone column bases
and an abstract by
Gerald Moore

sandstone column bases:
18th century
the tallest 74cm high
Abstract: Ciment fondu,
brick and granite tiles
213cm high (4)

Part of the Late Dr Gerald
Moore Collection of
Paintings and Sculpture

£200-300

175
A carved white marble
book

early 20th century
inscribed '*we shall walk
and talk in gardens all wet
with rain*'
35cm high by 61cm wide

£300-400

Online bidding via SummersPlace Live - register through www.summersplaceauctions.com
No surcharge (*normal BP and VAT apply*)



176
A brass armillary on
limestone base

modern
182cm overall

£1,800-2,500



177
A Portland stone
armillary sundial

circa 1900
with slate and bronze
armillary

160cm high

£1,500-2,500

For details of our buyers premium which is added onto the hammer price together with any other applicable charges please refer to our guide for prospective buyers



178
A carved Vincenzo stone
seat

late 20th century
182cm wide

£3,000-4,000

179
A rustic carved stone
bench

converted from an early
trough
46cm high by 102cm long

£400-600

Online bidding via SummersPlace Live - register through www.summersplaceauctions.com
No surcharge (*normal BP and VAT apply*)

180

A carved limestone bench

19th century

140cm long

£500-800



181

A similar bench

19th century

140cm long

£500-800



182

† A carved sandstone table

modern

with black slate top

88cm high by 156cm long

£2,000-3,000



For details of our buyers premium which is added onto the hammer price together with any other applicable charges please refer to our guide for prospective buyers



183

A white marble table

made up on 19th century
wrought iron trestles
136cm long by 61cm wide

£600-800

185

**† A carved sandstone
bench or low table**

Indian, modern
57cm high by 137cm long

£800-1,200

184

**A rare child's Regency
style wrought iron seat**

first half 20th century
57cm long

£400-600

Online bidding via SummersPlace Live - register through www.summersplaceauctions.com
No surcharge (*normal BP and VAT apply*)



186
An unusual stoneware
gothic style garden
stool by Thomason of
Cudworth

late 20th century stamped
Thomason Cudworth
40cm high
together with **two**
stoneware clam shells
by Phillip Thomason of
Cudworth

Provenance; Ex the Seago
collection. See footnote
to lot 12. See website for
further images

£250-400

187
A wrought iron and
mesh rocking chair

modern with wooden foot
and arm rests 172cm long

£500-800

For details of our buyers premium which is added onto the hammer price together with any other applicable charges please refer to our guide for prospective buyers



188
A similar wrought iron
rocking chair

£500-800

189
A Victorian cast iron
wooden slatted seat

last quarter of 19th
century
152cm long

£800-1,200

190
A Serpentine and Grape
pattern cast iron seat

late 19th century
with wooden slatted seat
130cm long

£300-500





193

191
A pair of massive oak
chairs

late 20th century
220cm high

£1,500-2,500

192
A wrought circular tree
seat

modern
in four sections
152cm diameter

£700-1,000

193
A circular topped table
incorporating 1930's
aircraft pistons

80cm high by 102cm
diameter

£200-400

194
A circular topped table
incorporating 1930's
aircraft pistons

80cm high by 102cm
diameter

£200-400



Online bidding via SummersPlace Live - register through www.summersplaceauctions.com
No surcharge (*normal BP and VAT apply*)



194



195

195
A wrought iron console table

French
1st half of the 20th
century
150cm high

£400-600



196

196
An unusual circular glass topped table

with ships wheel on
composition base
19th century and later
182cm

£2,000-3,000

For details of our buyers premium which is added onto the hammer price together with any other applicable charges please refer to our guide for prospective buyers



197
A brass and Istrian stone topped table

1960's
with makers stamp *B&M*
137cm by 56cm

£500-800



198
A brass and Istrian stone topped table

1960's
with makers stamp *B & M*
99cm square

£500-800

199

† A unique natural antler
glass mounted square table

37cm high by 100cm square

This and the following lot are unique handmade 'Deer' tables by The Gabbertas Studio, made from carefully selected Scottish antlers and they are the final prototypes which were originally designed and made for a European furniture brand in 2008. Occasionally these prototypes are made available by the studio for sale. They are the only examples of this design and will not be repeated. Made with great precision, the antlers are secured to the glass via a steel disk which is UV bonded to the glass surface. The antlers have either been lacquered or flocked to represent the natural antler felt. The design concept is based on the juxtaposition of the naturally irregular form of the antler with the regular geometry of their arrangement, which in turn suggests a natural landscape.

£2,500-4,000

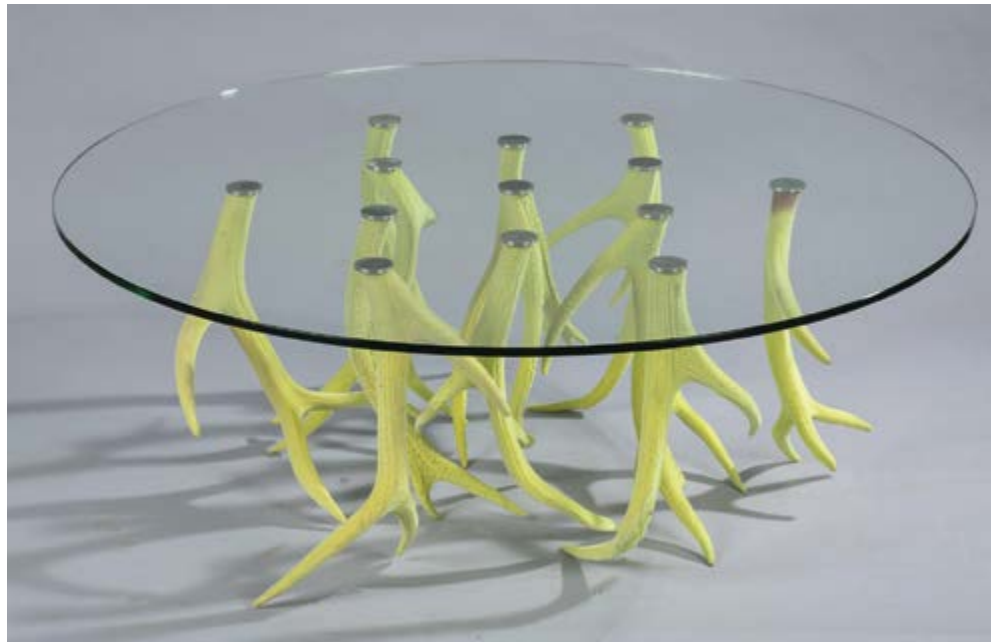


200

† A similar circular glass
mounted natural antler
table

37cm high by 100cm
diameter

£2,500-4,000



For details of our buyers premium which is added onto the hammer price together with any other applicable charges please refer to our guide for prospective buyers



201
A circular glass topped
dining table

on composition marble
stand

£1,000-1,500

202
A Lutyens style bench

modern
168cm long

Provenance; Ex the Seago
collection. See footnote
to lot 12

£200-400

203
A composition stone
pedestal

£500-800

Online bidding via SummersPlace Live - register through www.summersplaceauctions.com
No surcharge (*normal BP and VAT apply*)

204

**A French wrought iron
circular table**

1st half of the 20th
century
186cm diameter

£1,000-1,500



205

A rare teak seat

early 20th century
with ship breakers makers
plaque *H M S Endeavour*
183cm long

£500-800



For details of our buyers premium which is added onto the hammer price together with any other applicable charges please refer to our guide for prospective buyers



206
James Sherwood Westmacott: A carved white marble portrait bust of a gentleman

signed *James Sherwood Westmacott* and dated 1855

76cm high

James Sherwood Westmacott, 1823-1900, came from a family of renowned sculptors, studying with Sir Richard Westmacott (d.1856), his uncle, who himself studied under the great Richard Westmacott the Elder (d.1808). James Sherwood Westmacott exhibited at the Royal academy from 1846-1855 and the British Institution from 1852-



1867, and produced numerous monuments around Britain until his death.

£450-750

207
An impressive carved white marble bust of Napoleon

first half 20th century
on veined marble plinth
84cm high

£2,000-4,000



208
A carved white marble torso of a woman

20th century
on sandstone base
75cm high

£300-500

Online bidding via SummersPlace Live - register through www.summersplaceauctions.com
No surcharge (*normal BP and VAT apply*)



209
† An over-life-size carved stone torso

Indian, 2nd half 20th century
on associated base
120cm high

£300-500



210
A marble torso

A carved white marble torso
20th century
75cm by 45cm

£600-1,000



211
An unusual lead figure of a Triton

late 19th/early 20th century
33cm high
on associated Blashfield stoneware
pedestal
72cm high overall

Provenance: Ex the Seago collection.
See footnote to lot 12

£300-500

For details of our buyers premium which is added onto the hammer price together with any other applicable charges please refer to our guide for prospective buyers



212
A pair of carved white
marble Herm figures
representing Spring and
Winter

20th century
160cm high

£3,000-5,000



213
A carved marble figure of
the Venus de Milo

first half 20th century
on composition stone
fluted column pedestal
figure 120cm high, 177cm
high overall

£1,000-1,500



214
An unusual carved
Yorkstone bust of a girl
with flowers

North Country, mid 19th
century, 194cm high
together with a pair of
carved stone basins
Indian, 2nd half 20th
century 62cm highFrom
a Private Collection in
Ireland

£300-500

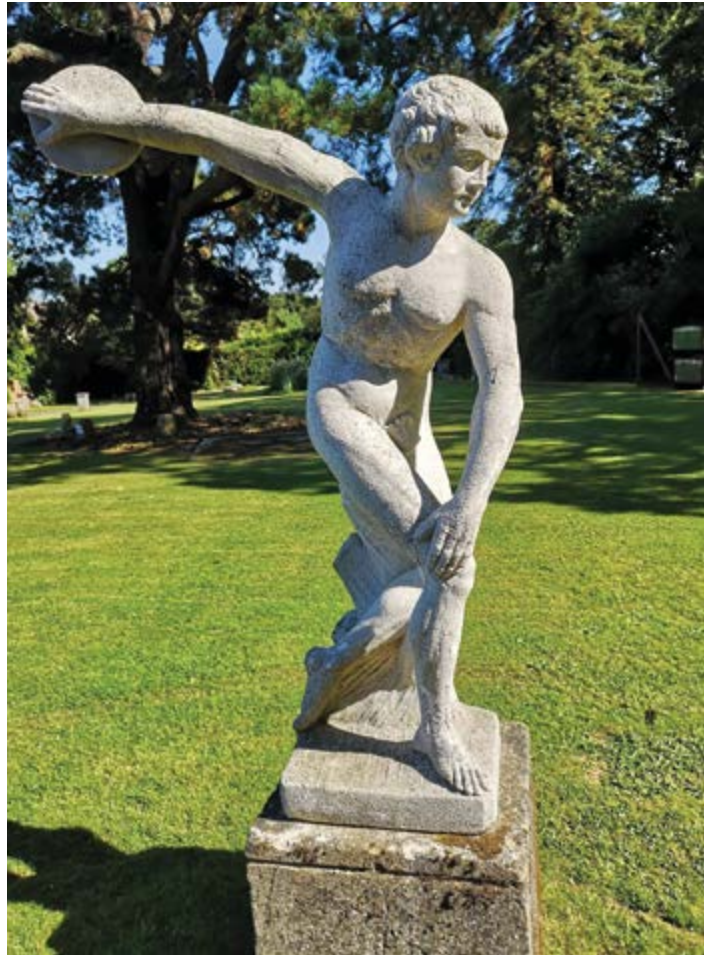
Online bidding via SummersPlace Live - register through www.summersplaceauctions.com
No surcharge (*normal BP and VAT apply*)



215
Two composition stone classical figures of Diana
and Plenty

2nd half 20th century
on pedestals
the larger 183cm high

£500-800



216
After the Antique: A composition stone
figure of the discus thrower

20th century
158cm high

£300-500

For details of our buyers premium which is added onto the hammer price together with any other applicable charges please refer to our guide for prospective buyers



217
A rare papier mâché stallion

French
late 19th century
on wooden base with
enamel makers plaque
inscribed *Cheval Granduer
Naturelle Ch. Sharpentier,
Paris*
147cm high

£1,500-2,500

218
An antique painted wood reclining figure

Siamese
late 19th/early 20th
century
44cm high by 156cm long

£1,200-1,500



Online bidding via SummersPlace Live - register through www.summersplaceauctions.com
No surcharge (*normal BP and VAT apply*)

219

**A pair of carved white marble
greyhounds in the style of Joseph
Gott**

modern
113cm by 36cm

£2,000-4,000



220

A set of five iron reindeer

modern
78cm high

£500-800



221

A carved marble reclining Buddha

19th century/early 20th century
100cm long

Provenance: Ex the Seago collection.
See footnote to lot 12

£200-400



For details of our buyers premium which is added onto the hammer price together with any other applicable charges please refer to our guide for prospective buyers



222
† A near pair of
sandstone mythological
lions

Indian, early 20th century
the larger 50cm high

£1,000-1,500

223
A composition stone
fawn

modern
92cm wide

£800-1,200

224
Rachel Ban

The Leaflings
a composition stone
woodland nymph
modern
73cm wide

£500-800

Online bidding via SummersPlace Live - register through www.summersplaceauctions.com
No surcharge (*normal BP and VAT apply*)



225
Gerald Moore

Totem figure with applied
cherubs
Painted fibreglass
170cm high
together with
**Agamemnon mask and
helmet**
Ciment fondu and cast
iron
170cm high (2)Part of
the Late Dr Gerald Moore
Collection of Paintings
and Sculpture

£60-100



226
**A composition stone
child 'Roman Soldier'**

on pedestal
second half 20th century
165cm high overall

£800-1,200

227
▲ Jonathan Sells

Embracing family
carved Purbeck stone
152cm high overall

£800-1,200



For details of our buyers premium which is added onto the hammer price together with any other applicable charges please refer to our guide for prospective buyers



228
† A set of three
composition stone putti

representing Spring,
Autumn and Winter
(one damaged)
84cm high

£300-500

230
A group of three bronze
cherub fountains

modern
average 78cm high

£800-1,200



229
A little bronze elephant

late 20th century
71cm high

£400-600

Online bidding via SummersPlace Live - register through www.summersplaceauctions.com
No surcharge (normal BP and VAT apply)



231
A composition stone
two tier fountain and
surround

late 20th century
208cm high by 300cm
diameter
Pool surround: Exterior
diameter 320cm, Interi-
or diameter 270cm
Fountain: 215cm high

£5,000-8,000

232
After the Antique:
A fragmentary white
marble figure of the
Apollo Belvedere

Italian mid 19th century
(*now in pieces*)
110cm high

Provenance; Ex the Seago
collection. See footnote
to lot 12

£300-500



233
A bronze swan on
composition stone
pedestal

second half of 20th
century
141cm high overall

£900-1,000



For details of our buyers premium which is added onto the hammer price together with any other applicable charges please refer to our guide for prospective buyers



234
An Oriental style
composition stone bridge

107cm long

height 46cm, overall
width 55cm, internal
width with tread is 38cm

£200-400

235
A suite of Chinese
style composition stone
furniture

table 107cm wide

£300-500

236
Two Oriental style
composition stone
curved benches

late 20th century
curved bench 116cm long,
straight bench 107cm long

£250-400

237
A pair of composition
stone dogs of Fo

on pedestals
late 20th century
84cm high

£500-800

Online bidding via SummersPlace Live - register through www.summersplaceauctions.com
No surcharge (*normal BP and VAT apply*)



238

† A large wrought iron kadai

Indian
20th century
on wrought iron stand
150cm diameter

£1,000-1,500

239

† A bronze urli Indian

Indian, 20th century
78cm diameter

£1,200-1,800



240

† An exceptionally large lingam stone

92cm high

£3,000-4,000

241

† Three lingam stones

average height 34cm
Shiva Lingum Stones are so called because in the Hindu religion they symbolise the union between heaven and earth. These natural stones were collected from the Narmada river and it is believed that a meteorite coloured the jasper on its impact with the earth.

£500-800



For details of our buyers premium which is added onto the hammer price together with any other applicable charges please refer to our guide for prospective buyers



242
Teak root sculpture with
three molten glass bowls

Wood and Glass
 Unique
 165cm high by 90cm wide
 by 60cm deep

£800-1,200

243
Teak root sculpture with
two molten glass bowls

Wood and Glass
 Unique
 200cm high by 84cm wide
 by 84cm deep

£500-800

Online bidding via SummersPlace Live - register through www.summersplaceauctions.com
 No surcharge (*normal BP and VAT apply*)



244
Nesbit Mukomberanwa

Tender Love
Springstone
Unique
60cm high by 56cm wide
by 16cm deep

£1,000-2,000



245
Sign Muzika

Path of True Love
Springstone
Unique
136cm high by 56cm wide
by 48cm deep

£2,000-4,000

For details of our buyers premium which is added onto the hammer price together with any other applicable charges please refer to our guide for prospective buyers



247



247
Tonderai Sowa

Infinity
Springstone, Signed

49cm high by 77cm
wide

£2,000-3,000

248
Innocent Nyashenga

Dancing Elephant
Cobalt Stone on Granite
Base

120cm high by 85cm
wide

£2,000-3,000



246
Anthony Ngando

Birdbath
White Dolomite and
Springstone

31cm high by 89cm wide
by 78cm deep

£2,000-3,000

Online bidding via SummersPlace Live - register through www.summersplaceauctions.com
No surcharge (*normal BP and VAT apply*)



249
▲ Gill Parker

Heron
Bronze
Signed
Edition 1 of 7
79cm high by 115cm
wide by 36cm deep

£10,000-15,000



250
Brendan Hesmondhalgh

Pelican
Signed
Stoneware on steel stand
total 208cms high by
105cms long by 48cms
deep

£4,000-6,000

251
Crocodile

Last quarter 20th century
Bronze
Mid green-brown
variegated patination
178cm long

£2,000-3,000



For details of our buyers premium which is added onto the hammer price together with any other applicable charges please refer to our guide for prospective buyers



252

Richard Trupp

Juggernaut of Nought

Waxed Steel

Edition 5 of 12

236cm high by 150cm wide by 75cm deep

£20,000-30,000

Online bidding via SummersPlace Live - register through www.summersplaceauctions.com

No surcharge (*normal BP and VAT apply*)



253
Richard Cresswell

Toroidal
Stainless Steel
230cm high
Head 130cm diameter

£4,000-6,000



254
Brendon Murless

Serenity
Patinated copper resin
Signed
Edition of 30
104cm high by 70cm wide by 70cm deep

£3,000-5,000

For details of our buyers premium which is added onto the hammer price together with any other applicable charges please refer to our guide for prospective buyers



255
Liam O'Neill

The Offering
Carved Redwood
Signed
Unique
205cm high by 36cm wide by
29cm deep

£2,000-3,000



256
John Spielman (Born 1944)

Space 4
Wood
Signed
Unique
43cm high by 30cm wide by 19cm
deep

£800-1,200



257
▲John Skelton (1923-1999)

Carved Torso
Signed and dated 1979
carved trunk on marble base
76cm high by 41cm wide by 23cm
deep

£1,000-1,500

Online bidding via SummersPlace Live - register through www.summersplaceauctions.com
No surcharge (*normal BP and VAT apply*)



258

La Marrina

Glass Lamp

Signed

Unique

63cm high by 53cm wide
by 25cm deep

£1,200-1,800



259

▲ Philip Hearsey

Blue Bowl

Bronze

12cm high by 25cm wide
by 30cm deep

£600-800



260

KB Sturgess

A pair of white composite
Doves on marble bases

Signed

Each 28cm high by 20cm
wide by 13cm deep

£400-600

For details of our buyers premium which is added onto the hammer price together with any other applicable charges please refer to our guide for prospective buyers



261
Lewie

Running Hare
Bronze
Signed
Edition of 1 of 9
133cm high by 145cm wide by 39cm deep

£20,000-30,000

Online bidding via SummersPlace Live - register through www.summersplaceauctions.com
No surcharge (*normal BP and VAT apply*)

262

▲ Enzo Plazzotta (1912-1981)

Lady with a smile

Bronze with black patina

From an edition of 9 of which only 2
were cast

Signed with makers mark and foundry
stamp

166cm high, 45cm wide

£20,000-30,000



For details of our buyers premium which is added onto the hammer price together with any other applicable charges please refer to our guide for prospective buyers



263
Jonathan Clarke

Bust of Odysseus
Aluminum
Signed
Unique
156cm high by 53cm wide
by 53cm deep

£8,000-12,000

Online bidding via SummersPlace Live - register through www.summersplaceauctions.com
No surcharge (*normal BP and VAT apply*)



264
Linda Frances

Landing Hare
Bronze
Signed
52cm high by 80cm wide
by 30cm deep

£1,800-2,500

265
A pair of Storks

Metal
Each 71cm high by 28cm
wide by 34cm deep

£400-600



266
John Cox

Leaping Frog
Bronze with Foundry
Stamp
73cms long by 55cms high

£600-800



For details of our buyers premium which is added onto the hammer price together with any other applicable charges please refer to our guide for prospective buyers



267



268

267

▲Helen Sinclair

Rising for the Moon

Resin

with monogram and numbered

XI of XV

180cm high

£500-800

268

▲Helen Sinclair

Still sitting

Resin

with monogram and numbers

VIII of XV 190cm high

This lot comes with a certificate of authenticity from Helen Sinclair dated 2003.

£500-800

269

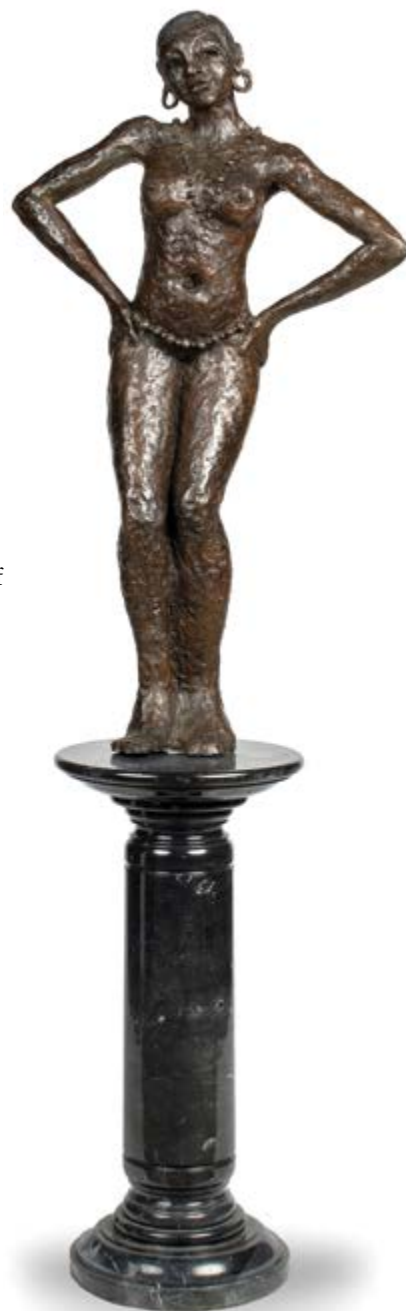
▲ Margaret Higginson

Josephine Baker

bronze on marble plinth

200cm overall

£3,000-5,000



Online bidding via SummersPlace Live - register through www.summersplaceauctions.com
No surcharge (*normal BP and VAT apply*)

270

Gerry Downes

Leda and the Swan

Bronze and Phenolic

Unique

500cm high by 260cm

wide

£40,000-60,000



For details of our buyers premium which is added onto the hammer price together with any other applicable charges please refer to our guide for prospective buyers



271
Jonathan Loxley (Born 1960)
 Destiny
 Honey Onyx on Anodised
 Aluminium Base
 Unique
 147cms high by 91cms
 wide by 26cms deep on
 base of 55cms high

273
John Cox
 Taurus
 Polished Bronze
 Signed
 64cm high by 71cm wide
 by 36cm deep
 £3,000-5,000

£20,000-30,000



272
Ruth Moilliet
 Wildflowers
 Coated steel, glass, pressed
 flowers
 Unique
 31cm high by 46cm wide
 by 11cm deep

£2,000-3,000

Online bidding via SummersPlace Live - register through www.summersplaceauctions.com
 No surcharge (*normal BP and VAT apply*)



274

An impressive and monumental bronzed fibreglass group of four horses rising out of the waves

late 20th century
fixed on an iron frame
220cm high by 550cm
wide by 290cm deep
overall

Provenance: Bought from Shepperton Studios and featured in a Spice Girls video, they were relocated to the roof of Caesar's nightclub, in London where they stood for about 20 years.

£8,000-12,000

274A

▲Ian Nutting, born 1960

Red deer
Scrap metal
Unique
165cm high by 160cm
long

£2,000-3,000



For details of our buyers premium which is added onto the hammer price together with any other applicable charges please refer to our guide for prospective buyers



275
Ann Vrielinck

Awake
Bronze
Signed
Numbered 10 from an
Edition of 49
224cm high by 110cm
wide by 58cm deep

£10,000-14,000

276
Jenny Pickford

Set of 5 Wildflowers
Forged Steel and Hand
Blown Glass
Unique
Approx 150cm high by
30cm wide by 30cm deep

£1,200-1,800

Online bidding via SummersPlace Live - register through www.summersplaceauctions.com
No surcharge (*normal BP and VAT apply*)



277
Anon

Holy Moley
Copper
Unique
158cm high by 160cm
wide by 59cm deep

£3,000-5,000

278
Victor Matafi

Eye on the Prize
Opal Stone
Signed
Unique
160cm high by 70cm wide
by 53cm deep

£3,000-5,000



For details of our buyers premium which is added onto the hammer price together with any other applicable charges please refer to our guide for prospective buyers



279
Richard Cresswell
 Parasol
 Steel and stainless steel
 200cm high by 130cm
 wide by 130cm deep

£1,500-2,500

280
Guido Deleu
 Lifesize Visitor
 Bronze
 Signed
 150cm high

£8,000-10,000

Online bidding via SummersPlace Live - register through www.summersplaceauctions.com
 No surcharge (*normal BP and VAT apply*)



281
Winston Nyekete

Zimbabwean
Protecting Her Own
leopard and cub in leopard
stone

Bought from the garden
at Frensham Ponds, for
£3,850. It has a large
single section of Cedar
trunk as a plinth. Itself
55cm high by 65cm wide
45cm deep.

£1,500-2,500

282
**Dino Rosin (Born 1948,
Italy)**

Large Studio Rosin glass
pyramid sculpture, clear
and calcedonia glass
Worked free-hand
Signed with glass seal and
signature
44cm high by 23cm wide
by 23cm deep

£2,000-3,000

283
John Cox
Laying Hare
Bronze
Foundry Stamped
36cm high by 75cm wide

£800-1,200

For details of our buyers premium which is added onto the hammer price together with any other applicable charges please refer to our guide for prospective buyers





284
Guy Buseyne

All for one
Bronze on Corten Steel
base
Signed and Numbered
from Edition of 75
78cm high by 36cm wide,
base 100cm high

£3,000-5,000

285
A pair of large planters
Bronze
Each 65cm high by 85cm
wide by 85cm deep

£2,000-3,000



286
Guido Deleu

The Visitor
Red Rubia Ceramic
Open
75cm high by 28cm wide
by 21cm deep

£700-900

287
Guido Deleu
The Visitor
White Ceramic
Open
75cm high by 28cm wide
by 21cm deep

£700-900

Online bidding via SummersPlace Live - register through www.summersplaceauctions.com
No surcharge (*normal BP and VAT apply*)



288
Carved Hardwood III

Teak/Asian Oak
Unique
235cm high by 75cm wide
by 70cm deep

£1,200-1,800



289
Carved Hardwood II

Teak/Asian Oak
Unique
200cm high by 55cm wide
by 36cm deep

£1,200-1,800



290
Carved Hardwood I

Teak/Asian Oak
Unique
219cm high by 44cm wide
by 37cm deep

£1,200-1,800



291
A bronze boy on a snail fountain

A bronze boy on a snail fountain
modern
73cm high

£800-1,200

For details of our buyers premium which is added onto the hammer price together with any other applicable charges please refer to our guide for prospective buyers



292

▲ Tom Greenshields (1915-1994)

A bronze, resin and composition stone bird bath
modern
103cm high

£2,500-4,000



293

A Pietra Dura table top

late 19th early 20thc
century
120cm high by 69cm wide

£800-1,200



294

A Pietra Dura table top

20th century
on a black ground
120cm high by 74cm wide

£800-1,200

Online bidding via SummersPlace Live - register through www.summersplaceauctions.com
No surcharge (*normal BP and VAT apply*)

295

▲ A unique blacksmith made upholstered suite of table, thrones and chairs, in wrought iron enhanced with natural minerals by Shelley Thomas

table: 193cm by 82cm wide

A graduate of the Sir John Cass School of Art, Shelley Thomas designs and makes jewellery and flamboyant furniture from her studio at the London Museum of Water & Steam in Brentford. This suite was commissioned and made in 2003. Applied with script in Latin, French and English, the different elements have been enhanced with amethyst, iron pyrites, and quartz crystals.

See website for further images

£35,000-45,000



For details of our buyers premium which is added onto the hammer price together with any other applicable charges please refer to our guide for prospective buyers



296
An Apatite bowl
 Madagascar
 30cm by 26cm by 9cm
 £250-350

297
A Moss agate bowl
 India
 35cm by 25cm by 10cm
 £500-600

298
An Agate dish
 Brazil
 27cm by 19.5cm
 £150-250

299
An Agate bowl
 22cm by 19cm
 £100-150

300
An Agate bowl
 17cm by 11cm
 £100-150

301
An Agate bowl
 17cm by 15cm
 £50-100

Online bidding via SummersPlace Live - register through www.summersplaceauctions.com
 No surcharge (*normal BP and VAT apply*)



302
A massive rose quartz
bowl

73cm by 44cm, 66.5kg

£1,800-2,000



303
‡ A Zebra onyx bowl

Mexico
70cm by 67cm by 24cm

£1,500-2,500

For details of our buyers premium which is added onto the hammer price together with any other applicable charges please refer to our guide for prospective buyers

304

‡ A Flourite bowl

Mexico

48cm by 31cm by 21cm

£1,000-1,500



305

Three blue Agate spheres

13cm, 10cm and 10cm

£400-600



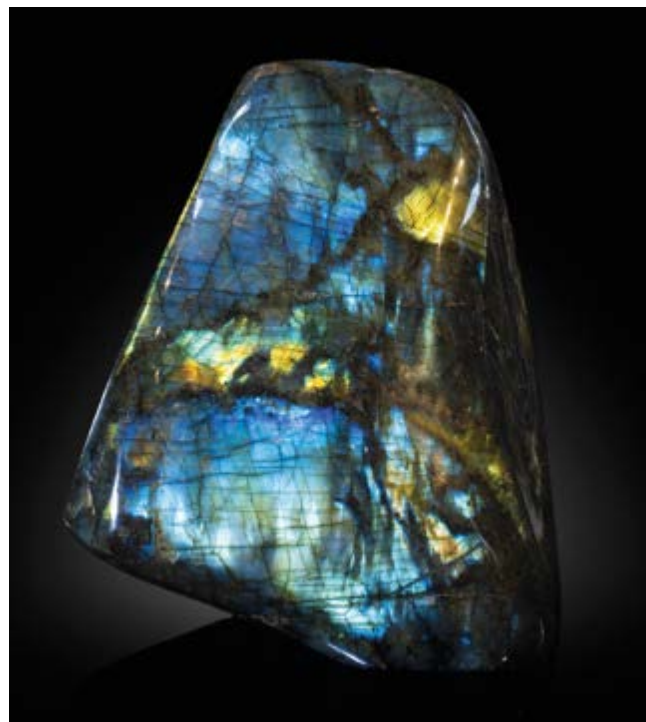
Online bidding via SummersPlace Live - register through www.summersplaceauctions.com
No surcharge (*normal BP and VAT apply*)



306
A large Labradorite specimen

50cm high by 30cm wide,
37.1kg

£1,000-2,000



307
A Labradorite freeform

Madagascar
24cm high, 20cm wide
7.7kg

£400-600



308
A quartz clear freeform

Madagascar
14cm wide

£100-150

For details of our buyers premium which is added onto the hammer price together with any other applicable charges please refer to our guide for prospective buyers



309
A large polychrome
Jasper sphere

22cm diameter, 14.8kg

£200-400

311
A large Lapis Lazuli
sphere

24cm diameter, 23.2kg

£2,000-3,000

310
A Rose Quartz sphere

Brazil
15cm diameter, 4.8kg

£250-400

Online bidding via SummersPlace Live - register through www.summersplaceauctions.com
No surcharge (*normal BP and VAT apply*)

312

‡ A large Gogotte

44cm by 41cm by 14cm

£3,000-5,000



For details of our buyers premium which is added onto the hammer price together with any other applicable charges please refer to our guide for prospective buyers



313



316



314



315

313

A large clear quartz formation

with fine needlepoint crystals
50cm by 43cm by 18cm

£700-900

316

A clear quartz formation

with large individual crystals
40cm by 40cm by 30cm

£600-800

314

A clear quartz formation

with fine needlepoint crystals
47cm by 25cm by 20cm

£600-800

315

A large Aragonite specimen

Morocco
92cm wide

£500-800

Online bidding via SummersPlace Live - register through www.summersplaceauctions.com
No surcharge (*normal BP and VAT apply*)



317

317
An Aragonite specimen

Morocco
60cm

£500-800



318

318
**Two Aragonite and
calcite formations on
stands**

Morocco
24cm high and 27cm high

£150-250

319
**A quartz geode in two
halves**

together 55cm by 54cm

£1,000-1,500



For details of our buyers premium which is added onto the hammer price together with any other applicable charges please refer to our guide for prospective buyers



320
A large Mangano Calcite
bowl

modern
31cm diameter

£700-900

321
A large Desert Rose
formation
33cm by 56cm by 22cm

£150-250

322
A rose quartz and pink
calcite freeform

56cm high by 31cm wide,
37.5kg

£1,000-1,500

Online bidding via SummersPlace Live - register through www.summersplaceauctions.com
No surcharge (*normal BP and VAT apply*)



323
A green Fuchsite
freeform

41cm by 29cm

£50-100



325
A Malachite freeform

Zaire
30cm by 25cm by 12cm

£750-850



324
A blue Sodalite freeform

35cm high

£200-300

326
A large Serpentine
freeform

35cm by 26cm by 24cm

£400-600



For details of our buyers premium which is added onto the hammer price together with any other applicable charges please refer to our guide for prospective buyers



327
An Amethyst tree

modern
36cm high

£750-850

328
An Amethyst on metal stand

10cm by 12cm by 24cm
(dimensions include stand)

£250-350

329

An Amethyst table top

43cm by 37cm by 40 cm
(measurements without
the glass)

£600-800

330

**A Vera Cruz amethyst in
display case**

31cm by 23cm by 15cm

£500-700

331

An amethyst freeform

53cm high

£900-1200

332

An amethyst freeform

59cm high

£1000-1500

333

An amethyst bed

Brazil

43cm by 42cm

£200-300



331



332



For details of our buyers premium which is added onto the hammer price together with any other applicable charges please refer to our guide for prospective buyers



334
A large agate slice on
metal stand

47cm high

£400-600

335
A pair of agate slices

mounted as wings
37cm high

£450-650



336
A pair of small agate
slices

mounted as wings
28cm high

£350-500





337
A large apophyllite
freeform

Indian
49cm

£500-800

338
A Quartz Crystal bowl

23cm by 19cm by 5cm

£350-450



339
A pair of lapis lazuli
veneered circular side
tables

on brass supports
modern
50cm diameter by 59cm
high

£900-1200



For details of our buyers premium which is added onto the hammer price together with any other applicable charges please refer to our guide for prospective buyers



340
**A malachite veneered
box**

9cm high by 17cm wide
by 11cm deep

£400-600

342
Pyrite and Quartz crystals

Bulgarian
35cm by 27cm by 18cm

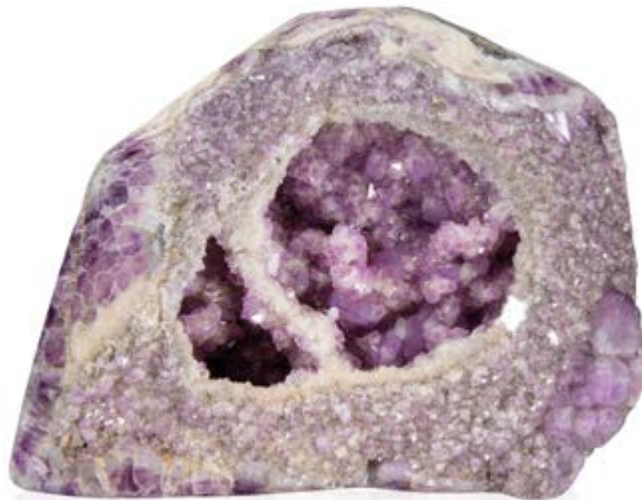
£700-900



341
**A set of three malachite
and brass bowls**

20cm diameter together
with a similar larger bowl,
37cm

£500-800



343
An unusual Druzy
Amethyst hollow

Brazil
50cm by 44cm by 15cm

£1,200-1,600



344
A Feldspar bowl

Madagascar
35cm by 28cm by 14cm

£400-600



345
A Chalcedony/Druzy
quartz hollow freeform

Brazil
26cm by 25cm by 17cm

£350-450

For details of our buyers premium which is added onto the hammer price together with any other applicable charges please refer to our guide for prospective buyers



346
A turned lapis lazuli
shallow bowl

31cm diameter
£450-650



348
A large blue agate
freeform

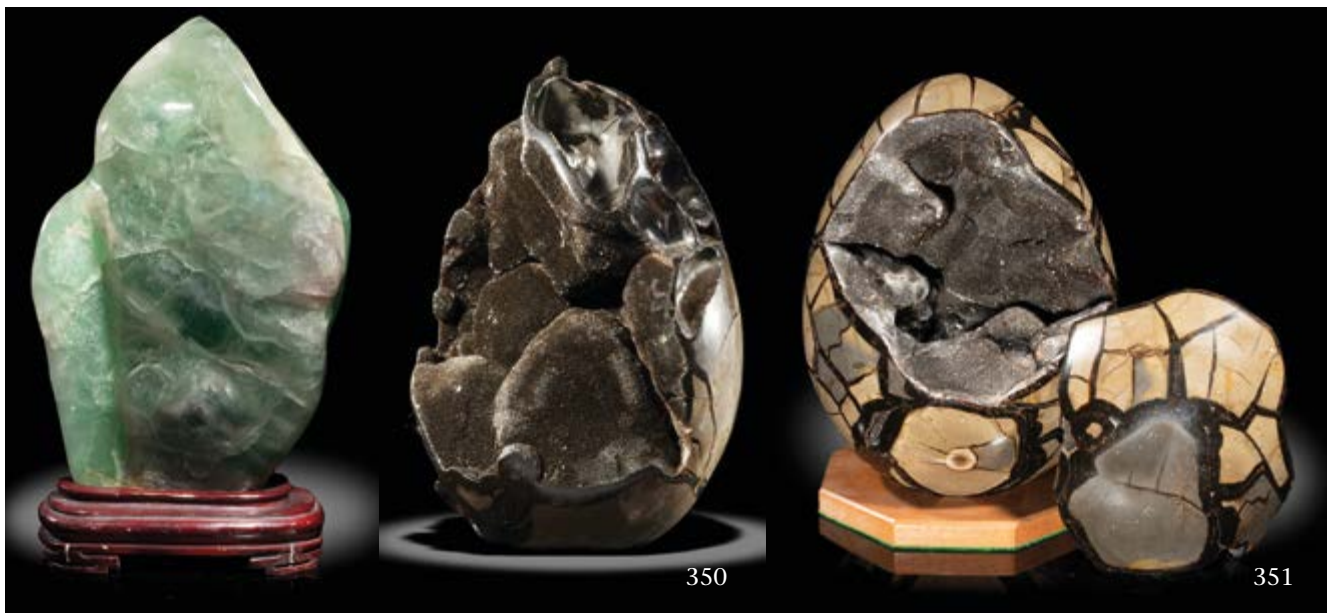
Madagascar
52cm high by 38cm wide
£800-1,200



347
Two Agate slices

Brazil
49cm high
£200-300

Online bidding via SummersPlace Live - register through www.summersplaceauctions.com
No surcharge (*normal BP and VAT apply*)



349

A green Fluorite

freeform on wooden stand

China

58cm by 30cm by 12cm

£250-400

351

A large Septarian egg on stand

with removeable front

25cm high

£300-500

350

A black septarian geode egg shaped

Madagascar

23cm high

£300-500

352

An unusual Mica and Aquamarine formation

14cm by 11cm

£100-150



For details of our buyers premium which is added onto the hammer price together with any other applicable charges please refer to our guide for prospective buyers



353
A Red Jasper freeform

South Africa
31cm

£400-600



355
A Seymchen Meteorite
slice

found in 1967 Siberia
18cm by 15cm

£500-800



354
A Stromatolite section
(Fossil algae)

Bolivia, Cretaceous period
100mya
21cm by 7cm by 20cm

£400-600

Online bidding via SummersPlace Live - register through www.summersplaceauctions.com
No surcharge (*normal BP and VAT apply*)



356
A Rose Quartz sphere

13cm diameter, 3.25kg

£250-400



357
A Lapis Lazuli sphere

11.5cm diameter, 2.7kg

£250-400



358
An open Quartz sphere

Brazil
10cm diameter

£200-400

For details of our buyers premium which is added onto the hammer price together with any other applicable charges please refer to our guide for prospective buyers



359



361



360



361

359

A Dog tooth spar Calcite

volcanic ash

Java

54cm by 29cm by 15cm

Missouri

36cm by 28cm by 13cm

£500-700

£400-600

360

**Tufa comprised of
banana plant branches
and twigs**

361

Two stilbite freeforms

the larger 31cm

solidified and covered by

£600-1,000

Online bidding via SummersPlace Live - register through www.summersplaceauctions.com
No surcharge (*normal BP and VAT apply*)



362
**A set of six lapis egg cups
/shot glasses**

modern
each 6.5cm high

£500-800

363
**A set of four lapis egg
cups/shot glasses**

modern
each 6.5cm high

£300-500

364
**A Mangano Calcite
sphere**

modern
17cm diameter, 8.2kg

£400-600

365
A Mangano Calcite egg

modern 26cm
high, 8.5kg

£400-600



For details of our buyers premium which is added onto the hammer price together with any other applicable charges please refer to our guide for prospective buyers



366
**A large Quartz and
Haematoid geode**

45cm high by 48cm wide

£1,000-1,500

367
An indented Jasper dish

Madagascar
40cm by 29cm

£250-350

368
**Four banded Agate
polished pebbles**

together with a Fish Eye
Jasper and a boulder Opal
pebble

Boulder Opal 16cm by
5cm by 5cm

Fish Eye Jasper 5m by 5cm
by 3cm

the largest agate 11cm by
7cm by 3cm

£200-300

Online bidding via SummersPlace Live - register through www.summersplaceauctions.com
No surcharge (*normal BP and VAT apply*)



369
A pink quartz prism
Madagascar
43cm

£100-150

370
A polychrome jasper
freeform
Madagascar
17cm high

£100-150

371
An agate freeform
Madagascar
13cm high

£100-150

372
A crystalised septarian
geode
Madagascar
13cm high

£50-80

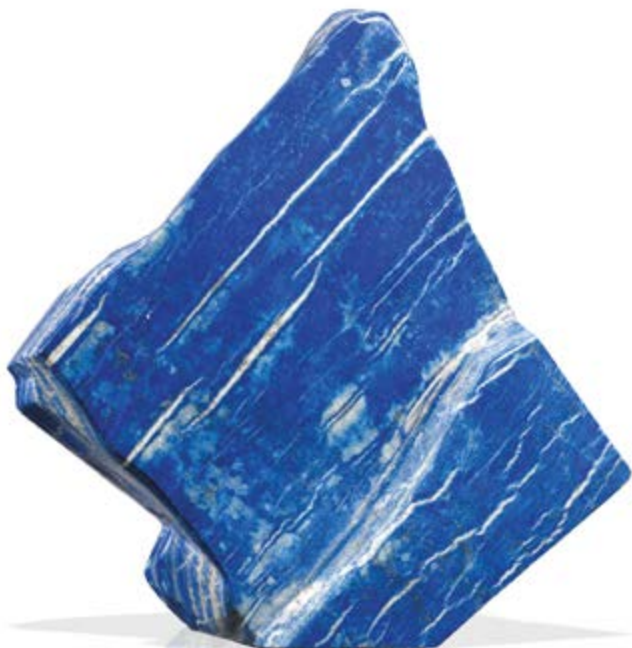
373
A specimen of quartzite
with relief carved
mermaid

51cm high

£250-400



For details of our buyers premium which is added onto the hammer price together with any other applicable charges please refer to our guide for prospective buyers



374
A large Lapis Lazuli
freeform

62cm high by 62cm wide,
47.3kg

£4,800-5,200



376
A septarian nodule

30cm high, 20kg

£500-800



375
A rare Lazurite in Lapis
Lazuli specimen

Afghanistan
9cm high

£150-250

Online bidding via SummersPlace Live - register through www.summersplaceauctions.com
No surcharge (*normal BP and VAT apply*)



377
A Jasper freeform

Madagascar
20cm high

£150-250



378

378
Two Fossilised wood specimens

Indonesia
the larger 40cm high

£100-200

379
Two Fossilised wood sections

carved to resemble
bamboo
the larger 53cm tall

£100-200

380
A fossil wood section
Madagascar

Triassic
on metal stand
28.5cm high by 19cm
wide

£150-250



379



For details of our buyers premium which is added onto the hammer price together with any other applicable charges please refer to our guide for prospective buyers



381



382



383

381
A fossilised tree trunk

Indonesia Pliocene
78cm high

£400-600

382
A very large fossilised tree trunk

Madagascar Triassic
Pliocene
84cm high

£800-1,200

383
An unusual fossil tree trunk with bark

Madagascar Triassic
50cm tall

£100-200



Araucaria trees are a living fossil having lived in south America for over 100 million years. The best known of the species today is the Monkey Puzzle tree (Araucaria Araucana). The following fossil cones and branch belong to Araucaria mirabilis spp. And all come from the Cerro Cuadrado petrified forest in Patagonia which was formed by a massive volcanic eruption 160 million years ago burying the trees under ash. This selection comes from a collection made before the export of fossils from Argentina came into effect early this Century and therefore provides a rare opportunity to acquire these remarkable fossils.

384
An Araucaria fossil branch

Argentina
12cm long

£300-500



386
An Araucaria fossil branch

Argentina
11cm long

£300-500



388
An Araucaria Pine Cone

Argentina
6cm

£150-250



385
An Araucaria fossil branch with two cones

Argentina
16cm long

£600-1,000



387
An Araucaria fossil branch

Argentina
13cm long

£300-500

For details of our buyers premium which is added onto the hammer price together with any other applicable charges please refer to our guide for prospective buyers



389
An Araucaria Pine Cone

Argentina
6cm

£150-250

391
An Araucaria fossil branch

Argentina
13cm long

£300-500

390
An Araucaria fossil branch

Argentina
10cm long

£200-300

Online bidding via SummersPlace Live - register through www.summersplaceauctions.com
No surcharge (*normal BP and VAT apply*)



392
**An Orthoceras and
Goniatite plaque**

Morocco, Devonian
132cm by 91cm

£300-500



393
A large Orthoceras slab

Morocco, Devonian
96cm by 48cm

£250-400



394
An Orthoceras sculpture

Morocco, Devonian
145cm

£300-500

For details of our buyers premium which is added onto the hammer price together with any other applicable charges please refer to our guide for prospective buyers



395



397

395
**A Schlaifhausen
ammonite commune**

Lower Jurassic
39cm by 22cm

£200-300

396
**A pair of framed
Cleoniceras**

Madagascar, Cretaceous
28cm by 40cm

£200-300

397
**A Schlaifhausen
ammonite commune**

Lower Jurassic
on stand
26cm by 43cm

£250-400



396

Online bidding via SummersPlace Live - register through www.summersplaceauctions.com
No surcharge (*normal BP and VAT apply*)



398
**A Paracoronicerus Lyra
Ammonite**

Lyme Regis, Jurassic
approx. 195 million years
old
with two stands
50cm by 42cm by 10cm

£500-800



399
A large Ammonite

Madagascar
48cm

£1,000-1,500

400
**A Lytoceras Ammonite
polished half**

Madagascar, Cretaceous
43cm

£500-800



For details of our buyers premium which is added onto the hammer price together with any other applicable charges please refer to our guide for prospective buyers



401
A pair of framed
Cleoniceras

Madagascar, Cretaceous
28cm by 40cm

£200-300

402
A Paradoxides Trilobite

Morocco, Devonian
framed
57cm by 50cm

£200-300

403
A set of three frames of
fossilised sharks' teeth

Morocco
various species and ages
53cm by 26cm

£200-300



**404
A multi Fish plaque**

Green River formation,
Wyoming, Eocene
71cm by 55cm by 4cm

The fossils that come from the Green River Formation are approximately 60 million years old and come from the era known as the Eocene. They are celebrated for the outstanding detail they show. Many species of perfectly preserved fish are included in the fauna, but on very rare occasions bird fossils are found, sometimes even showing feathers. The Green River Formation is named after the Green River, a tributary of the Colorado River in the south west of the United States.

£400-600



**405
Two framed Megalodon teeth**

USA, Miocene
39cm by 29cm

£500-700

**406
A very large Megalodon tooth**

Indonesian Miocene
14.6cm on the diagonal
on stand

£400-600



For details of our buyers premium which is added onto the hammer price together with any other applicable charges please refer to our guide for prospective buyers



407
An agatised fossil wood

Arizona
36cm wide

£400-600

409
A Pecten Plaque

Marseille, Miocene
56cm by 56cm by 12cm

£600-800

408
A pair of fossil wood sections on wooden stands Madagascar

Triassic
on metal stand
31cm high by 33cm wide
and 30.5cm high by 33cm wide

£200-300

Online bidding via SummersPlace Live - register through www.summersplaceauctions.com
No surcharge (*normal BP and VAT apply*)

410

Two sandstone freeforms

the larger 14cm high by
26cm wide

£50-80



411

A Paradoxides Trilobite

Morocco, Devonian
unframed
44cm by 35cm

£150-250



412

**Dryosaurus
phosphaticus crocodile
skull**

Morocco, Cretaceous
67cm long

£1,000-1,500



413

**A large Goniatite fossil
marble bowl**

Morocco, Devonian
56cm by 42cm

£100-150



For details of our buyers premium which is added onto the hammer price together with any other applicable charges please refer to our guide for prospective buyers



414

‡ An Edmontosaurs and Triceratops fossil bone assemblage

Lance Formation, USA, Wyoming, late Cretaceous

£8,000-12,000



415

‡ An Edmontosaurs and Triceratops fossil bone assemblage

Lance Formation, USA, Wyoming, late Cretaceous

This includes a rib of a Edmontosaurus and a vertebra of a Triceratops

£3,000-5,000

Online bidding via SummersPlace Live - register through www.summersplaceauctions.com
No surcharge (*normal BP and VAT apply*)



416

A very rare Cave Lion (*panthera spelaea*) skull

Siberia (Russia), Pleistocene radio carbon dated to 48,000 years ago
lacking lower jaw
30cm long by 20cm wide; teeth 4.2 cm (canines)

The extinct Cave Lion (*Panthera spelaea*) inhabited Europe until around 10,000 years ago. It is very distinct from the modern day lion and differences in the skull formation are marked, although undoubtedly the two species are related. The species is scientifically well known, but its fossils are surprisingly uncommon. Some of these fossils have certainly been found in caves but perhaps the comparative rarity of the remains indicates that this was not their regular habitat. Complete skulls are surprisingly rare.

£15,000-25,000

For details of our buyers premium which is added onto the hammer price together with any other applicable charges please refer to our guide for prospective buyers



417

‡ **An ammonite matrix**

Canada, late Cretaceous
84cm long

The Bear Paw geographical formation of Alberta, Canada is famous for a substance called ammolite, a most attractive mineral that is often used in jewellery and for other decorative purposes. Ammolite is actually the crushed up remains of a fossil ammonite known scientifically as *Placentieras meeki*. Sometimes, however, whole ammonites are found and these are far too rare and wonderful to be broken up into fragments. they are

fantastically coloured in shades of iridescent reds and greens and have to be seen to be believed. Because of their great beauty, rarity and exquisite appearance they are highly sought after and the example offered here is a particularly large one. Due to their intrinsic value their export from Canada is now subject to serious restrictions and only those that were exported legally can be offered for sale. The ammonites lived over 70 million years ago during the late Cretaceous period and the extraordinary colours were formed due to the intense pressure and heat to which the fossils have been subjected over the course of their existence.

£25,000-30,000

Online bidding via SummersPlace Live - register through www.summersplaceauctions.com
No surcharge (*normal BP and VAT apply*)



**418
A Woolly Mammoth
tooth**

mounted on stand
Ice Age, North Sea
25cm high overall

£300-500

**419
An Erbenochile Erbeni
Trilobite**

in case
Morocco, Devonian
12cm by 16cm

£400-600



**420
An ammonite block**

Escragnolles, France,
Albian stage, Cretaceous
Species: Oxytropidoceras
acutocarinatum, Hoplitites
dentatus, Hoplitites
benetiatus, Hoplitites rudis,
Beudanticeras beudanti,
Phylloceras, Brachiopodes,
assorted gastropods,
lamellibranchia
on metal stand
36cm high by 29cm wide
by 1.5cm deep

£800-1,200

**421
An unusually small
Megalodon tooth**

Indonesia, Miocene
7.2cm on the diagonal on
stand

£150-250



For details of our buyers premium which is added onto the hammer price together with any other applicable charges please refer to our guide for prospective buyers



422
**Malloch of Perth: A
Golden Eagle**

late 19th century
75cm high by 81cm wide

£600-1,000

424
**A Hen Grouse by
Rowland Ward in glass**

case early 20th century
51cm by 49cm by 32cm

£100-200

423
**An unusually coloured
crow**

early 20th century
56cm by 38cm by 24cm

£100-200



425
**A Stoat by Pratt and Sons
of Brighton**

early 20th century label
to rear
28cm high by 32cm wide

£100-150



427
**Cooper: A Griggs bow
fronted Chubb**

dated 1927 with Cooper
label
34cm high by 64cm wide

£400-600

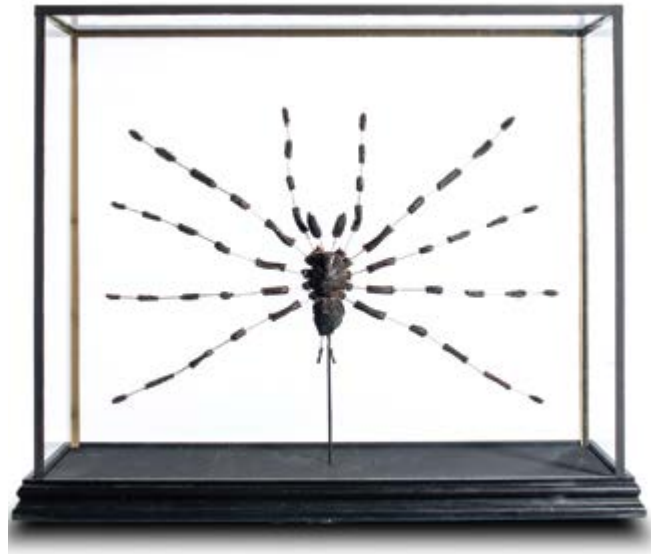
426
**A full mount badger in
wall case**

late 19th century
63cm by 48cm by 20cm

£250-400



For details of our buyers premium which is added onto the hammer price together with any other applicable charges please refer to our guide for prospective buyers



428
**Williams of Dublin: A
 Greenfinch case**
 32cm high by 40cm wide
 £100-200

430
**A Tarantula in display
 case**
 28cm high by 35cm wide
 £50-80

429
**A wall display of moths
 including a Deaths Head
 Hawks Moth**
 59cm by 59cm
 £500-800

Online bidding via SummersPlace Live - register through www.summersplaceauctions.com
 No surcharge (*normal BP and VAT apply*)



431
Four Beetles in display cases

comprising of two Fighting Beetles, 29cm by 21cm by 10cm and two Harlequin Beetles, 29cm by 27cm by 10cm and 26cm by 26cm by 10cm

£100-150



432
A full mount crocodile

late 19th century
141cm long (damages)

£200-300

433
A set of three mounted starfish

on metal bases

£300-500



434
A black bear skull

First half of the 20th century
24cm long by 11cm high

£100-200



For details of our buyers premium which is added onto the hammer price together with any other applicable charges please refer to our guide for prospective buyers



The following 5 lots come from the collection of Lieutenant-Colonel Walter Hall (1891-1980) – soldier, Member of Parliament and a fanatical hunter of big game. After his death the specimens featured became the property of the celebrated gun company Holland and Holland and were kept at their country shooting centre near Ruislip.

435
A Roe Deer trophy on shield

"Primus in Hibernia, 1878"
69cm high

£300-500



436
Rowland Ward: A Chamois trophy on shield

with details, *Algau Alps Hinetstein*
early 20th century
73cm high

£500-800



437
Rowland Ward: A White Eared Kob head

20th century
56cm high

£300-500



438
Rowland Ward: A Nile Letchwe head

81cm high by 53cm deep

£400-600

Online bidding via SummersPlace Live - register through www.summersplaceauctions.com
No surcharge (*normal BP and VAT apply*)



439
**Rowland Ward: A white
Rhinoceros head**

early 20th century
110cm high by 137cm
deep

This Rhino head is also of considerable significance. The vast majority of antique rhino heads are Black Rhinos (*Diceros bicornis*) but this specimen is of a White Rhino (*Ceratotherium simum*) a species that was only preserved on comparatively rare occasions.

£12,000-18,000

For details of our buyers premium which is added onto the hammer price together with any other applicable charges please refer to our guide for prospective buyers



440
A massive set of
American Wapiti antlers

17 points
dated 1885
124cm high by 120cm
wide

£1,000-1,500



442
A Cape Buffalo trophy

97cm wide

£500-800



441
A very large set of Red
Deer antlers on shield

26 points
20th century
107cm by 129cm

£800-1,200

Online bidding via SummersPlace Live - register through www.summersplaceauctions.com
No surcharge (*normal BP and VAT apply*)



**443
Rowland Ward: An
elephants foot humidor**

circa 1900
with partial label to
interior
21cm by 39cm by 32cm

Rowland Ward (1848-1912) the most celebrated of all taxidermists, operated from premises in Piccadilly. Here, he catered to Dukes and Duchesses, the rich and famous, and sportsmen the world over. He was so successful, and his reputation so great, that following his own death in 1912, the company he founded stayed in business

for another 60 years, despite the general decline in interest in taxidermy through the twentieth century. During this period, the firm employed hundreds of workers, and was always renowned for the high quality of the work produced and the top quality standards maintained by its employees. Ward himself made many innovations in terms of taxidermy, and always maintained that a good taxidermist was not simply a craftsman but an artist and that he or she should be regarded as nothing less.

£500-800



**444
A full mount lion**

recent
134cm high

£5,000-8,000

For details of our buyers premium which is added onto the hammer price together with any other applicable charges please refer to our guide for prospective buyers

445

A rare Japanese Giant Spider Crab

(*Macrocheira kaempheri*) subadult

mounted on stand

Origin: Trawled at 450 m.

West off Mihama Point,

Izu Peninsula, Shizuoka,

Suruga Bay, Japan, from

commercial fisheries

(2019)

50cm high by 100cm wide

by 60cm deep

C. J. Temminck described the species *Maja kaempheri* from specimens received from Philipp Franz von Siebold in 1836 which originated from Deshima island (= protruding island – jap. trans.) in the Nagasaki Bay. The specimens were one of the first that were available for European researchers and admirers. One of those specimens, now held in Naturalis presumably, was a giant male with a leg span of about 3 m (measured over the first pair of legs). The few specimens were obtained by von Siebold on one of his expeditions to the Japanese Islands and were carefully shipped back to Holland. This is the start of mankind's fascination for the largest of all crabs in the world.

Originally described in the genus *Maja* but later placed in *Macrocheira* (= largely or over-constructed (latin trans.) Very little is known about these aquatic giants and even the figures about their maximum are sometime contradicting. Some sources speak of a leg span of over 4 m, others even 6 m. In collections, a leg span of 3 m is available (measured over the first pair of legs). As the size of the first pair of legs is not in direct relation with the size of the animal but with the age, the size is in modern times indicated measured over the second pair of legs which is more accurate and desired for size/weight comparison. The live at large depths of usually about 100-300 m but occasionally they are spotted by divers in the shallow subtidal zone. Reports of catches deeper than 350 m are probably because in their range deep sea fishing is rarely endeavored. Historically their range was believed to be the waters all along SE Japan, which is currently their main habitat. Today, almost all fishery of the crab is concentrated in or near Suruga Bay where it is locally consumed or kept for aquariums worldwide. For Both these markets

they are in high demand. The meat is considered a true delicacy. Reports document the species occurrence also in the southern Kuril Islands and even around Taiwan. Due to the intensive fishing around their habitat, their numbers have gone down over the decades. Reports of fishermen having to go fish in more deeper areas every year are abundant. The monsters of a century ago have become rare. The average large size nowadays is about 1.0-1.2 m leg span. Reports of giants (3 m) being caught are only a handful a year.

The legend surrounding these majestic creatures is well known in Japanese folklore. The story goes that the large-legged giants were seen devouring the corpse of a drowned sailor. Other reports tell the story of the crabs hiding in the kelp forest waiting to strike. It is told that they could grasp a diving ama and drowning their victim by keeping them submerged until they would stop breathing only to feast on the decaying body, hence their folkloristic name "shinin-gani" or "dead man's crab". The first story could well have a true basis as these animals are scavengers. On the other

hand, the second story is highly unlikely. The tale probably survived time because an underwater encounter with a male giant amongst the kelp is truly memorable, startling and perhaps even frightening. In their natural life, they rarely encounter humans as they normally live at great depths. Moreover, and in spite of their sheer size, these animals are very brittle. Legs are easily snapped of and hence complete specimens are rare. 99% of the caught specimens have 1 to 3 broken or missing legs. 4 is rarely observed. Any more loss leaves the animal incapable of survival.

In 1938, Orson Wells told the story of "War of the Worlds" by H. G. Wells on a popular US radio show which created that same night and following days chaos in the country. The story was adapted later for film in 1953. The robotic stalk-legged machines that invaded the earth were memorable by design. The design is said to have been copied from the natural design of a Japanese Giant Spider Crab. The resemblance is indeed truly striking.

£4,000-6,000

Online bidding via SummersPlace Live - register through www.summersplaceauctions.com
No surcharge (normal BP and VAT apply)



446
A set of six sea fans

on metal bases
the largest 55cm by 35cm

£400-600



For details of our buyers premium which is added onto the hammer price together with any other applicable charges please refer to our guide for prospective buyers



447
A very rare King cheetah skin

mid 20th century

The King Cheetah is the most enigmatic, and the rarest, of all the big cats. Experts don't know quite what to make of it. Is it a species allied in some way to the ordinary cheetah, is it a particularly remarkable and dramatic colour morph, or is it something different entirely? Very different in temperament, size and colouring to the familiar cheetah, it is so excessively rare and infrequently

found or seen that proper study has proved virtually impossible.

The King Cheetah first came to attention in the 1920s when a then unique specimen was found. So remarkable was it that zoologists were unable to decide exactly what it was, and for decades the specimen was virtually forgotten. Over the years a very few additional skins turned up but these too proved difficult to classify.

The very beautiful markings have a number of truly remarkable features. Instead of being

spotted all over (as is the case with the ordinary cheetah) these enigmatic animals have exquisite stripes that run along the centre of their backs. But most extraordinary of all is the tail. Unlike any other cat species it shows stripes that run half way down its length, while the rest of the tail is banded! It's intricate markings, standard across all King Cheetahs recorded, may well be a throwback to the cheetah's original coat patterning before retreat of the heavily forested, wooded habitats that long prevailed.

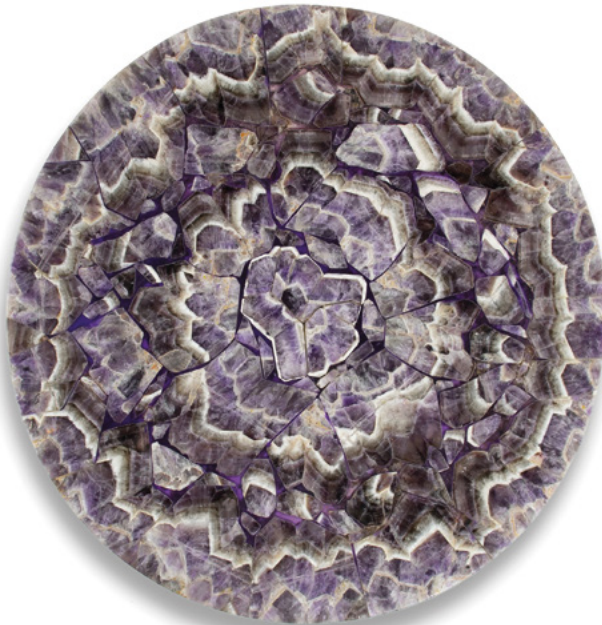
This particular skin has a remarkable provenance. It is the property of Lena Godsall Bottriell, a lady who has devoted much of her life to chasing down every scrap of information concerning the King Cheetah culminating in 1987 in her celebrated book *The King Cheetah*. Beguiled by the knowledge that no-one knew exactly what the animal was, and the fact that for decades its very existence had remained in oblivion, she determined to put on record everything that was known. At some point in her research she acquired this skin which comes with complete documentation. Although somewhat distressed, it remains a piece of great beauty and represents a truly unique opportunity for a collector to acquire a specimen of the most mysterious of all the big cats.

£6,000-10,000

Online bidding via SummersPlace Live - register through www.summersplaceauctions.com
No surcharge (*normal BP and VAT apply*)



Sp
SUMMERS PLACE
AUCTIONS



THE WALLED GARDEN
SUMMERS PLACE
BILLINGSHURST
WEST SUSSEX
RH14 9AB
+44(0)1403 331 331

www.summersplaceauctions.com